



PRICE REDUCED: \$2,700,000

FOR SALE
±24,068 SF

Beautiful 1930's Building Perfect For Manufacturing and Warehouse Use
Excellent Investment: Live, Work, Flex Space

Features

- ±24,068 SF Building on a ±26,256 SF Lot Includes Nicely configured and clean, two Single Family Residence Which Together Generates Approximately \$2,100 Per Month
- ±1,500 SF Office Space– Finished Mezzanine
- Fenced And Paved Parking
- 2,000 Pound Elevator
- 3 Ground Level Doors
- 12' Minimum Clearance Height
- Sprinklered
- Fenced Yard
- 15 Parking Spaces
- Beautiful, Very Clean, Cared for Building
- Building Layout Allows for Multiple Users

For more information, contact:
HYTHUM KISWANI | P: 213.270.2241
hythum.kiswani@daumcommercial.com
MATT VESSELL | P: 213.270.2274
matt.vessell@daumcommercial.com

2700 Maple Street | Los Angeles, CA 90011
Close to the 10, 110, 5, 60 and 101 Freeways



DAUM
COMMERCIAL REAL ESTATE SERVICES

D/AQ Corp. # 01129558
KISWANI CA License # 01313520
VESSELL CA License # 01469853



±24,068 SF BUILDING FOR SALE

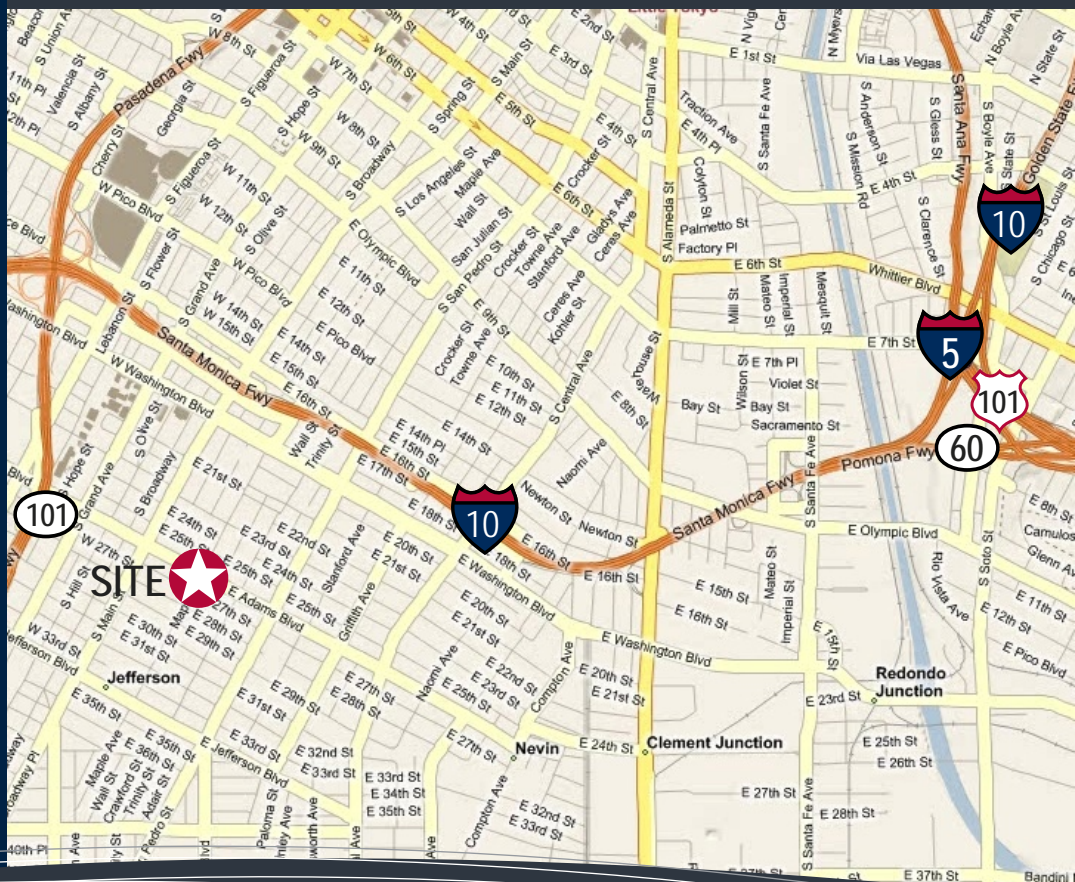
2700 Maple Street | Los Angeles, CA 90011

Flex Use Building Perfect For Manufacturing & Warehouse Needs
Excellent Investment Opportunity | Beautiful 1930's Building



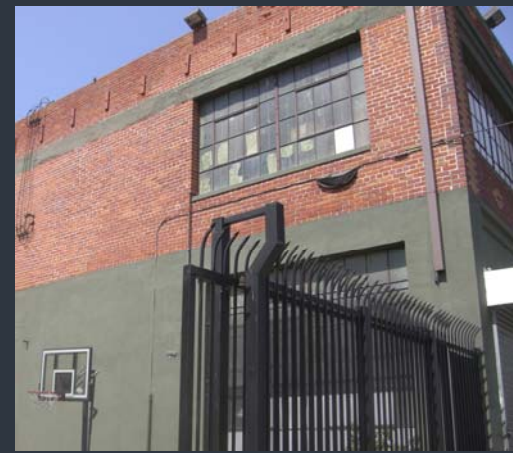
For more information, contact:
HYTHUM KISWANI | P: 213.270.2241
hythum.kiswani@daumcommercial.com
MATT VESSELL | P: 213.270.2274
matt.vessell@daumcommercial.com

Although all information is furnished regarding for sale, rental or financing is from sources deemed reliable, such information has not been verified and no express representation is made nor is any to be implied as to the accuracy thereof, and it is submitted subject to errors, omissions, changes of price, rental or other conditions, prior sale, lease or financing, or withdrawal





2700 Maple Street | Los Angeles, CA 90011



For more information, contact:

HYTHUM KISWANI | P: 213.270.2241 | hythum.kiswani@daumcommercial.com

MATT VESSELL | P: 213.270.2274 | matt.vessell@daumcommercial.com