



ADVANCED NOTICE | FOR MORE INFORMATION CALL: 310-538-6722

1211

E ARTESIA BLVD.
CARSON | CA



FOR SUBLEASE

INDUSTRIAL PROPERTY



26,000 SF
SQUARE FEET



14,000 SF
2 STORY OFFICE



21-24 ft
CLEAR HEIGHT



2
DOCK HIGH DOORS

PROPERTY HIGHLIGHTS

- 26,000 SF Industrial Building
- Built in 1978
- 14,000 SF beautiful 2 story offices
- Heavy Power (600 & 400 Amp panels)
- 2 Street Access
- \$1.65/SF/mo. Industrial Gross plus CAM
- 21' – 24' Clearance
- Ability to add 2 additional dock high positions
- Divisible to 12,000 sf warehouse and as much offices as you need - rate for that is \$2/sf IG plus 9 CAM - could have 4 dock high positions

FOR MORE INFORMATION PLEASE CONTACT:

CHUCK BRILL
EXECUTIVE VICE PRESIDENT | PRINCIPAL
P: 310.538.6710 | M: 310.710.3127
chuck.brill@daumcommercial.com
CADRE #00974881

NOAH TSAI
ASSOCIATE
P: 310.538.6715 | M: 626.616.0330
ntsai@daumcommercial.com
CADRE #02193361

JACK STONE
ASSOCIATE
P: 310.538.6722 | M: 747.217.1832
jack.stone@daumcommercial.com
CADRE #02070402

Although all information is furnished regarding for sale, rental or financing is from sources deemed reliable, such information has not been verified and no express representation is made nor is any to be implied as to the accuracy thereof, and it is submitted subject to errors, omissions, changes of price, rental or other conditions, prior sale, lease or financing, or withdrawal without notice.

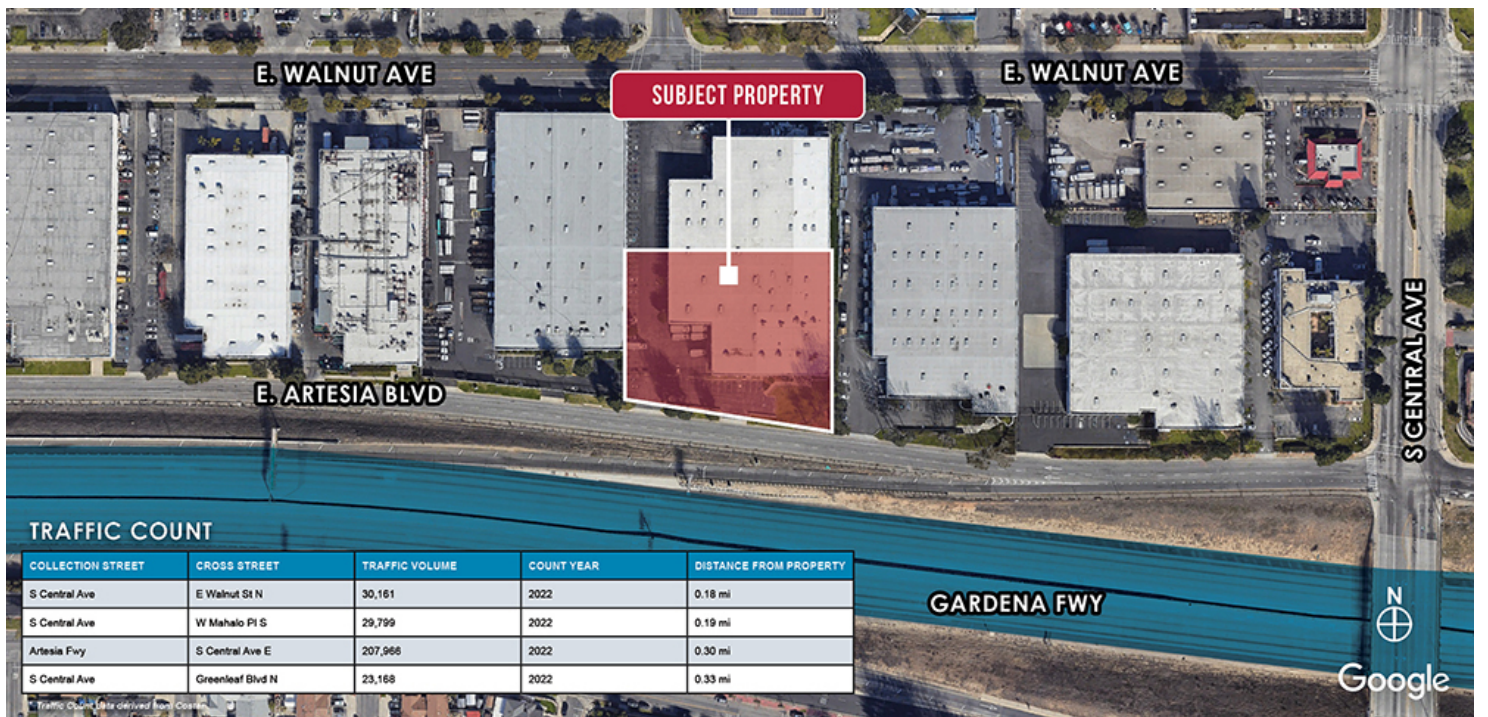
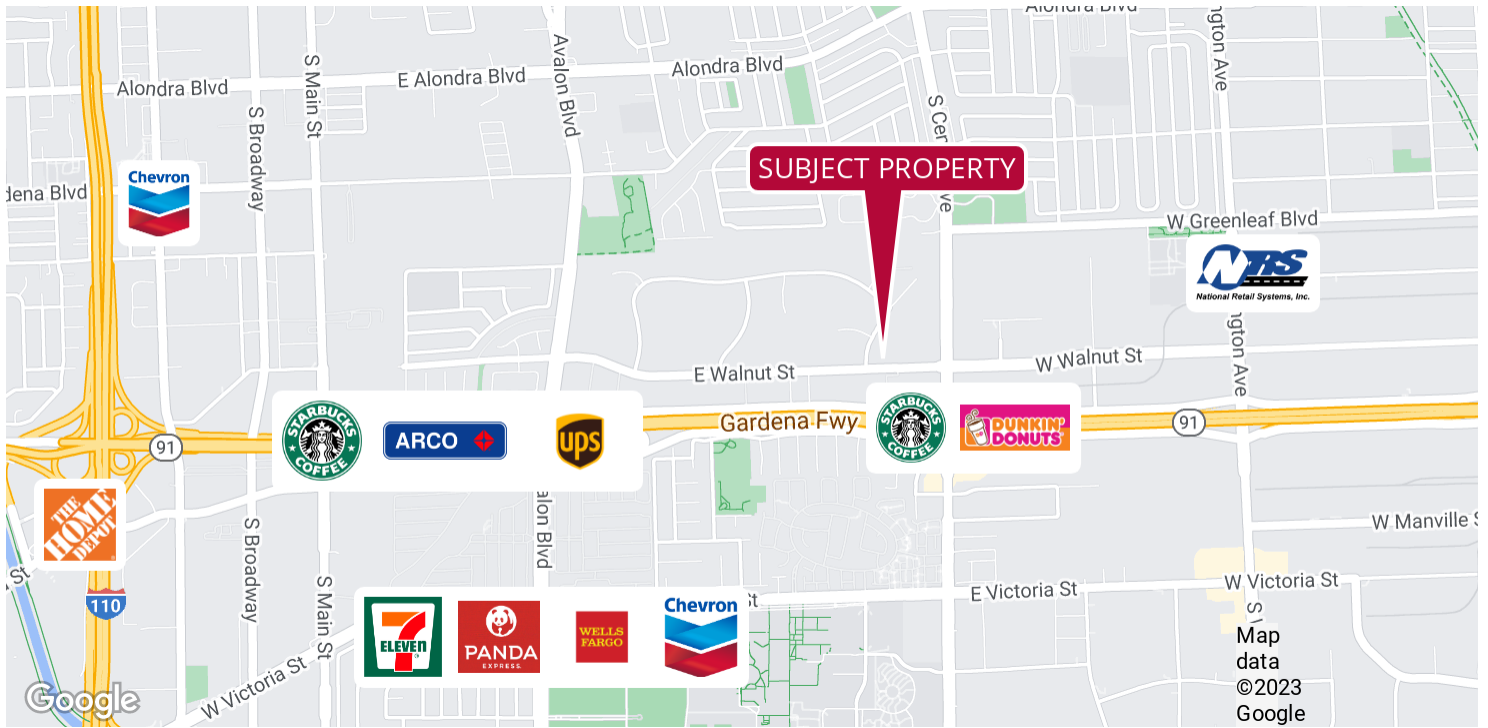


1211

E. ARTESIA BLVD.
CARSON | CA

FOR SUBLEASE

INDUSTRIAL PROPERTY



Although all information is furnished regarding for sale, rental or financing is from sources deemed reliable, such information has not been verified and no express representation is made nor is any to be implied as to the accuracy thereof, and it is submitted subject to errors, omissions, changes of price, rental or other conditions, prior sale, lease or financing, or withdrawal without notice.



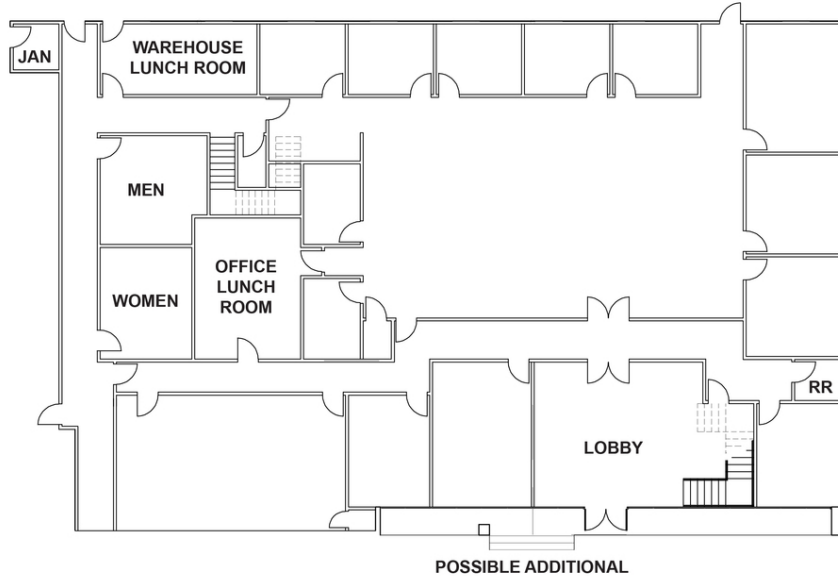
1211

E. ARTESIA BLVD.
CARSON | CA

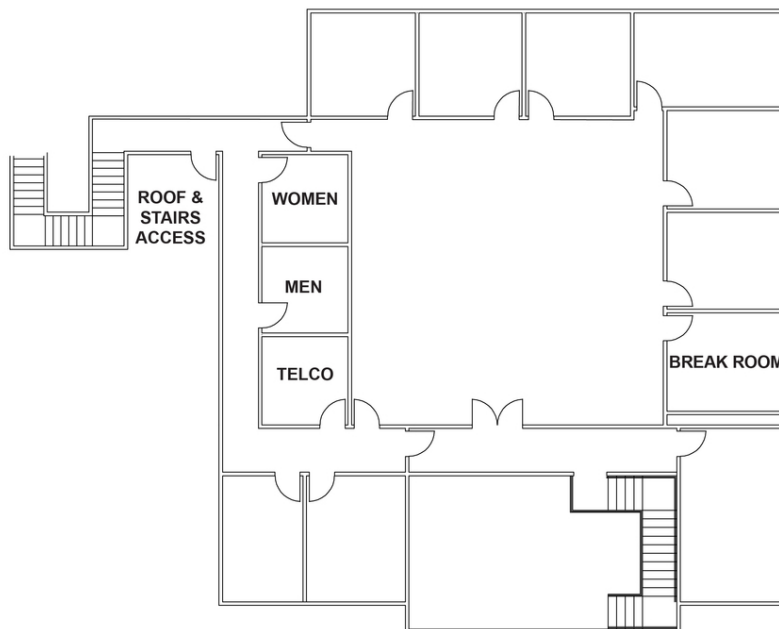
FOR SUBLEASE

INDUSTRIAL PROPERTY

FIRST FLOOR



SECOND FLOOR



Although all information is furnished regarding for sale, rental or financing is from sources deemed reliable, such information has not been verified and no express representation is made nor is any to be implied as to the accuracy thereof, and it is submitted subject to errors, omissions, changes of price, rental or other conditions, prior sale, lease or financing, or withdrawal without notice.

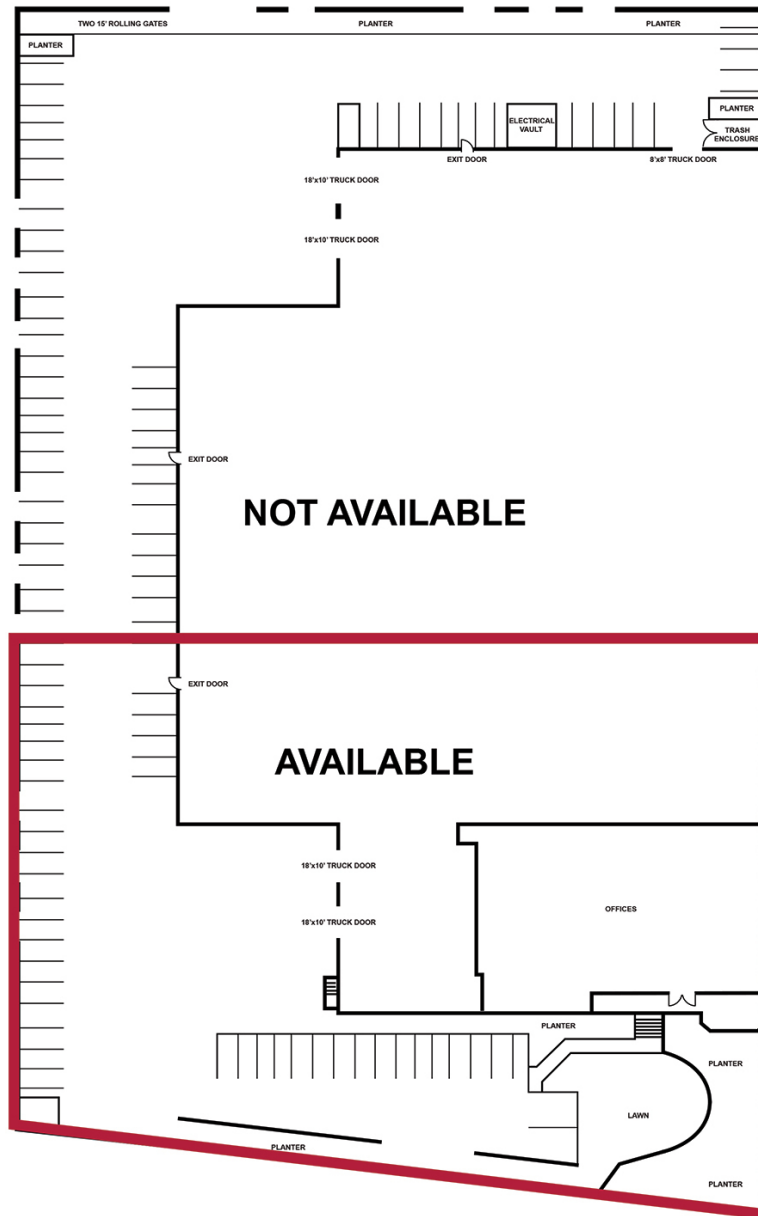
1211

E ARTESIA BLVD.
CARSON | CA

FOR SUBLEASE
INDUSTRIAL PROPERTY

SITE PLAN

WALNUT ST



ARTESIA BLVD

Although all information is furnished regarding for sale, rental or financing is from sources deemed reliable, such information has not been verified and no express representation is made nor is any to be implied as to the accuracy thereof, and it is submitted subject to errors, omissions, changes of price, rental or other conditions, prior sale, lease or financing, or withdrawal without notice.