

# FOR LEASE

## ±11,766 SF INDUSTRIAL BUILDING

13211 SPRING STREET

BALDWIN PARK CA 91706



Industrial | ± 11,766 SF



GL Doors | 1



Dock High Position | 1



Ceiling Height | 20'-22"

### PROPERTY DETAILS:

- Freeway Signage
- Fenced & Secure Yard
- Office Size: 3,530 SF or To Suit
- Lot Size: 30,492 SF  
(Approximate 0.70 Acres)
- Zoning: Industrial
- Immediate Access to 605, 210 and 10 Freeways
- Power: 400 amps

For More Information Contact:

**Nathan Lara**

Vice President

[nathan.lara@daumcommercial.com](mailto:nathan.lara@daumcommercial.com)

714.723.1212

CA License#: 01923385

**Eric Burney**

Executive Vice President

[eric.burney@daumcommercial.com](mailto:eric.burney@daumcommercial.com)

909.652.9051x2051

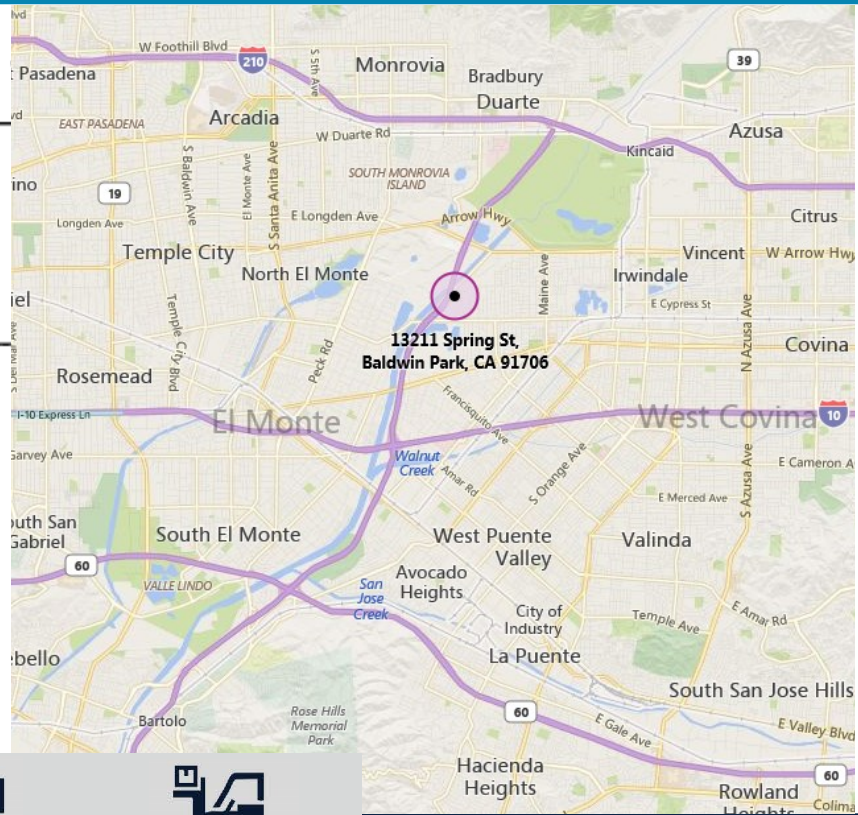
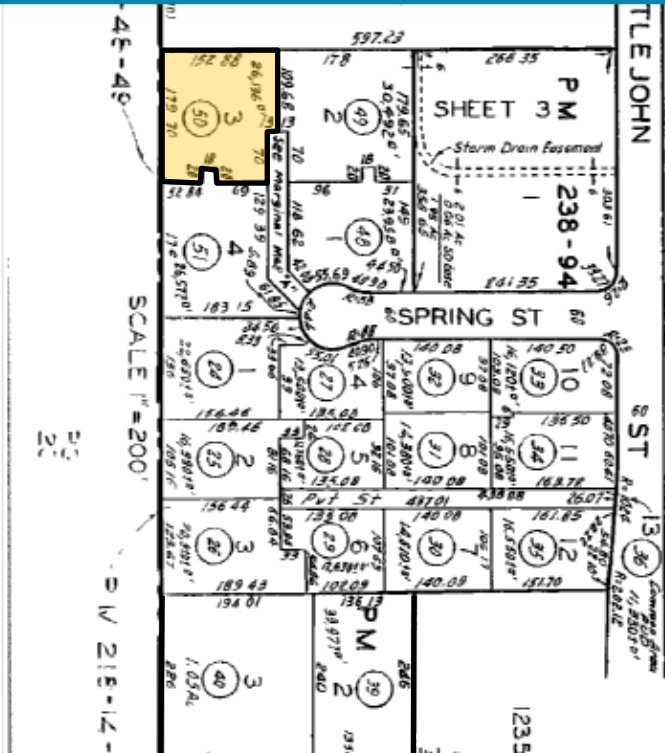
CA License#: 0697556

**DAUM**  
COMMERCIAL REAL ESTATE SERVICES

# FOR LEASE

# ±11,766 SF INDUSTRIAL BUILDING

13211 SPRING STREET  
BALDWIN PARK CA 91706



Industrial | ±11,766 SF



GL Doors | 1



Dock High Position | 1



Ceiling Height | 20'-22''

## PROPERTY DETAILS:

- Freeway Signage
- Fenced & Secure Yard
- Office Size: 3,530 SF or To Suit
- Lot Size: 30,492 SF  
(Approximate 0.70 Acres)
- Zoning: Industrial
- Immediate Access to 605, 210 and 10 Freeways
- Power: 400 amps

For More Information Contact:

**Nathan Lara**

Vice President

[nathan.lara@daumcommercial.com](mailto:nathan.lara@daumcommercial.com)

714.723.1212

CA License#: 01923385

**Eric Burney**

Executive Vice President

[eric.burney@daumcommercial.com](mailto:eric.burney@daumcommercial.com)

909.652.9051x2051

CA License#: 0697556

