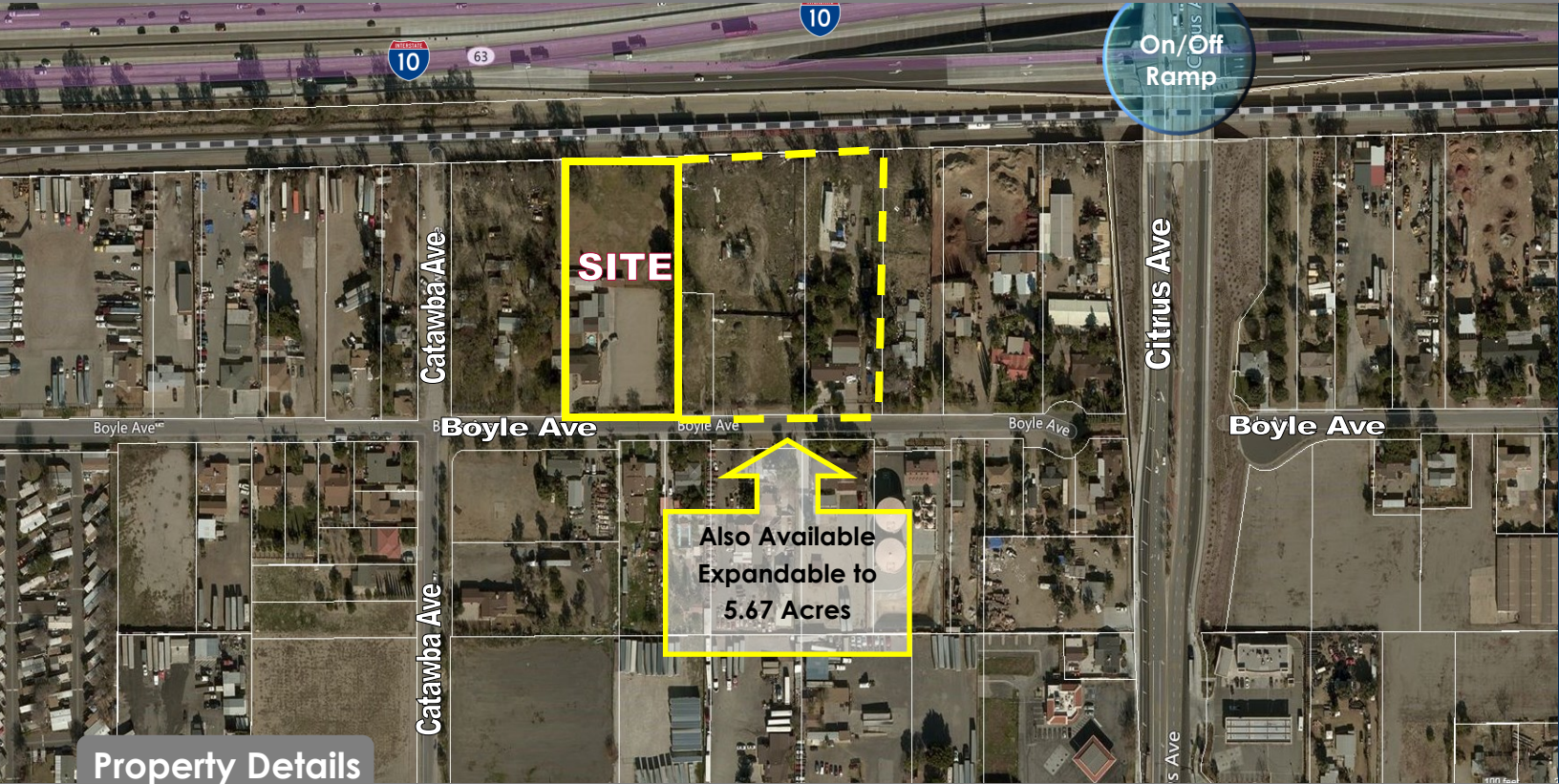


FOR SALE

±1,456 SF House/Office on ±2.12 Acres

LOCATED IN THE SOUTHWEST INDUSTRIAL PARK (SWIP)
IMMEDIATE FREEWAY ACCESS

15950 BOYLE AVENUE
Fontana, CA 92337



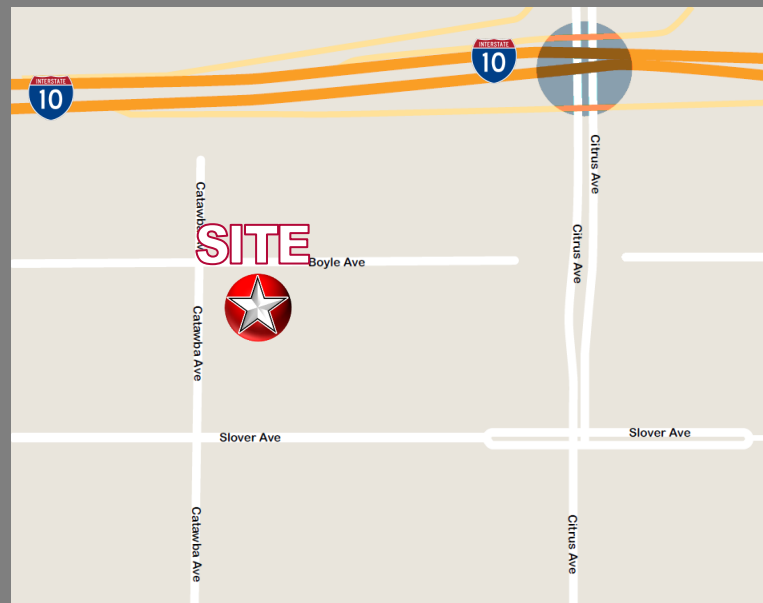
Property Details

- ±1,456 SF House/Office on ±2.12 Acres
- Expandable to 5.67 Acres
- Immediate I-10 Freeway Access Via The Newly Completed Citrus Ave on/off Ramp
- All Utilities to Site
- Freeway Industrial/Commercial District (City of Fontana)
- APN: 0237-053-02

Allowed Uses

- Warehouse Facilities
- Vehicle Auctions
- Truck Sales
- Industrial Repair

*Verify all uses with City of Fontana



For more information, contact:

Gus Andros

P: 909.912.0003 | F: 909.912.0013
gandros@daumcommercial.com
CA License #01010235

Juan Covarrubias

P: 909.652.9055 | F: 909.652.9057
jcovarrubias@daumcre.com
CA License #01945028

DAUM
COMMERCIAL REAL ESTATE SERVICES
ONCOR INTERNATIONAL

FOR SALE

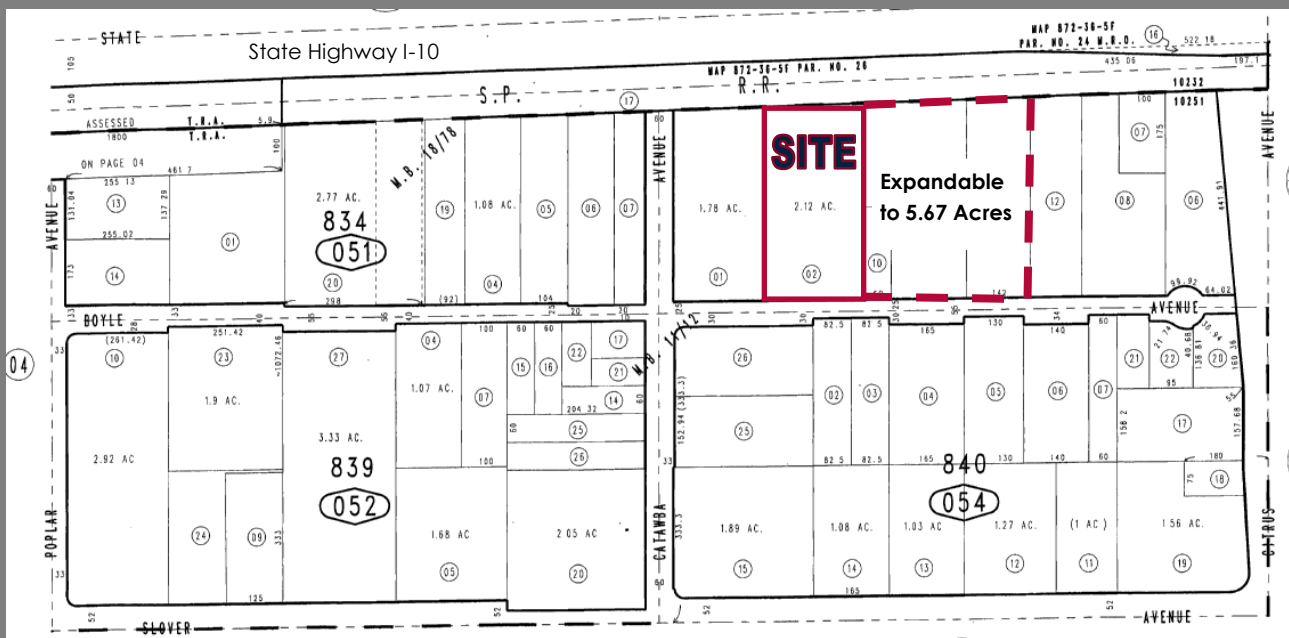
±1,456 SF House/Office on ±2.12 Acres

LOCATED IN THE SOUTHWEST INDUSTRIAL PARK (SWIP)
IMMEDIATE FREEWAY ACCESS

15950 BOYLE AVENUE
Fontana, CA 92337



Assessors Parcel Number: 0237-053-02



For more information, contact:

Gus Andros

P: 909.912.0003 | F: 909.912.0013
gandros@daumcommercial.com
CA License #01010235

Juan Covarrubias

P: 909.652.9055 | F: 909.652.9057
jcovarrubias@daumcre.com
CA License #01945028

DAUM
COMMERCIAL REAL ESTATE SERVICES
ONCOR INTERNATIONAL