

EAST LOS ANGELES AVE.

1900

SIMI VALLEY | CA



FOR
LEASE

- Rarely Available Office/Medical Office
- Small Floor Plates (Divisible)
- Extensive Window Line
- Vacant – Available for Occupancy
- Beautiful Valley Views
- High Identity Building Signage
- 28,890 Daily Traffic Count (Averaged)
- High Traffic/Signalized Corner Location
- Elevator Served
- Secured Covered Parking (Limited)
- Central Simi Valley Location
- 5/1,000 USF Parking Ratio
- Walking Distance to Amenities
- Great Access to 118 Freeway

For More Information, Contact:

SHAUN BIENIEK | Vice President
O: 805.384.8885 | C: 805.304.9533
sbieniek@daumcommercial.com
CA BRE License # 01374562

DAUM
COMMERCIAL REAL ESTATE SERVICES

D/AQ Corp. #01129558. Maps Courtesy @Google & @Microsoft. Although all information is furnished regarding for sale, rental or financing is from sources deemed reliable, such information has not been verified and no express representation is made nor is any to be implied as to the accuracy thereof, and it is submitted subject to errors, omissions, changes of price, rental or other conditions, prior sale, lease or financing, or withdrawal without notice.

FOR LEASE

1900

E. LOS ANGELES AVE.
SIMI VALLEY | CA

“ATTRACTIVE OFFICE / MEDICAL BUILDING”



SUBJECT PROPERTY

For More Information, Contact:

SHAUN BIENIEK | Vice President
O: 805.384.8885 | C: 805.304.9533
sbieniek@daumcommercial.com
CA BRE License # 01374562

DAUM
COMMERCIAL REAL ESTATE SERVICES

D/AQ Corp. #01129558. Maps Courtesy @Google & @Microsoft. Although all information is furnished regarding for sale, rental or financing is from sources deemed reliable, such information has not been verified and no express representation is made nor is any to be implied as to the accuracy thereof, and it is submitted subject to errors, omissions, changes of price, rental or other conditions, prior sale, lease or financing, or withdrawal without notice.

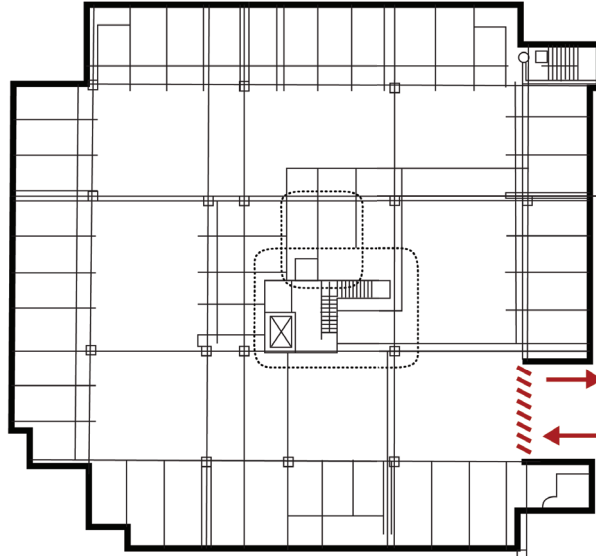
FOR LEASE

1900

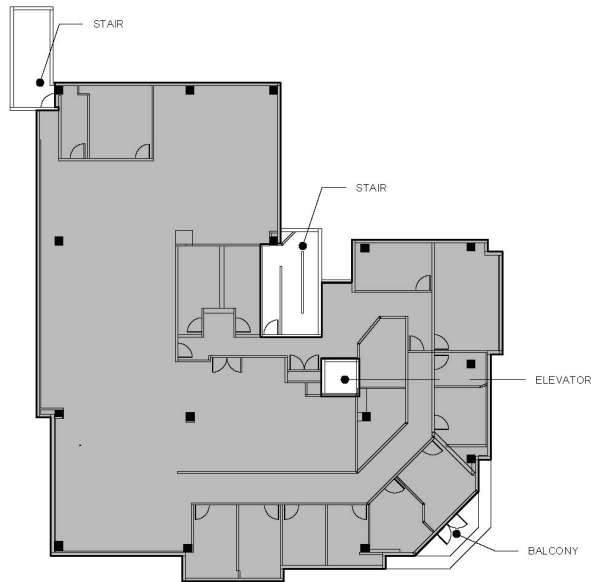
E. LOS ANGELES AVE.
SIMI VALLEY | CA

“ATTRACTIVE OFFICE / MEDICAL BUILDING”

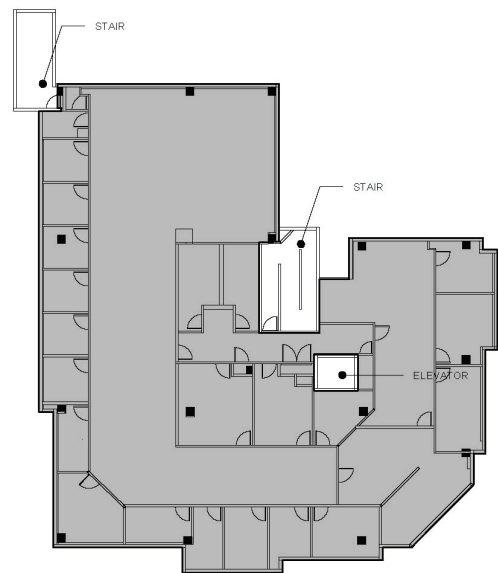
PARKING PLAN



SECOND FLOOR



THIRD FLOOR



For More Information, Contact:

SHAUN BIENIEK | Vice President
O: 805.384.8885 | C: 805.304.9533
sbieniek@daumcommercial.com
CA BRE License # 01374562

DAUM
COMMERCIAL REAL ESTATE SERVICES

D/AQ Corp. #01129558. Maps Courtesy @Google & @Microsoft. Although all information is furnished regarding for sale, rental or financing is from sources deemed reliable, such information has not been verified and no express representation is made nor is any to be implied as to the accuracy thereof, and it is submitted subject to errors, omissions, changes of price, rental or other conditions, prior sale, lease or financing, or withdrawal without notice.