



ELEVENTH STREET BUSINESS PARK

1933

ELEVENTH STREET, UNIT I
UPLAND | CA



FOR LEASE | HIGH IMAGE INDUSTRIAL PARK



2,200 SF
SQUARE FEET



One (1)
OFFICES



16 ft
CLEAR HEIGHT



1 (10'x10')
GROUND LEVEL DOOR

PROPERTY HIGHLIGHTS

- One (1) Offices and Reception Area
- 100% Climate Controlled, Fire Sprinklers
- One (1) Restroom
- One (1) GL Door (10'x10')
- 100 Amps, 110/220 V, 3 Phase Power
- 16' Warehouse Clearance
- Skylights
- Easy 10 or 210 Freeway Access

FOR MORE INFORMATION PLEASE CONTACT:

CRAIG MCKENZIE

ASSOCIATE VICE PRESIDENT

P: 909.652.9046 | M: 626.664.1567

craig.mckenzie@daumcommercial.com

CABRE #01371536

Although all information is furnished regarding for sale, rental or financing is from sources deemed reliable, such information has not been verified and no express representation is made nor is any to be implied as to the accuracy thereof, and it is submitted subject to errors, omissions, changes of price, rental or other conditions, prior sale, lease or financing, or withdrawal without notice.

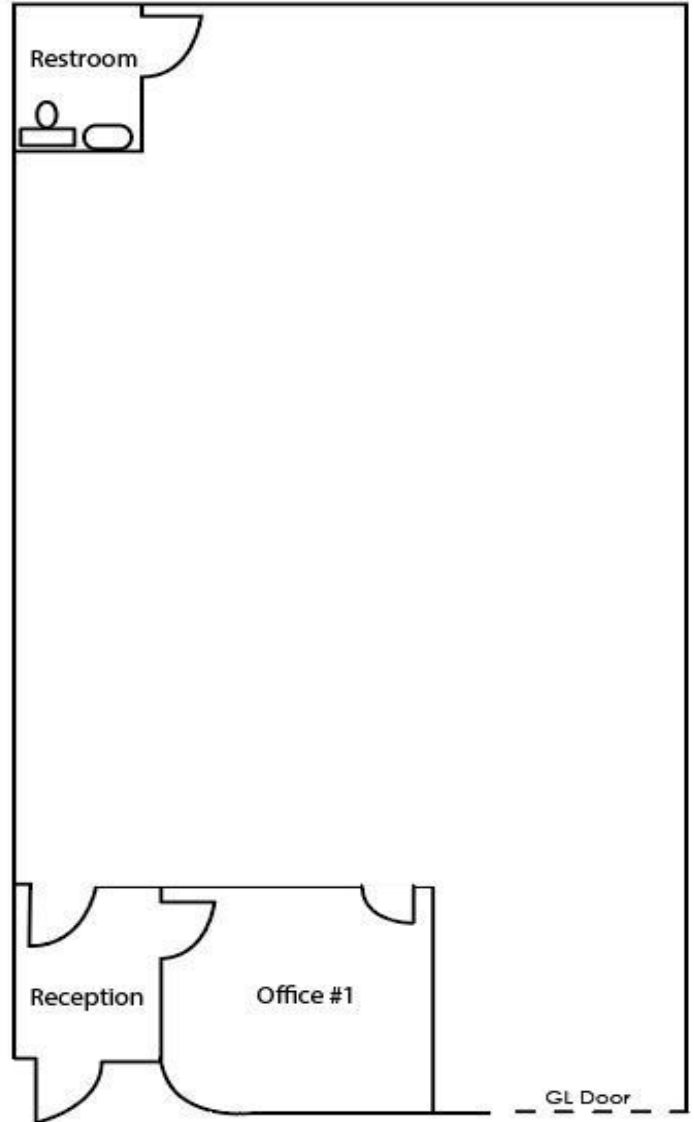
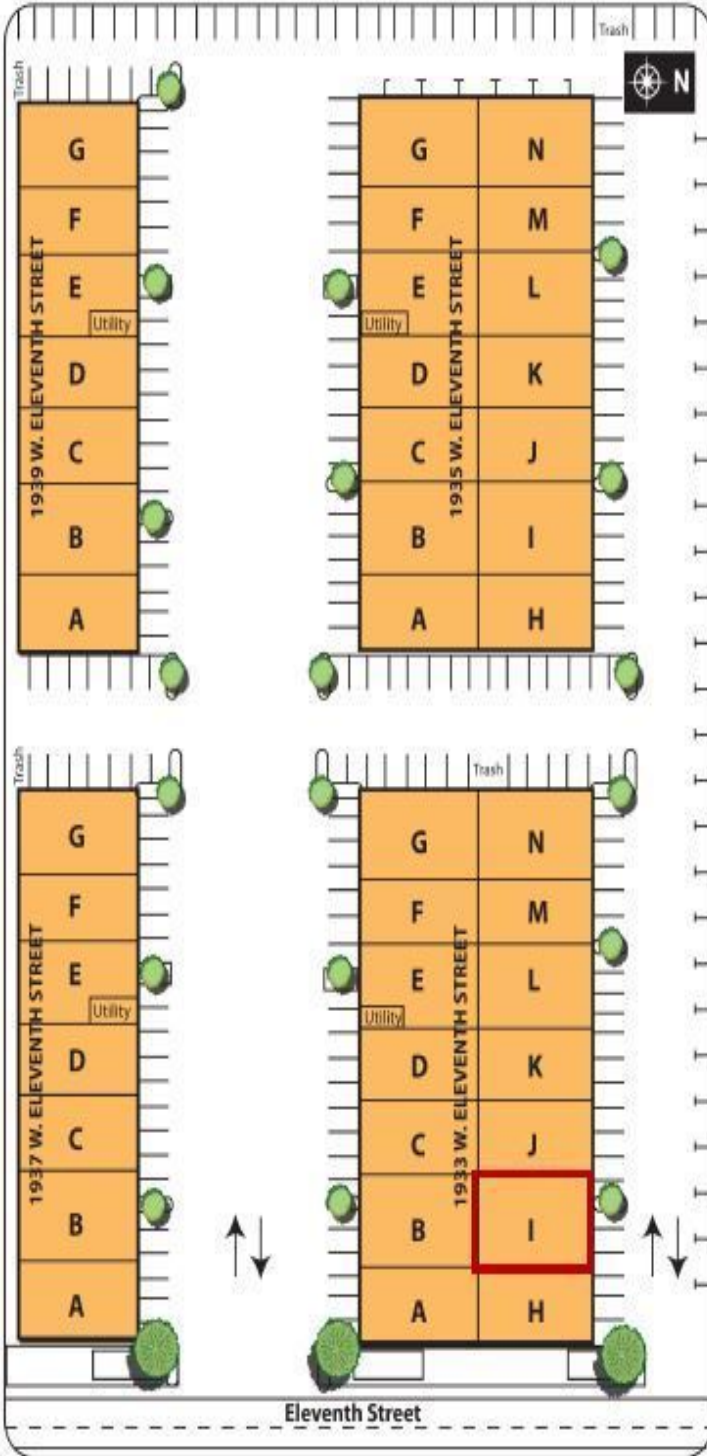
DAUM
COMMERCIAL REAL ESTATE SERVICES

1933

ELEVENTH STREET | UNIT I
UPLAND | CA 91786

FOR LEASE

2,200 SF INDUSTRIAL UNIT



Although all information is furnished regarding for sale, rental or financing is from sources deemed reliable, such information has not been verified and no express representation is made nor is any to be implied as to the accuracy thereof, and it is submitted subject to errors, omissions, changes of price, rental or other conditions, prior sale, lease or financing, or withdrawal without notice.