



**21305**  
ITASCA STREET  
CHATSWORTH | CALIFORNIA

**±16,657 TOTAL SF FOR LEASE**  
WAREHOUSE / DISTRIBUTION CENTER

CONTACT EXCLUSIVE LISTING AGENTS FOR MORE INFORMATION:

**KEVIN TAMURA**

EXECUTIVE VICE PRESIDENT

E: [ktamura@daumcre.com](mailto:ktamura@daumcre.com) | P: 818.449.1631

CA License #00912212

CHATSWORTH INDUSTRIAL CENTER | REFURNISHING IN PROGRESS

Although all information is furnished regarding for sale, rental or financing is from sources deemed reliable, such information has not been verified and no express representation is made nor is any to be implied as to the accuracy thereof, and it is submitted subject to errors, omissions, changes of price, rental or other conditions, prior sale, lease or financing, or withdrawal without notice. All maps courtesy of Google Maps, Bing, and Google Earth. D/AQ Corp. # 01129558

ONCOR INTERNATIONAL | [www.daumcommercial.com](http://www.daumcommercial.com)

 **DAUM**  
COMMERCIAL REAL ESTATE SERVICES

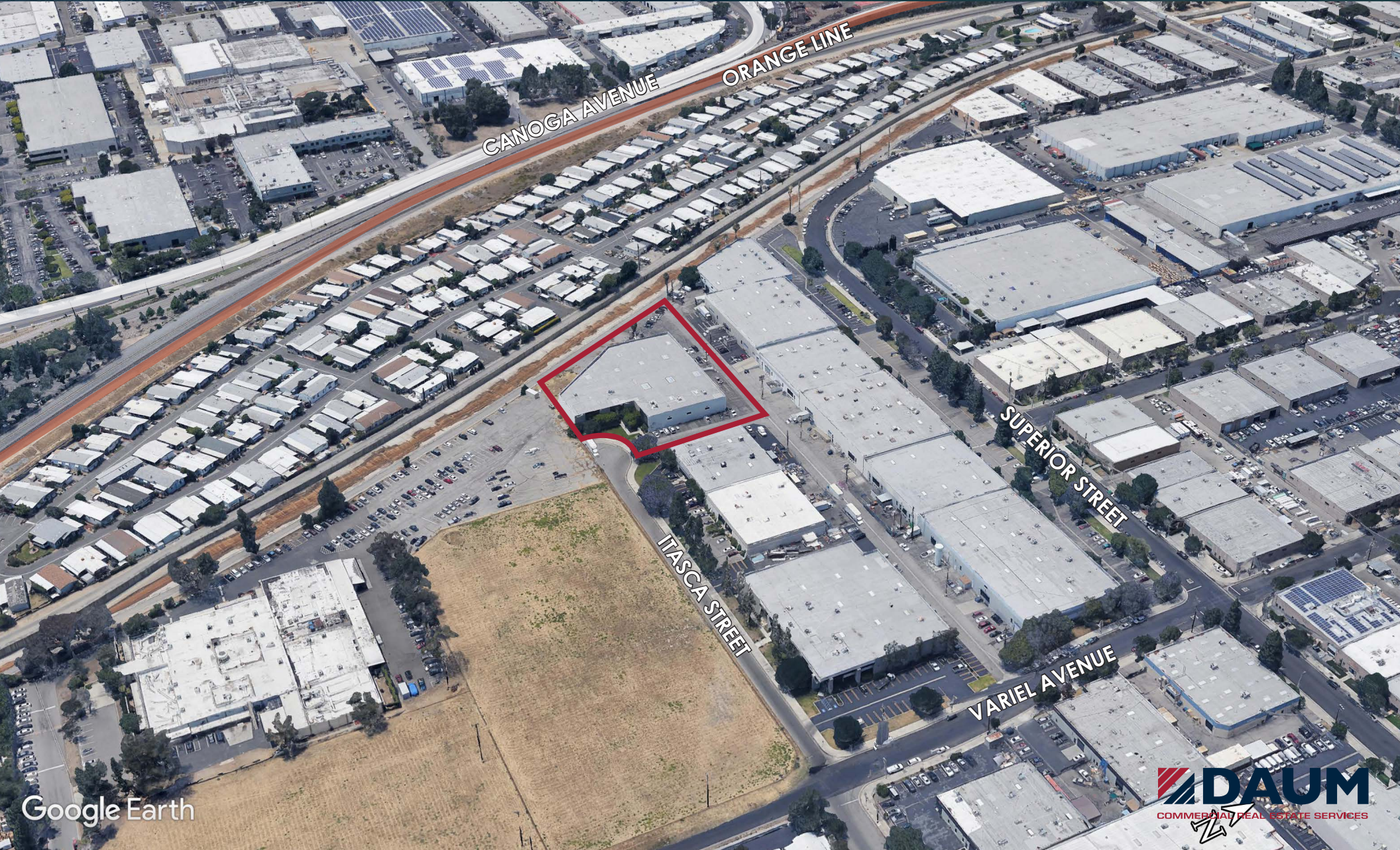
**FOR LEASE**

±16,657 SF INDUSTRIAL / WAREHOUSE

AVAILABLE  
**DAUM**  
661.705.2299  
KEVIN TAMURA

**21305**

ITASCA STREET  
CHATSWORTH | CALIFORNIA



Google Earth

**DAUM**  
COMMERCIAL REAL ESTATE SERVICES

# FOR LEASE

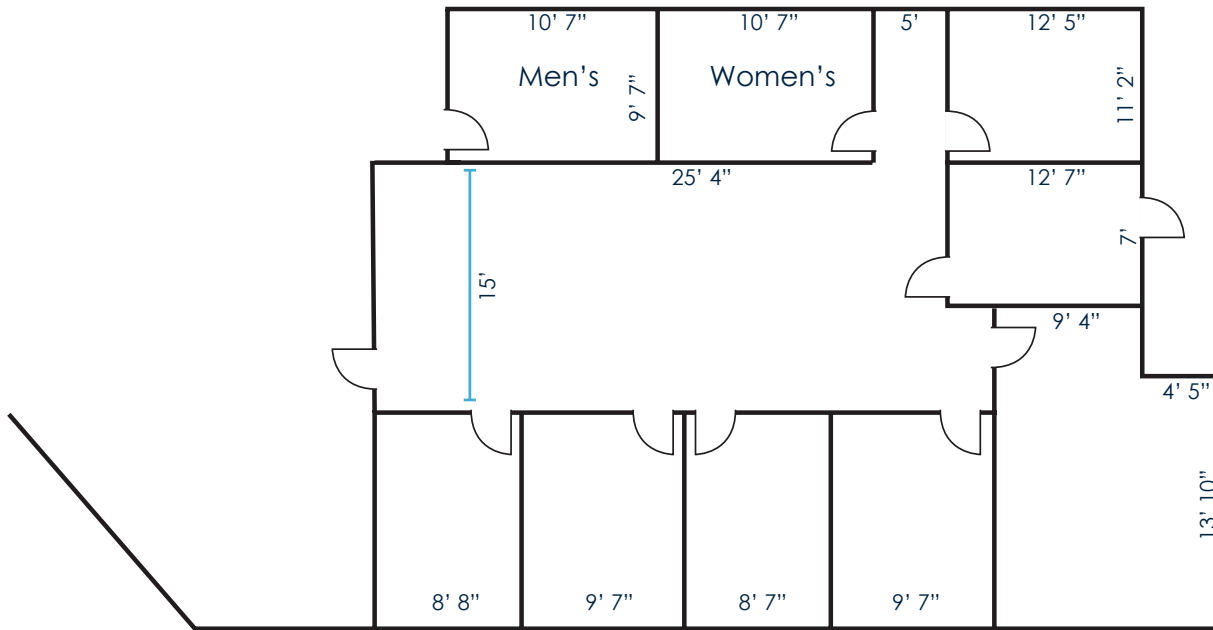
±16,657 SF INDUSTRIAL / WAREHOUSE



# 21305

ITASCA STREET  
CHATSWORTH | CALIFORNIA

## OFFICE LAYOUT



Site Plan not to Scale

## BUILDING FEATURES

- Chatsworth Industrial Center
- 16,657 Square Feet
- 22' Clearance
- Outstanding Distribution/Warehouse Facility
- 1,600 Square Feet Office
- 400 Amp Power
- Owner to Refurbish Offices

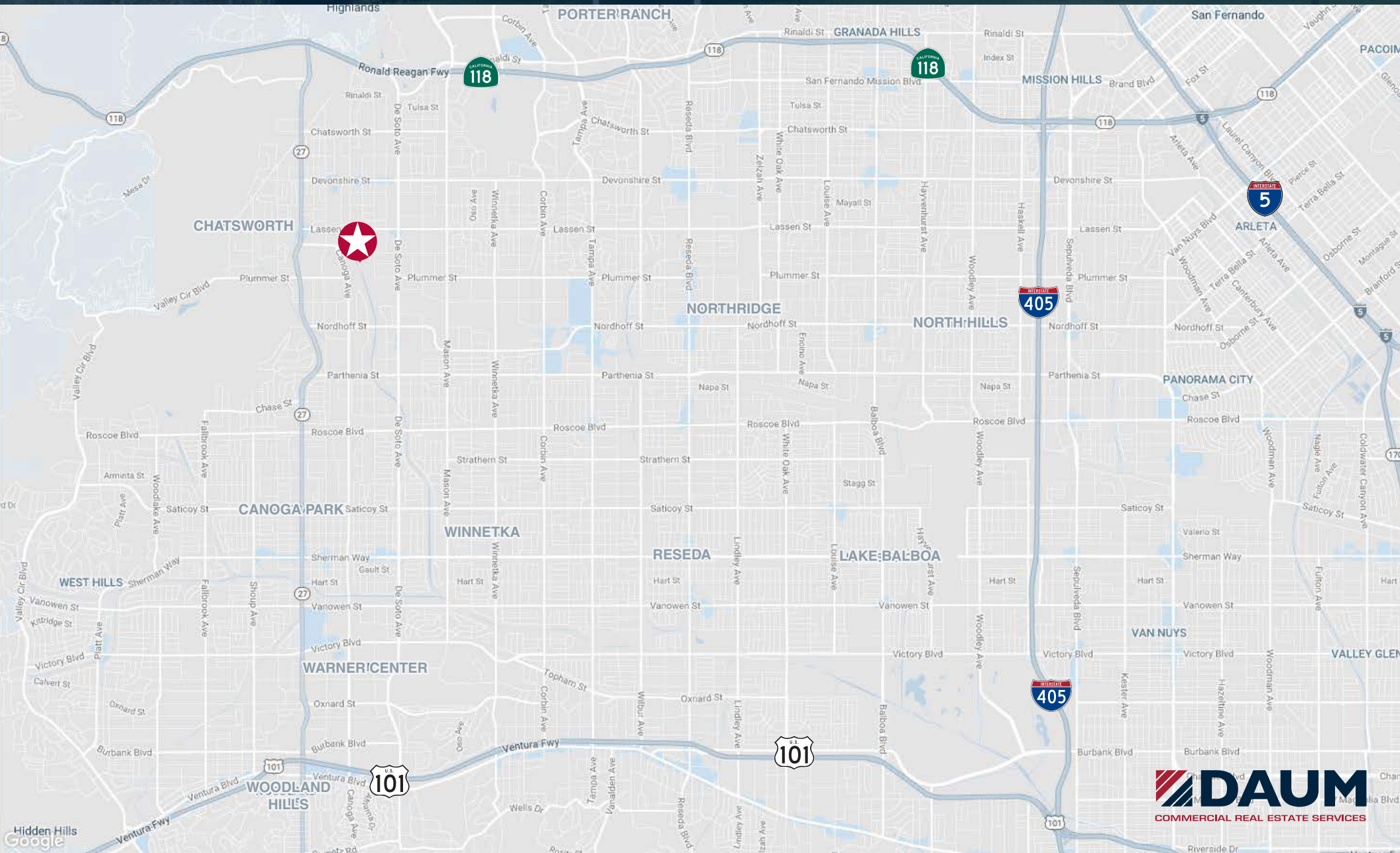
# FOR LEASE

## ±16,657 SF INDUSTRIAL / WAREHOUSE

AVAILABLE  
**DAUM**  
COMMERCIAL REAL ESTATE SERVICES  
661.705.2299  
KEVIN TAMURA

# 21305

ITASCA STREET  
CHATSWORTH | CALIFORNIA



**DAUM**  
COMMERCIAL REAL ESTATE SERVICES