

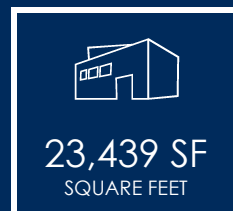


23,439 SF CLEAR SPAN BUILDING | NEAR I-10 FREEWAY

2707

**N. GAREY AVENUE
POMONA | CA**

FOR LEASE



FOR MORE INFORMATION PLEASE CONTACT:

NOAH SAMARIN | EXECUTIVE VICE PRESIDENT

P: 909.912.0007

noah.samarin@daumcommercial.com

CABRE #01755814

Although all information is furnished regarding for sale, rental or financing is from sources deemed reliable, such information has not been verified and no express representation is made nor is any to be implied as to the accuracy thereof, and it is submitted subject to errors, omissions, changes of price, rental or other conditions, prior sale, lease or financing, or withdrawal without notice.

DAUM
COMMERCIAL REAL ESTATE SERVICES

FOR LEASE

23,439 SF CLEAR SPAN BUILDING

2707

N. GAREY AVENUE
POMONA | CA



PROPERTY HIGHLIGHTS

- 23,438 SF Available
- 140 SF Office Space
- 160'x140' Clear Span Area
- 12 Parking Spaces
- One (1) Dock High Door
- Two (2) Ground Level Doors
- 18'-20' Clear Height
- Near I-10 and Garey Ave On/Off Ramps
- Gated Entry/Exit



NOAH SAMARIN
EXECUTIVE VICE PRESIDENT

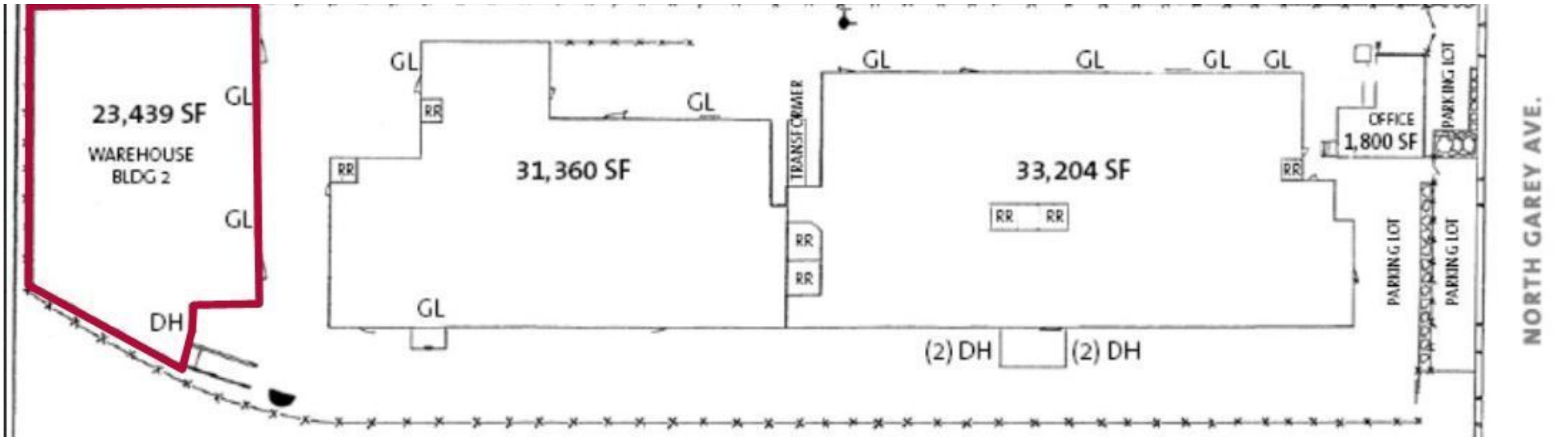
P: 909.912.0007
noah.samarin@daumcommercial.com
CABRE #01755814

FOR LEASE

23,439 SF CLEAR SPAN BUILDING

2707

N. GAREY AVENUE
POMONA | CA



NOAH SAMARIN
EXECUTIVE VICE PRESIDENT

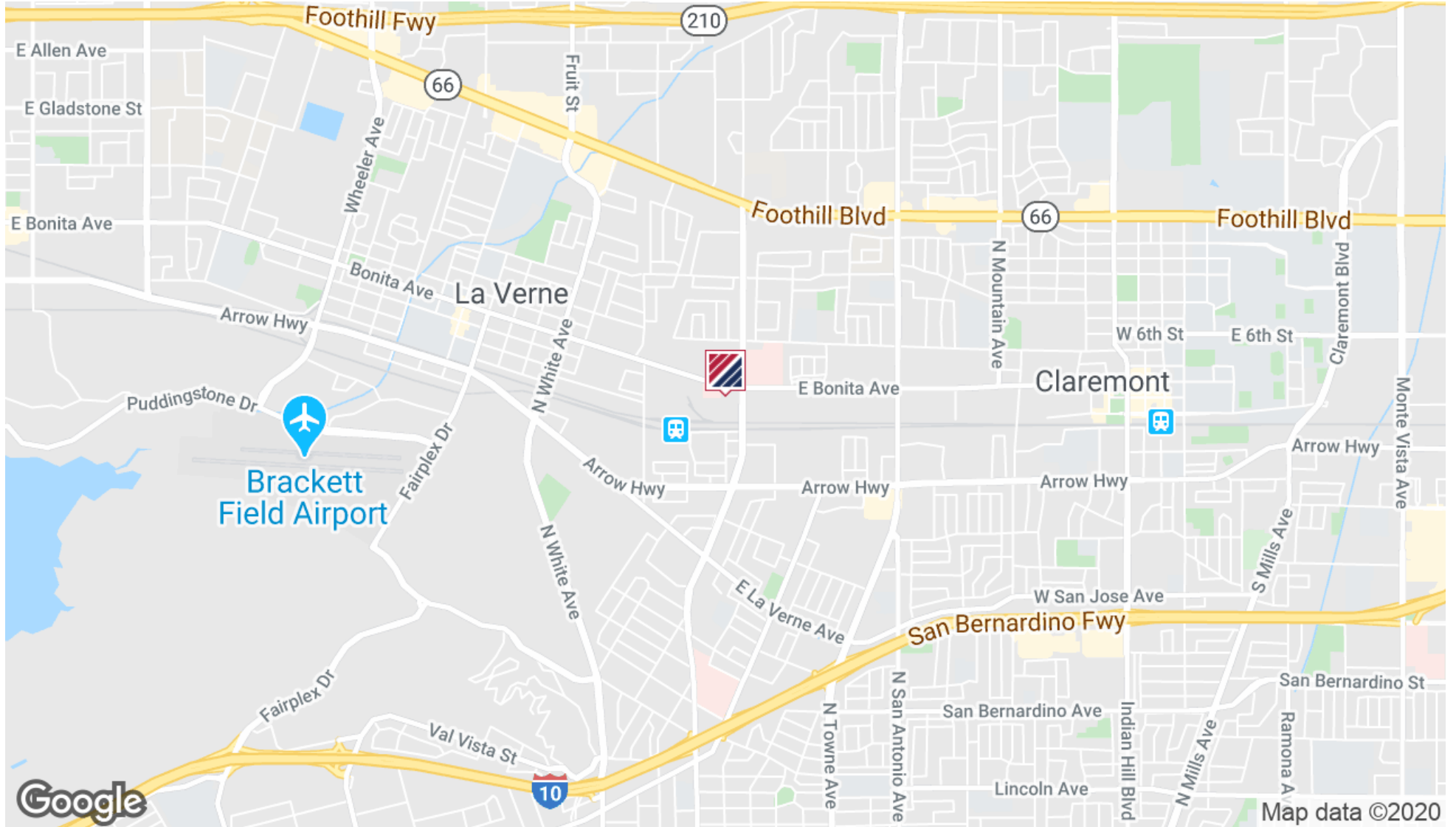
P: 909.912.0007
noah.samarin@daumcommercial.com
CABRE #01755814

FOR LEASE

23,439 SF CLEAR SPAN BUILDING

2707

N. GAREY AVENUE
POMONA | CA



NOAH SAMARIN
EXECUTIVE VICE PRESIDENT

P: 909.912.0007
noah.samarin@daumcommercial.com
CABRE #01755814