

ELEVATING CORPORATE LIFE IN THE CONEJO VALLEY !



WESTLAKE PARK PLACE



3059 TOWNSGATE ROAD | WESTLAKE VILLAGE | CALIFORNIA
Phase II

www.westlakeparkplace.com



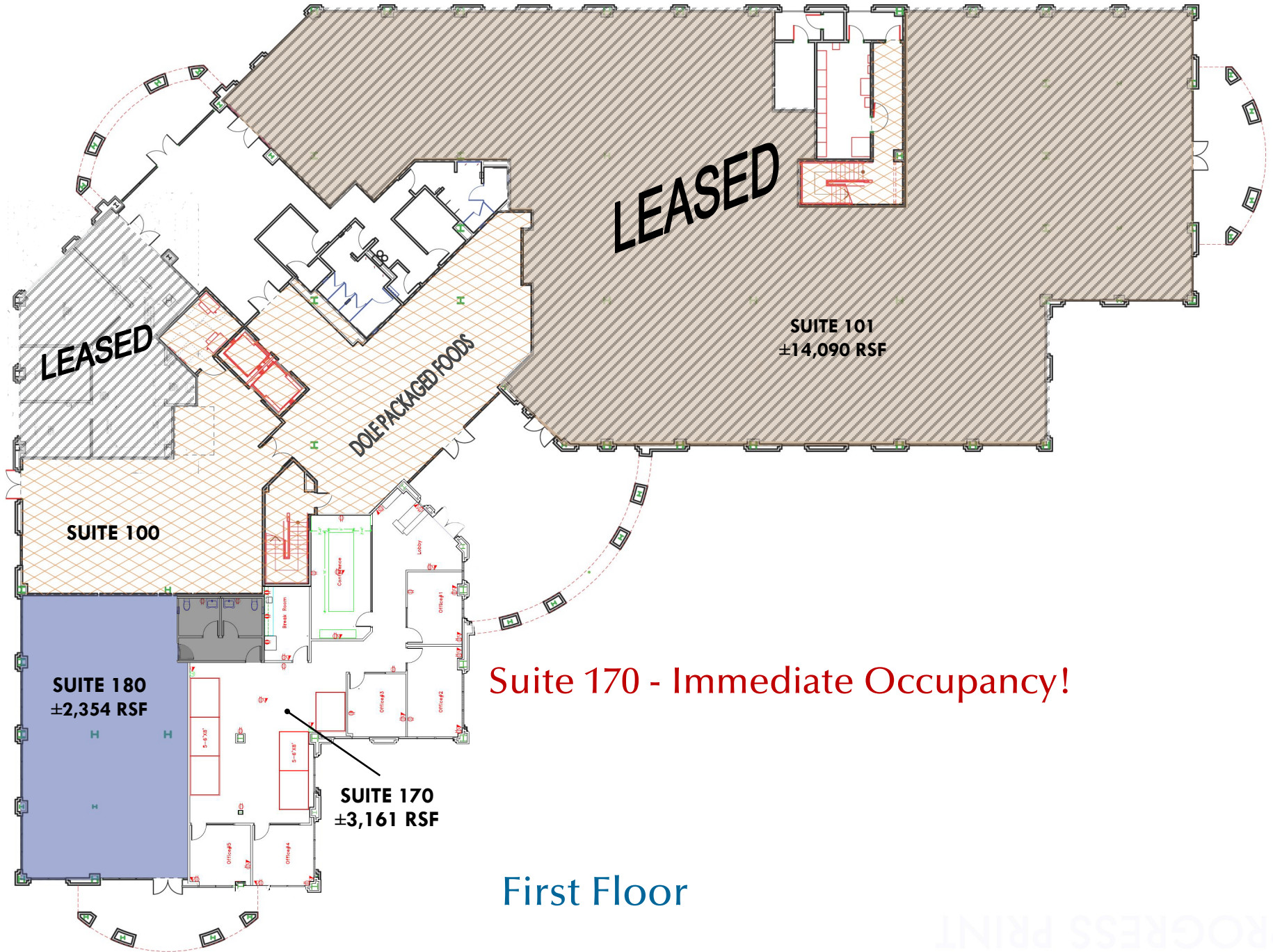
PHASE II



Suite 170 is Complete and Ready for Occupancy!
3,161 RSF

-  PRESTIGIOUS IMAGE
-  TENANT CAN PICK OUT STANDARD CARPET AND MOVE IN
-  DOUBLE GLASS SUITE ENTRY DOORS
-  5 OFFICES, LARGE CONFERENCE ROOM, LARGE OPEN AREA
-  RECEPTION AREA
-  LARGE BREAK ROOM
-  POTENTIAL EYEBROW SIGNAGE

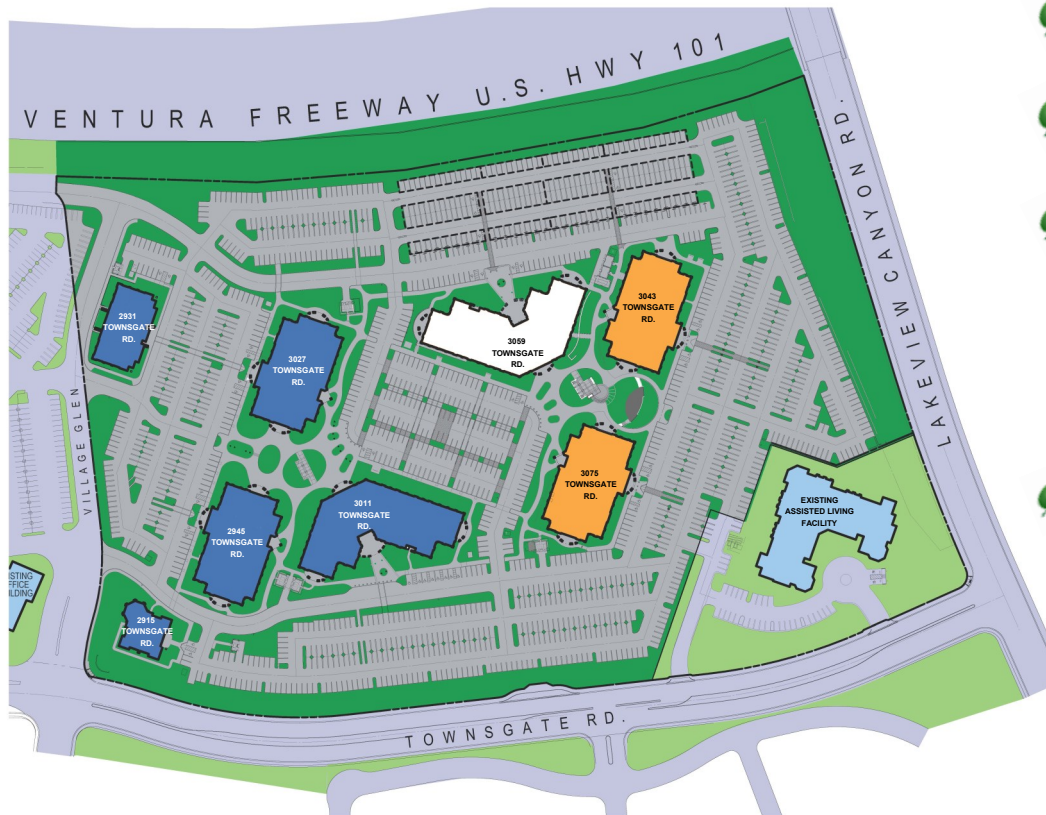




First Floor

WESTLAKE PARK PLACE

3059 TOWNSGATE ROAD
WESTLAKE VILLAGE | CALIFORNIA



Westlake Park Place Overview:

Westlake Park Place is the most significant and prestigious corporate headquarters development in the Conejo Valley, with unmatched visibility in the heart of the Westlake Village business district. Westlake Park Place is the preeminent Class "A" mid-rise suburban office complex, utilizing Mediterranean style architecture surrounding a central park-like core. Each building features a state-of-the-art and energy-efficient mechanical, electrical, life safety and security system.

Developed By:

SEARLES
PROPERTY
GROUP



-  **Ideal for a Single Building or Full Floor Tenant**
-  **Part of a 27- Acre Development in the Heart of the Burgeoning Conejo Valley, directly off the 101 Freeway.**
-  **Join Such Tenants as Dole Packaged Foods; Sugar Foods Corporation Private National Mortgage Acceptance, LLC; Pacific Western Bank; Comerica; Ernest & Young; Raymond James Financial; Global-wide Media; Regus Executive Suites; Charles Schwab; Stifel Nicolaus & Company; Richard Marks Esq., Summit Financial Consultants; Inc.; Anton & Chia LLP.; UBS; Euler Hermes, Bibby Financial and Wells Fargo and MATT Construction to name a few.**
-  **Flexible Floor Plan Design for Efficient Layout**

www.westlakeparkplace.com

AVAILABLE SPACE

- SUITE 170** ±3,161 RSF - Glass Door Entry, Possible Eyebrow Signage, Ready for Occupancy
- SUITE 180** ±2,354 RSF - Glass Double Door Entry, Full Height Exterior Glass

For Leasing Information, Contact:

Mike Foxworthy
DAUM Commercial Real Estate
Phone: 805.384.8830
Mike.Foxworthy@daumcommercial.com
CA License # 00773787

Craig Cahow
DAUM Commercial Real Estate
Phone: 818.449-1637
craig.cahow@daumcommercial.com
CA License # 00498717



751 E. Daily Drive, Suite 105
Camarillo, CA 93010
D/AQ Corp. #01129558



21820 Burbank Blvd., Suite 201
Woodland Hills, CA 91367
D/AQ Corp. #01129558

* Although all information is furnished is believed to be reliable. We do not guarantee its accuracy. Any assumptions or projections are used for example and do not represent actual or projections or future performance. Consult your accountant or tax professional for advice. D/AQ Corp. # 01129558