



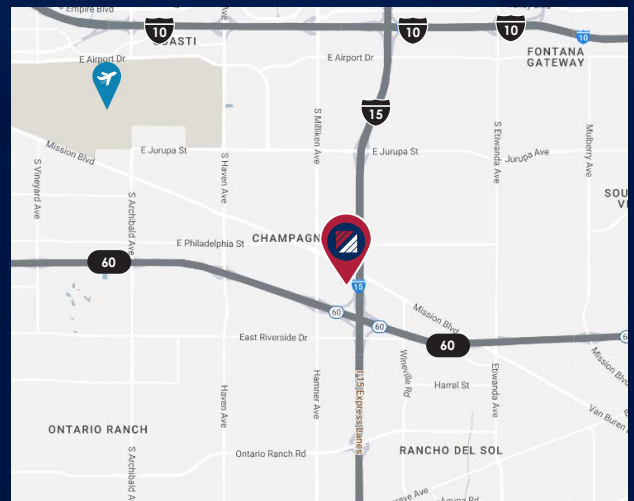
# FOR LEASE

**±44,064 SF WAREHOUSE W/ ±1.5 AC YARD**

**3230 CORNERSTONE DR. | EASTVALE, CA**

## PROPERTY HIGHLIGHTS

- ±44,064 SF Available
- 1.5 AC Fenced & Gated Yard
- ±3,361 SF 2 Story Office Space
- 28' Clear Height
- 400 Amps, 277/480 V (Expandable) Verify
- 4 Dock High Doors with Levelers
- 2 Ground Level Oversized Doors



FOR MORE INFORMATION, PLEASE CONTACT:

**NOAH SAMARIN**  
EXECUTIVE VICE PRESIDENT | PRINCIPAL  
P: 909.912.0007 | M: 714.812.1289  
noah.samarin@daumcommercial.com  
CADRE #01755814

**CONNOR IM**  
ASSOCIATE  
P: 909.912.0020 | M: 253.592.4258  
cim@daumcommercial.com  
CADRE # 02109272

**DAUM**  
COMMERCIAL REAL ESTATE SERVICES

Although all information is furnished regarding for sale, rental or financing from sources deemed reliable, such information has not been verified and no express representation is made nor is any to be implied as to the accuracy thereof, and it is submitted subject to errors, omissions, changes of price, rental or other conditions, prior sale, lease or financing, or withdrawal without notice. All Maps provided courtesy of Google Maps, Bing Maps, and Google Earth. D/AQ Corp. # 01129558

# FOR LEASE

±44,064 SF WAREHOUSE W/ ±1.5 AC YARD  
3230 CORNERSTONE DR. | EASTVALE, CA



FOR MORE INFORMATION, PLEASE CONTACT:

**NOAH SAMARIN**

EXECUTIVE VICE PRESIDENT | PRINCIPAL

P: 909.912.0007 | M: 714.812.1289

[noah.samarin@daumcommercial.com](mailto:noah.samarin@daumcommercial.com)

CADRE #01755814

**CONNOR IM**

ASSOCIATE

P: 909.912.0020 | M: 253.592.4258

[cim@daumcommercial.com](mailto:cim@daumcommercial.com)

CADRE # 02109272

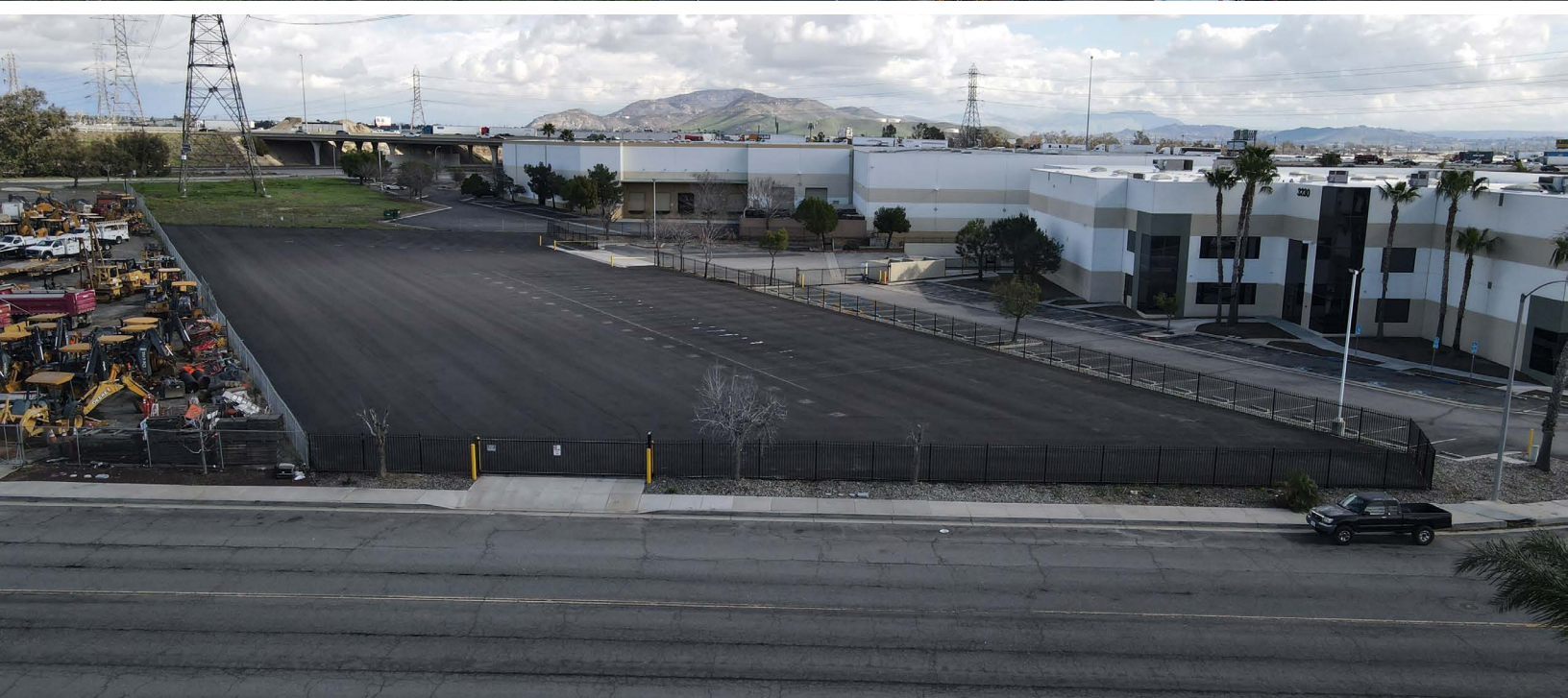
**DAUM**  
COMMERCIAL REAL ESTATE SERVICES

Although all information is furnished regarding for sale, rental or financing from sources deemed reliable, such information has not been verified and no express representation is made nor is any to be implied as to the accuracy thereof, and it is submitted subject to errors, omissions, changes of price, rental or other conditions, prior sale, lease or financing, or withdrawal without notice. All Maps provided courtesy of Google Maps, Bing Maps, and Google Earth. D/AQ Corp. # 01129558

# FOR LEASE

±44,064 SF WAREHOUSE W/ ±1.5 AC YARD

3230 CORNERSTONE DR. | EASTVALE, CA



FOR MORE INFORMATION, PLEASE CONTACT:

**NOAH SAMARIN**

EXECUTIVE VICE PRESIDENT | PRINCIPAL

P: 909.912.0007 | M: 714.812.1289

[noah.samarin@daumcommercial.com](mailto:noah.samarin@daumcommercial.com)

CADRE #01755814

**CONNOR IM**

ASSOCIATE

P: 909.912.0020 | M: 253.592.4258

[cim@daumcommercial.com](mailto:cim@daumcommercial.com)

CADRE # 02109272

**DAUM**  
COMMERCIAL REAL ESTATE SERVICES

Although all information is furnished regarding for sale, rental or financing from sources deemed reliable, such information has not been verified and no express representation is made nor is any to be implied as to the accuracy thereof, and it is submitted subject to errors, omissions, changes of price, rental or other conditions, prior sale, lease or financing, or withdrawal without notice. All Maps provided courtesy of Google Maps, Bing Maps, and Google Earth. D/AQ Corp. # 01129558

# FOR LEASE

±44,064 SF WAREHOUSE W/ ±1.5 AC YARD

3230 CORNERSTONE DR. | EASTVALE, CA



FOR MORE INFORMATION, PLEASE CONTACT:

**NOAH SAMARIN**

EXECUTIVE VICE PRESIDENT | PRINCIPAL

P: 909.912.0007 | M: 714.812.1289

noah.samarin@daumcommercial.com

CADRE #01755814

**CONNOR IM**

ASSOCIATE

P: 909.912.0020 | M: 253.592.4258

cim@daumcommercial.com

CADRE # 02109272

**DAUM**  
COMMERCIAL REAL ESTATE SERVICES

Although all information is furnished regarding for sale, rental or financing from sources deemed reliable, such information has not been verified and no express representation is made nor is any to be implied as to the accuracy thereof, and it is submitted subject to errors, omissions, changes of price, rental or other conditions, prior sale, lease or financing, or withdrawal without notice. All Maps provided courtesy of Google Maps, Bing Maps, and Google Earth. D/AQ Corp. # 01129558

