

3,170 SF

# Opportunity in the Hayden Tract

3578 Hayden Avenue | Culver City, CA | 90232



3578



## CONTACT

David Freitag | P: 213.270.2235  
David.Freitag@daumcre.com  
CA License #00855673  
www.daumcommercial.com

Imani McMillan | P: 213.270.2230  
Imani.Mcmillan@daumcre.com  
CA License #02057115

D/AQ Corp. #01129558. Maps Courtesy ©Google & ©Microsoft. Although all information is furnished regarding for sale, rental or financing is from sources deemed reliable, such information has not been verified and no express representation is made nor is any to be implied as to the accuracy thereof, and it is submitted subject to errors, omissions, changes of price, rental or other conditions, prior sale, lease or financing, or withdrawal without notice.

3,170 SF

# Opportunity in the Hayden Tract

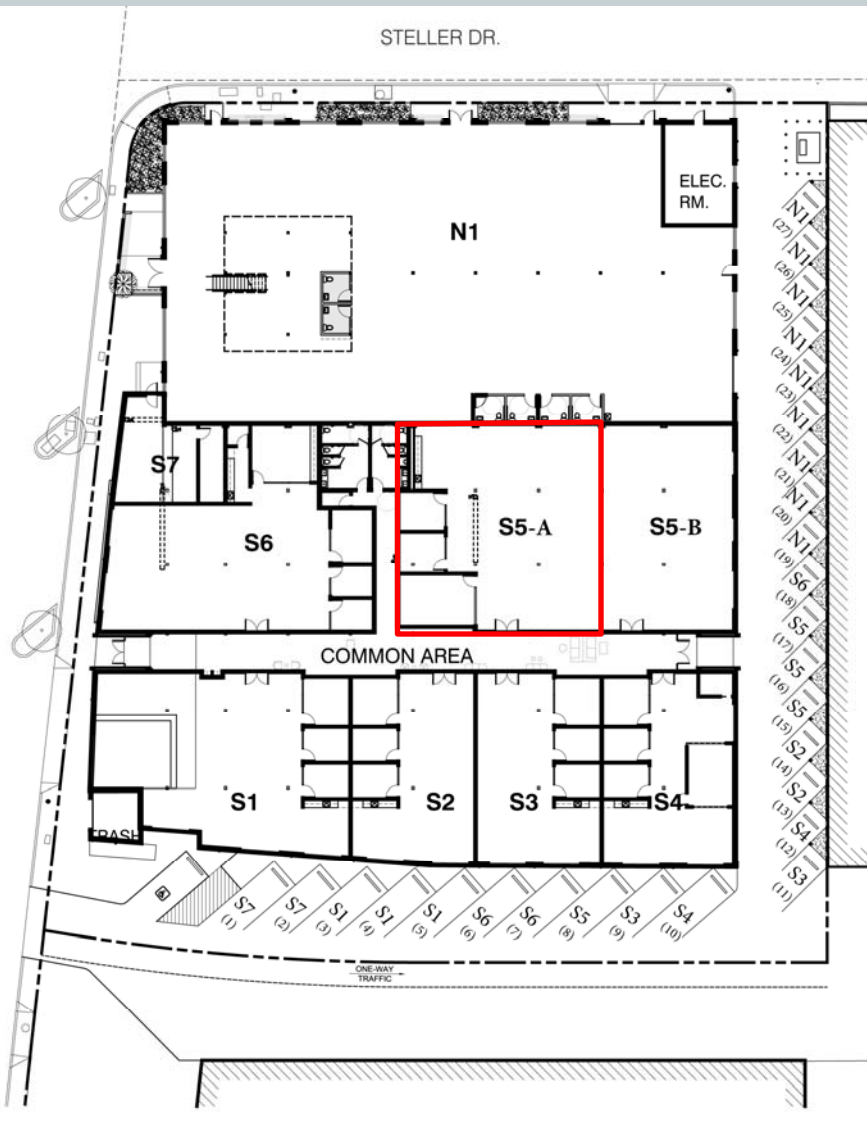
3578 Hayden Avenue | Culver City, CA | 90232

## Available Immediately

Suite S5-A 3,170 SF

### Features:

- Contemporary Creative Office Conversion
- HVAC in Each Suite
- Skylights
- Polished Concrete Floors
- Exposed Wood Truss Ceiling
- Operable Torrance Windows
- Destroyer Café On-Site
- Kitchen in Each Suite
- Light Rail Stop at Washington & National
- Asking \$4.20 Industrial Gross, Plus CAM



### CONTACT

David Freitag | P: 213.270.2235

David.Freitag@daumcre.com

CA License #00855673

www.daumcommercial.com

Imani McMillan | P: 213.270.2230

Imani.Mcmillan@daumcre.com

CA License #02057115

D/AQ Corp. #01129558. Maps Courtesy ©Google & ©Microsoft. Although all information is furnished regarding for sale, rental or financing is from sources deemed reliable, such information has not been verified and no express representation is made nor is any to be implied as to the accuracy thereof, and it is submitted subject to errors, omissions, changes of price, rental or other conditions, prior sale, lease or financing, or withdrawal without notice.