



EXCELLENT DISTRIBUTION CENTER

21300

SUPERIOR STREET
CHATSWORTH | CA 91311

FOR LEASE ±10,224 SF

Industrial Building

CONTACT BELOW FOR MORE INFORMATION:

KEVIN TAMURA

P: 818.449.1631

F: 818.975.5259

E: KTamura@daumcre.com

CA License #00912212

JACK STONE

M: 747.217.1832

D: 818.449.1622

E: JStone@daumcre.com

CA License #02070402

MICHAEL CHASE

M: 310.415.0472

D: 818.449.1633

E: MChase@daumcre.com

CA License #02071146



D/AQ Corp. #01129558. Maps Courtesy @Google & @Microsoft. Although all information is furnished regarding for sale, rental or financing is from sources deemed reliable, such information has not been verified and no express representation is made nor is any to be implied as to the accuracy thereof, and it is submitted subject to errors, omissions, changes of price, rental or other conditions, prior sale, lease or financing, or withdrawal without notice.

ONCOR INTERNATIONAL | www.daumcommercial.com

FOR LEASE

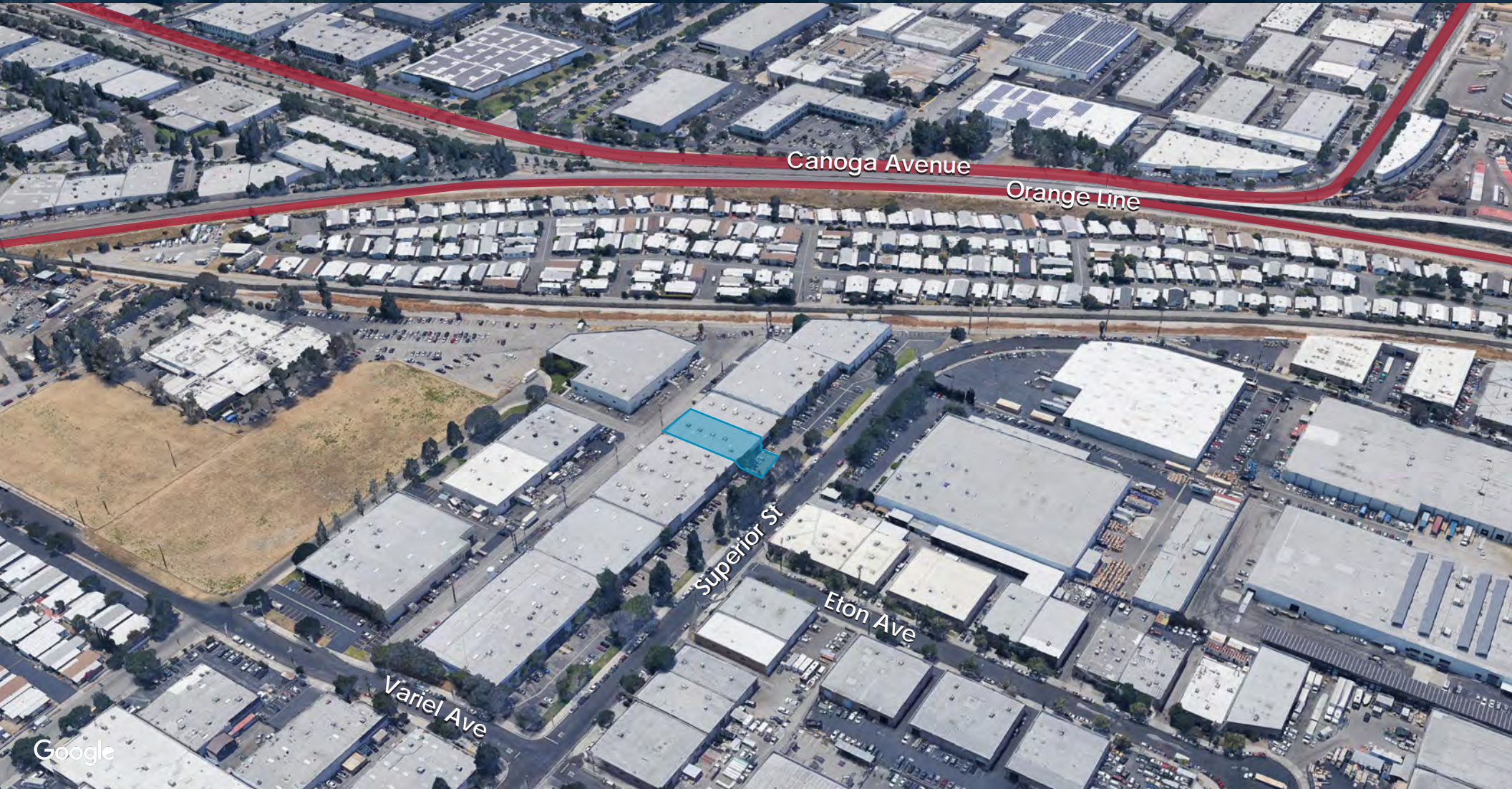
±10,224 SF INDUSTRIAL BUILDING

21300

21306

21300

SUPERIOR STREET
CHATSWORTH | CA, 91311



Google



D/AQ Corp. #01129558. Maps Courtesy ©Google & ©Microsoft. Although all information is furnished regarding for sale, rental or financing is from sources deemed reliable, such information has not been verified and no express representation is made nor is any to be implied as to the accuracy thereof, and it is submitted subject to errors, omissions, changes of price, rental or other conditions, prior sale, lease or financing, or withdrawal without notice.



21300

SUPERIOR STREET
CHATSWORTH | CA, 91311

PROPERTY HIGHLIGHTS

- Chatsworth Industrial Park
- Rare Dock, High Loading
- 18' Clear Height
- Ample Office Space
- MR2 Zoning
- 400 Amps Power
- Excellent Distribution Center
- **Asking Price: \$1.07/SF NNN**



D/AQ Corp. #01129558. Maps Courtesy @Google & @Microsoft. Although all information is furnished regarding for sale, rental or financing is from sources deemed reliable, such information has not been verified and no express representation is made nor is any to be implied as to the accuracy thereof, and it is submitted subject to errors, omissions, changes of price, rental or other conditions, prior sale, lease or financing, or withdrawal without notice.

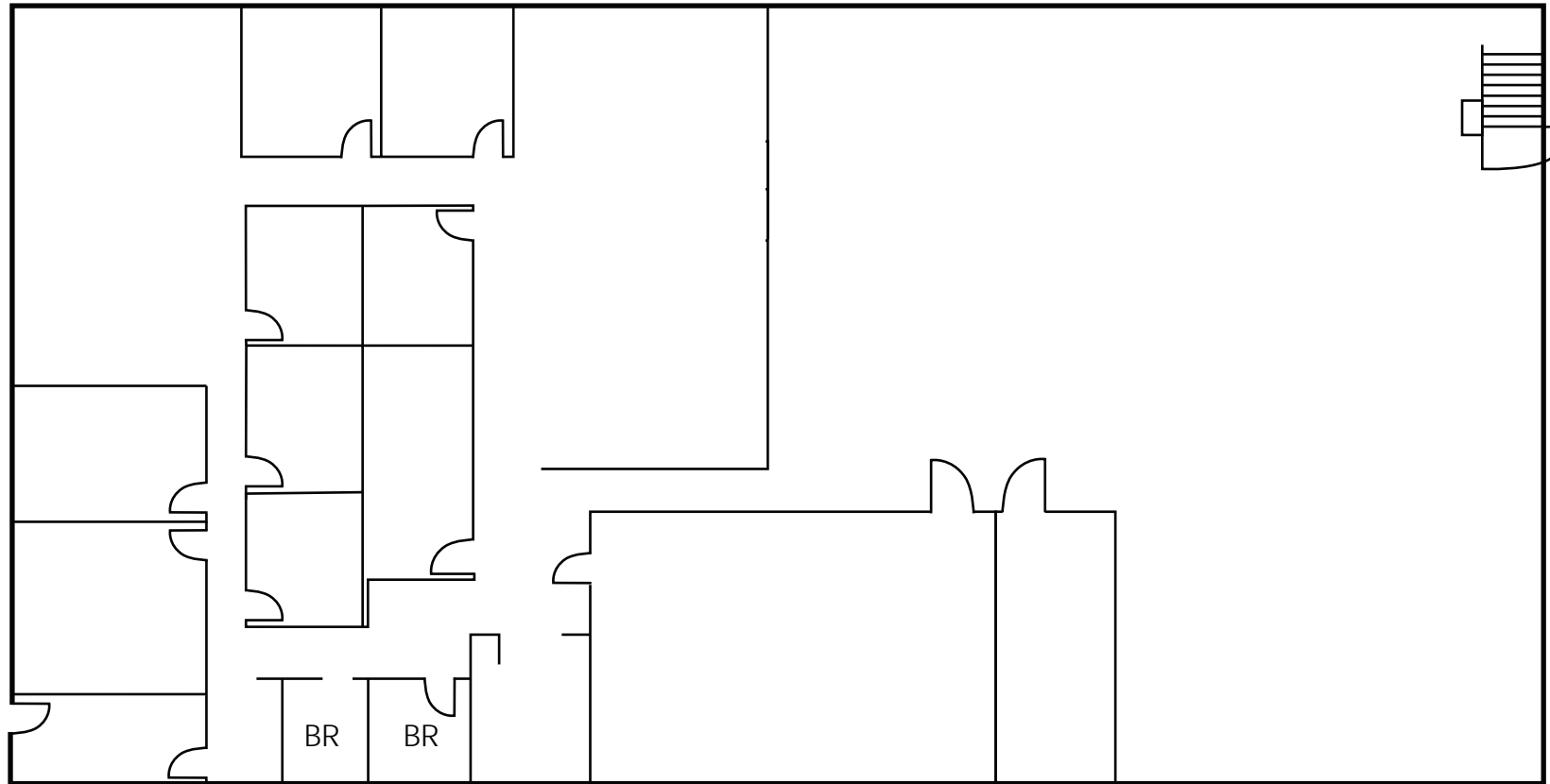
FOR LEASE

±10,224 SF INDUSTRIAL BUILDING

21300

SUPERIOR STREET
CHATSWORTH | CA, 91311

FLOOR PLAN



FOR LEASE

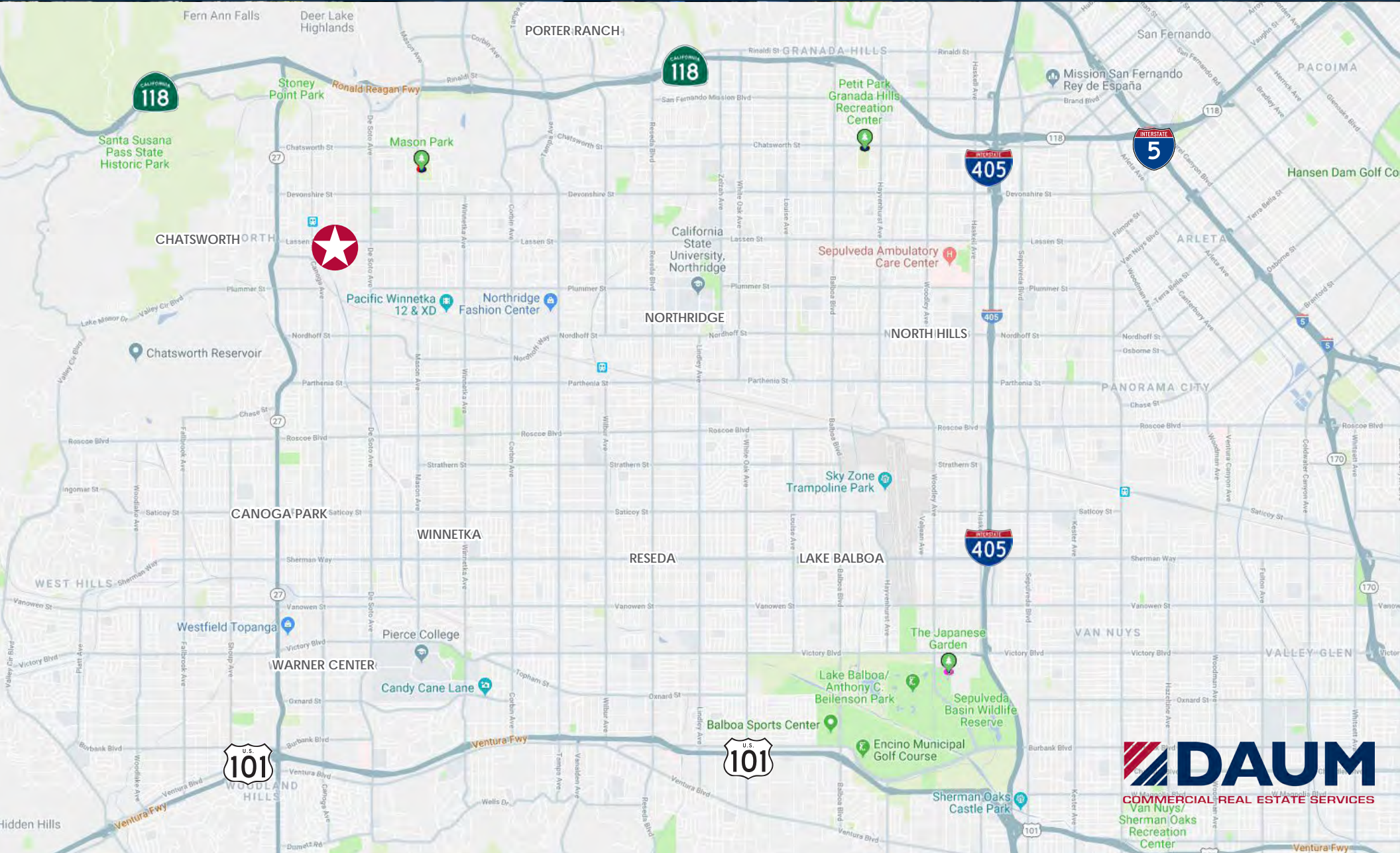
±10,224 SF INDUSTRIAL BUILDING

21300

21306

21300

SUPERIOR STREET
CHATSWORTH | CA, 91311



DAUM
COMMERCIAL REAL ESTATE SERVICES
Van Nuys/
Sherman Oaks
Recreation
Center