

±6,580 SF INDUSTRIAL

FOR LEASE

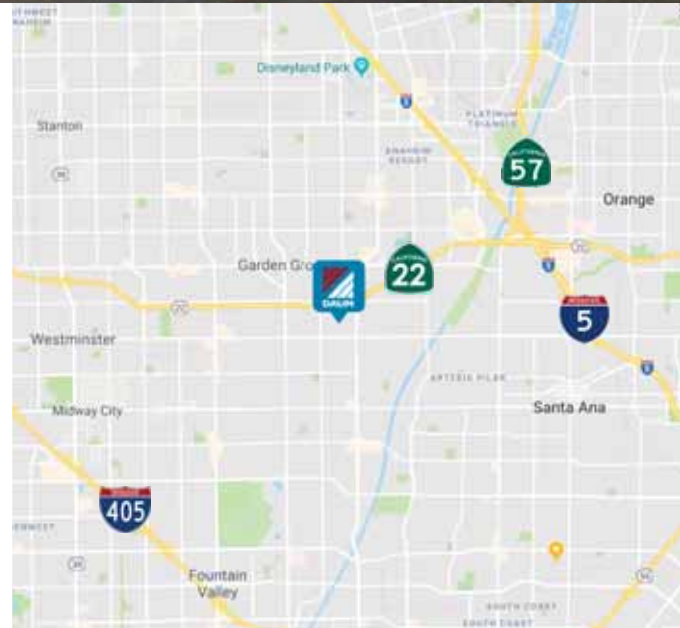
13941

SEABOARD CIRCLE
GARDEN GROVE, CA



PROPERTY HIGHLIGHTS

- 1,500 SF of Office (Approximately)
- Two Restrooms
- Two GL Doors (10' x 12')
- Clear Span Warehouse
- Private | Fenced Yard
- 400 Amps | 208/120 | 3-Phase
- 16 Ft. Clear Height
- Warehouse Skylights
- 2:1,000 Parking Ratio
- Good Access to , ,  &  Freeways



EXCLUSIVELY LISTED BY:

MIKE BARREIRO

EXECUTIVE VICE PRESIDENT | PRINCIPAL

P: 949.242.1706

E: mike.barreiro@daumcommercial.com

CA License #01712620

GAVIN DENNISTON

VICE PRESIDENT

P: 949.242.1711

E: gavin.denniston@daumcommercial.com

CA License: #01837752

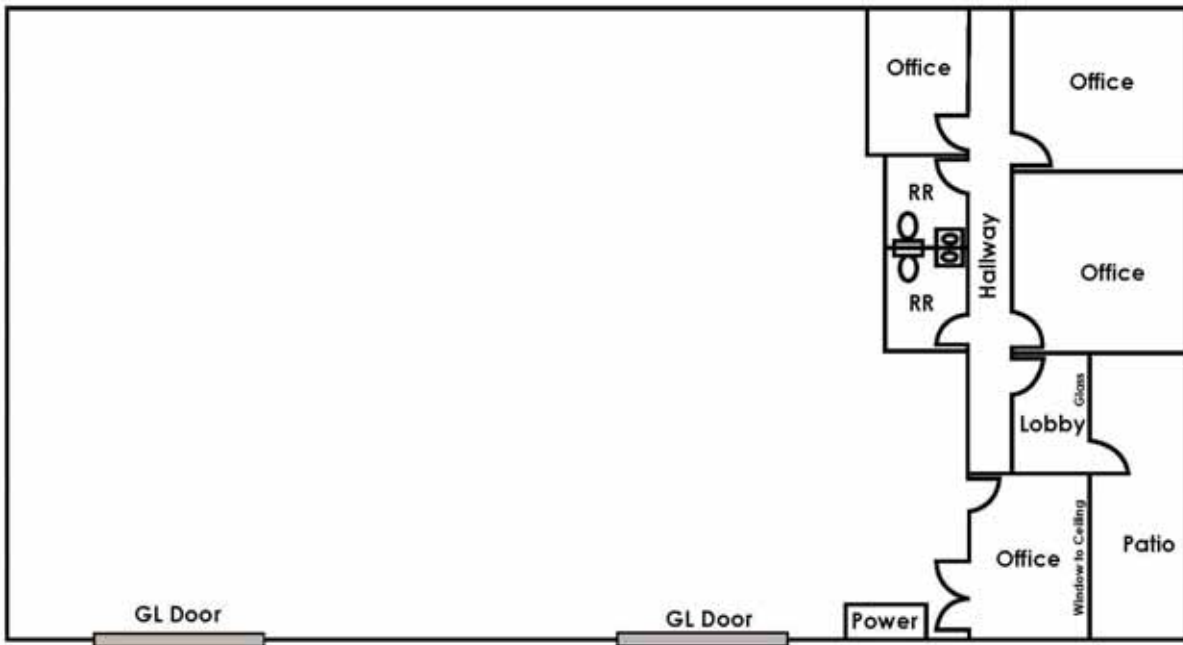
DAUM
COMMERCIAL REAL ESTATE SERVICES
ONCOR INTERNATIONAL
www.daumcommercial.com

±6,580 SF INDUSTRIAL

FOR LEASE

13941

SEABOARD CIRCLE
GARDEN GROVE, CA



EXCLUSIVELY LISTED BY:

MIKE BARREIRO

EXECUTIVE VICE PRESIDENT | PRINCIPAL

P: 949.242.1706

E: mike.barreiro@daumcommercial.com

CA License #01712620

GAVIN DENNISTON

VICE PRESIDENT

P: 949.242.1711

E: gavin.denniston@daumcommercial.com

CA License: #01837752

