

FOR SALE

2 ACRE LAND SITE

14630 FOOTHILL BOULEVARD

FONTANA, CA



DAUM
COMMERCIAL REAL ESTATE SERVICES

LEE SPENCE | Executive Vice President
P: 909.652.9044 | C: 909.969.8800
lee.spence@daumcommercial.com
CA License No. 00954487

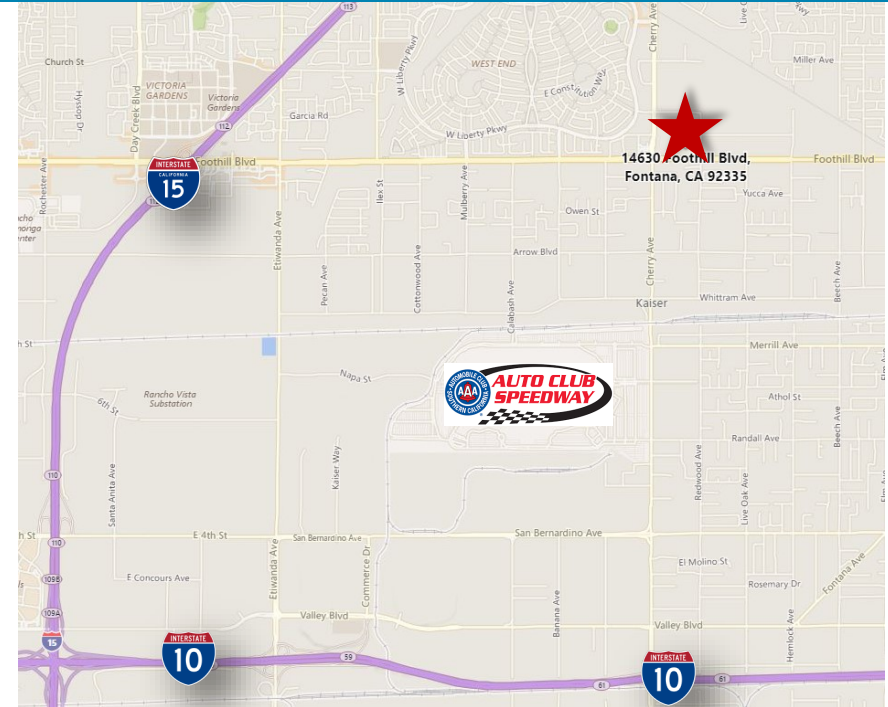
MARK SCHAFFER | Associate
P: 909.652.9052 | C: 949.923.9890
mark.schafer@daumcommercial.com
CA License No. 01902664

FOR SALE

2 ACRE LAND SITE

14630 FOOTHILL BOULEVARD

FONTANA, CA



LAND FEATURES INCLUDE

- Approximately 2 Acres Commercial Land
- On High Traffic Foothill Boulevard (Route 66)
- Curb, Gutter, Street Lights Sidewalk & Fire Hydrant in Place
- APN: 1110-141-16
- List Price: \$1,088,000 (\$12.49/SF)



D/AQ Corp. #01129558. Maps Courtesy ©Google & ©Microsoft. Although all information is furnished regarding for sale, rental or financing is from sources deemed reliable, such information has not been verified and no express representation is made nor is any to be implied as to the accuracy thereof, and it is submitted subject to errors, omissions

LEE SPENCE | Executive Vice President
P: 909.652.9044 | C: 909.969.8800
lee.spence@daumcommercial.com
CA License No. 00954487

MARK SCHAFER | Associate
P: 909.652.9052 | C: 949.923.9890
mark.schafer@daumcommercial.com
CA License No. 01902664

FOR SALE

2 ACRE LAND SITE

14630 FOOTHILL BOULEVARD

FONTANA, CA



D/AQ Corp. #01129558. Maps Courtesy ©Google & ©Microsoft. Although all information is furnished regarding for sale, rental or financing is from sources deemed reliable, such information has not been verified and no express representation is made nor is any to be implied as to the accuracy thereof, and it is submitted subject to errors, omis-

LEE SPENCE | Executive Vice President
P: 909.652.9044 | C: 909.969.8800
lee.spence@daumcommercial.com
CA License No. 00954487

MARK SCHAFFER | Associate
P: 909.652.9052 | C: 949.923.9890
mark.schafer@daumcommercial.com
CA License No. 01902664

FOR SALE

2 ACRE LAND SITE

14630 FOOTHILL BOULEVARD

FONTANA, CA

ZONING MAP

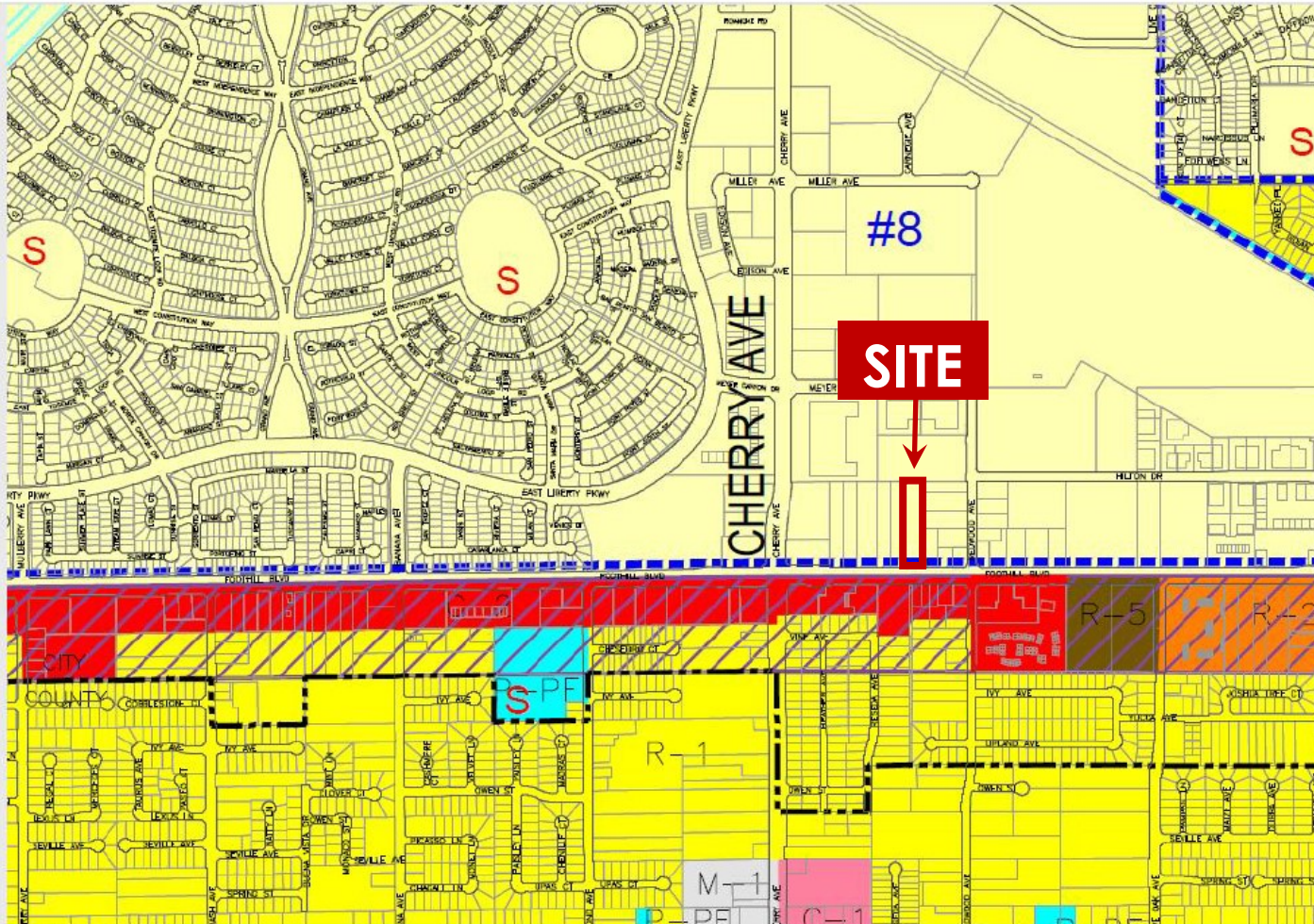
ALLOWED USES

WEST END CLI COMMERCIAL LIGHT INDUSTRIAL (CLI)

- Administrative Offices
- Government Offices
- Medical
- Dental
- Research Laboratories and Facilities
- Café or Restaurant
- Retail Sales
- Service and Repair Establishments
- Car Wash
- Day Care/Child Care
- Schools
- Equipment Rental

CONDITIONALLY PERMITTED USES

- Automobile Sales Agency
- Assembly or Meeting Hall
- Check Cashing
- Day Care/Child Care 24 Hr (7 children or more)
- Heavy Contractor's Equipment Rental
- Independent Contractor-Plumber, Electrician (outdoor storage prohibited)
- Mini Warehouse
- Smoking Lounge, Head Shop, Smoke Shop, Hookah Lounge



D/AQ Corp. #01129558. Maps Courtesy ©Google & ©Microsoft. Although all information is furnished regarding for sale, rental or financing is from sources deemed reliable, such information has not been verified and no express representation is made nor is any to be implied as to the accuracy thereof, and it is submitted subject to errors, omissions

LEE SPENCE | Executive Vice President
P: 909.652.9044 | C: 909.969.8800
lee.spence@daumcommercial.com
CA License No. 00954487

MARK SCHAFFER | Associate
P: 909.652.9052 | C: 949.923.9890
mark.schafer@daumcommercial.com
CA License No. 01902664