

**FOR LEASE/SALE**  
**15,500 SF**

# 15225 S. MAIN ST., GARDENA

UNINCORPORATED LOS ANGELES COUNTY | CA



W. REDONDO BEACH BLVD.

**FOR MORE  
INFORMATION,  
CONTACT:**

**CHUCK BRILL**  
Executive Vice President | Principal  
P: 310.538.6710 | M: 310.710.3127  
chuck.brill@daumcommercial.com  
CA DRE License # 00974481

**JAMES REYNOLDS**  
Associate  
P: 310.538.6716 | M: 310.406.6581  
jreynolds@daumcommercial.com  
CA DRE License # 02179891

**SUZANNE SULLIVAN**  
Associate  
P: 310.538.6719 | M: 310.721.5832  
ssullivan@daumcommercial.com  
CA DRE License # 02230120

  
COMMERCIAL REAL ESTATE SERVICES

Although all information is furnished regarding for sale, rental or financing is from sources deemed reliable, such information has not been verified and no express representation is made nor is any to be implied as to the accuracy thereof, and it is submitted subject to errors, omissions, changes of price, rental or other conditions, prior sale, lease or financing, or withdrawal without notice. All maps courtesy of Google Maps, Bing, and Google Earth. D/AQ Corp. # 01129558

# 15225 S. MAIN ST., GARDENA

UNINCORPORATED LOS ANGELES COUNTY|CA

## PROPERTY HIGHLIGHTS

- 15,500 SF Available for Lease or Sale
- Ideal For Small Manufacturing User
- Dock High And Ground Level Loading
- Private, Paved, Fenced Yard
- Unincorporated Los Angeles County
- Excellent High Identity Corner Location
- A Few Blocks East of 110 Freeway
- Sale: \$4,417,500.00 (\$285 PSF)
- Lease: \$1.00 PSF Gross for Months 1-9, then \$1.35 PSF thereafter
- Available September 1, 2024

FOR MORE INFORMATION, CONTACT:

### CHUCK BRILL

Executive Vice President | Principal  
P: 310.538.6710 | M: 310.710.3127  
chuck.brill@daumcommercial.com  
CA DRE License # 00974481

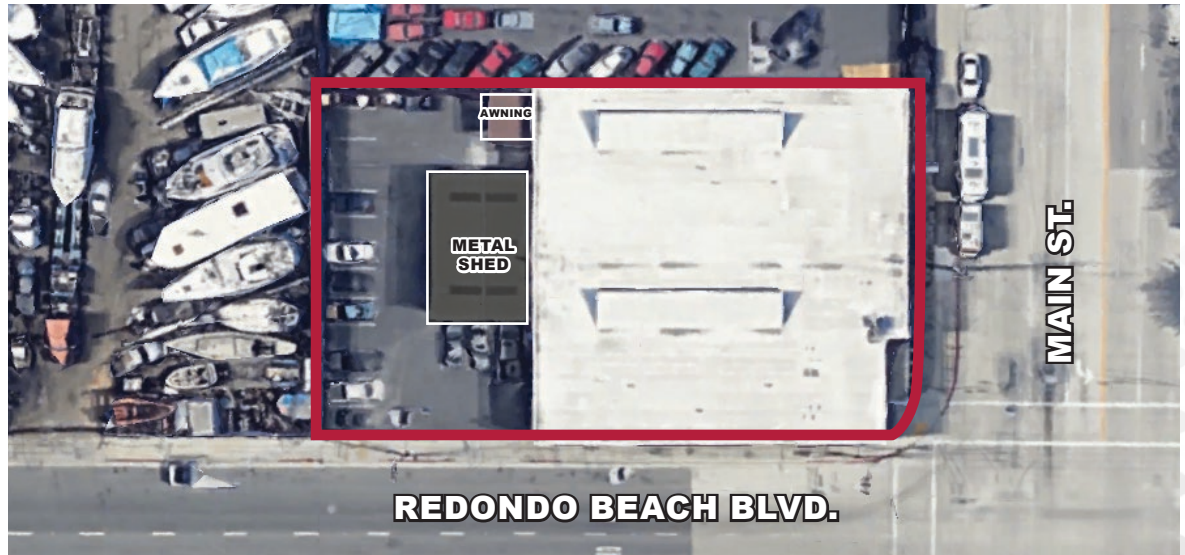
### JAMES REYNOLDS

Associate  
P: 310.538.6716 | M: 310.406.6581  
jreynolds@daumcommercial.com  
CA DRE License # 02179891

### SUZANNE SULLIVAN

Associate  
P: 310.538.6719 | M: 310.721.5832  
ssullivan@daumcommercial.com  
CA DRE License # 02230120

AVAILABLE FOR LEASE/SALE | 15,500 SF



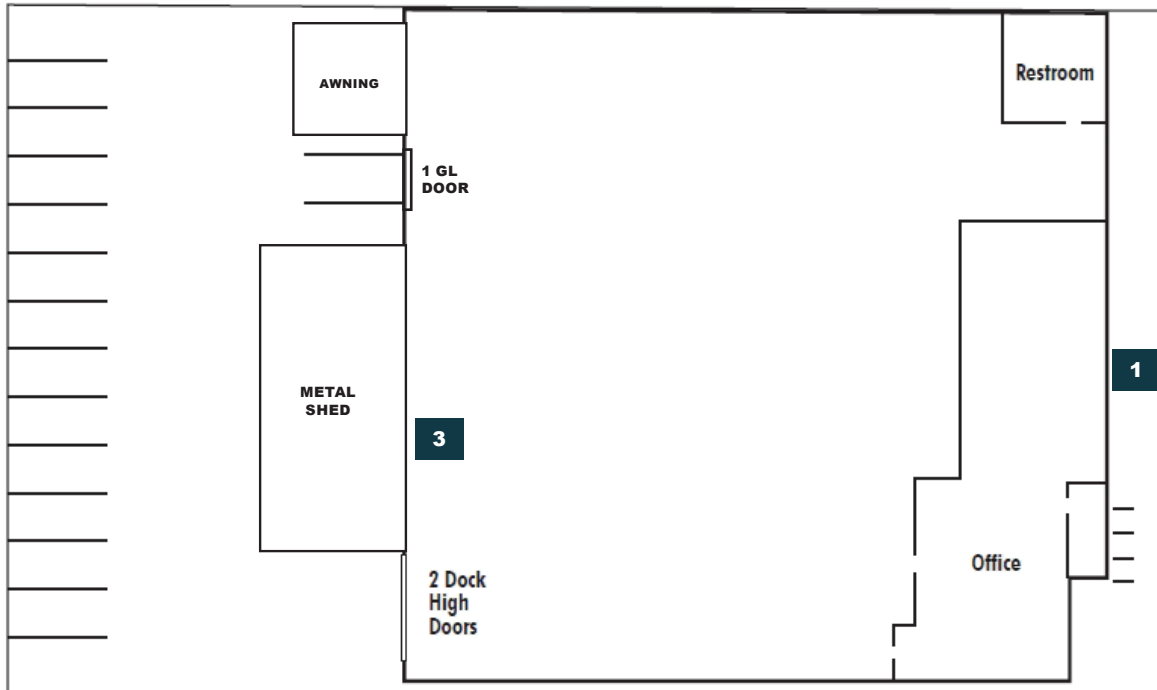
Although all information is furnished regarding for sale, rental or financing is from sources deemed reliable, such information has not been verified and no express representation is made nor is any to be implied as to the accuracy thereof, and it is submitted subject to errors, omissions, changes of price, rental or other conditions, prior sale, lease or financing, or withdrawal without notice. All maps courtesy of Google Maps, Bing, and Google Earth. D/AQ Corp. # 01129558


**DAUM**  
COMMERCIAL REAL ESTATE SERVICES

# 15225 S. MAIN ST., GARDENA

UNINCORPORATED LOS ANGELES COUNTY|CA

AVAILABLE FOR LEASE/SALE | 15,500 SF



 SITE PLAN NOT TO SCALE

REDONDO BEACH BLVD

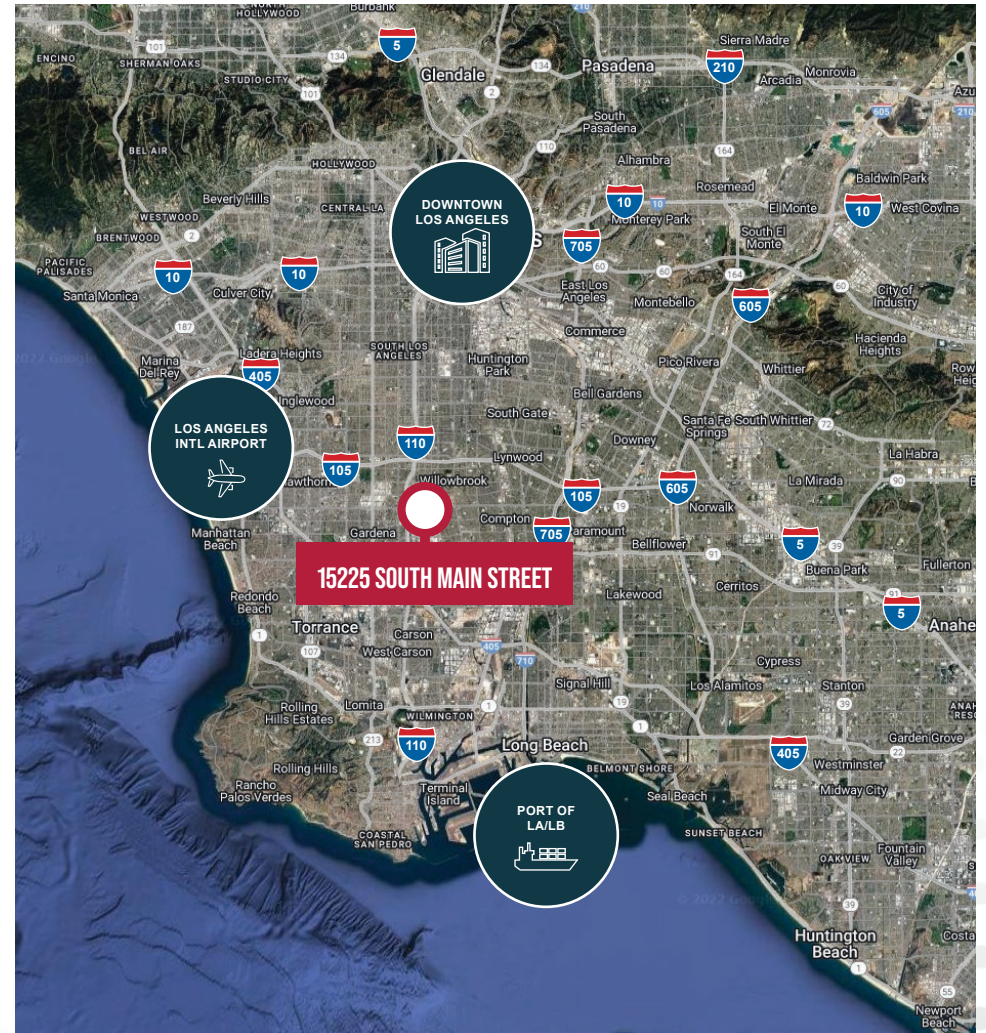
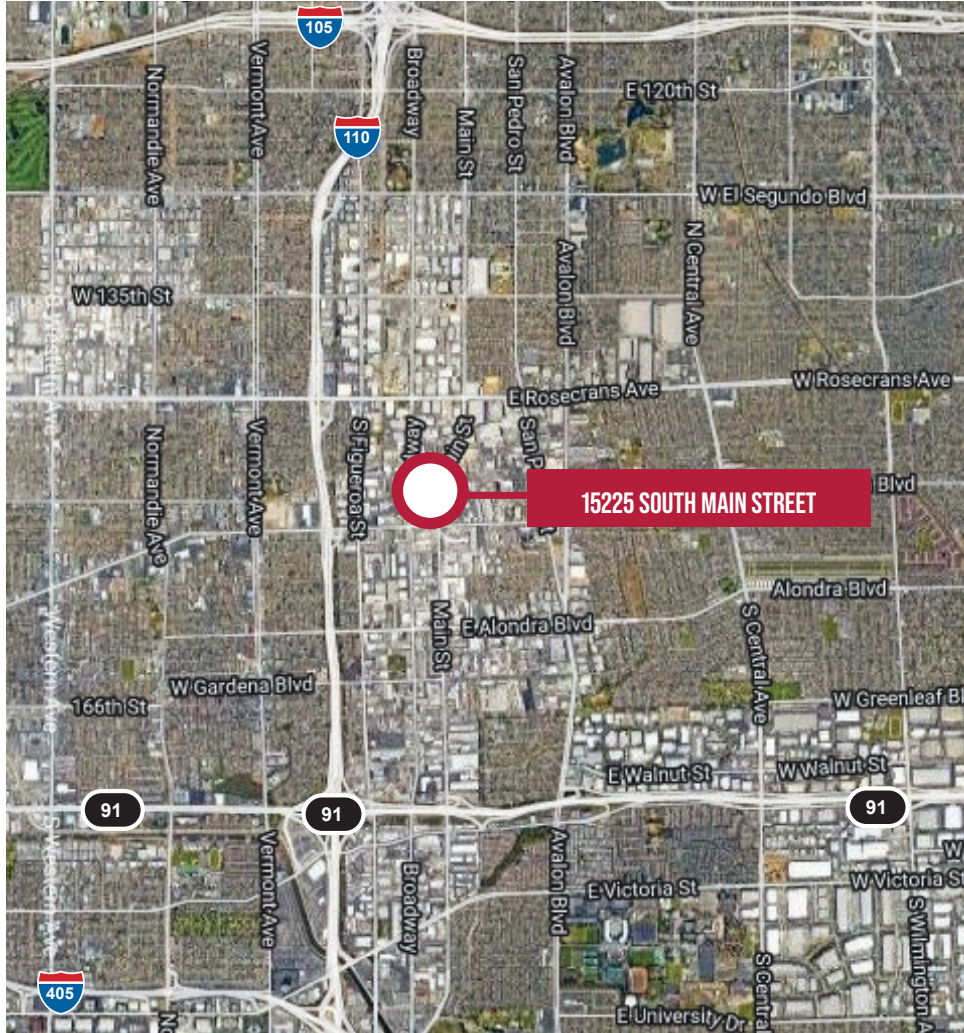
2



# 15225 S. MAIN ST., GARDENA

UNINCORPORATED LOS ANGELES COUNTY|CA

AVAILABLE FOR LEASE/SALE | 15,500 SF



Although all information is furnished regarding for sale, rental or financing is from sources deemed reliable, such information has not been verified and no express representation is made nor is any to be implied as to the accuracy thereof, and it is submitted subject to errors, omissions, changes of price, rental or other conditions, prior sale, lease or financing, or withdrawal without notice. All maps courtesy of Google Maps, Bing, and Google Earth. D/AQ Corp. # 01129558



AVAILABLE FOR LEASE/SALE | 15,500 SF  
**15225 S. MAIN STREET**  
**GARDENA**  
 UNINCORPORATED LOS ANGELES COUNTY | CA

FOR MORE INFORMATION, CONTACT:

**CHUCK BRILL**  
 Executive Vice President | Principal  
 P: 310.538.6710 | M: 310.710.3127  
 chuck.brill@daumcommercial.com  
 CA DRE License # 00974481

**JAMES REYNOLDS**  
 Associate  
 P: 310.538.6716 | M: 310.406.6581  
 jreynolds@daumcommercial.com  
 CA DRE License # 02179891

**SUZANNE SULLIVAN**  
 Associate  
 P: 310.538.6719 | M: 310.721.5832  
 ssullivan@daumcommercial.com  
 CA DRE License # 02230120

PORT OF LOS ANGELES & LONG BEACH

Although all information is furnished regarding for sale, rental or financing is from sources deemed reliable, such information has not been verified and no express representation is made nor is any to be implied as to the accuracy thereof, and it is submitted subject to errors, omissions, changes of price, rental or other conditions, prior sale, lease or financing, or withdrawal without notice. All maps courtesy of Google Maps, Bing, and Google Earth. D/AQ Corp. # 01129558