

FOR LEASE/SALE
15,500 SF

15225 S. MAIN ST., GARDENA

UNINCORPORATED LOS ANGELES COUNTY | CA



W. REDONDO BEACH BLVD.

MAIN STREET

**FOR MORE
INFORMATION,
CONTACT:**

CHUCK BRILL
Executive Vice President | Principal
P: 310.538.6710 | M: 310.710.3127
chuck.brill@daumcommercial.com
CA DRE License # 00974481

JAMES REYNOLDS
Associate
P: 310.538.6716 | M: 310.406.6581
jreynolds@daumcommercial.com
CA DRE License # 02179891

SUZANNE SULLIVAN
Associate
P: 310.538.6719 | M: 310.721.5832
ssullivan@daumcommercial.com
CA DRE License # 02230120


COMMERCIAL REAL ESTATE SERVICES

15225 S. MAIN ST., GARDENA

UNINCORPORATED LOS ANGELES COUNTY|CA

PROPERTY HIGHLIGHTS

- 15,500 SF Available for Lease or Sale
- Ideal For Small Manufacturing User
- Dock High And Ground Level Loading
- Private, Paved, Fenced Yard
- Unincorporated Los Angeles County
- Excellent High Identity Corner Location
- A Few Blocks East of 110 Freeway
- Sale: \$4,417,500.00 (\$285 PSF)
- Lease: \$1.00 PSF Gross for Months 1-9, then 1.35 PSF thereafter
- Available September 1, 2024

FOR MORE INFORMATION, CONTACT:

CHUCK BRILL

Executive Vice President | Principal
P: 310.538.6710 | M: 310.710.3127
chuck.brill@daumcommercial.com
CA DRE License # 00974481

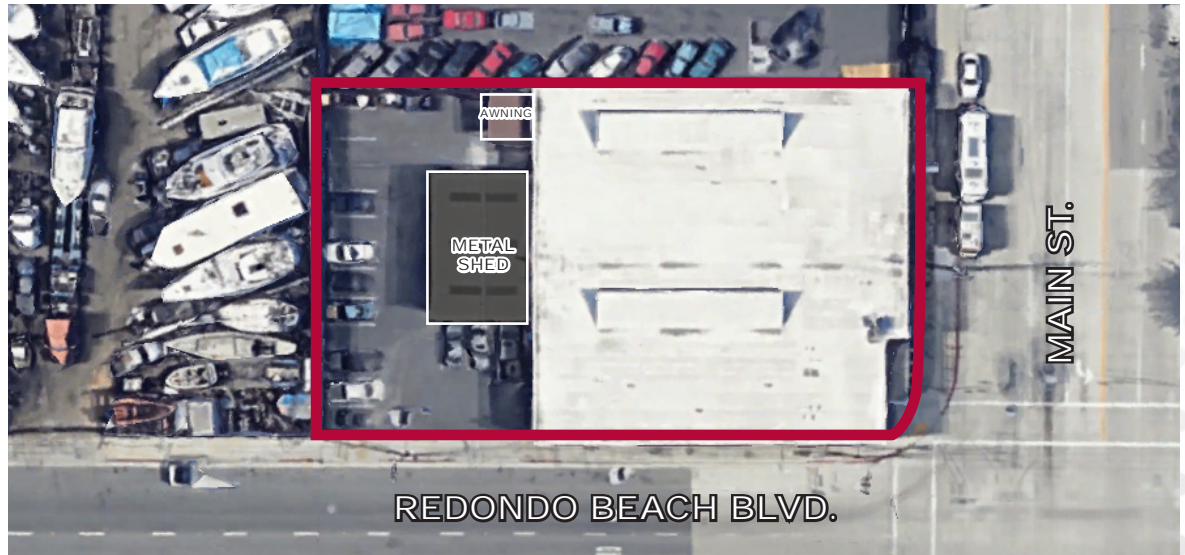
JAMES REYNOLDS

Associate
P: 310.538.6716 | M: 310.406.6581
jreynolds@daumcommercial.com
CA DRE License # 02179891

SUZANNE SULLIVAN

Associate
P: 310.538.6719 | M: 310.721.5832
ssullivan@daumcommercial.com
CA DRE License # 02230120

AVAILABLE FOR LEASE/SALE | 15,500 SF



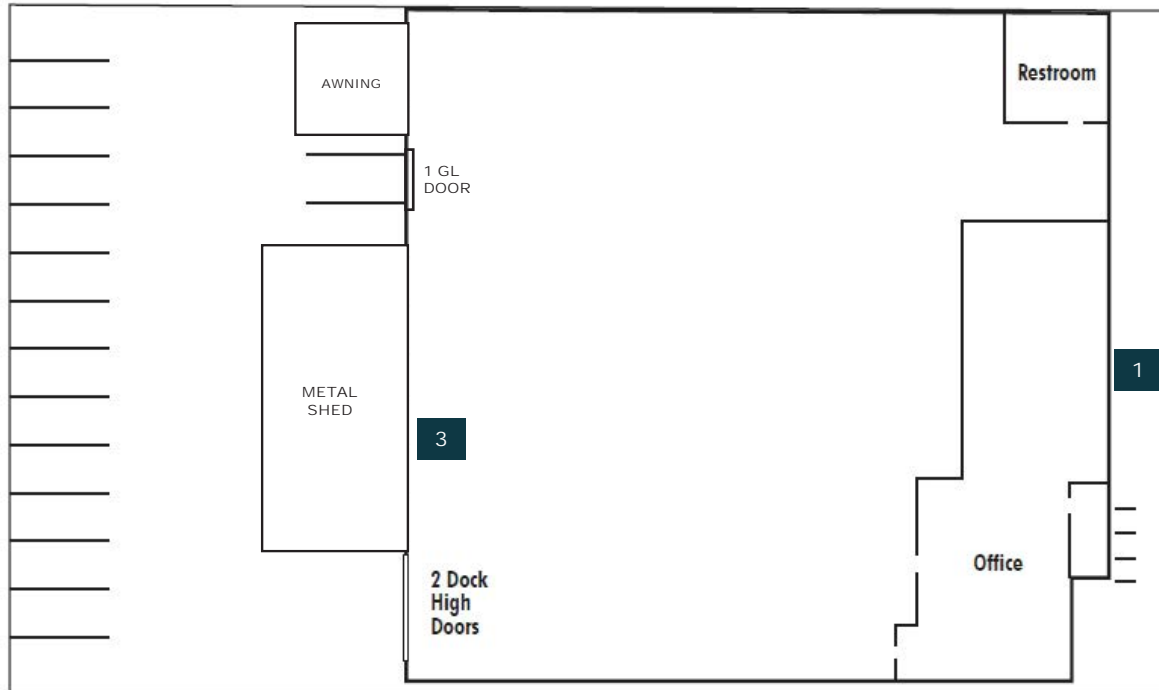
Although all information is furnished regarding for sale, rental or financing is from sources deemed reliable, such information has not been verified and no express representation is made nor is any to be implied as to the accuracy thereof, and it is submitted subject to errors, omissions, changes of price, rental or other conditions, prior sale, lease or financing, or withdrawal without notice. All maps courtesy of Google Maps, Bing, and Google Earth. D/AQ Corp. # 01129558

DAUM
COMMERCIAL REAL ESTATE SERVICES

15225 S. MAIN ST., GARDENA

UNINCORPORATED LOS ANGELES COUNTY|CA

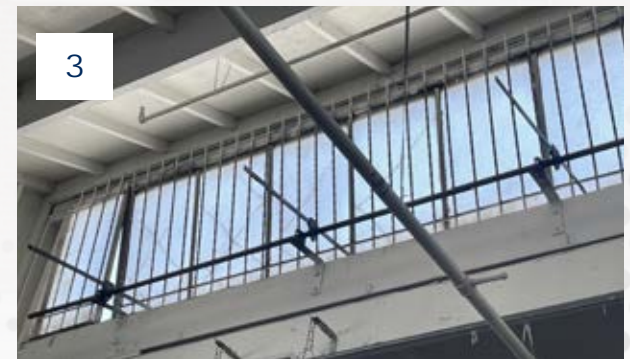
AVAILABLE FOR LEASE/SALE | 15,500 SF



 SITE PLAN NOT TO SCALE

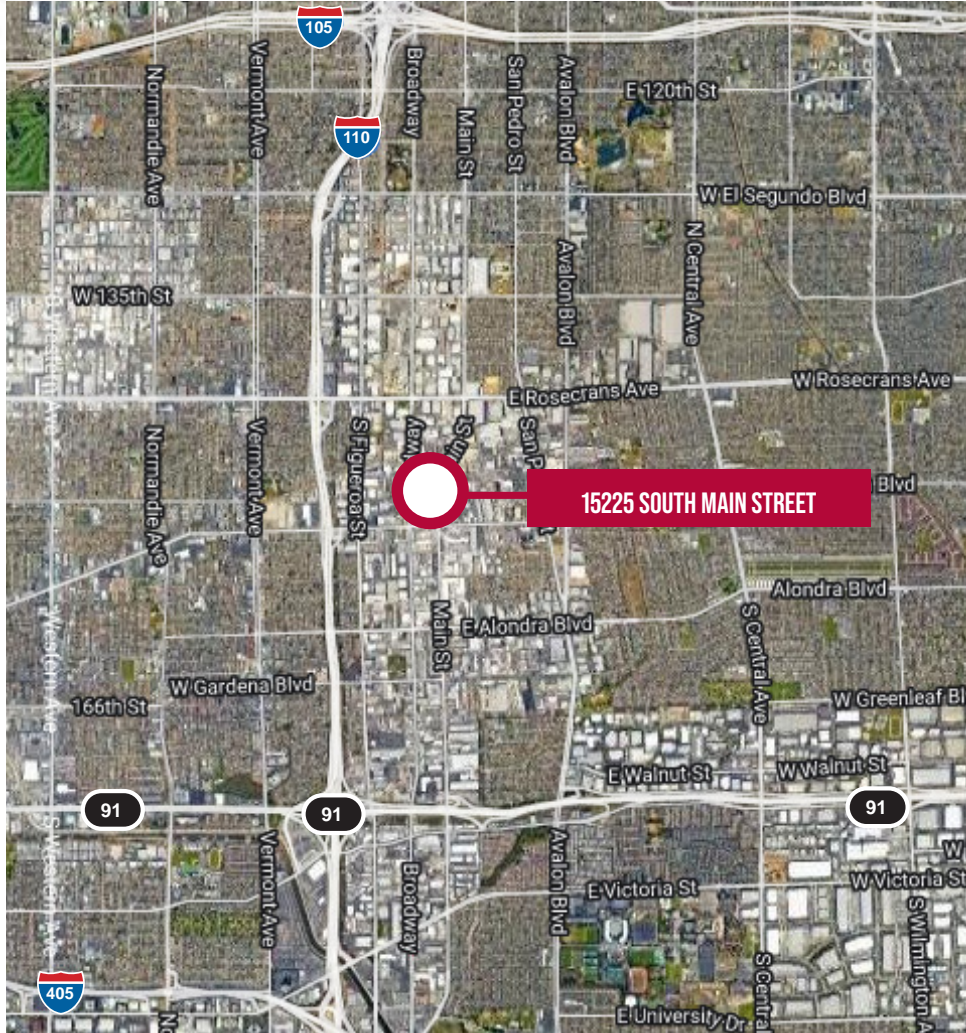
REDONDO BEACH BLVD

MAIN ST

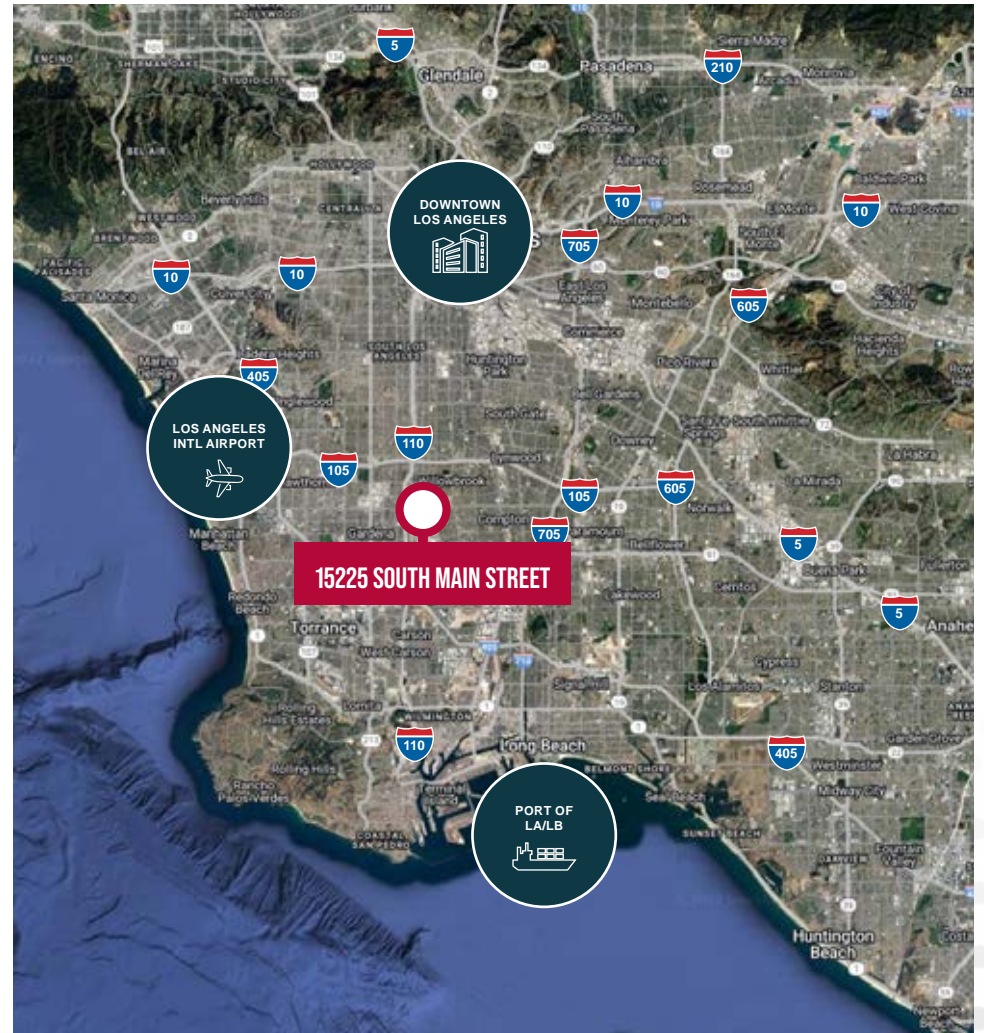


15225 S. MAIN ST., GARDENA

UNINCORPORATED LOS ANGELES COUNTY|CA



AVAILABLE FOR LEASE/SALE | 15,500 SF



Although all information is furnished regarding for sale, rental or financing is from sources deemed reliable, such information has not been verified and no express representation is made nor is any to be implied as to the accuracy thereof, and it is submitted subject to errors, omissions, changes of price, rental or other conditions, prior sale, lease or financing, or withdrawal without notice. All maps courtesy of Google Maps, Bing, and Google Earth. D/AQ Corp. # 01129558



AVAILABLE FOR LEASE/SALE | 15,500 SF
15225 S. MAIN STREET
GARDENA
 UNINCORPORATED LOS ANGELES COUNTY | CA

FOR MORE INFORMATION, CONTACT:

CHUCK BRILL
 Executive Vice President | Principal
 P: 310.538.6710 | M: 310.710.3127
 chuck.brill@daumcommercial.com
 CA DRE License # 00974481

JAMES REYNOLDS
 Associate
 P: 310.538.6716 | M: 310.406.6581
 jreynolds@daumcommercial.com
 CA DRE License # 02179891

SUZANNE SULLIVAN
 Associate
 P: 310.538.6719 | M: 310.721.5832
 ssullivan@daumcommercial.com
 CA DRE License # 02230120

15225 SOUTH MAIN STREET

13 Miles

15 Miles

20 MILES

30 MILES



Although all information is furnished regarding for sale, rental or financing is from sources deemed reliable, such information has not been verified and no express representation is made nor is any to be implied as to the accuracy thereof, and it is submitted subject to errors, omissions, changes of price, rental or other conditions, prior sale, lease or financing, or withdrawal without notice. All maps courtesy of Google Maps, Bing, and Google Earth. D/AQ Corp. # 01129558

