

VAN
ACCESSIBLE
MINIMUM
FINE \$250



26620

VALLEY CENTER DRIVE, SUITE
106
SANTA CLARITA | CA

FOR LEASE

RETAIL SPACE

FOR MORE INFORMATION PLEASE CONTACT:

RONALD BERNDT
SENIOR VICE PRESIDENT

P: 661.670.2000
ron.berndt@daumcommercial.com
CABRE #01045480

KEVIN TAMURA
EXECUTIVE VICE PRESIDENT

P: 661.670.2001
Kevin.Tamura@daumcommercial.com
CABRE #00912212

Although all information is furnished regarding for sale, rental or financing is from sources deemed reliable, such information has not been verified and no express representation is made nor is any to be implied as to the accuracy thereof, and it is submitted subject to errors, omissions, changes of price, rental or other conditions, prior sale, lease or financing, or withdrawal without notice.

DAUM
COMMERCIAL REAL ESTATE SERVICES

FOR LEASE

RETAIL SPACE

26620

VALLEY CENTER DRIVE, SUITE
106
SANTA CLARITA | CA



PROPERTY DESCRIPTION

26620 Valley Center Drive, Suite 106 is a 1,540 square foot Retail/Office suite that is a part of the Valley Business Center located in Santa Clarita, California.

PROPERTY HIGHLIGHTS

- Excellent Retail/Office Space
- Central Valley Location
- Owner to Refurbish Unit
- Rear Loading Door
- Immediate Occupancy
- Below Market Rate

LOCATION DESCRIPTION

26620 Valley Center Drive is a highly street-visible property located off of Valley Center Drive in Santa Clarita, California.

OFFERING SUMMARY

Lease Rate:	\$1.50 SF/month (Gross)
Available SF:	1,540 SF
Building Size:	15,716 SF



RONALD BERNDT
SENIOR VICE PRESIDENT

P: 661.670.2000
ron.berndt@daumcommercial.com
CABRE #01045480

KEVIN TAMURA
EXECUTIVE VICE PRESIDENT

P: 661.670.2001
Kevin.Tamura@daumcommercial.com
CABRE #00912212

FOR LEASE

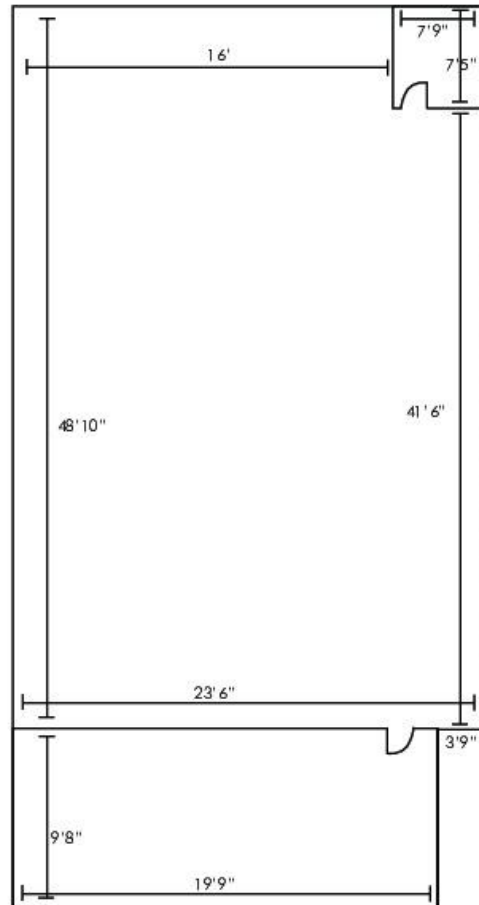
RETAIL SPACE

26620

VALLEY CENTER DRIVE, SUITE
106
SANTA CLARITA | CA

FLOOR PLAN

26620 VALLEY COURT DRIVE | STE 106



06/13/2019

ALL MEASUREMENTS ARE APPROXIMATE AND ARE NOT TO SCALE.*



RONALD BERNDT
SENIOR VICE PRESIDENT

P: 661.670.2000
ron.berndt@daumcommercial.com
CABRE #01045480

KEVIN TAMURA
EXECUTIVE VICE PRESIDENT

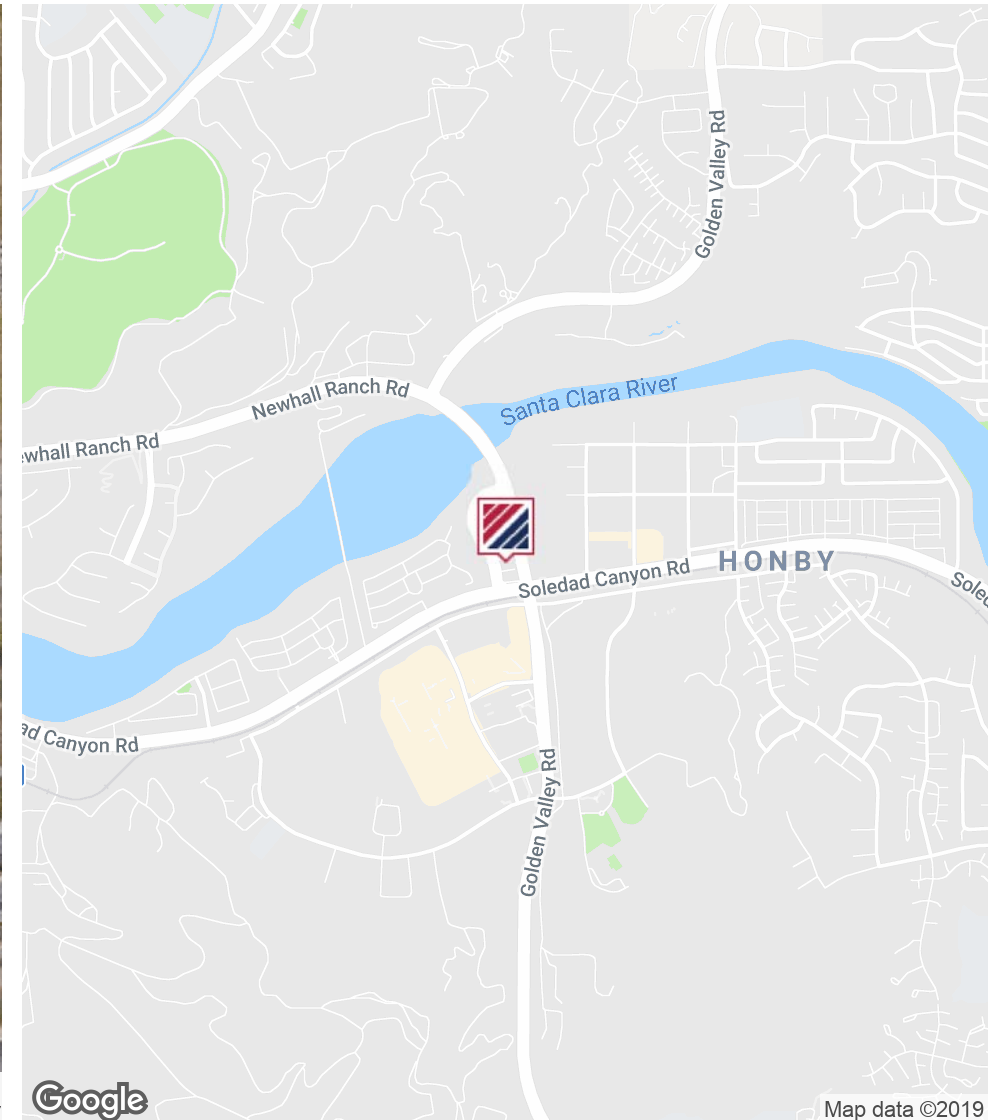
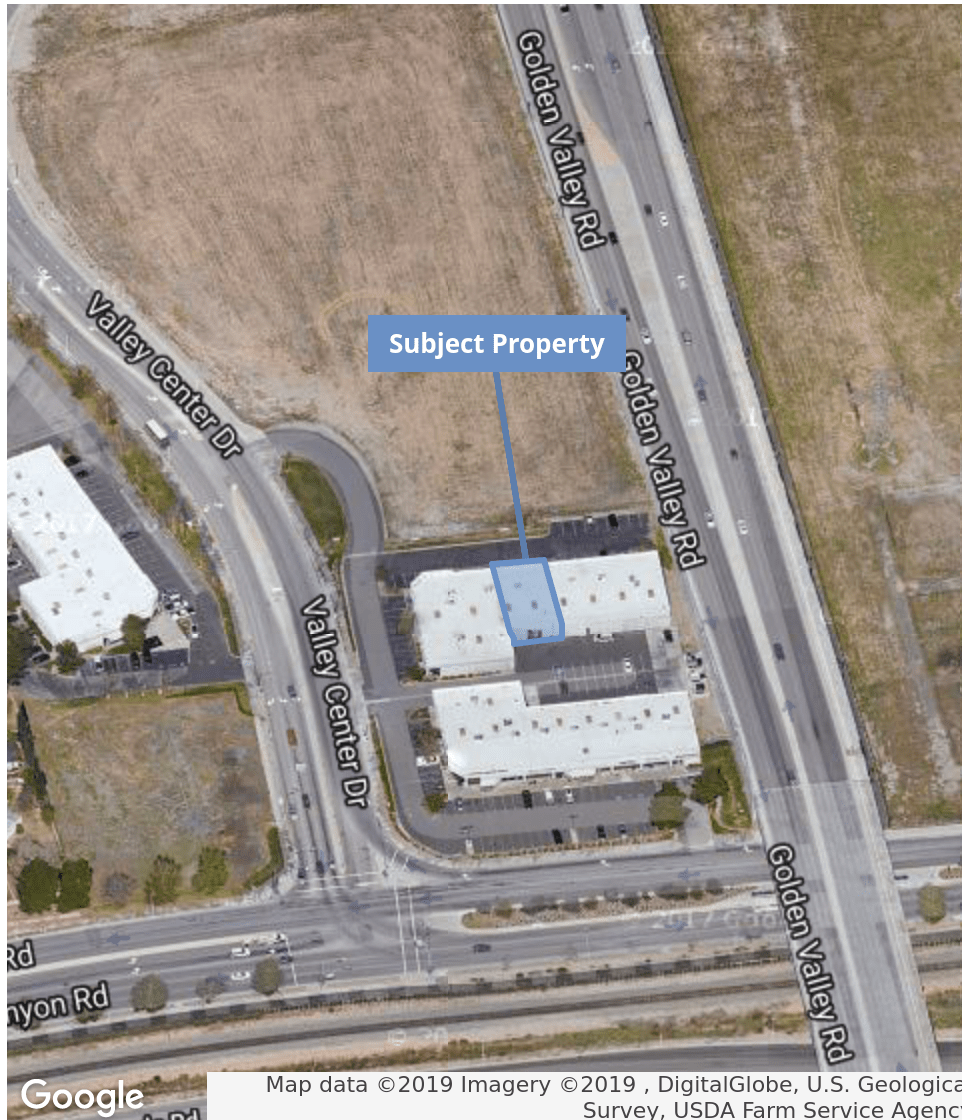
P: 661.670.2001
Kevin.Tamura@daumcommercial.com
CABRE #00912212

FOR LEASE

RETAIL SPACE

26620

VALLEY CENTER DRIVE, SUITE
106
SANTA CLARITA | CA



RONALD BERNDT
SENIOR VICE PRESIDENT

P: 661.670.2000
ron.berndt@daumcommercial.com
CABRE #01045480

KEVIN TAMURA
EXECUTIVE VICE PRESIDENT

P: 661.670.2001
Kevin.Tamura@daumcommercial.com
CABRE #00912212