

LAND

±7.72 ACRES AVAILABLE
46TH STREET
JURUPA VALLEY, CA



PROPERTY FEATURES:

- Single Family Residential Zone
- 3 Lots
 - APN: 181-180-005 .46 Acres
 - APN: 181-180-004 5.26 Acres
 - APN: 181-180-003 1.98 Acres
- Ideal Site For Estate Sized Lots
- Great For Equestrian
- Listing Sale Price:
\$990,000 or
\$128,200/Acre

FOR SALE

RESIDENTIAL ZONE

FOR MORE INFORMATION CONTACT:

LEE SPENCE | EXECUTIVE VICE PRESIDENT
Office: 909.652.9044 | Mobile: 909.969.8800
Email: lee.spence@daumcommercial.com
CA License No. 00954487

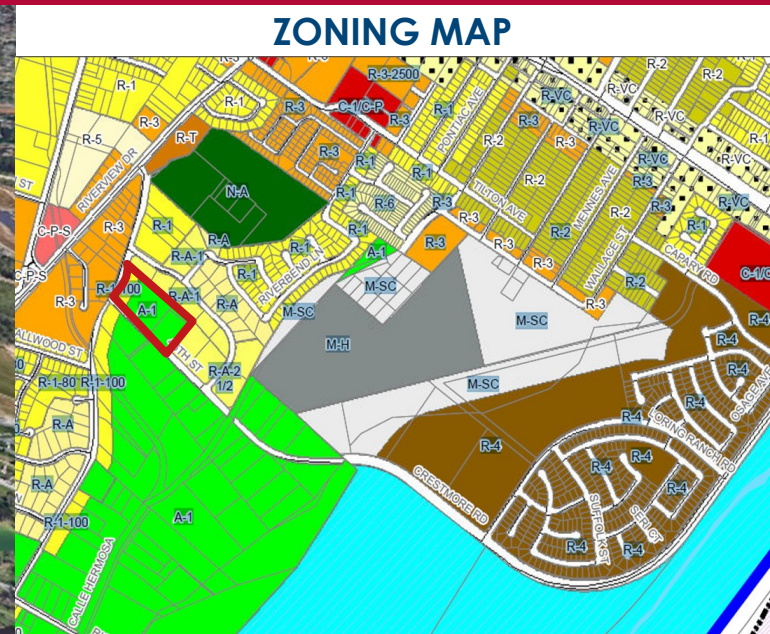
DAUM
COMMERCIAL REAL ESTATE SERVICES

www.daumcommercial.com
ONCOR INTERNATIONAL

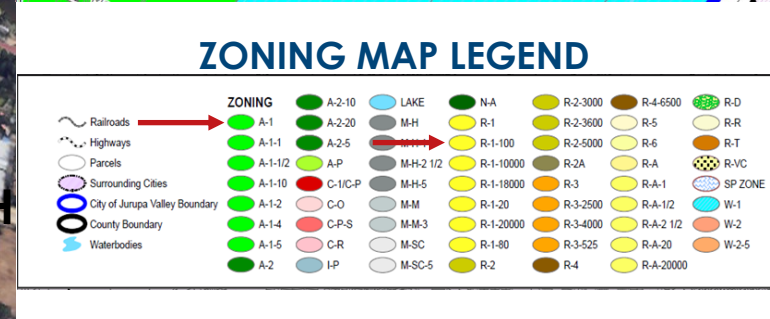
Although all information is furnished regarding for sale, rental or financing is from sources deemed reliable, such information has not been verified and no express representation is made nor is any to be implied as to the accuracy thereof, and it is submitted subject to errors, omissions, changes of price, rental or other conditions, prior sale, lease or financing, or withdrawal without notice.

LAND

±7.72 ACRES AVAILABLE
46TH STREET
 JURUPA VALLEY, CA



ZONING MAP



ZONING MAP LEGEND

FOR SALE

RESIDENTIAL ZONE

FOR MORE INFORMATION CONTACT:

LEE SPENCE | EXECUTIVE VICE PRESIDENT
 Office: 909.652.9044 | Mobile: 909.969.8800
 Email: lee.spence@daumcommercial.com
 CA License No. 00954487



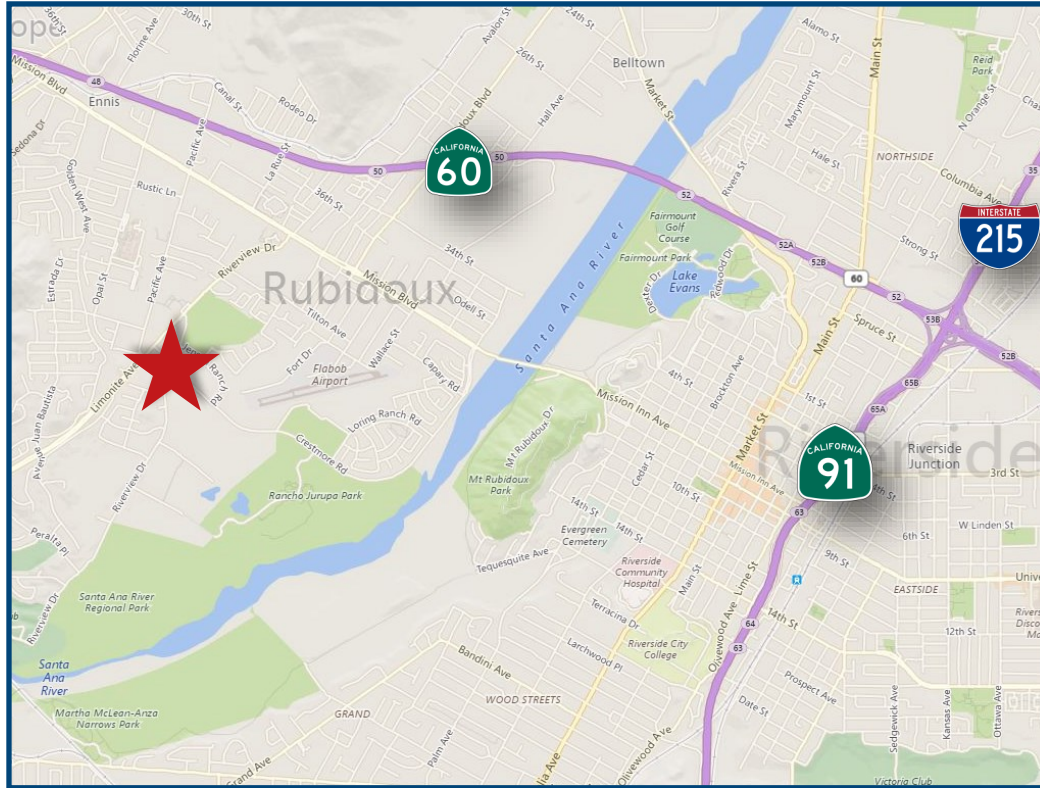
www.daumcommercial.com
 ONCOR INTERNATIONAL

Although all information is furnished regarding for sale, rental or financing is from sources deemed reliable, such information has not been verified and no express representation is made nor is any to be implied as to the accuracy thereof, and it is submitted subject to errors, omissions, changes of price, rental or other conditions, prior sale, lease or financing, or withdrawal without notice.

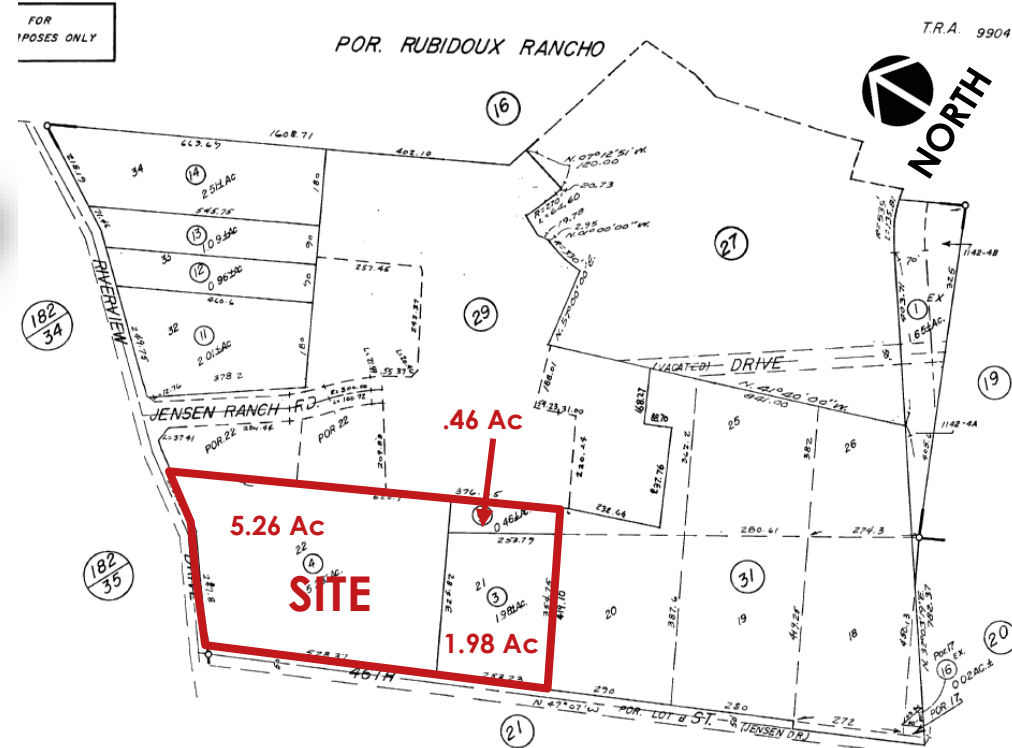
LAND

±7.72 ACRES AVAILABLE
46TH STREET
JURUPA VALLEY, CA

SITE MAP



ASSESSORS PARCEL MAP



FOR SALE

RESIDENTIAL ZONE

FOR MORE INFORMATION CONTACT:

LEE SPENCE | EXECUTIVE VICE PRESIDENT
Office: 909.652.9044 | Mobile: 909.969.8800
Email: lee.spence@daumcommercial.com
CA License No. 00954487

DAUM
COMMERCIAL REAL ESTATE SERVICES

www.daumcommercial.com
ONCOR INTERNATIONAL

Although all information is furnished regarding for sale, rental or financing is from sources deemed reliable, such information has not been verified and no express representation is made nor is any to be implied as to the accuracy thereof, and it is submitted subject to errors, omissions, changes of price, rental or other conditions, prior sale, lease or financing, or withdrawal without notice.