

CHINO INDUSTRIAL CENTER

16003 EUCLID AVE. | CHINO, CA

 AVAILABLE
3Q 2022 | BLDG. 1

UNDER CONSTRUCTION
www.chinoindustrialcenter.com



FOR LEASE ±206,118 SF

FOR MORE INFORMATION, CONTACT:

KEN ANDERSEN, CCIM, SIOR
FIRST VICE PRESIDENT
O: 909.912.0002 | C: 949.350.3933
KEN.ANDERSEN@DAUMCOMMERCIAL.COM
CA DRE: 00902084

ERIC FIKSE | SIOR
EXECUTIVE VICE PRESIDENT
P: 909.652.9056 | F: 909.652.9076
ERIC.FIKSE@DAUMCOMMERCIAL.COM
CA DRE #01457380

RICHARD C. JOHN | SIOR
EXECUTIVE VICE PRESIDENT
P: 909.912.0001 | M: 949.378.4661
RJ@DAUMCOMMERCIAL.COM
CA DRE #00800783

D/AQ Corp. #01129558. Maps Courtesy ©Google & ©Microsoft. Although all information is furnished regarding for sale, rental or financing is from sources deemed reliable, such information has not been verified and no express representation is made nor is any to be implied as to the accuracy thereof, and it is submitted subject to errors, omissions, changes of price, rental or other conditions, prior sale, lease or financing, or withdrawal without notice.



ALERE
PROPERTY GROUP LLC



DAUM
COMMERCIAL REAL ESTATE SERVICES

CHINO INDUSTRIAL CENTER

16003 EUCLID AVE. | CHINO, CA



AVAILABLE
3Q 2022

BLDG. 1

PROPERTY HIGHLIGHTS

206,118 SF
Concrete Tilt Up
Industrial

405,510 SF /
9.31 Acres
of Land

4,033 SF
of Office Space

ESFR
Sprinkler System

36'
Clearance

23
Dock High
Doors

2
GL Doors

60'x50'
Typical Bay
Spacing

2,000 AMP
SERVICE
277/480
Power

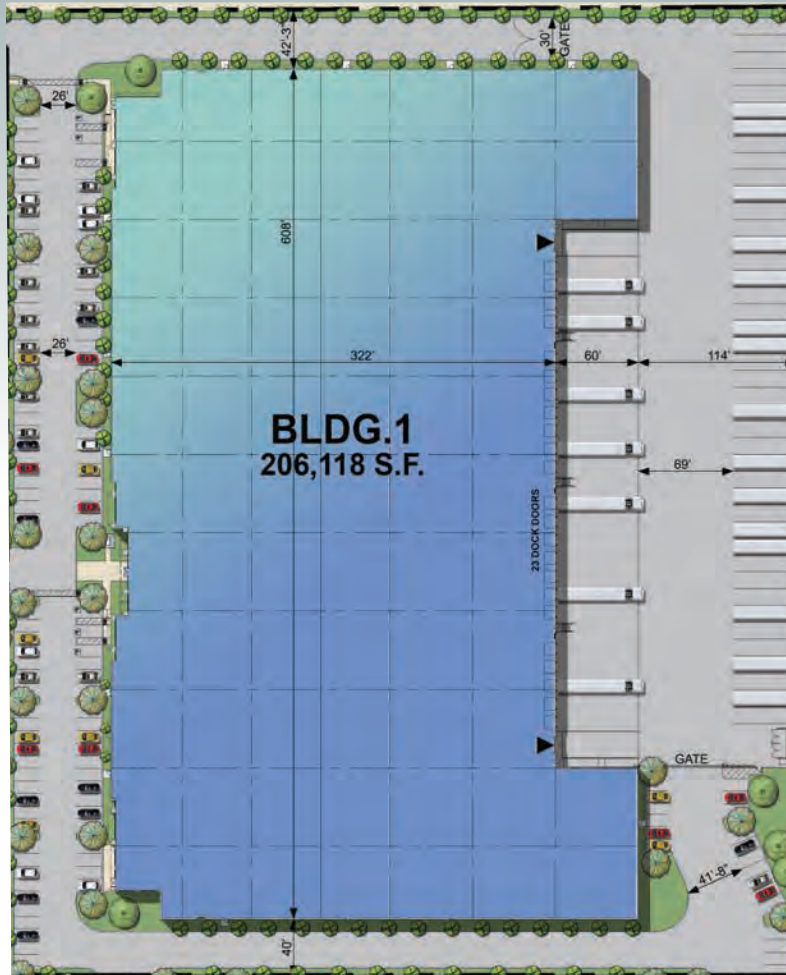
Expandable to
4,000 AMPS

Scrim Foil
Ceiling

3%
Skylights

122
Car Parking Spots

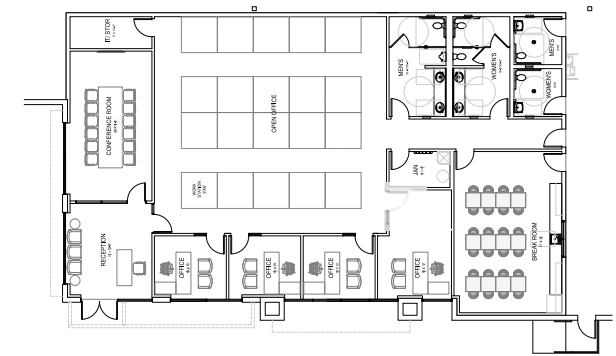
Access to
71, 60, 91, 15 and
57 Freeways



BUILDING 1



SITE PLAN



OFFICE PLAN



ALERE
PROPERTY GROUP LLC

DAUM
COMMERCIAL REAL ESTATE SERVICES

CHINO INDUSTRIAL CENTER

16003 EUCLID AVE. | CHINO, CA

 AVAILABLE 3Q 2022 | BLDG. 1



Google

D/AQ Corp. #01129558. Maps Courtesy ©Google & ©Microsoft. Although all information is furnished regarding for sale, rental or financing is from sources deemed reliable, such information has not been verified and no express representation is made nor is any to be implied as to the accuracy thereof, and it is submitted subject to errors, omissions, changes of price, rental or other conditions, prior sale, lease or financing, or withdrawal without notice.



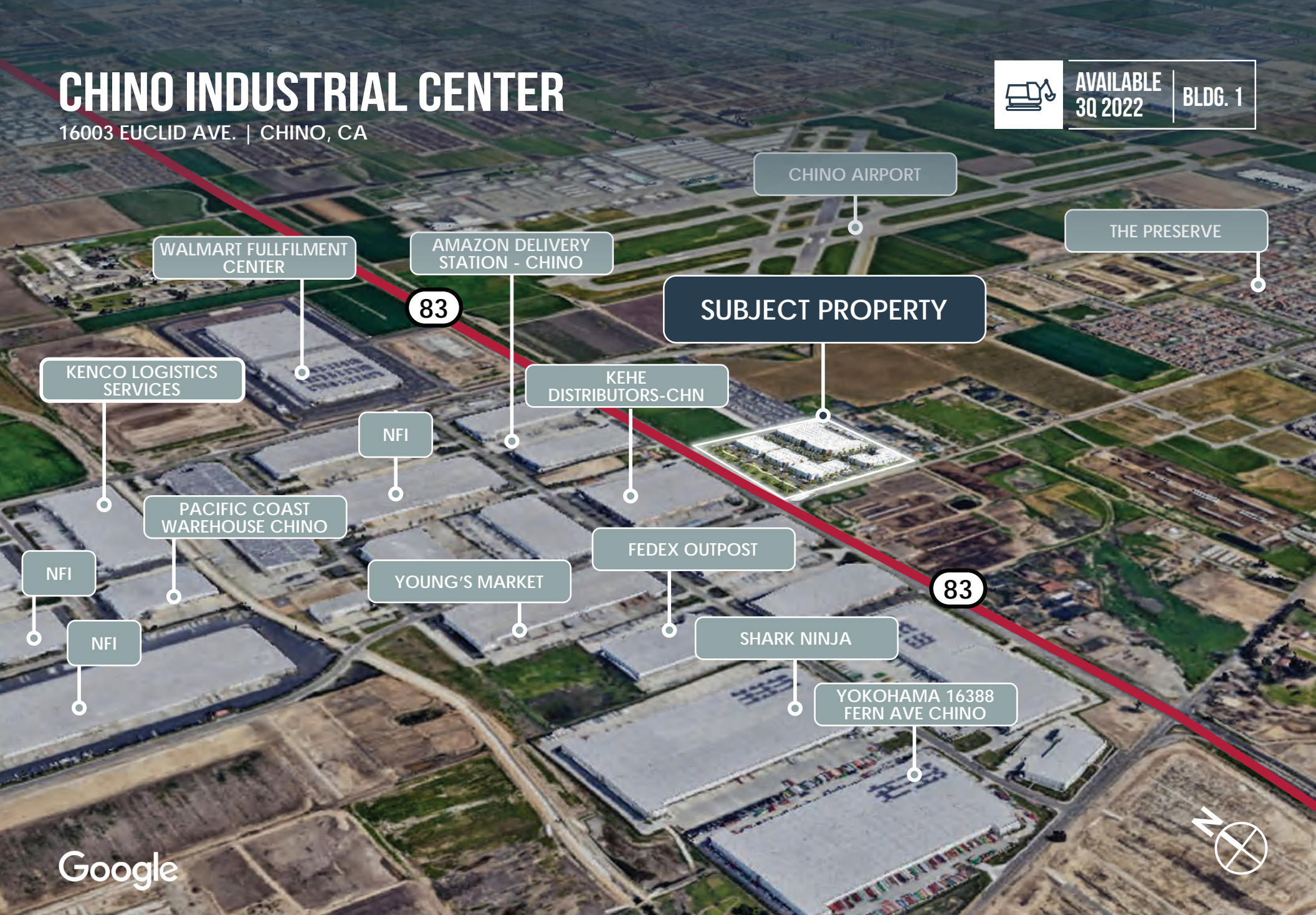
ALERE
PROPERTY GROUP LLC

DAUM
COMMERCIAL REAL ESTATE SERVICES

CHINO INDUSTRIAL CENTER

16003 EUCLID AVE. | CHINO, CA

 AVAILABLE 3Q 2022 | BLDG. 1



CHINO AIRPORT

THE PRESERVE

WALMART FULLFILMENT CENTER

AMAZON DELIVERY STATION - CHINO

SUBJECT PROPERTY

83

KENCO LOGISTICS SERVICES

KEHE DISTRIBUTORS-CHN

NFI

PACIFIC COAST WAREHOUSE CHINO

FEDEX OUTPOST

NFI

YOUNG'S MARKET

83

NFI

SHARK NINJA

YOKOHAMA 16388 FERN AVE CHINO

Google



D/AQ Corp. #01129558. Maps Courtesy ©Google & ©Microsoft. Although all information is furnished regarding for sale, rental or financing is from sources deemed reliable, such information has not been verified and no express representation is made nor is any to be implied as to the accuracy thereof, and it is submitted subject to errors, omissions, changes of price, rental or other conditions, prior sale, lease or financing, or withdrawal without notice.



ALERE
PROPERTY GROUP LLC



DAUM
COMMERCIAL REAL ESTATE SERVICES

CHINO INDUSTRIAL CENTER

16003 EUCLID AVE. | CHINO, CA



AVAILABLE
3Q 2022

BLDG. 1



D/AQ Corp. #01129558. Maps Courtesy ©Google & ©Microsoft. Although all information is furnished regarding for sale, rental or financing is from sources deemed reliable, such information has not been verified and no express representation is made nor is any to be implied as to the accuracy thereof, and it is submitted subject to errors, omissions, changes of price, rental or other conditions, prior sale, lease or financing, or withdrawal without notice.



ALERE
PROPERTY GROUP LLC

DAUM
COMMERCIAL REAL ESTATE SERVICES

CHINO INDUSTRIAL CENTER

16003 EUCLID AVE. | CHINO, CA



AVAILABLE
3Q 2022

BLDG. 1



D/AQ Corp. #01129558. Maps Courtesy ©Google & ©Microsoft. Although all information is furnished regarding for sale, rental or financing is from sources deemed reliable, such information has not been verified and no express representation is made nor is any to be implied as to the accuracy thereof, and it is submitted subject to errors, omissions, changes of price, rental or other conditions, prior sale, lease or financing, or withdrawal without notice.



ALERE
PROPERTY GROUP LLC

DAUM
COMMERCIAL REAL ESTATE SERVICES