

# CHINO INDUSTRIAL CENTER

7116 BICKMORE AVE. ■ 16067 EUCLID AVE. | CHINO, CA



AVAILABLE  
3Q 2022

BLDGS.  
3-4

UNDER CONSTRUCTION

[www.chinoindustrialcenter.com](http://www.chinoindustrialcenter.com)



7116 BICKMORE AVE.

16067 EUCLID AVE.

**FOR LEASE ±33,444 SF**  
DIVISIBLE TO ±20,394 SF AND ±13,050 SF

FOR MORE INFORMATION, CONTACT:

KEN ANDERSEN, CCIM, SIOR  
FIRST VICE PRESIDENT  
O: 909.912.0002 | C: 949.350.3933  
KEN.ANDERSEN@DAUMCOMMERCIAL.COM  
CA DRE: 00902084

ERIC FIKSE | SIOR  
EXECUTIVE VICE PRESIDENT  
P: 909.652.9056 | F: 909.652.9076  
ERIC.FIKSE@DAUMCOMMERCIAL.COM  
CA DRE #01457380

RICHARD C. JOHN | SIOR  
EXECUTIVE VICE PRESIDENT  
P: 909.912.0001 | M: 949.378.4661  
RJ@DAUMCOMMERCIAL.COM  
CA DRE #00800783

D/AQ Corp. #01129558. Maps Courtesy ©Google & ©Microsoft. Although all information is furnished regarding for sale, rental or financing is from sources deemed reliable, such information has not been verified and no express representation is made nor is any to be implied as to the accuracy thereof, and it is submitted subject to errors, omissions, changes of price, rental or other conditions, prior sale, lease or financing, or withdrawal without notice.



**ALERE**  
PROPERTY GROUP LLC

**DAUM**  
COMMERCIAL REAL ESTATE SERVICES

# CHINO INDUSTRIAL CENTER

7166 BICKMORE AVE. ■ 16067 EUCLID AVE. | CHINO, CA



AVAILABLE 3Q 2022	BLDGS. 3-4
----------------------	---------------

BUILDING SPECIFICATIONS			
	Bldgs. 3 & 4	Bldg 3	Bldg 4
<b>Addresses</b>	7166 Bickmore Ave. 16067 Euclid Ave.	7166 Bickmore Ave.	16067 Euclid Ave.
<b>Site Area</b>	3.16 AC	1.92 AC	1.24 AC
<b>Total Building Area (SF)</b>	33,444	13,050	20,394
<b>Spec Office (SF)</b>	4,106	2,053	2,053
<b>Bay Spacing</b>	60'x52'	60'x52'	60'x52'
<b>Provided Car Parking</b>	52	24	28
<b>Dock Positions</b>	0	0	0
<b>Drive-in Door</b>	4	2	2
<b>Clear Height</b>	26'	26'	26'
<b>Service</b>	2 - 400A Services 277/480 Expandable to 800A	400A Service 277/480 Expandable to 800A	400A Service 277/480 Expandable to 800A
<b>Sprinkler Density</b>	ESFR	ESFR	ESFR



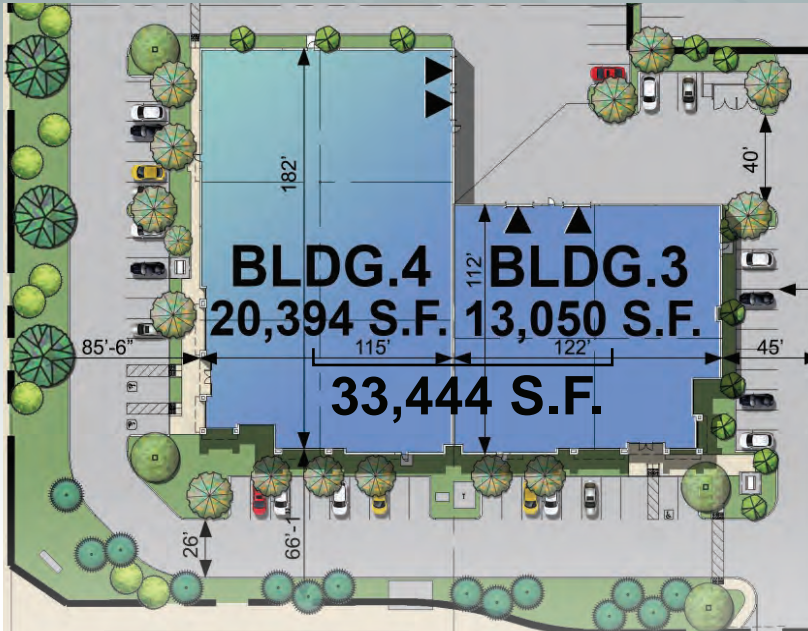
# CHINO INDUSTRIAL CENTER

7166 BICKMORE AVE. ■ 16067 EUCLID AVE. | CHINO, CA

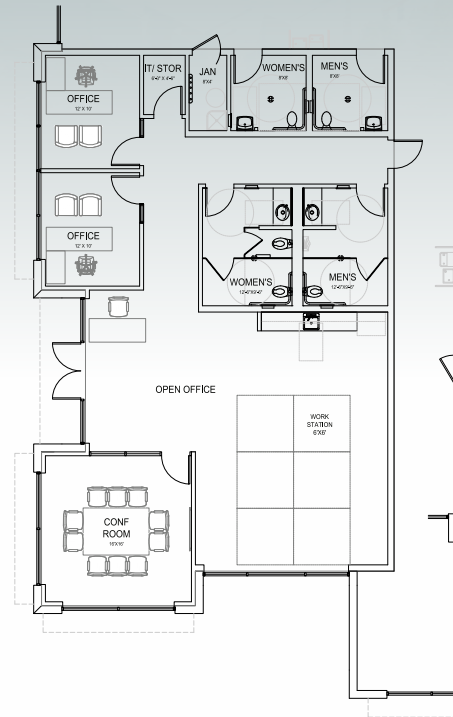


AVAILABLE  
3Q 2022

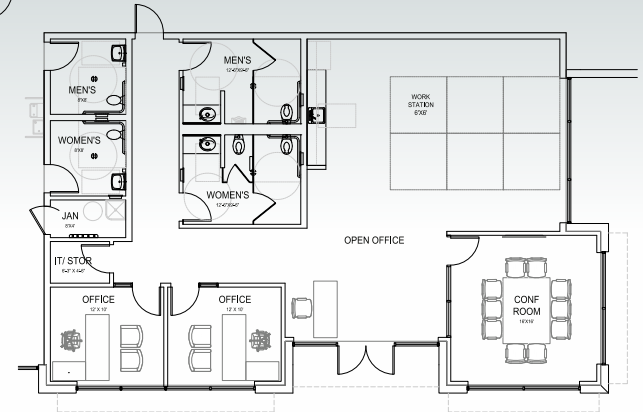
BLDG.  
3-4



BUILDINGS 3-4  
COMBINED 33,444 SF



FLOOR PLAN | BLDG 4



FLOOR PLAN | BLDG 3



**ALERE**  
PROPERTY GROUP LLC



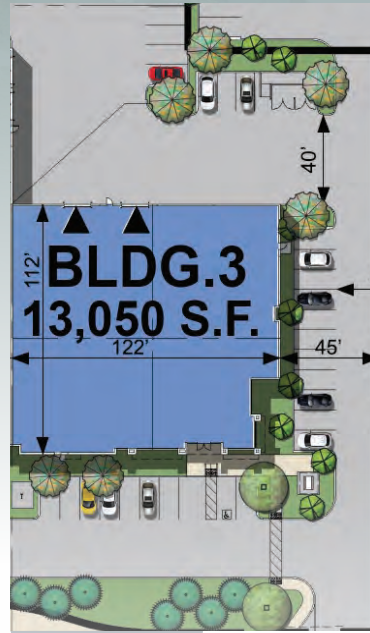
# CHINO INDUSTRIAL CENTER

7166 BICKMORE AVE. ■ 16067 EUCLID AVE. | CHINO, CA

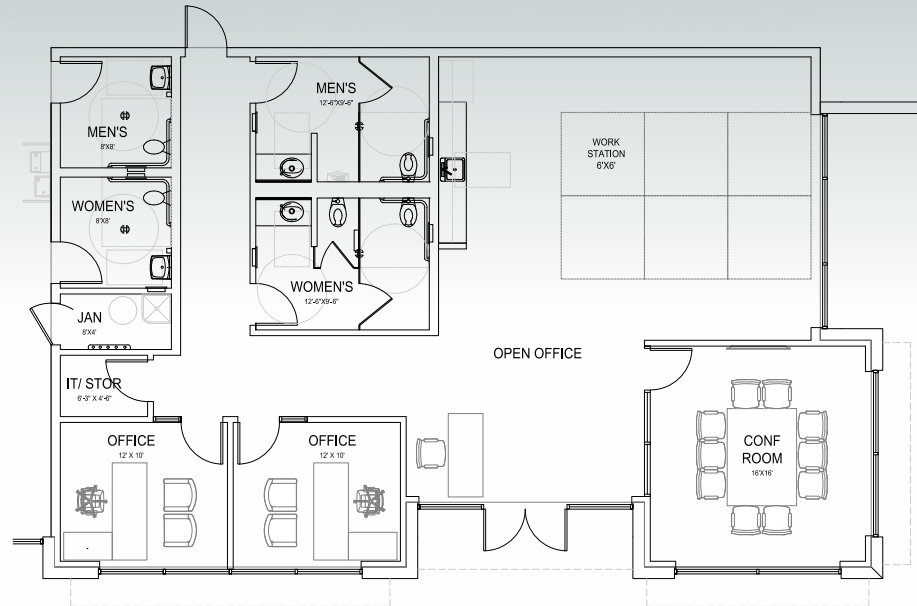


AVAILABLE  
3Q 2022

BLDGS.  
3-4



BUILDING 3



FLOOR PLAN | BLDG 3



ALERE  
PROPERTY GROUP LLC

DAUM  
COMMERCIAL REAL ESTATE SERVICES

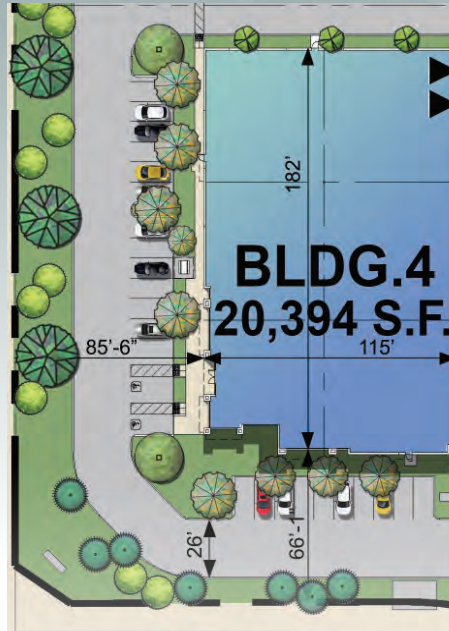
# CHINO INDUSTRIAL CENTER

7166 BICKMORE AVE. ■ 16067 EUCLID AVE. | CHINO, CA

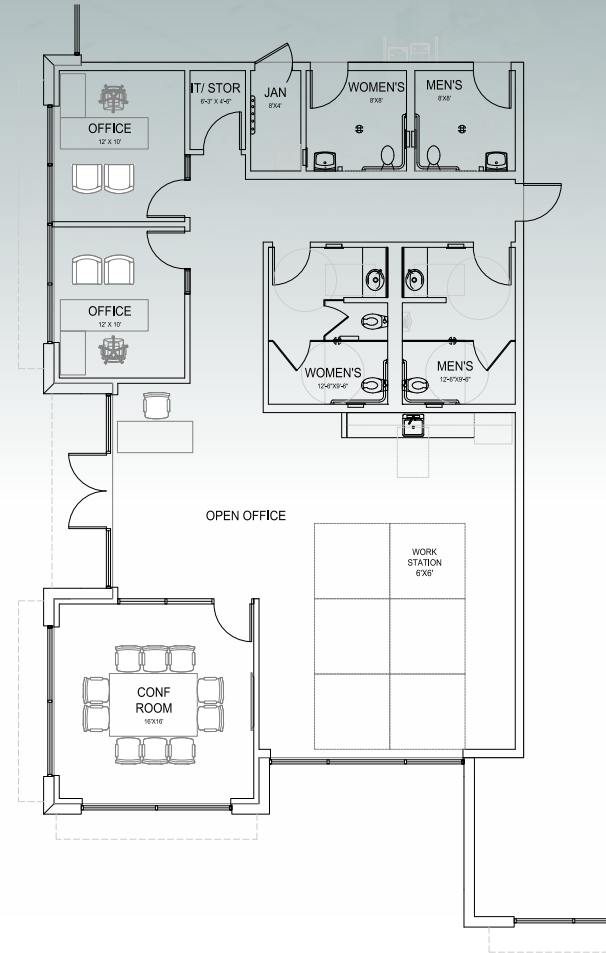


AVAILABLE  
3Q 2022

BLDG.  
3-4



BUILDING 4



FLOOR PLAN | BLDG 4



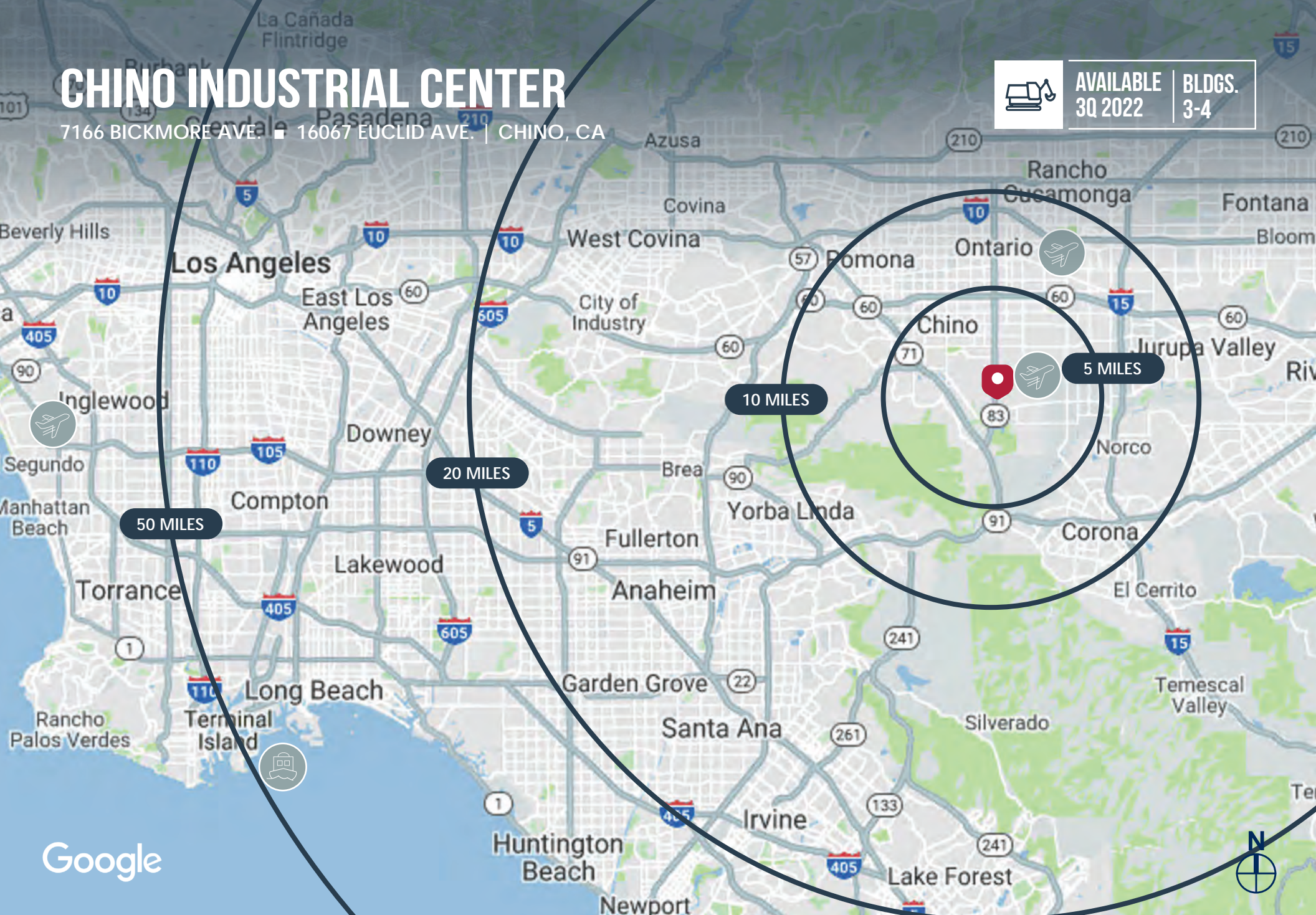
**ALERE**  
PROPERTY GROUP LLC



# CHINO INDUSTRIAL CENTER

7166 BICKMORE AVE. | 16067 EUCLID AVE. | CHINO, CA

 AVAILABLE 3Q 2022 | BLDGS. 3-4



Google

D/AQ Corp. #01129558. Maps Courtesy ©Google & ©Microsoft. Although all information is furnished regarding for sale, rental or financing is from sources deemed reliable, such information has not been verified and no express representation is made nor is any to be implied as to the accuracy thereof, and it is submitted subject to errors, omissions, changes of price, rental or other conditions, prior sale, lease or financing, or withdrawal without notice.



**ALERE**  
PROPERTY GROUP LLC

**DAUM**  
COMMERCIAL REAL ESTATE SERVICES

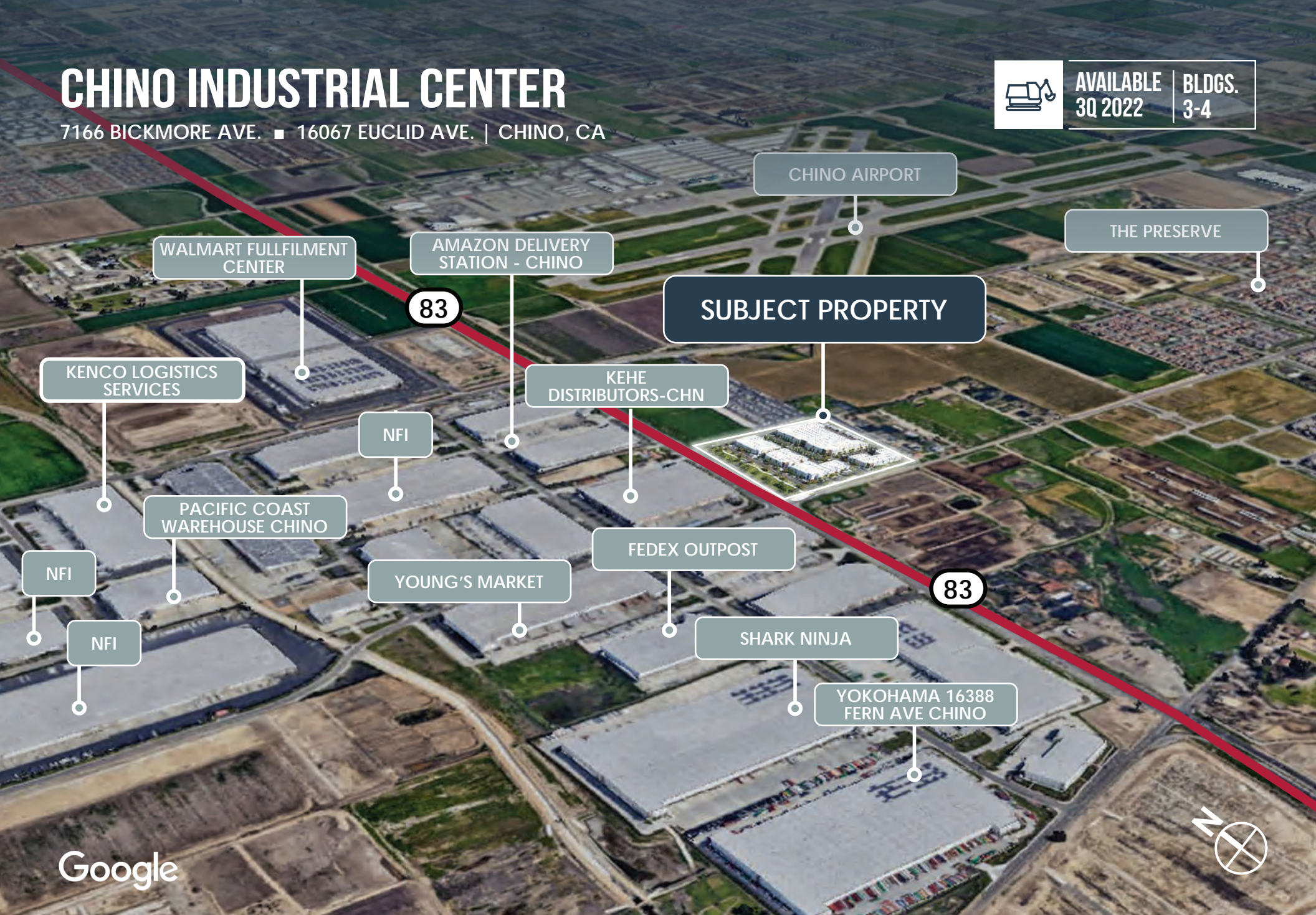
# CHINO INDUSTRIAL CENTER

7166 BICKMORE AVE. ■ 16067 EUCLID AVE. | CHINO, CA



AVAILABLE  
3Q 2022

BLDGS.  
3-4



CHINO AIRPORT

THE PRESERVE

WALMART FULLFILMENT CENTER

AMAZON DELIVERY STATION - CHINO

SUBJECT PROPERTY

83

KENCO LOGISTICS SERVICES

KEHE DISTRIBUTORS-CHN

NFI

PACIFIC COAST WAREHOUSE CHINO

FEDEX OUTPOST

NFI

YOUNG'S MARKET

83

NFI

SHARK NINJA

YOKOHAMA 16388 FERN AVE CHINO

Google



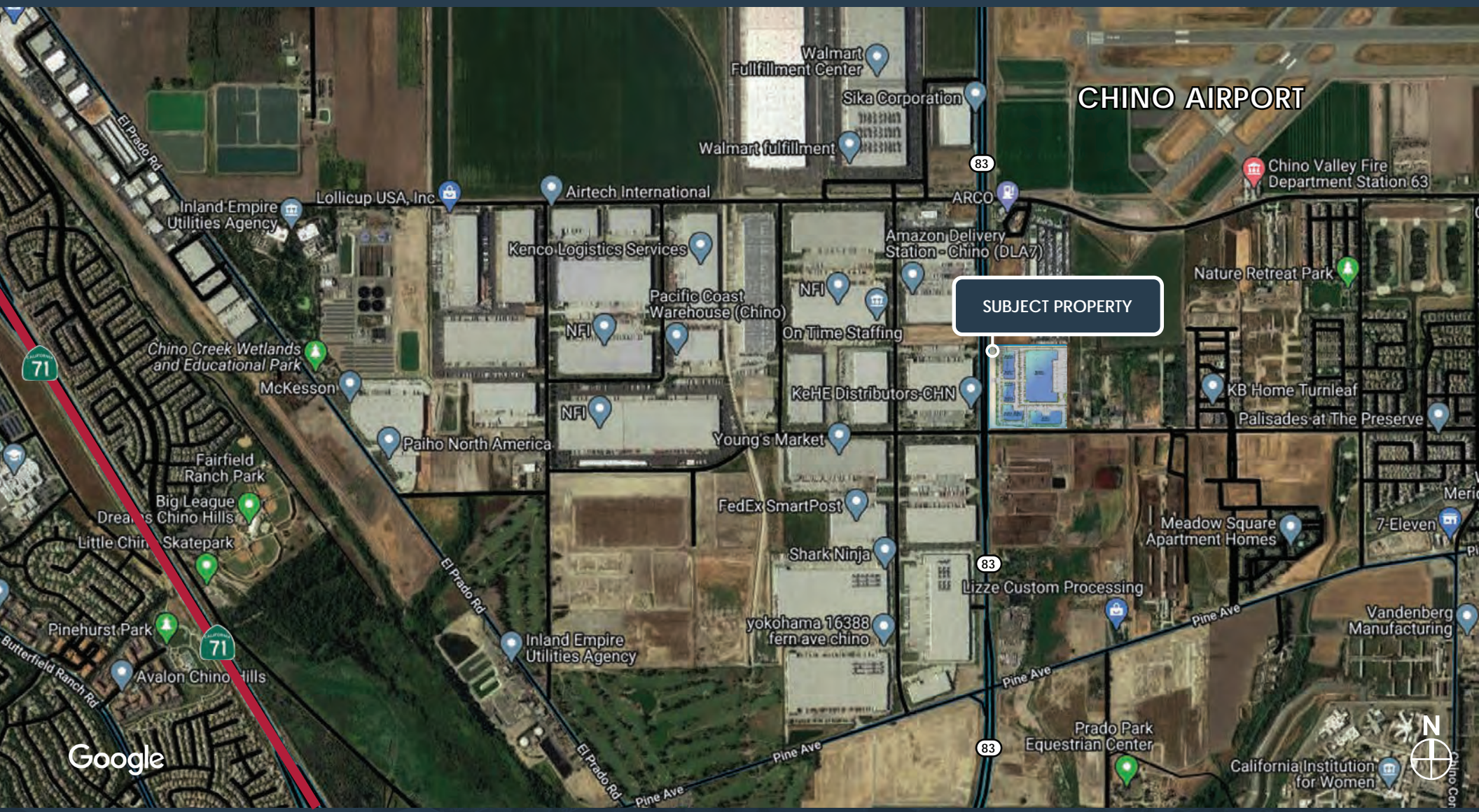
ALERE  
PROPERTY GROUP LLC

DAUM  
COMMERCIAL REAL ESTATE SERVICES

# CHINO INDUSTRIAL CENTER

7166 BICKMORE AVE. ■ 16067 EUCLID AVE. | CHINO, CA

 AVAILABLE 3Q 2022 | BLDGS. 3-4



D/AQ Corp. #01129558. Maps Courtesy ©Google & ©Microsoft. Although all information is furnished regarding for sale, rental or financing is from sources deemed reliable, such information has not been verified and no express representation is made nor is any to be implied as to the accuracy thereof, and it is submitted subject to errors, omissions, changes of price, rental or other conditions, prior sale, lease or financing, or withdrawal without notice.



**ALERE**  
PROPERTY GROUP LLC





# CHINO INDUSTRIAL CENTER

7166 BICKMORE AVE. ■ 16067 EUCLID AVE. | CHINO, CA

	AVAILABLE 3Q 2022	BLDGS. 3-4
---	----------------------	---------------



D/AQ Corp. #01129558. Maps Courtesy ©Google & ©Microsoft. Although all information is furnished regarding for sale, rental or financing is from sources deemed reliable, such information has not been verified and no express representation is made nor is any to be implied as to the accuracy thereof, and it is submitted subject to errors, omissions, changes of price, rental or other conditions, prior sale, lease or financing, or withdrawal without notice.



**ALERE**  
PROPERTY GROUP LLC

**DAUM**  
COMMERCIAL REAL ESTATE SERVICES