

CHINO INDUSTRIAL CENTER

- 7116 BICKMORE AVE. ■ 16067 EUCLID AVE. ■ 16041 EUCLID AVE.
- 10621 EUCLID AVE. ■ 15995 EUCLID AVE. ■ 15969 EUCLID AVE.

 AVAILABLE 4Q 2022 | BLDGS. 3-8

UNDER CONSTRUCTION
www.chinoindustrialcenter.com



FOR LEASE
SIX BLDGS. FROM: ±13,050 TO 21,843 SF

FOR MORE INFORMATION, CONTACT:

KEN ANDERSEN, CCIM, SIOR
EXECUTIVE VICE PRESIDENT
O: 909.912.0002 | C: 949.350.3933
KEN.ANDERSEN@DAUMCOMMERCIAL.COM
CA DRE: 00902084

ERIC FIKSE | SIOR
EXECUTIVE VICE PRESIDENT
P: 909.652.9056 | F: 909.652.9076
ERIC.FIKSE@DAUMCOMMERCIAL.COM
CA DRE #01457380

RICHARD C. JOHN | SIOR
EXECUTIVE VICE PRESIDENT
P: 909.912.0001 | M: 949.378.4661
RJ@DAUMCOMMERCIAL.COM
CA DRE #00800783

D/AQ Corp. #01129558. Maps Courtesy ©Google & ©Microsoft. Although all information is furnished regarding for sale, rental or financing is from sources deemed reliable, such information has not been verified and no express representation is made nor is any to be implied as to the accuracy thereof, and it is submitted subject to errors, omissions, changes of price, rental or other conditions, prior sale, lease or financing, or withdrawal without notice.



ALERE
PROPERTY GROUP LLC

DAUM
COMMERCIAL REAL ESTATE SERVICES

CHINO INDUSTRIAL CENTER

- 7116 BICKMORE AVE. ■ 16067 EUCLID AVE. ■ 16041 EUCLID AVE.
- 10621 EUCLID AVE. ■ 15995 EUCLID AVE. ■ 15969 EUCLID AVE.



AVAILABLE 4Q 2022	BLDGS. 3-8
----------------------	---------------

BUILDING SPECIFICATIONS						
	Bldg 3	Bldg 4	Bldg 5	Bldg 6	Bldg 7	Bldg 8
Addresses	7116 Bickmore Ave.	16067 Euclid Ave.	16041 Euclid Ave.	10621 Euclid Ave.	15995 Euclid Ave.	15969 Euclid Ave.
Site Area	1.92 AC	1.24 AC	.83 AC	.91 AC	1.17 AC	1.23 AC
Total Building Area (SF)	13,050	20,394	14,454	15,834	21,293	21,843
Spec Office (SF)	2,053	2,053	2,038	2,038	1,995	1,995
Bay Spacing	60'x52'	60'x52'	60'x52'	60'x52'	60'x52'	60'x52'
Provided Car Parking	24	28	21	22	27	30
Dock Positions	0	0	2	2	2	2
Drive-in Door	2	2	1	1	1	1
Clear Height	26'	26'	26'	26'	26'	26'
Service	400A Service 277/480 Expandable to 800A	400A Service 277/480 Expandable to 800A	400A Service 277/480 Expandable to 800A	400A Service 277/480 Expandable to 800A	400A Service 277/480 Expandable to 800A	400A Service 277/480 Expandable to 800A
Sprinkler Density	ESFR	ESFR	ESFR	ESFR	ESFR	ESFR

CHINO INDUSTRIAL CENTER

- 7116 BICKMORE AVE. ■ 16067 EUCLID AVE. ■ 16041 EUCLID AVE.
- 10621 EUCLID AVE. ■ 15995 EUCLID AVE. ■ 15969 EUCLID AVE.

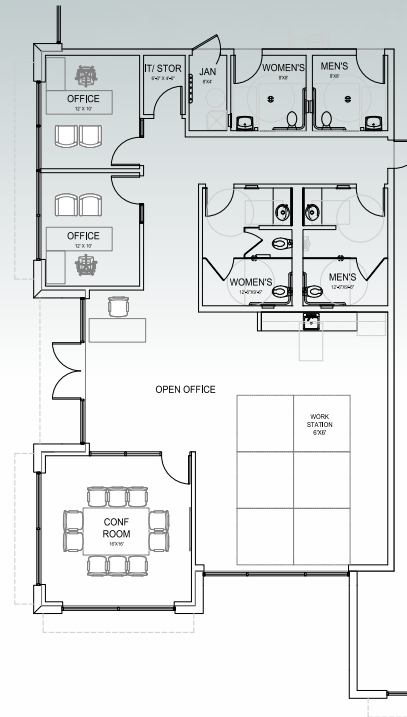


AVAILABLE
4Q 2022

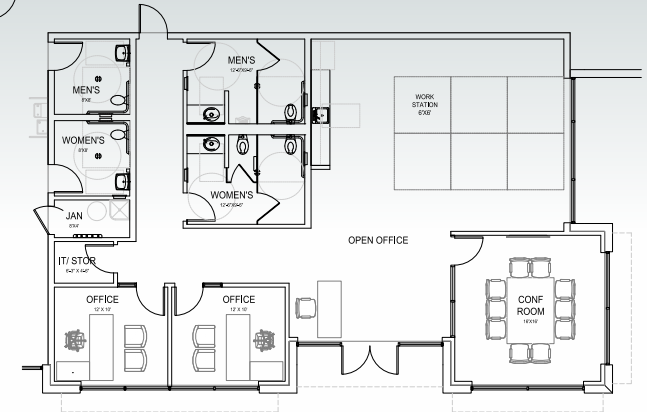
BLDG.
3-8



BUILDINGS 3-4



FLOOR PLAN | BLDG 4



FLOOR PLAN | BLDG 3

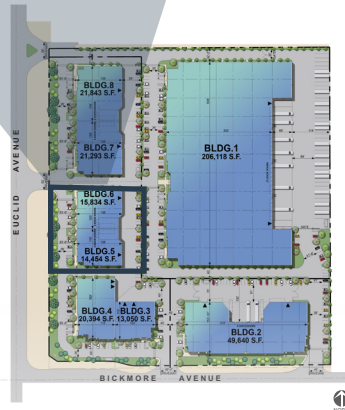
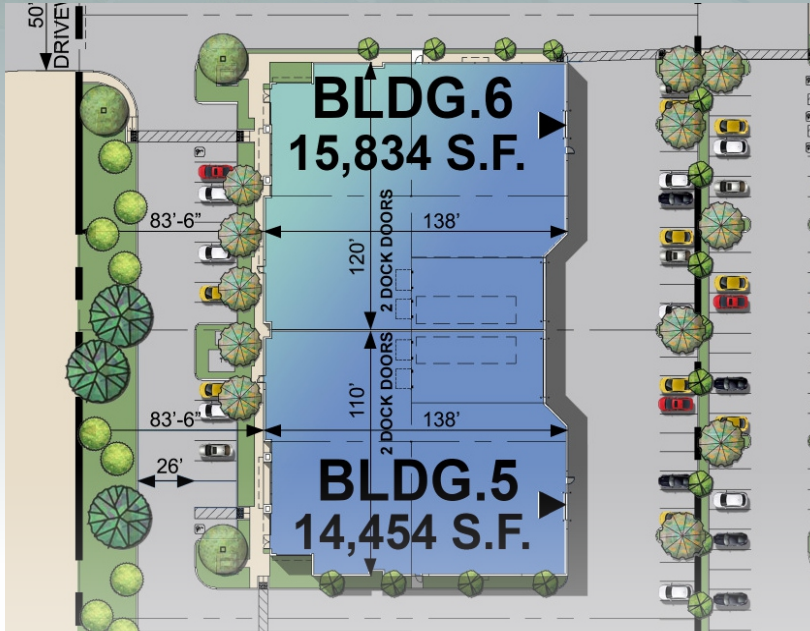
CHINO INDUSTRIAL CENTER

- 7116 BICKMORE AVE. ■ 16067 EUCLID AVE. ■ 16041 EUCLID AVE.
- 10621 EUCLID AVE. ■ 15995 EUCLID AVE. ■ 15969 EUCLID AVE.

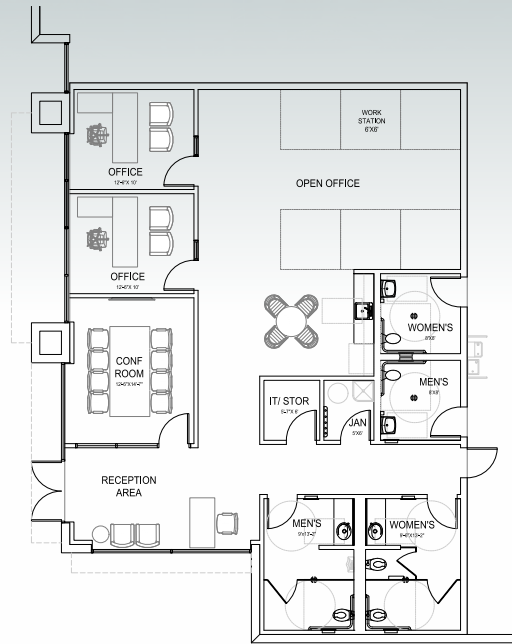


AVAILABLE
4Q 2022

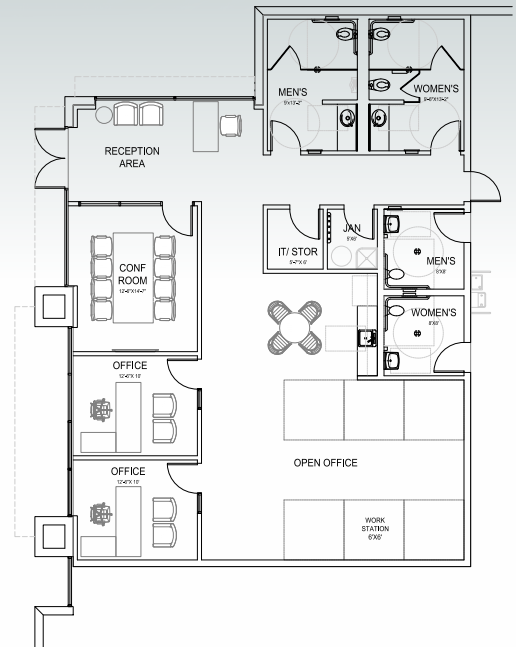
BLDG.
3-8



BUILDINGS 5-6



FLOOR PLAN | BLDG 5



FLOOR PLAN | BLDG 6

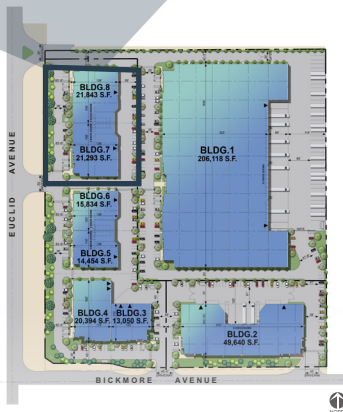
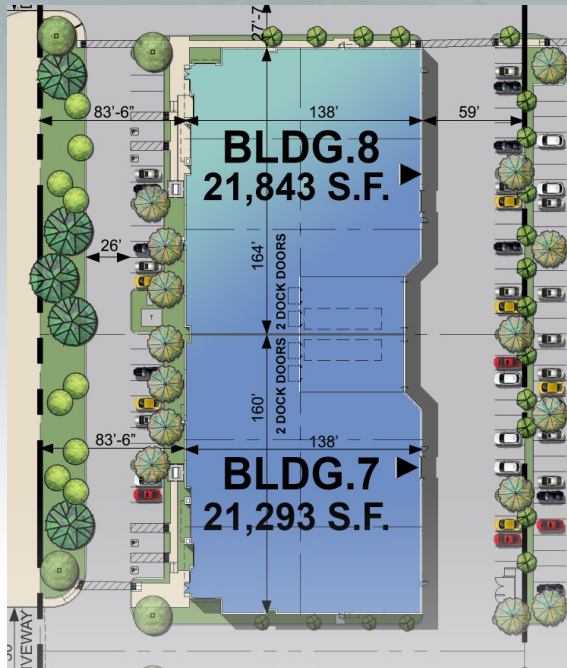
CHINO INDUSTRIAL CENTER

- 7116 BICKMORE AVE. ■ 16067 EUCLID AVE. ■ 16041 EUCLID AVE.
- 10621 EUCLID AVE. ■ 15995 EUCLID AVE. ■ 15969 EUCLID AVE.

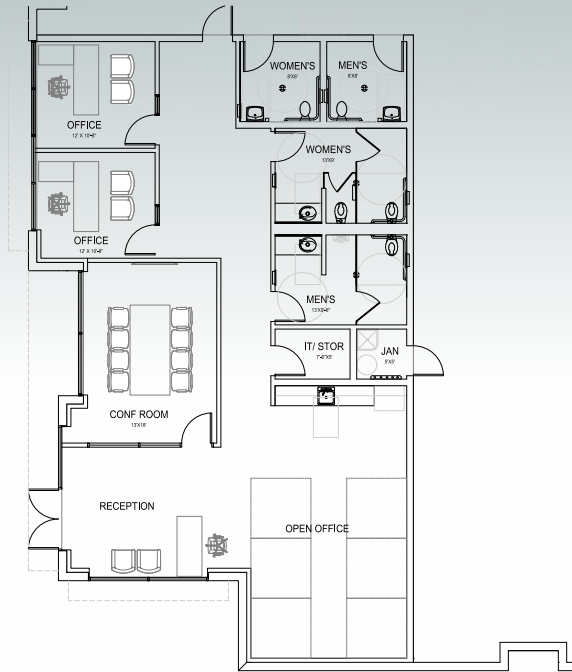


AVAILABLE
4Q 2022

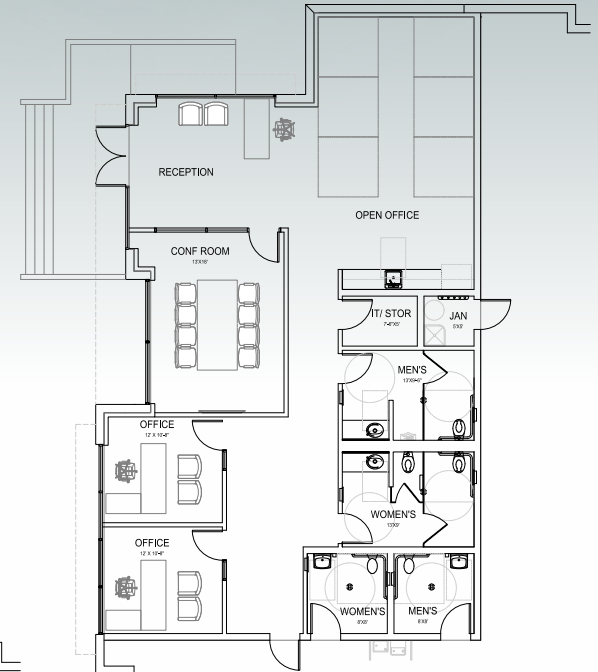
BLDG.
3-8



BUILDINGS 7-8



FLOOR PLAN | BLDG 7

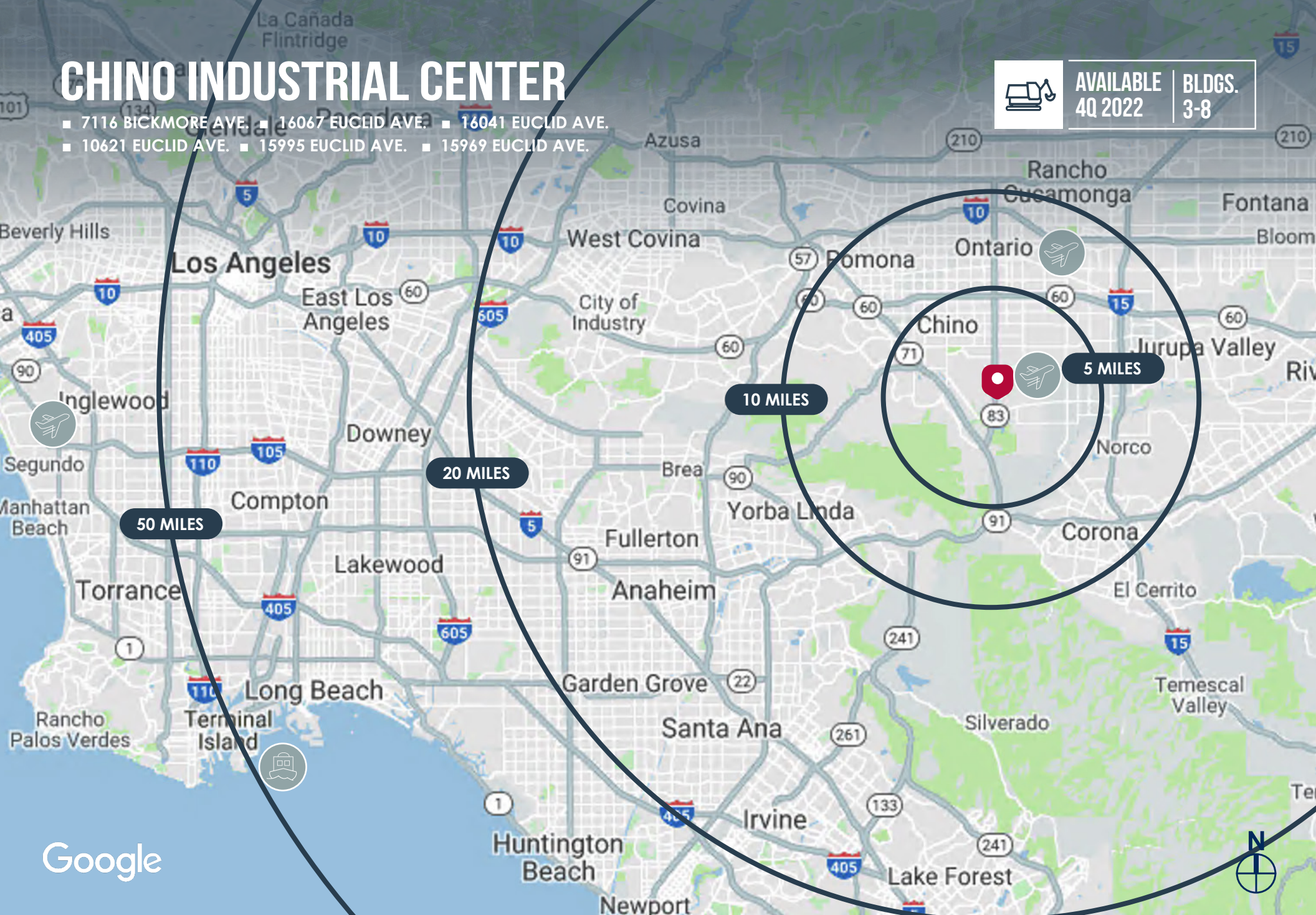


FLOOR PLAN | BLDG 8

CHINO INDUSTRIAL CENTER

- 7116 BICKMORE AVE. ■ 16067 EUCLID AVE. ■ 16041 EUCLID AVE.
- 10621 EUCLID AVE. ■ 15995 EUCLID AVE. ■ 15969 EUCLID AVE.

 AVAILABLE 4Q 2022 | BLDGS. 3-8



Google

D/AQ Corp. #01129558. Maps Courtesy ©Google & ©Microsoft. Although all information is furnished regarding for sale, rental or financing is from sources deemed reliable, such information has not been verified and no express representation is made nor is any to be implied as to the accuracy thereof, and it is submitted subject to errors, omissions, changes of price, rental or other conditions, prior sale, lease or financing, or withdrawal without notice.

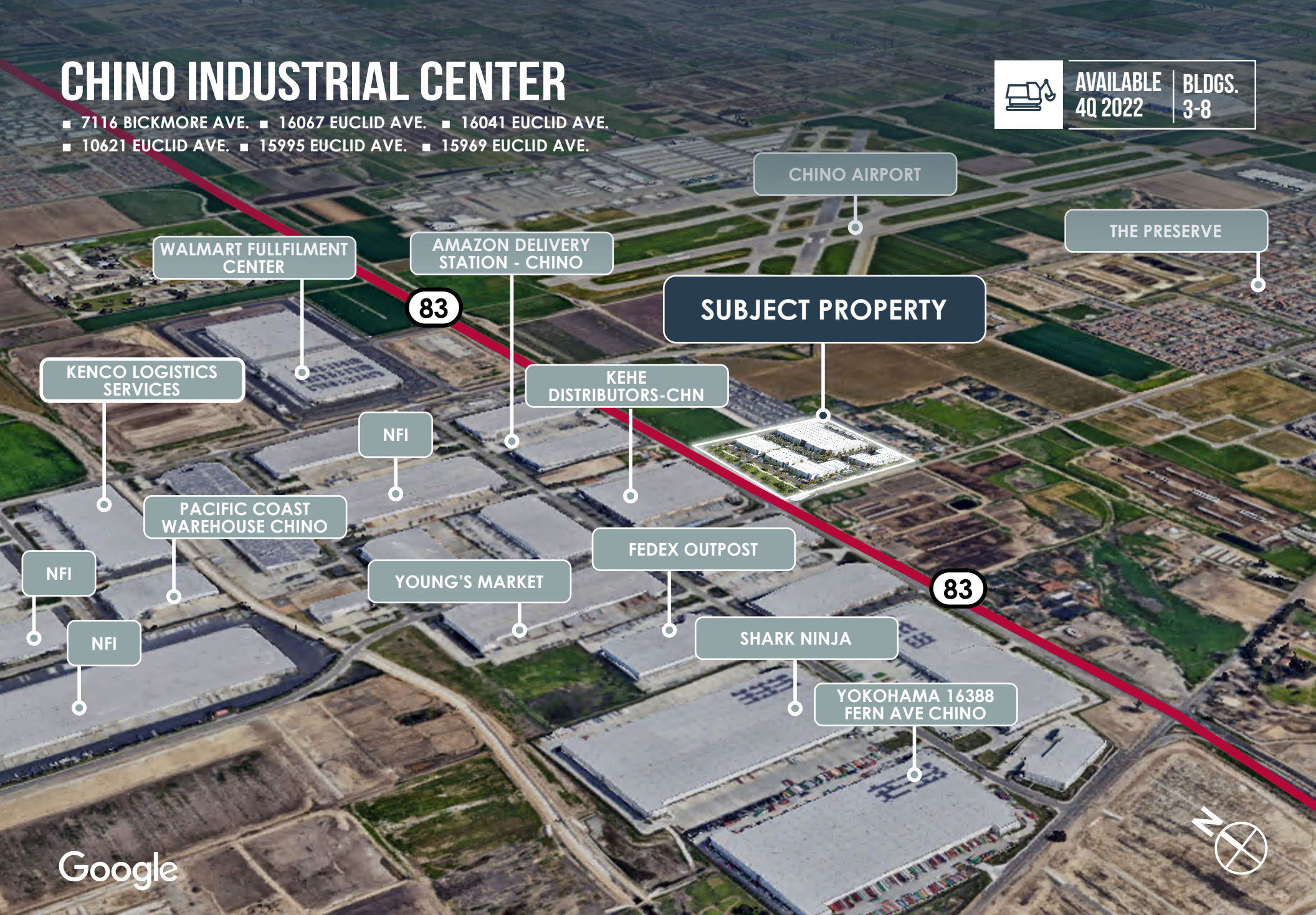
ALERE
PROPERTY GROUP LLC

DAUM
COMMERCIAL REAL ESTATE SERVICES

CHINO INDUSTRIAL CENTER

- 7116 BICKMORE AVE. ■ 16067 EUCLID AVE. ■ 16041 EUCLID AVE.
- 10621 EUCLID AVE. ■ 15995 EUCLID AVE. ■ 15969 EUCLID AVE.

 AVAILABLE 4Q 2022 | BLDGS. 3-8



CHINO AIRPORT

THE PRESERVE

WALMART FULLFILMENT CENTER

AMAZON DELIVERY STATION - CHINO

SUBJECT PROPERTY

83

KENCO LOGISTICS SERVICES

KEHE DISTRIBUTORS-CHN

NFI

PACIFIC COAST WAREHOUSE CHINO

FEDEX OUTPOST

NFI

YOUNG'S MARKET

83

NFI

SHARK NINJA

YOKOHAMA 16388 FERN AVE CHINO

Google

CHINO INDUSTRIAL CENTER

- 7116 BICKMORE AVE. ■ 16067 EUCLID AVE. ■ 16041 EUCLID AVE.
- 10621 EUCLID AVE. ■ 15995 EUCLID AVE. ■ 15969 EUCLID AVE.

AVAILABLE
4Q 2022

BLDGS.
3-8



D/AQ Corp. #01129558. Maps Courtesy ©Google & ©Microsoft. Although all information is furnished regarding for sale, rental or financing is from sources deemed reliable, such information has not been verified and no express representation is made nor is any to be implied as to the accuracy thereof, and it is submitted subject to errors, omissions, changes of price, rental or other conditions, prior sale, lease or financing, or withdrawal without notice.

ALERE
PROPERTY GROUP LLC

DAUM
COMMERCIAL REAL ESTATE SERVICES

CHINO INDUSTRIAL CENTER

- 7116 BICKMORE AVE. ■ 16067 EUCLID AVE. ■ 16041 EUCLID AVE.
- 10621 EUCLID AVE. ■ 15995 EUCLID AVE. ■ 15969 EUCLID AVE.



AVAILABLE 4Q 2022	BLDGS. 3-8
----------------------	---------------



D/AQ Corp. #01129558. Maps Courtesy ©Google & ©Microsoft. Although all information is furnished regarding for sale, rental or financing is from sources deemed reliable, such information has not been verified and no express representation is made nor is any to be implied as to the accuracy thereof, and it is submitted subject to errors, omissions, changes of price, rental or other conditions, prior sale, lease or financing, or withdrawal without notice.