

CHINO INDUSTRIAL CENTER

7166 BICKMORE AVE. | CHINO, CA

BLDG. 2

NOW COMPLETED +
AVAILABLE



FOR LEASE ±49,640 SF

PROPERTY HIGHLIGHTS

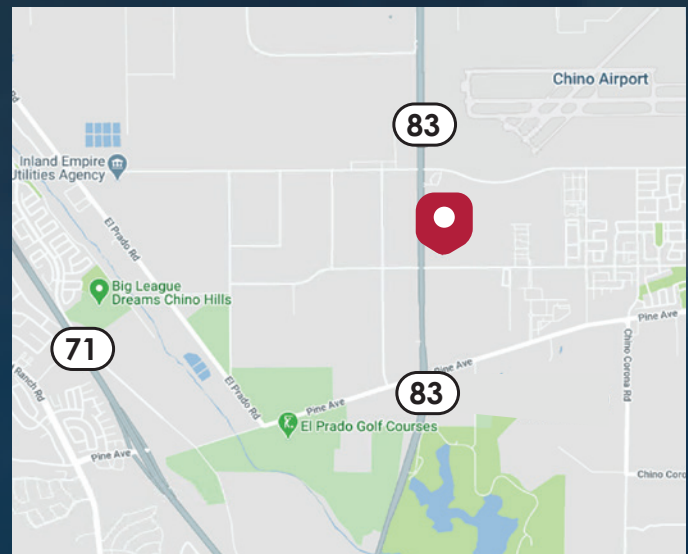
- 49,640 SF Concrete Tilt Up Industrial
- 3,307 SF of Office Space
- 126,154 SF / 2.9 Acres of Land
- ESFR Sprinkler System
- 30' Clearance
- 6 Dock High Doors
- 6- Existing 35,000lb Mechanical Load Levelers
- 2 GL Doors
- 60' x 52' Bay Spacing
- 800 AMPS 277/480 Power Service (Expandable to 2,000 AMPS)
- Scrim Foil Ceiling
- 3% Skylights
- Existing LED Lighting in Warehouse
- 65 Car Parking Spots
- Secured Truck Court

FOR MORE INFORMATION, CONTACT:

KEN ANDERSEN, CCIM, SIOR
EXECUTIVE VICE PRESIDENT
O: 909.912.0002 | C: 949.350.3933
KEN.ANDERSEN@DAUMCOMMERCIAL.COM
CA DRE: 00902084

ERIC FIKSE | SIOR
EXECUTIVE VICE PRESIDENT
P: 909.652.9056 | F: 909.652.9076
ERIC.FIKSE@DAUMCOMMERCIAL.COM
CA DRE #01457380

RICHARD C. JOHN | SIOR
EXECUTIVE VICE PRESIDENT
P: 909.912.0001 | M: 949.378.4661
RJ@DAUMCOMMERCIAL.COM
CA DRE #00800783

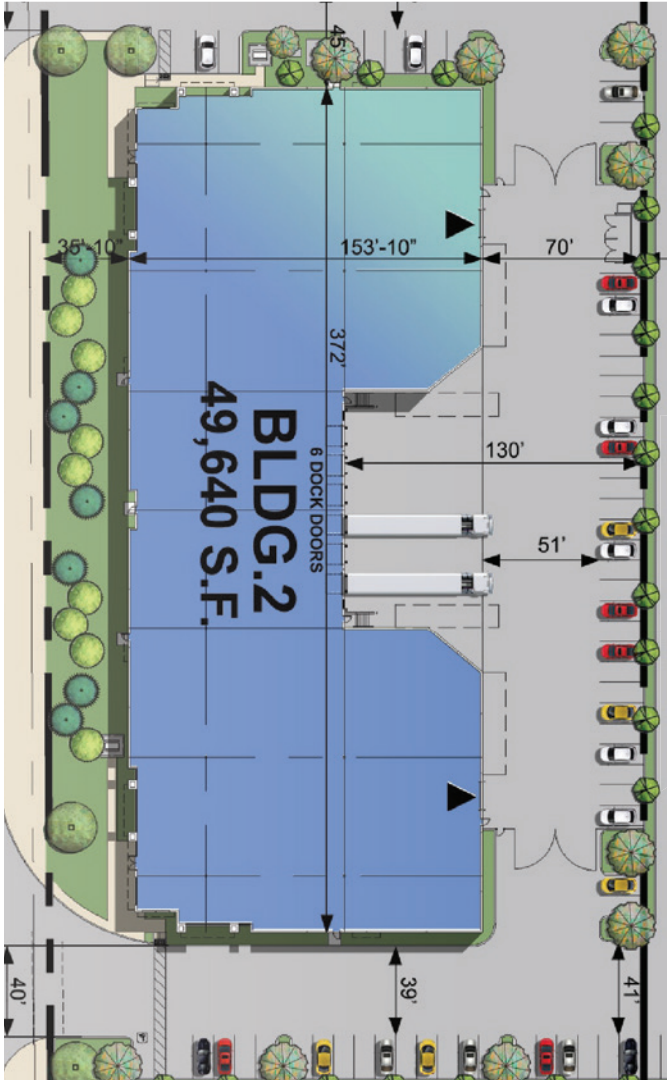


CHINO INDUSTRIAL CENTER

7166 BICKMORE AVE. | CHINO, CA

BLDG. 2

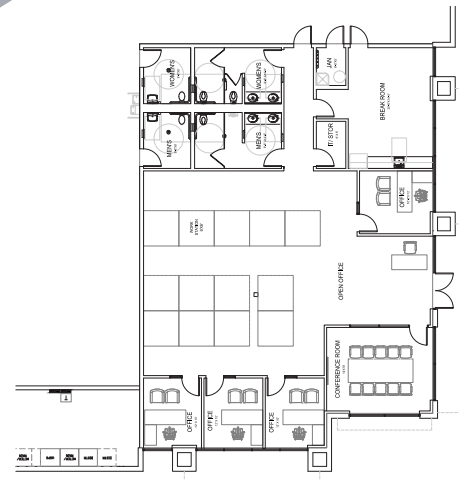
NOW COMPLETED + AVAILABLE



BUILDING 2



SITE PLAN



OFFICE PLAN

FOR MORE INFORMATION, CONTACT:

KEN ANDERSEN, CCIM, SIOR
 EXECUTIVE VICE PRESIDENT
 O: 909.912.0002 | C: 949.350.3933
 KEN.ANDERSEN@DAUMCOMMERCIAL.COM
 CA DRE: 00902084

ERIC FIKSE | SIOR
 EXECUTIVE VICE PRESIDENT
 P: 909.652.9056 | F: 909.652.9076
 ERIC.FIKSE@DAUMCOMMERCIAL.COM
 CA DRE #01457380

RICHARD C. JOHN | SIOR
 EXECUTIVE VICE PRESIDENT
 P: 909.912.0001 | M: 949.378.4661
 RJ@DAUMCOMMERCIAL.COM
 CA DRE #00800783

D/AQ Corp. #01129558. Maps Courtesy @Google & @Microsoft. Although all information is furnished regarding for sale, rental or financing is from sources deemed reliable, such information has not been verified and no express representation is made nor is any to be implied as to the accuracy thereof, and it is submitted subject to errors, omissions, changes of price, rental or other conditions, prior sale, lease or financing, or withdrawal without notice.

ALERE
 PROPERTY GROUP LLC

DAUM
 COMMERCIAL REAL ESTATE SERVICES