

CHINO INDUSTRIAL CENTER

7116 BICKMORE AVE. & 16067 EUCLID AVE. | CHINO, CA

BLDG. 3-4

NOW COMPLETED + AVAILABLE

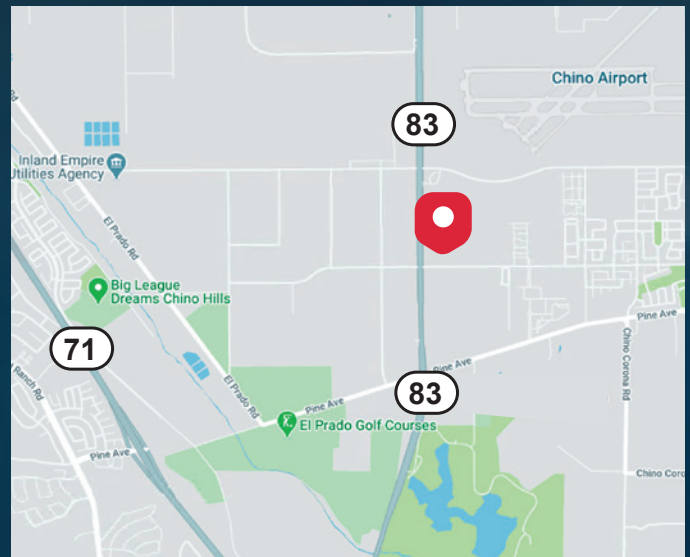


FOR LEASE ±33,444 SF

DIVISIBLE TO ±20,394 SF AND ±13,050 SF

BUILDING SPECIFICATIONS

	Bldgs. 3 & 4	Bldg 3	Bldg 4
Addresses	7116 Bickmore Ave. 16067 Euclid Ave.	7116 Bickmore Ave.	16067 Euclid Ave.
Site Area	3.16 AC	1.92 AC	1.24 AC
Total Building Area (SF)	33,444	13,050	20,394
Spec Office (SF)	4,000	2,053	2,053
Bay Spacing	60'x52'	60'x52'	60'x52'
Provided Car Parking	52	24	28
Dock Positions	0	0	0
Drive-in Door	4	2	2
Lighting	Existing LED lighting in warehouse		
Service	2 - 400A Services 277/480 Expandable to 800A	400A Service 277/480 Expandable to 800A	400A Service 277/480 Expandable to 800A
Sprinkler Density	ESFR	ESFR	ESFR



FOR MORE INFORMATION, CONTACT:

KEN ANDERSEN, CCIM, SIOR
EXECUTIVE VICE PRESIDENT
O: 909.912.0002 | C: 949.350.3933
KEN.ANDERSEN@DAUMCOMMERCIAL.COM
CA DRE: 00902084

ERIC FIKSE | SIOR
EXECUTIVE VICE PRESIDENT
P: 909.652.9056 | F: 909.652.9076
ERIC.FIKSE@DAUMCOMMERCIAL.COM
CA DRE #01457380

RICHARD C. JOHN | SIOR
EXECUTIVE VICE PRESIDENT
P: 909.912.0001 | M: 949.378.4661
RJ@DAUMCOMMERCIAL.COM
CA DRE #00800783

D/AQ Corp. #01129558. Maps Courtesy ©Google & ©Microsoft. Although all information is furnished regarding for sale, rental or financing is from sources deemed reliable, such information has not been verified and no express representation is made nor is any to be implied as to the accuracy thereof, and it is submitted subject to errors, omissions, changes of price, rental or other conditions, prior sale, lease or financing, or withdrawal without notice.

ALERE
PROPERTY GROUP LLC

DAUM
COMMERCIAL REAL ESTATE SERVICES

CHINO INDUSTRIAL CENTER

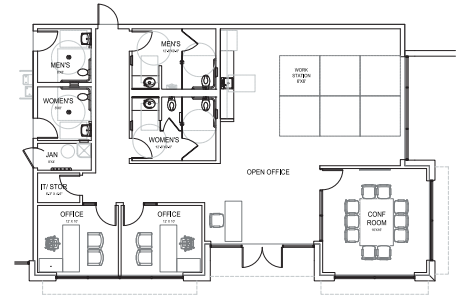
7116 BICKMORE AVE. & 16067 EUCLID AVE. | CHINO, CA

BLDG. 3-4

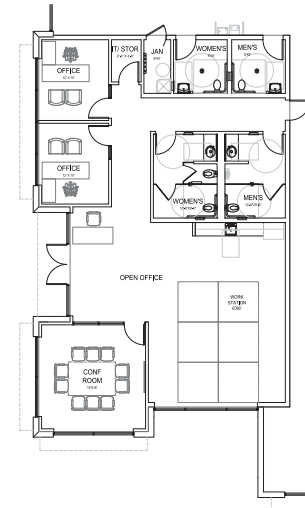
NOW COMPLETED + AVAILABLE



BUILDINGS 3-4



FLOOR PLAN | BLDG



FLOOR PLAN | BLDG

FOR MORE INFORMATION, CONTACT:

KEN ANDERSEN, CCIM, SIOR
 EXECUTIVE VICE PRESIDENT
 O: 909.912.0002 | C: 949.350.3933
 KEN.ANDERSEN@DAUMCOMMERCIAL.COM
 CA DRE: 00902084

ERIC FIKSE | SIOR
 EXECUTIVE VICE PRESIDENT
 P: 909.652.9056 | F: 909.652.9076
 ERIC.FIKSE@DAUMCOMMERCIAL.COM
 CA DRE #01457380

RICHARD C. JOHN | SIOR
 EXECUTIVE VICE PRESIDENT
 P: 909.912.0001 | M: 949.378.4661
 RJ@DAUMCOMMERCIAL.COM
 CA DRE #00800783

D/AQ Corp. #01129558. Maps Courtesy ©Google & ©Microsoft. Although all information is furnished regarding for sale, rental or financing is from sources deemed reliable, such information has not been verified and no express representation is made nor is any to be implied as to the accuracy thereof, and it is submitted subject to errors, omissions, changes of price, rental or other conditions, prior sale, lease or financing, or withdrawal without notice.

