

# FOR LEASE

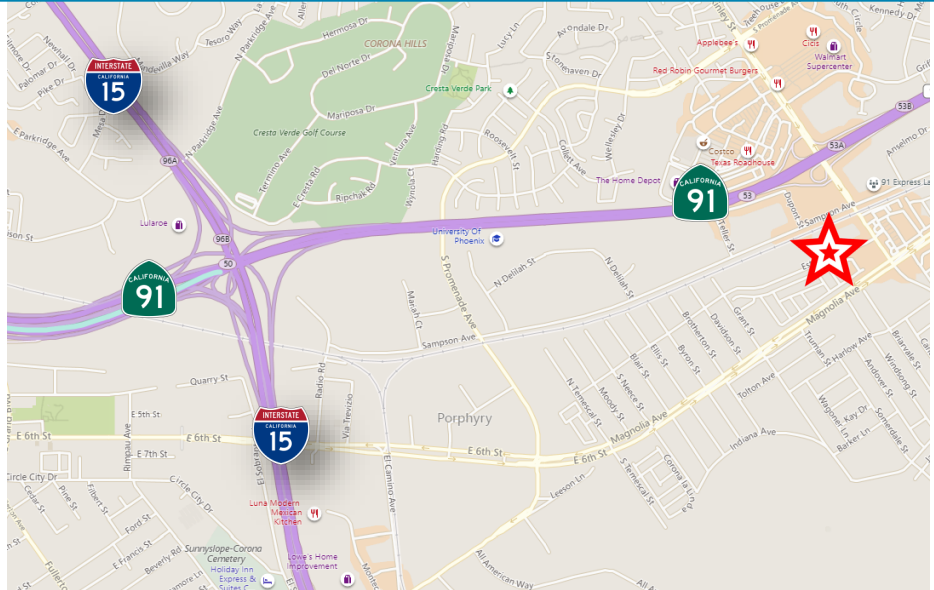
±5,400 SF OFFICE WITH  
FLEX WAREHOUSE & YARD

13445 ESTELLE ST | CORONA, CA 92879



## PROPERTY FEATURES

- Approximately 2,600 SF 2nd Story Mezzanine Office & 2,800 SF Storage Area (est.)
- Convenient Access to 91 & 15 Freeways
- One (1) Ground Level Door
- One (1) Restroom
- Gated Yard



## CONTACT:

**Christina Gurdzhyan**  
Associate

Office: 909.912.0010 | Cell: 562.325.4079

cgurdzhyan@daumcommercial.com

CA License #02071335

**Noah Samarin**  
Vice President

Office: 909.912.0007 | Cell: 714.812.1289

nsamarin@daumcommercial.com

CA License #01755814

**DAUM**

COMMERCIAL REAL ESTATE SERVICES

www.daumcommercial.com

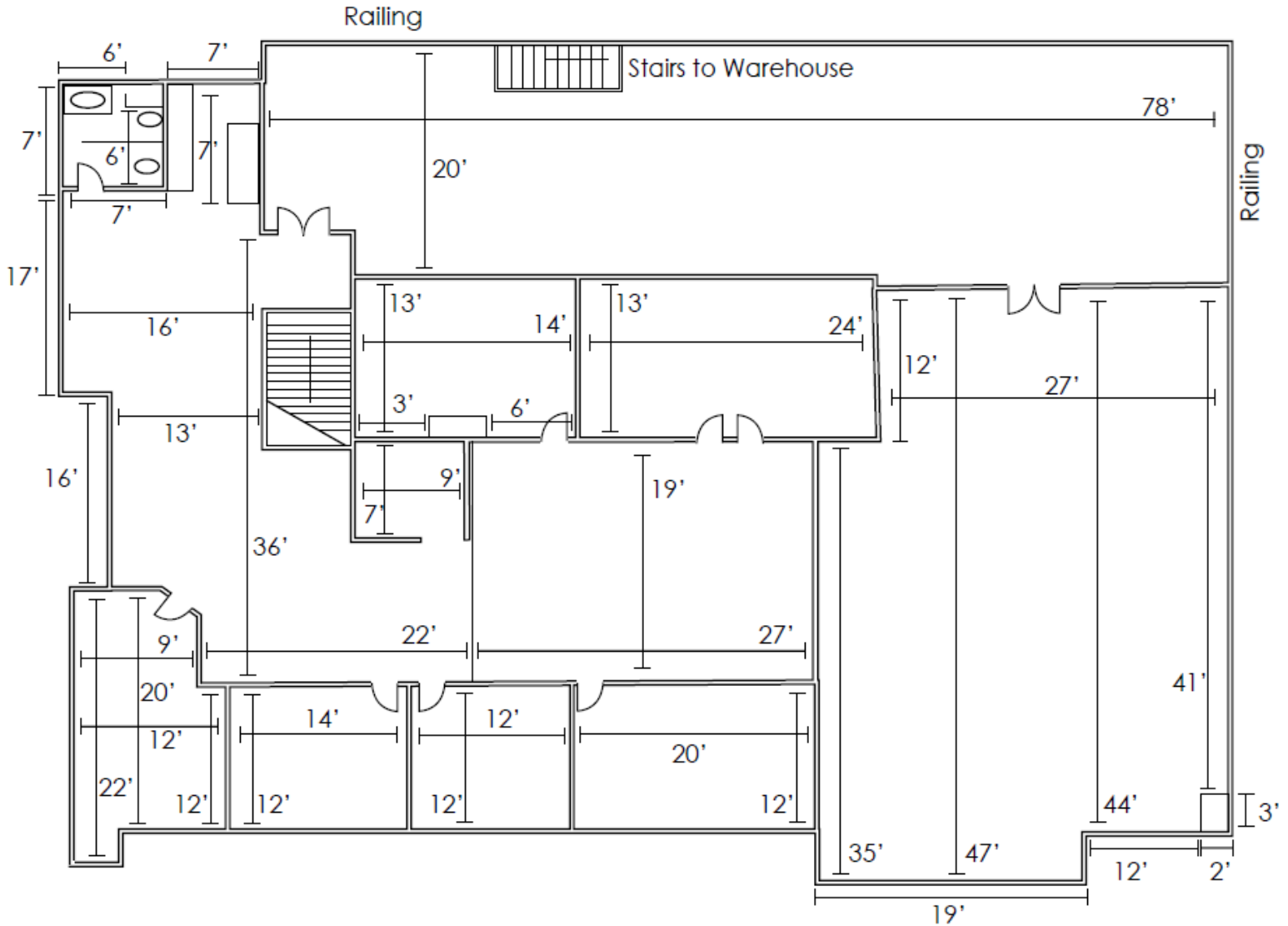
D/AQ Corp #01129558. Maps Courtesy ©Google & ©Microsoft. Although all information is furnished regarding for sale, rental or financing is from sourced deemed reliable, such information has not been verified and no express representation is made nor is any to be implied as to the accuracy thereof, and it is submitted subject to errors, omissions, changes of price, rental or other conditions, prior sale, lease or financing or withdrawal without notice.

ONCOR INTERNATIONAL

# FOR LEASE

## ±5,400 SF OFFICE WITH FLEX WAREHOUSE & YARD

13445 ESTELLE ST | CORONA, CA 92879



Floor Plan Not to Scale\*

### CONTACT:

**Christina Gurdzhan**  
Associate

Office: 909.912.0010 | Cell: 562.325.4079

[cgurdzhan@daumcommercial.com](mailto:cgurdzhan@daumcommercial.com)

CA License #02071335

**Noah Samarin**  
Vice President

Office: 909.912.0007 | Cell: 714.812.1289

[nsamarin@daumcommercial.com](mailto:nsamarin@daumcommercial.com)

CA License #01755814

**DAUM**

COMMERCIAL REAL ESTATE SERVICES

[www.daumcommercial.com](http://www.daumcommercial.com)

D/AQ Corp #01129558. Maps Courtesy ©Google & ©Microsoft. Although all information is furnished regarding for sale, rental or financing is from sourced deemed reliable, such information has not been verified and no express representation is made nor is any to be implied as to the accuracy thereof, and it is submitted subject to errors, omissions, changes of price, rental or other conditions, prior sale, lease or financing or withdrawal without notice.

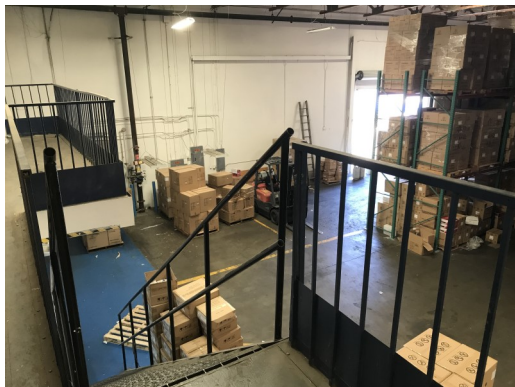


# FOR LEASE

±5,400 SF OFFICE WITH  
FLEX WAREHOUSE & YARD

13445 ESTELLE ST

CORONA, CA 92879



## CONTACT:

**Christina Gurdzhan**  
Associate

Office: 909.912.0010 | Cell: 562.325.4079

cgurdzhan@daumcommercial.com

CA License #02071335

**Noah Samarin**  
Vice President

Office: 909.912.0007 | Cell: 714.812.1289

nsamarin@daumcommercial.com

CA License #01755814

**DAUM**

COMMERCIAL REAL ESTATE SERVICES

www.daumcommercial.com

D/AQ Corp #01129558. Maps Courtesy ©Google & ©Microsoft. Although all information is furnished regarding for sale, rental or financing is from sourced deemed reliable, such information has not been verified and no express representation is made nor is any to be implied as to the accuracy thereof, and it is submitted subject to errors, omissions, changes of price, rental or other conditions, prior sale, lease or financing or withdrawal without notice.

ONCOR INTERNATIONAL