



INDUSTRIAL PROPERTY FOR LEASE

8461 HIGUERA ST.
CULVER CITY | CA, 90232

PROPERTY FEATURES:

- Hayden Tract Warehouse
- 5,800 SF Available
- \$1.45/SF Gross
- One Year Lease Term
- Available 1/10/2021
- Bow-Truss Ceiling



FOR MORE INFORMATION PLEASE CONTACT:

DAVID FREITAG
EXECUTIVE VICE PRESIDENT
P: 213.270.2235 | M: 310.413.9390
david.freitag@daumcommercial.com
CADRE #00855673

IMANI MCMILLAN
ASSOCIATE
P: 213.270.2230 | M: 310.800.4589
imani.mcmillan@daumcommercial.com
CADRE #02057115

Although all information is furnished regarding for sale, rental or financing is from sources deemed reliable, such information has not been verified and no express representation is made nor is any to be implied as to the accuracy thereof, and it is submitted subject to errors, omissions, changes of price, rental or other conditions, prior sale, lease or financing, or withdrawal without notice.

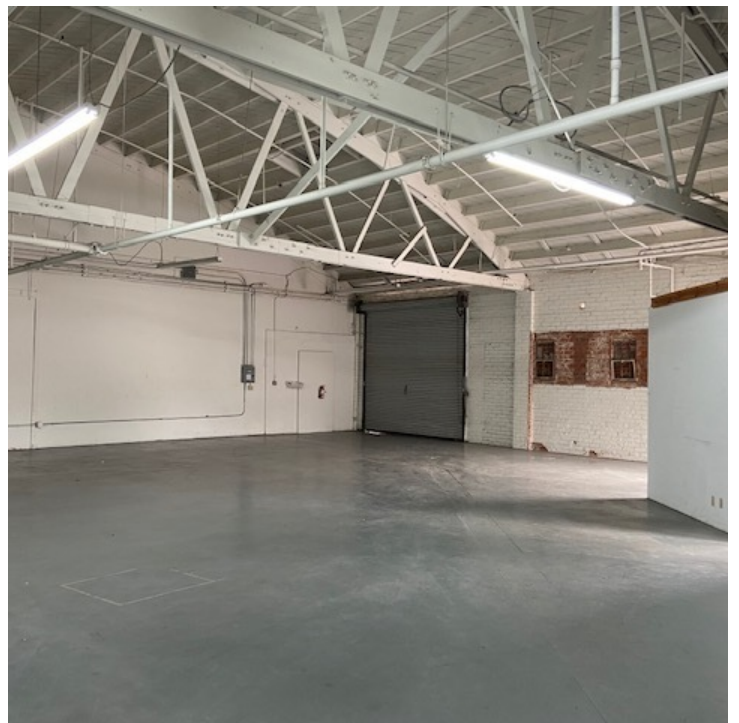
DAUM
COMMERCIAL REAL ESTATE SERVICES

8461

HIGUERA ST.
CULVER CITY | CA

FOR LEASE

INDUSTRIAL PROPERTY



Although all information is furnished regarding for sale, rental or financing is from sources deemed reliable, such information has not been verified and no express representation is made nor is any to be implied as to the accuracy thereof, and it is submitted subject to errors, omissions, changes of price, rental or other conditions, prior sale, lease or financing, or withdrawal without notice.

 **DAUM**
COMMERCIAL REAL ESTATE SERVICES