



340SF - 690SF RETAIL/OFFICE SUITES FOR LEASE

22916

LYONS AVENUE
NEWHALL | CA

FOR LEASE

OFFICE/RETAIL SUITES

FOR MORE INFORMATION PLEASE CONTACT:

PATTI KUTSCHKO

SENIOR VICE PRESIDENT

P: 661.670.2003

Patti.Kutschko@daumcommercial.com

CABRE #01225246

Although all information is furnished regarding for sale, rental or financing is from sources deemed reliable, such information has not been verified and no express representation is made nor is any to be implied as to the accuracy thereof, and it is submitted subject to errors, omissions, changes of price, rental or other conditions, prior sale, lease or financing, or withdrawal without notice.

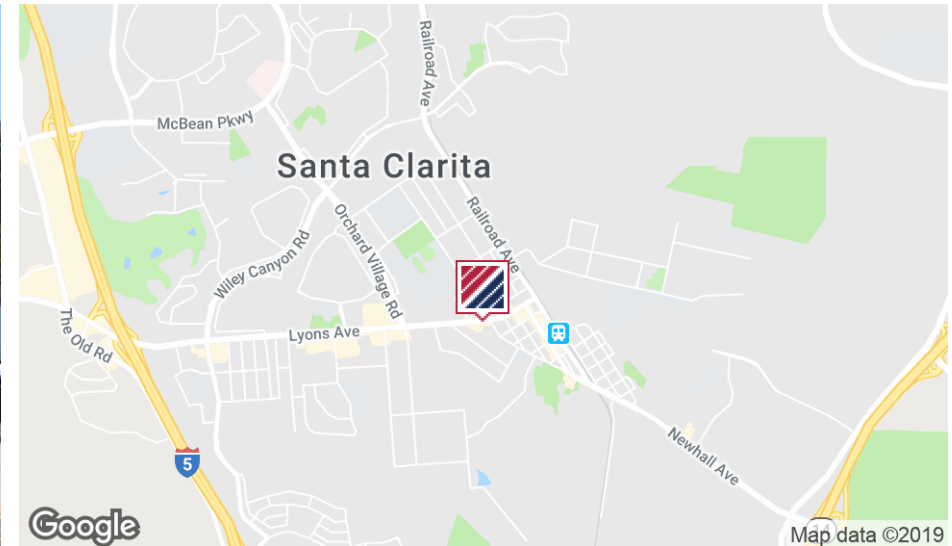
DAUM
COMMERCIAL REAL ESTATE SERVICES

FOR LEASE

OFFICE/RETAIL SUITES

22916

LYONS AVENUE
NEWHALL | CA



PROPERTY DESCRIPTION

Various Office/Retail suites in a Multi-Tenant Office/Retail complex.

PROPERTY HIGHLIGHTS

- Rare Small Suites from 340 square feet + up
- Prime Location Next to Old Town Newhall
- Excellent Street Visibility
- Walking Distance to Many Restaurants
- Utilities Included in Rent
- Walk Score
- Located on Major Public Transit Line

OFFERING SUMMARY

Lease Rate:	Negotiable
Available SF:	340 - 690 SF
Building Size:	12,614 SF

DEMOGRAPHICS	1 MILE	3 MILES	5 MILES
Total Population	22,641	89,447	179,243
Average HH Income	\$87,512	\$108,914	\$114,258

*Demographic Data Derived from 2019 Estimates (CoStar)



PATTI KUTSCHKO
SENIOR VICE PRESIDENT

P: 661.670.2003
Patti.Kutschko@daumcommercial.com
CABRE #01225246

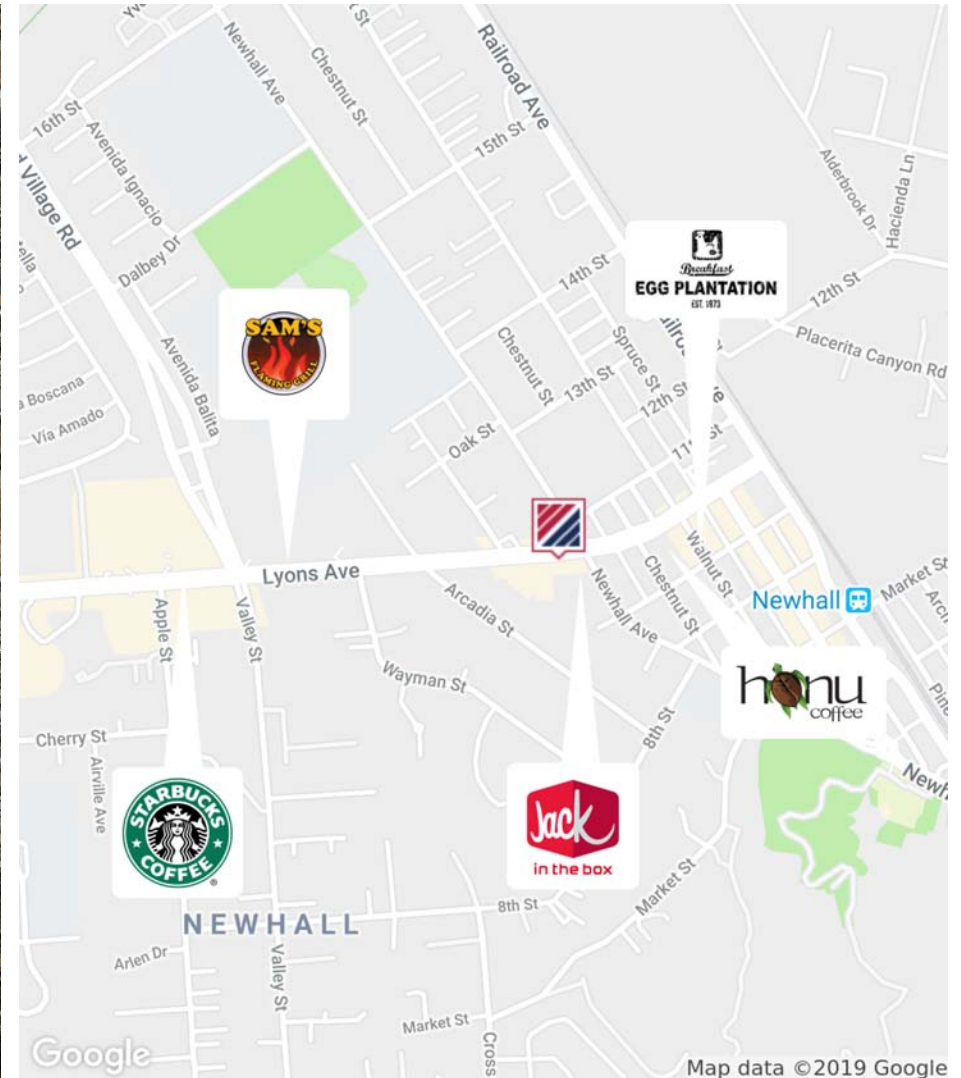
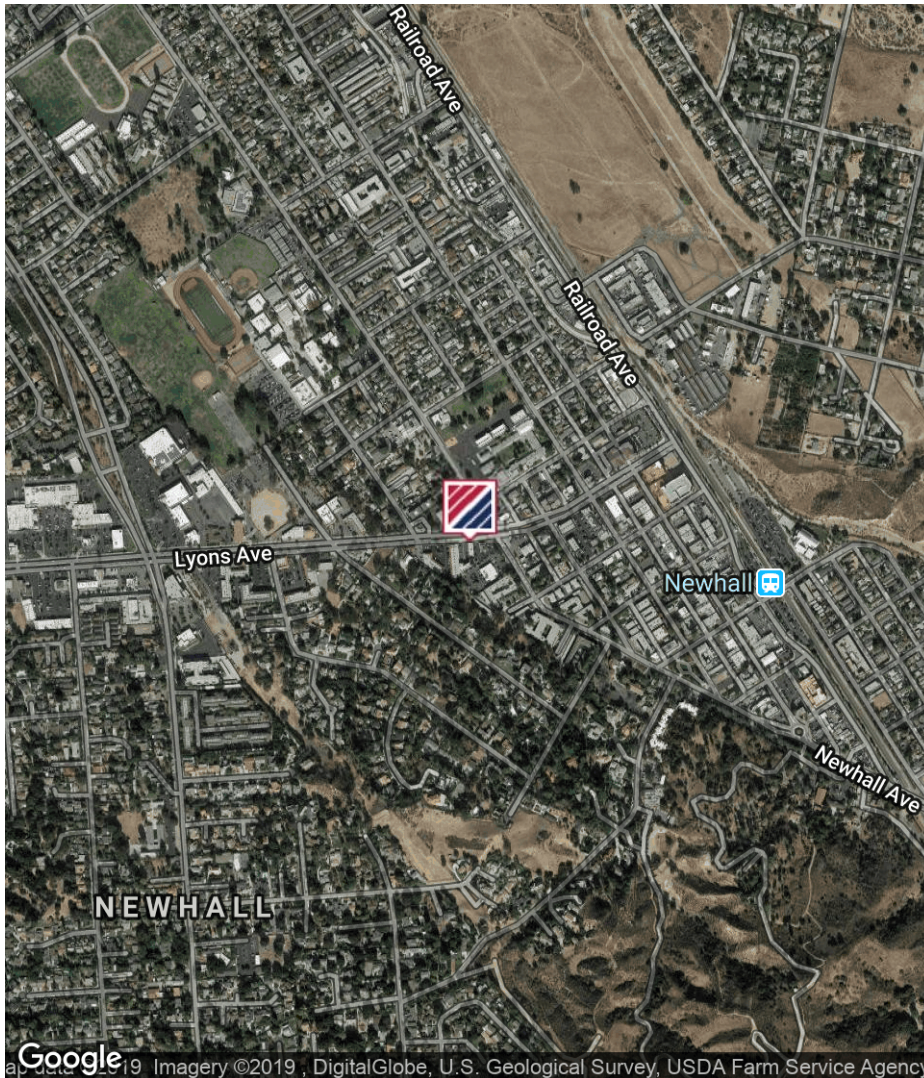
Although all information is furnished regarding for sale, rental or financing is from sources deemed reliable, such information has not been verified and no express representation is made nor is any to be implied as to the accuracy thereof, and it is submitted subject to errors, omissions, changes of price, rental or other conditions, prior sale, lease or financing, or withdrawal without notice. *Demographics derived from 2019 Estimates (CoStar)

FOR LEASE

OFFICE/RETAIL SUITES

22916

LYONS AVENUE
NEWHALL | CA



PATTI KUTSCHKO
SENIOR VICE PRESIDENT

P: 661.670.2003
Patti.Kutschko@daumcommercial.com
CABRE #01225246

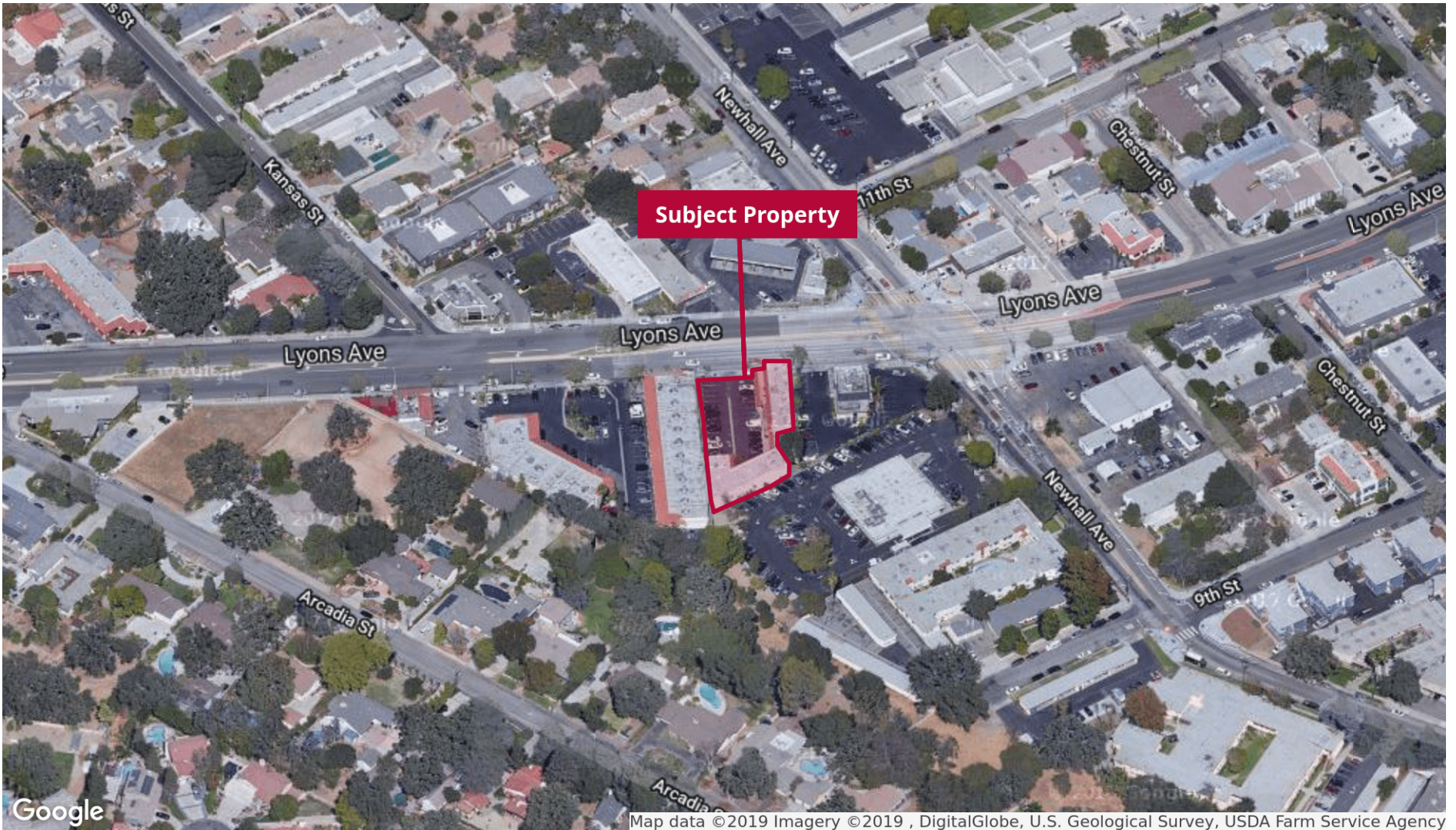
Although all information is furnished regarding for sale, rental or financing is from sources deemed reliable, such information has not been verified and no express representation is made nor is any to be implied as to the accuracy thereof, and it is submitted subject to errors, omissions, changes of price, rental or other conditions, prior sale, lease or financing, or withdrawal without notice.

FOR LEASE

OFFICE/RETAIL SUITES

22916

LYONS AVENUE
NEWHALL | CA



PATTI KUTSCHKO
SENIOR VICE PRESIDENT

P: 661.670.2003
Patti.Kutschko@daumcommercial.com
CABRE #01225246

Although all information is furnished regarding for sale, rental or financing is from sources deemed reliable, such information has not been verified and no express representation is made nor is any to be implied as to the accuracy thereof, and it is submitted subject to errors, omissions, changes of price, rental or other conditions, prior sale, lease or financing, or withdrawal without notice.

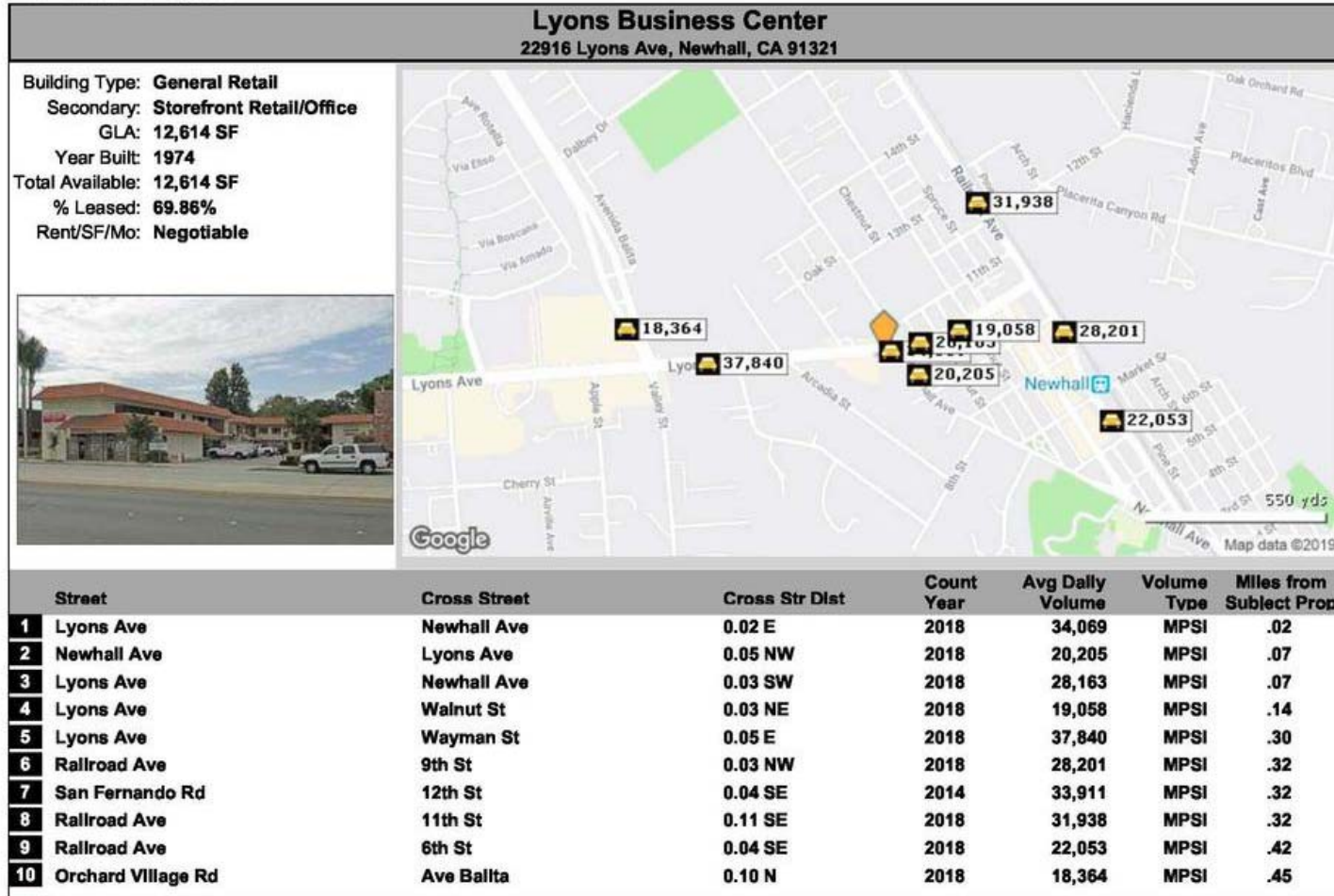
FOR LEASE

OFFICE/RETAIL SUITES

22916

LYONS AVENUE
NEWHALL | CA

Traffic Count Report



Copyrighted report licensed to DAUM Commercial Real Estate Services - 1028766.

6/24/2019



PATTI KUTSCHKO
SENIOR VICE PRESIDENT

P: 661.670.2003
 Patti.Kutschko@daumcommercial.com
 CABRE #01225246