



# 2310

LONG BEACH BLVD.,  
STE. B




## FOR LEASE

INDUSTRIAL/FLEX/R&D PROPERTY



7,221 SF  
SQUARE FEET



4,496  
OFFICE SF



12 ft  
CLEAR HEIGHT



8  
EXPANDABLE PARKING

FOR MORE INFORMATION PLEASE CONTACT:

**ANTHONY BERGEMAN**  
EXECUTIVE VICE PRESIDENT / PRINCIPAL

P: 310.538.6729  
abergeman@daumcre.com  
CABRE #01841828

**KRISHNA SHEGRAN**  
ASSOCIATE

P: 310.538.6701  
krishna.shegran@daumcommercial.com  
CABRE #02038911

Although all information is furnished regarding for sale, rental or financing is from sources deemed reliable, such information has not been verified and no express representation is made nor is any to be implied as to the accuracy thereof, and it is submitted subject to errors, omissions, changes of price, rental or other conditions, prior sale, lease or financing, or withdrawal without notice.

**DAUM**  
COMMERCIAL REAL ESTATE SERVICES

# 2310

LONG BEACH BLVD., STE. B  
LONG BEACH | CA

# FOR LEASE

INDUSTRIAL/FLEX/R&D PROPERTY

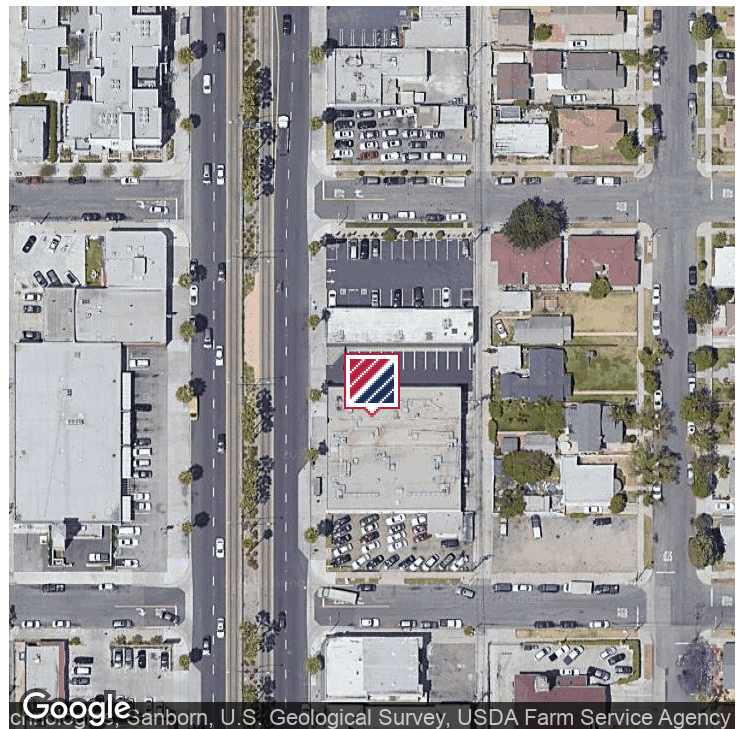


## OFFERING SUMMARY

Lease Rate:	\$1.39 PSF Gross
Available SF:	7,221
Lot Size:	0.49 Acres
Building Size:	12,791 SF

## PROPERTY

- Completely Refurbished Free Standing Office / Warehouse Flex Space w/ Storage
- 4,496 SF Office Space w/ ± 2,725 SF Warehouse Space
- Unique, Creative Features with New Identity Look
- New Roof, Office, Restrooms, Parking Lot, and Exterior Facade
- Major Long Beach Blvd Frontage

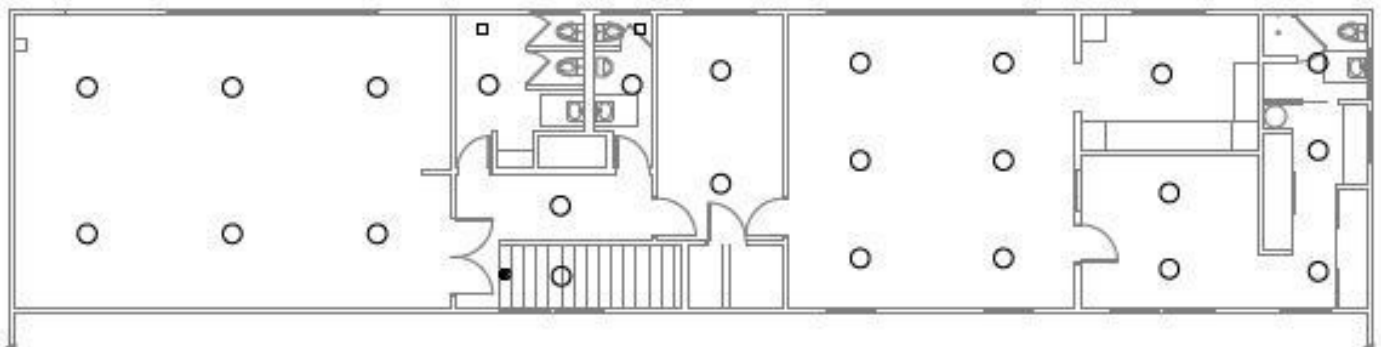
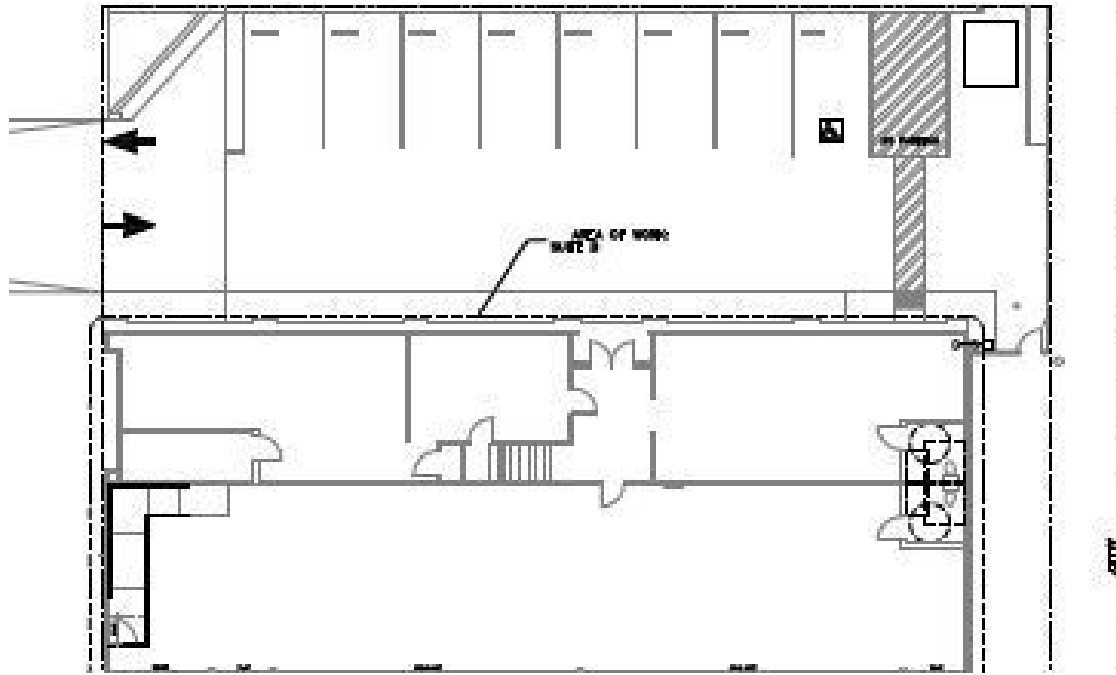


Although all information is furnished regarding for sale, rental or financing is from sources deemed reliable, such information has not been verified and no express representation is made nor is any to be implied as to the accuracy thereof, and it is submitted subject to errors, omissions, changes of price, rental or other conditions, prior sale, lease or financing, or withdrawal without notice.

# 2310

LONG BEACH BLVD, STE. B  
LONG BEACH | CA

**FOR LEASE**  
INDUSTRIAL PROPERTY



Although all information is furnished regarding for sale, rental or financing is from sources deemed reliable, such information has not been verified and no express representation is made nor is any to be implied as to the accuracy thereof, and it is submitted subject to errors, omissions, changes of price, rental or other conditions, prior sale, lease or financing, or withdrawal without notice.