



1240

N JEFFERSON STREET, UNIT P
ANAHEIM | CA



FOR SALE

INDUSTRIAL PROPERTY



1,704 SF
SQUARE FEET



800
OFFICE SF



16 ft
CLEAR HEIGHT



1
GROUND LEVEL DOOR

FOR MORE INFORMATION PLEASE CONTACT:

JIM ST. OMER ROY

VICE PRESIDENT

P: 949.242.1713

Jim.Saint@daumcommercial.com

CABRE #00944842

Although all information is furnished regarding for sale, rental or financing is from sources deemed reliable, such information has not been verified and no express representation is made nor is any to be implied as to the accuracy thereof, and it is submitted subject to errors, omissions, changes of price, rental or other conditions, prior sale, lease or financing, or withdrawal without notice.


COMMERCIAL REAL ESTATE SERVICES

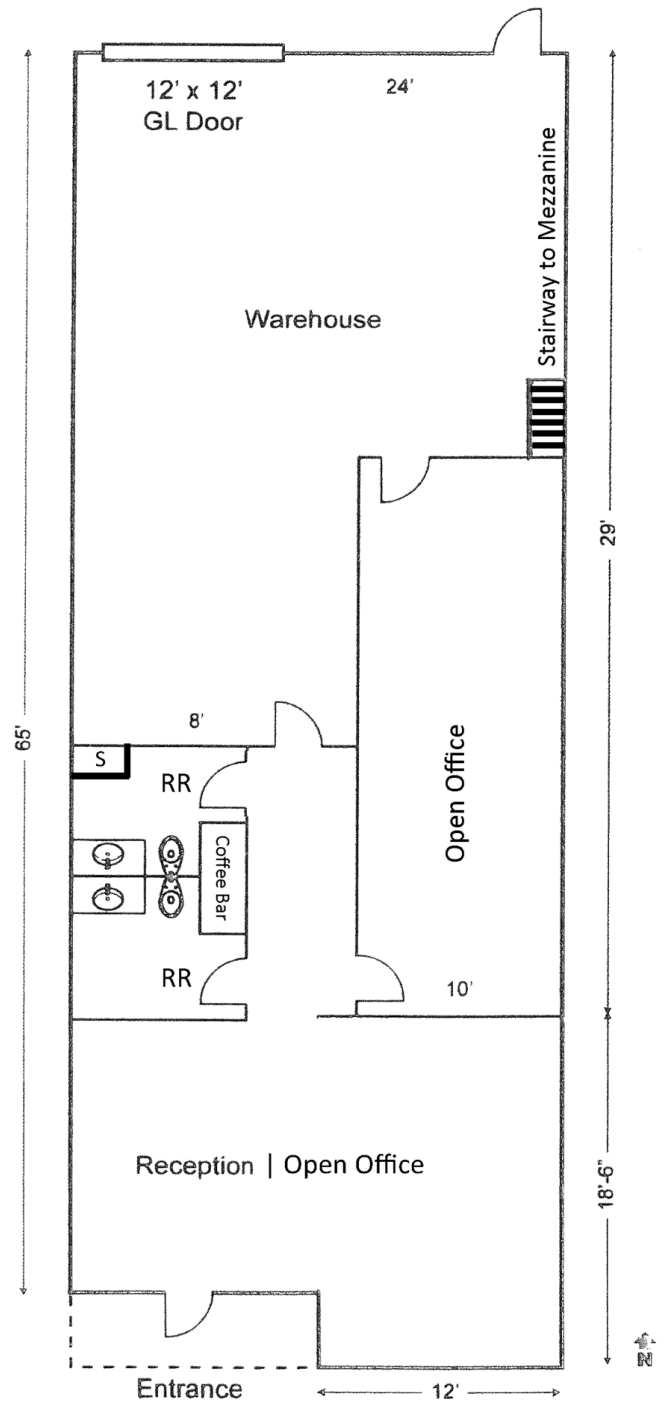
1240 N JEFFERSON STREET, UNIT P
ANAHEIM | CA

FOR SALE
INDUSTRIAL PROPERTY



PROPERTY HIGHLIGHTS

- High Image Industrial Condo
- Interior Recently Refurbished
- ±800 Sq. Ft. of Office Area
- Vaulted Ceiling in Front Office Area
- 16' Warehouse Clearance
- 12'x12' Ground Level Loading Door
- 100 Amps of Power
- Two Restrooms, Shower & Coffee Bar
- Bonus Mezzanine Storage
- Attractive Anaheim Utility Rates and Enterprise Zone Benefits
- Low Association Fees With Comprehensive Coverage
- Great Access to 91 | 57 | 55 Freeways



Although all information is furnished regarding for sale, rental or financing is from sources deemed reliable, such information has not been verified and no express representation is made nor is any to be implied as to the accuracy thereof, and it is submitted subject to errors, omissions, changes of price, rental or other conditions, prior sale, lease or financing, or withdrawal without notice.