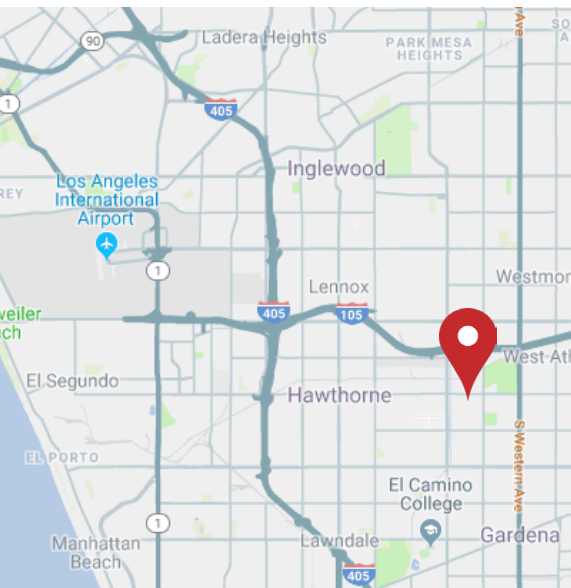




MINUTES TO LAX AT 405/105 INTERCHANGE

12605

VAN NESS AVENUE
HAWTHORNE | CA | 90250



FOR LEASE 24,000 SF INDUSTRIAL MANUFACTURING BUILDING

± 24,000
AVAILABLE SF

± 10,000
OFFICE SF

± 40
PARKING SPACES

2
DOCK HIGH
POSITIONS

PROPERTY HIGHLIGHTS

- ±24,000 SF Available
- ±10,000 SF Creative Office
- Near to SpaceX and Tesla
- Over 40 Car Parking
- 2 Dock High Position
- 1 Ground Level (Ramp)
- Minutes to the 105/405 Free-ways and LAX

EXCLUSIVE AGENT:

BRAD LEVIN | EXECUTIVE V.P. | PRINCIPAL
P: 310.538.6728
brad.levin@daumcommercial.com
CA License #01020885

Although all information is furnished regarding for sale, rental or financing is from sources deemed reliable, such information has not been verified and no express representation is made nor is any to be implied as to the accuracy thereof, and it is submitted subject to errors, omissions, changes of price, rental or other conditions, prior sale, lease or financing, or withdrawal without notice. All maps courtesy of Google Maps, Bing, and Google Earth. D/AG Corp. # 01129558

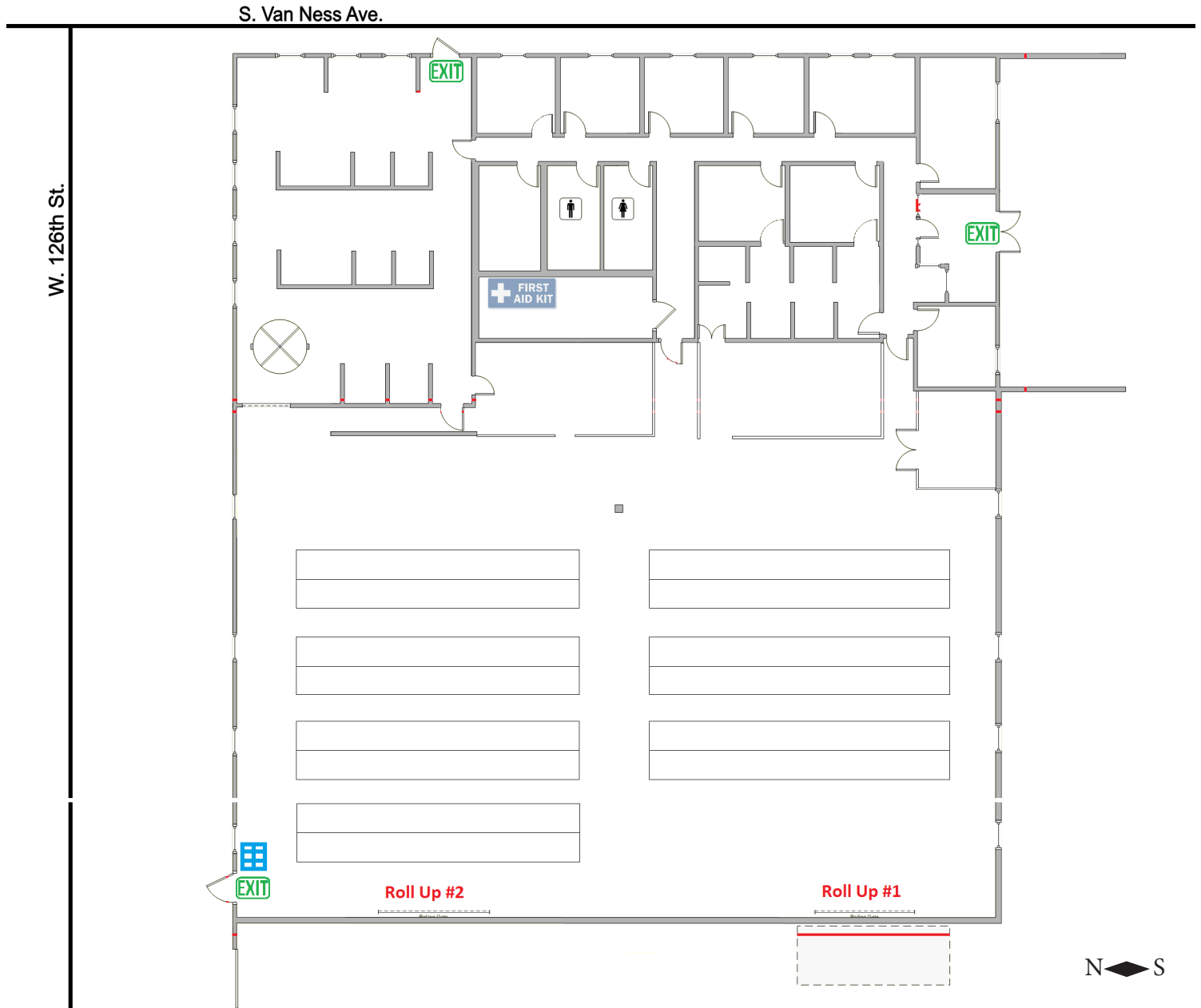
DAUM
COMMERCIAL REAL ESTATE SERVICES

FOR LEASE 24,000 SF INDUSTRIAL MANUFACTURING BUILDING

12605

VAN NESS AVENUE
HAWTHORNE | CA | 90250

SITE PLAN



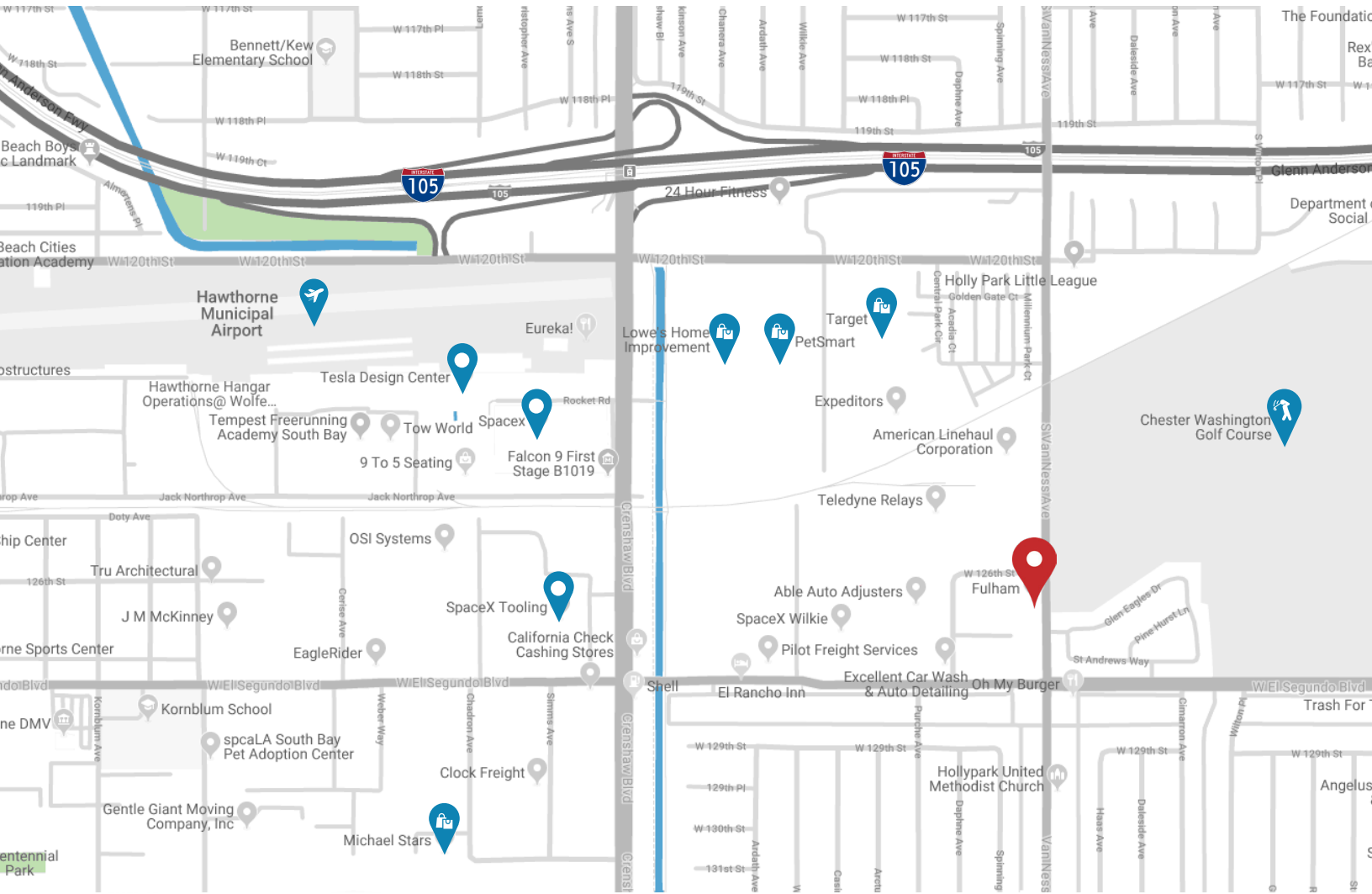
Although all information is furnished regarding for sale, rental or financing is from sources deemed reliable, such information has not been verified and no express representation is made nor is any to be implied as to the accuracy thereof, and it is submitted subject to errors, omissions, changes of price, rental or other conditions, prior sale, lease or financing, or withdrawal without notice. All maps courtesy of Google Maps, Bing, and Google Earth. D/AQ Corp. # 01129558

FOR LEASE 24,000 SF INDUSTRIAL MANUFACTURING BUILDING

12605

VAN NESS AVENUE
HAWTHORNE | CA | 90250

LOCATION MAP



Although all information is furnished regarding for sale, rental or financing is from sources deemed reliable, such information has not been verified and no express representation is made nor is any to be implied as to the accuracy thereof, and it is submitted subject to errors, omissions, changes of price, rental or other conditions, prior sale, lease or financing, or withdrawal without notice. All maps courtesy of Google Maps, Bing, and Google Earth. D/AQ Corp. # 01129558