



13810

CERRITOS CORPORATE
DRIVE, UNIT D



FOR LEASE

OFFICE BUILDING



2,797 SF
AVAILABLE SF



10
PARKING



1989
YEAR BUILT



13,750 SF
BUILDING SIZE

PROPERTY HIGHLIGHTS

- Major Street Frontage
- Centrally Located Between Los Angeles and Orange County
- Close to Cerritos Towne Center
- Easy Access to 91, 5 and 605 Freeways
- 24 Hour Availability

PROPERTY DESCRIPTION

- The Building exteriors consist of tilt-up concrete panel walls with glass storefront windows and entrances. The leasing of the 2,797 square foot unit of the larger 13,750 square foot multi-tenant office complex.

FOR MORE INFORMATION PLEASE CONTACT:

SAM CHU

SENIOR VICE PRESIDENT

P: 562.207.3303 | M: 562.355.9945

sam.chu@daumcommercial.com

CABRE #01186837

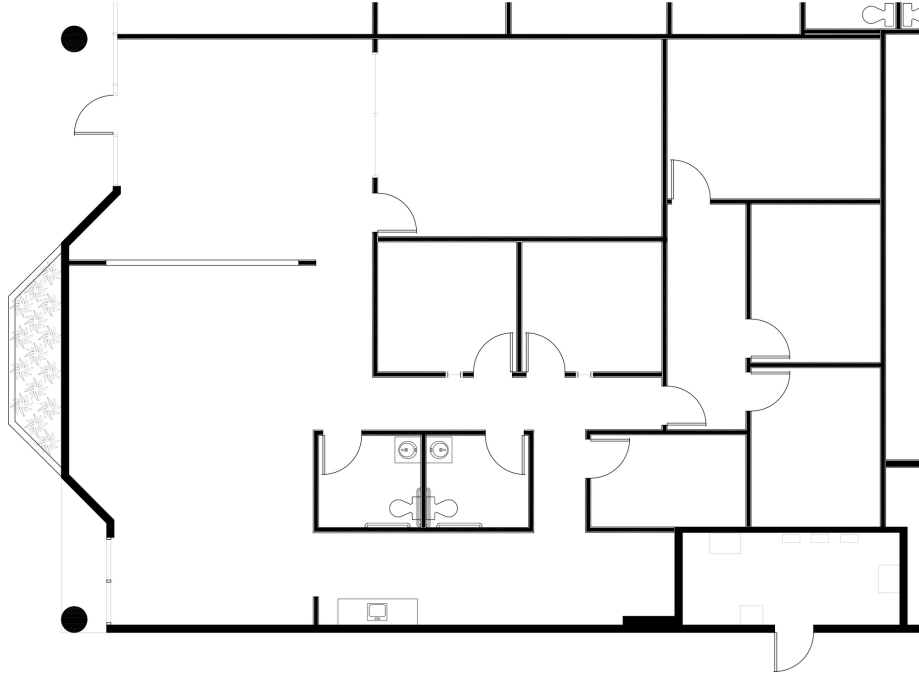
Although all information is furnished regarding for sale, rental or financing is from sources deemed reliable, such information has not been verified and no express representation is made nor is any to be implied as to the accuracy thereof, and it is submitted subject to errors, omissions, changes of price, rental or other conditions, prior sale, lease or financing, or withdrawal without notice.

DAUM
COMMERCIAL REAL ESTATE SERVICES

13810

CERRITOS CORPORATE DRIVE, UNIT D
CERRITOS | CA

FOR LEASE
OFFICE BUILDING



POPULATION	1 MILE	3 MILES	5 MILES
Total Population	9,085	189,239	600,103
Median age	41.0	35.4	35.4
Median age (Male)	40.5	33.7	33.8
Median age (Female)	41.2	36.7	36.7

HOUSEHOLDS & INCOME	1 MILE	3 MILES	5 MILES
Total households	2,655	53,142	174,434
# of persons per HH	3.4	3.6	3.4
Average HH income	\$111,573	\$84,456	\$80,360
Average house value	\$560,020	\$513,912	\$495,889

TRAFFIC COUNTS	
Marquardt Ave. and 166th St.	13,710/day

* Demographic data derived from 2010 US Census

Although all information is furnished regarding for sale, rental or financing is from sources deemed reliable, such information has not been verified and no express representation is made nor is any to be implied as to the accuracy thereof, and it is submitted subject to errors, omissions, changes of price, rental or other conditions, prior sale, lease or financing, or withdrawal without notice.

