



IMMEDIATE OCCUPANCY

THE RIDGE

30200 AGOURA ROAD
AGOURA HILLS | CALIFORNIA

FOR LEASE ±1,852 RSF
SUITE 240 | Executive Office Suite

CONTACT EXCLUSIVE LISTING AGENT FOR MORE INFORMATION:

MICHAEL D. FOXWORTHY | Executive Vice President

P: 805.384.8830

E: mike.foxworthy@daumcommercial.com

CA License #00773787



D/AQ Corp. #01129558. Maps Courtesy @Google & @Microsoft. Although all information is furnished regarding for sale, rental or financing is from sources deemed reliable, such information has not been verified and no express representation is made nor is any to be implied as to the accuracy thereof, and it is submitted subject to errors, omissions, changes of price, rental or other conditions, prior sale, lease or financing, or withdrawal without notice.

ONCOR INTERNATIONAL | www.daumcommercial.com



FEATURES

- Three Executive Offices with Extensive Windows
- Magnificent Views of the Santa Monica Mountains
- 1,852 RSF Available
- Ample Surface Parking | Over 4/1000
- Double Door Entry Off 2nd Floor Lobby
- \$ 2.85/per RSF, Modified Gross
- Project Provides a Large Conference Room, Available on a Reservation Basis

30200

AGOURA ROAD
AGOURA HILLS | CALIFORNIA

FOR LEASE ±1,852 RSF
SUITE 240 | Executive Office Suite
Photos

30200
AGOURA ROAD
AGOURA HILLS | CALIFORNIA



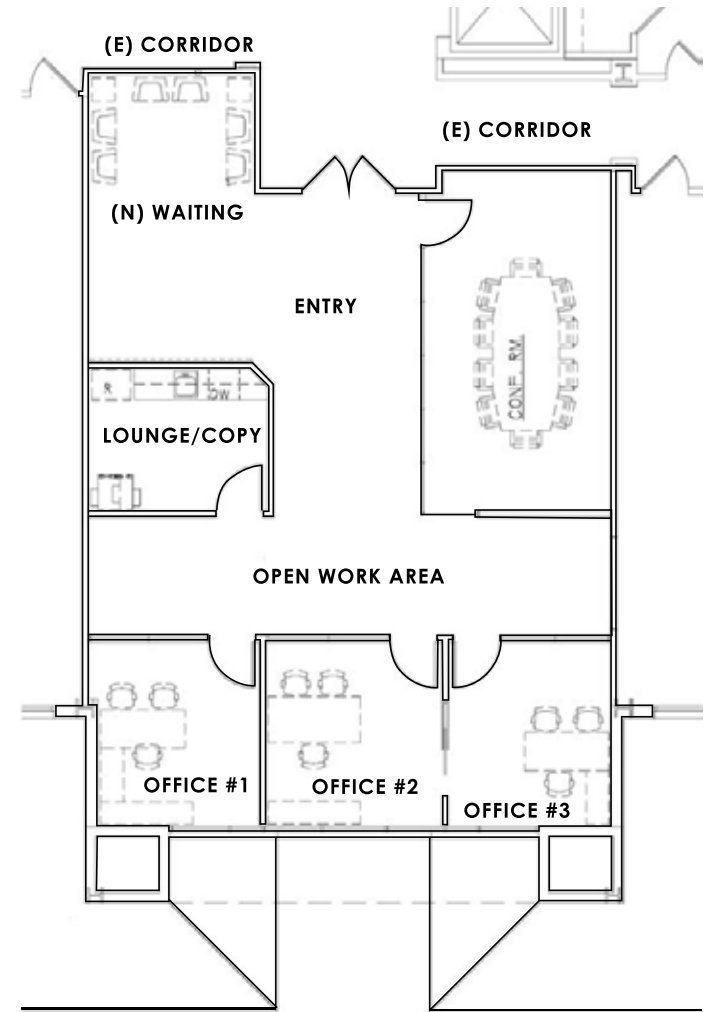
FOR LEASE ±1,852 RSF

SUITE 240 | Executive Office Suite

Aerial | Site Plan

30200

AGOURA ROAD
AGOURA HILLS | CALIFORNIA



FOR LEASE ±1,852 RSF
SUITE 240 | Executive Office Suite
Aerial Map

30200
AGOURA ROAD
AGOURA HILLS | CALIFORNIA



FOR LEASE ±1,852 RSF
SUITE 240 | Executive Office Suite
Location Map

30200
AGOURA ROAD
AGOURA HILLS | CALIFORNIA

