



CLOSE TO BOTH THE I-15 & 60 FREEWAYS

3187

CORNERSTONE DRIVE | BLDG. 1
EASTVALE | CA

FOR LEASE

±38,062 SF INDUSTRIAL WAREHOUSE



FOR MORE INFORMATION PLEASE CONTACT:

NOAH SAMARIN | VICE PRESIDENT

P: 909.912.0007

noah.samarin@daumcommercial.com

CABRE #01755814

CHRISTINA GURDZHIAN | ASSOCIATE

P: 909.912.0010

christina.gurdzhian@daumcommercial.com

CABRE #02071335

Although all information is furnished regarding for sale, rental or financing is from sources deemed reliable, such information has not been verified and no express representation is made nor is any to be implied as to the accuracy thereof, and it is submitted subject to errors, omissions, changes of price, rental or other conditions, prior sale, lease or financing, or withdrawal without notice.



FOR LEASE

±38,062 SF INDUSTRIAL WAREHOUSE

3187

CORNERSTONE DRIVE
BUILDING 1
EASTVALE | CA



BUILDING HIGHLIGHTS

- ±38,062 SF Available
- ±3,034 SF Office
- ±36,545 SF Warehouse
- 2 Ground Level Doors
- 4 Dock High Doors
- 24'-26' Clear Height
- 5 Year Lease Term

OFFERING SUMMARY

Lease Rate:	Negotiable
Net Expenses:	\$0.13/SF (estimated)
Number of Units:	1
Available SF:	38,062 SF
Lot Size:	2.25 Acres

DEMOGRAPHICS

	1 MILE	3 MILES	5 MILES
Total Households	649	11,352	44,667
Total Population	2,256	37,761	161,420
Average HH Income	\$108,096	\$82,998	\$79,842

DAUM



NOAH SAMARIN
VICE PRESIDENT

P: 909.912.0007
noah.samarin@daumcommercial.com
CABRE #01755814

CHRISTINA GURDZHANYAN
ASSOCIATE

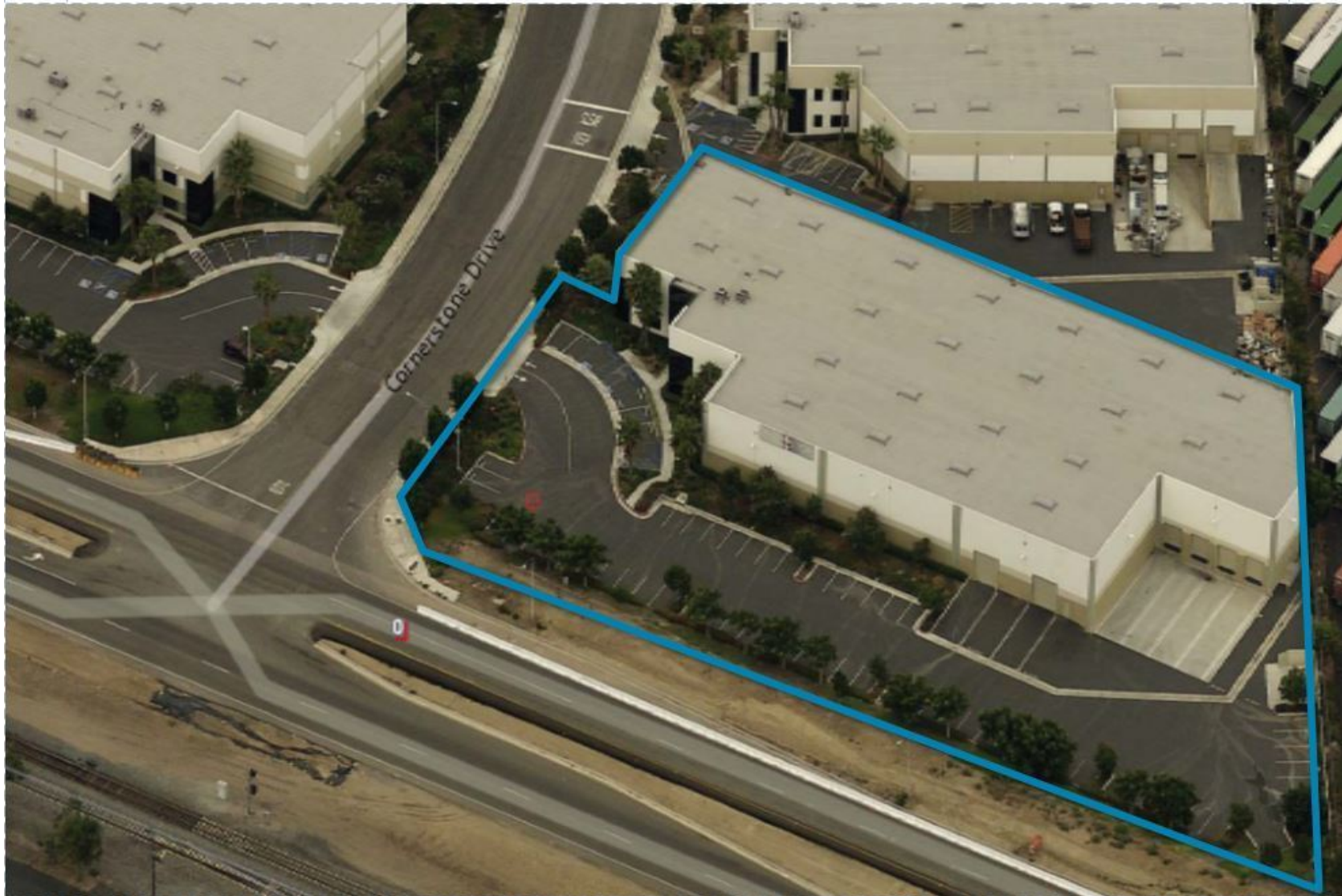
P: 909.912.0010
christina.gurdzhyan@daumcommercial.com
CABRE #02071335

FOR LEASE

±38,062 SF INDUSTRIAL WAREHOUSE

3187

CORNERSTONE DRIVE
BUILDING 1
EASTVALE | CA



DAUM

 **Glover Family, LLC**
Real Estate Investment

NOAH SAMARIN
VICE PRESIDENT

P: 909.912.0007
noah.samarin@daumcommercial.com
CABRE #01755814

CHRISTINA GURDZHIAN
ASSOCIATE

P: 909.912.0010
christina.gurdzhyan@daumcommercial.com
CABRE #02071335

Although all information is furnished regarding for sale, rental or financing is from sources deemed reliable, such information has not been verified and no express representation is made nor is any to be implied as to the accuracy thereof, and it is submitted subject to errors, omissions, changes of price, rental or other conditions, prior sale, lease or financing, or withdrawal without notice.