



13917

STAGE ROAD
SANTA FE SPRINGS | CA



15,819 SF FOR LEASE

CONTRACTOR'S YARD

PROPERTY HIGHLIGHTS

- ±15,819 SF Contractor's Yard
- ± 2,497 SF Freestanding Industrial Building
- 1,197 SF of Upgraded Office with Kitchen
- Locker-room with Shower
- 220V – 3 Phase Power (verify)
- 14' Clear Height
- Oversized Roll-Up Door (12'x12')
- Free Span Warehouse
- Air Compressor Station
- Wash Rack
- Fully Fenced/Paved Site
- M2 Zoning (Heavy Industrial)
- Immediate Freeway Access (Valley View/5 Fwy)

FOR MORE INFORMATION PLEASE CONTACT:

DENNIS HOLT
VICE PRESIDENT

P: 949.242.1714 | M: 714.423.0169
dennis.holt@daumcommercial.com
CABRE #01948978

PAUL GINGRICH
EXECUTIVE VICE PRESIDENT

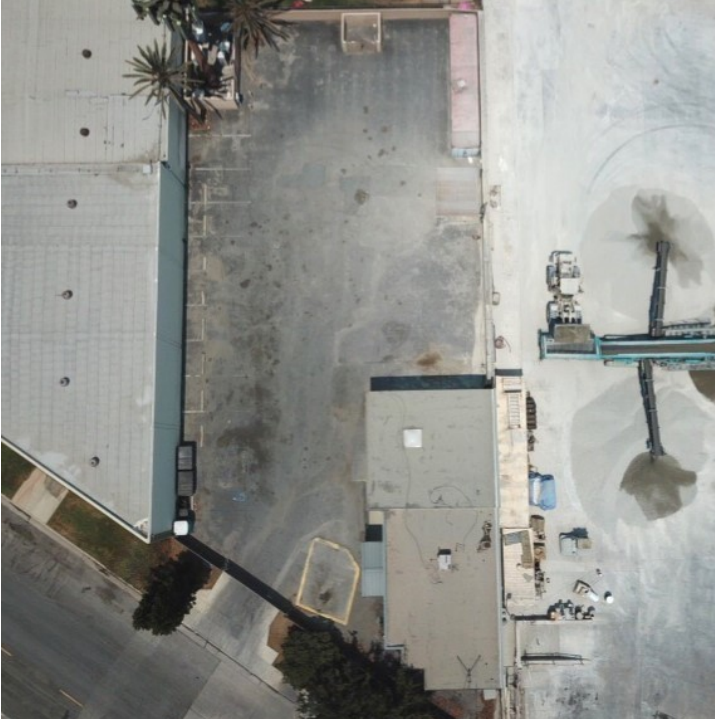
P: 714.941.5333 | M: 949.357.7467
paul.gingrich@daumcommercial.com
CABRE #01299770

Although all information is furnished regarding for sale, rental or financing is from sources deemed reliable, such information has not been verified and no express representation is made nor is any to be implied as to the accuracy thereof, and it is submitted subject to errors, omissions, changes of price, rental or other conditions, prior sale, lease or financing, or withdrawal without notice.

DAUM
COMMERCIAL REAL ESTATE SERVICES

13917 STAGE ROAD
SANTA FE SPRINGS | CA

FOR LEASE
15,819 SF CONTRACTOR'S YARD



Although all information is furnished regarding for sale, rental or financing is from sources deemed reliable, such information has not been verified and no express representation is made nor is any to be implied as to the accuracy thereof, and it is submitted subject to errors, omissions, changes of price, rental or other conditions, prior sale, lease or financing, or withdrawal without notice.

DAUM
COMMERCIAL REAL ESTATE SERVICES