

FOR LEASE

EASTHAM WARNER

UNIT 3617 | 8441 | 8437 & 8443 (AVAILABLE IMMEDIATELY) | CULVER CITY | CA

For more information, contact:

DAVID FREITAG

P: 213.270.2235

dfreitag@daumcre.com

CA License #00855673

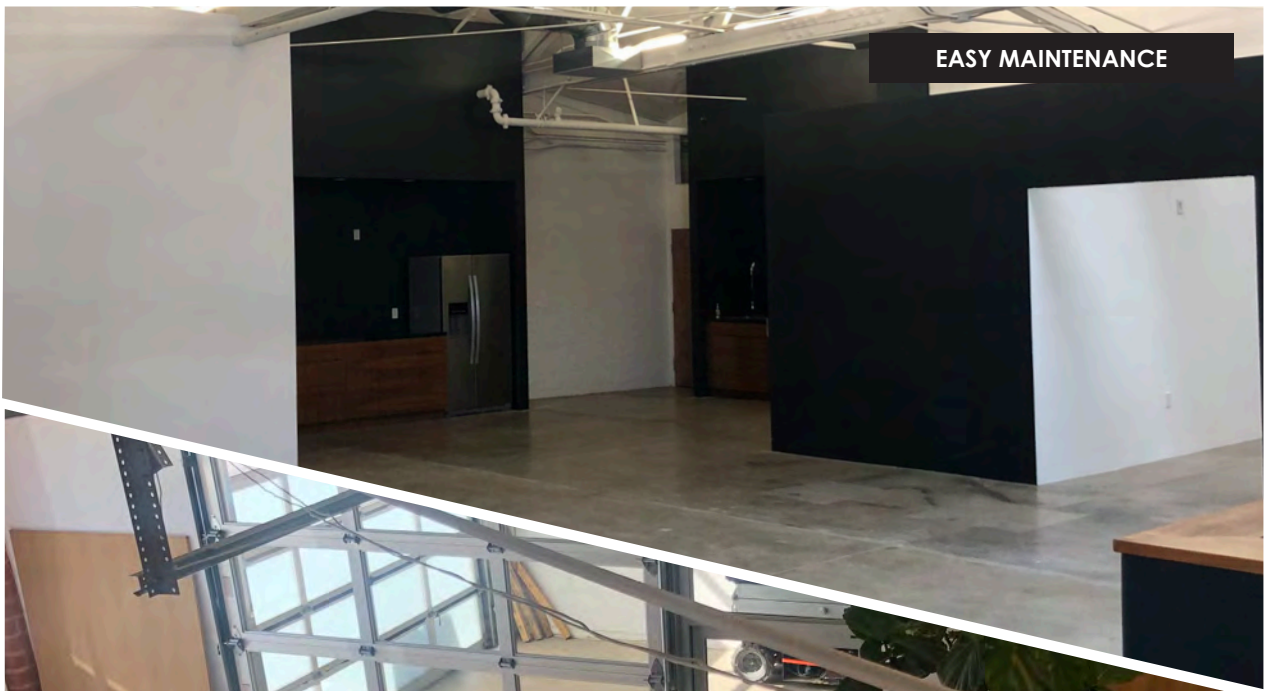
IMANI MCMILLAN

P: 213.270.2230

imcmillan@daumcre.com

CA License #02057115

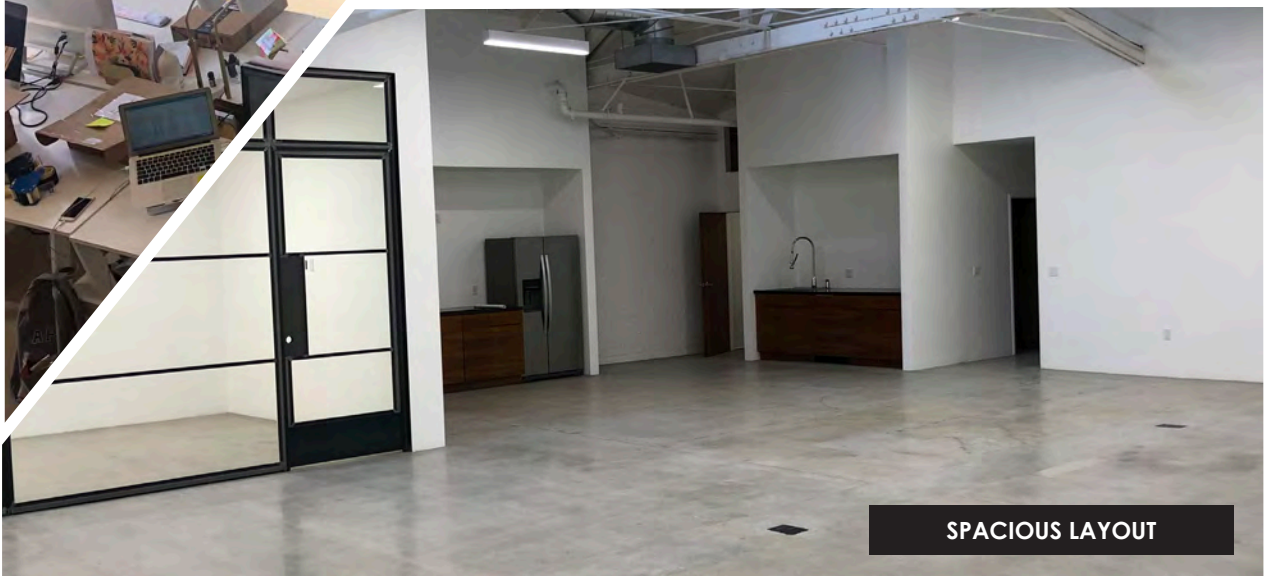
D/AQ Corp. #01129558. Maps Courtesy ©Google & ©Microsoft. Although all information is furnished regarding for sale, rental or financing is from sources deemed reliable, such information has not been verified and no express representation is made nor is any to be implied as to the accuracy thereof, and it is submitted subject to errors, omissions, changes of price, rental or other conditions, prior sale, lease or financing, or withdrawal without notice.



EASY MAINTENANCE



MULTIPLE ACCESS POINTS



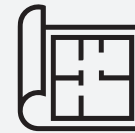
SPACIOUS LAYOUT

FOR LEASE EASTHAM WARNER

**CREATIVE OFFICE IS GREAT
FOR UNPRECEDENTED TIMES**

Eastham/Warner offers unique office layouts that allows for a more flexible implementation of security measures as the economy begins to reopen.

SPACIOUS LAYOUT



Eastham/Warner offers a flexible configuration that is perfect for reopening your offices in a creative way. The mix of private offices, conference rooms and large open works areas allows for social distancing rather than your traditional cubicles.



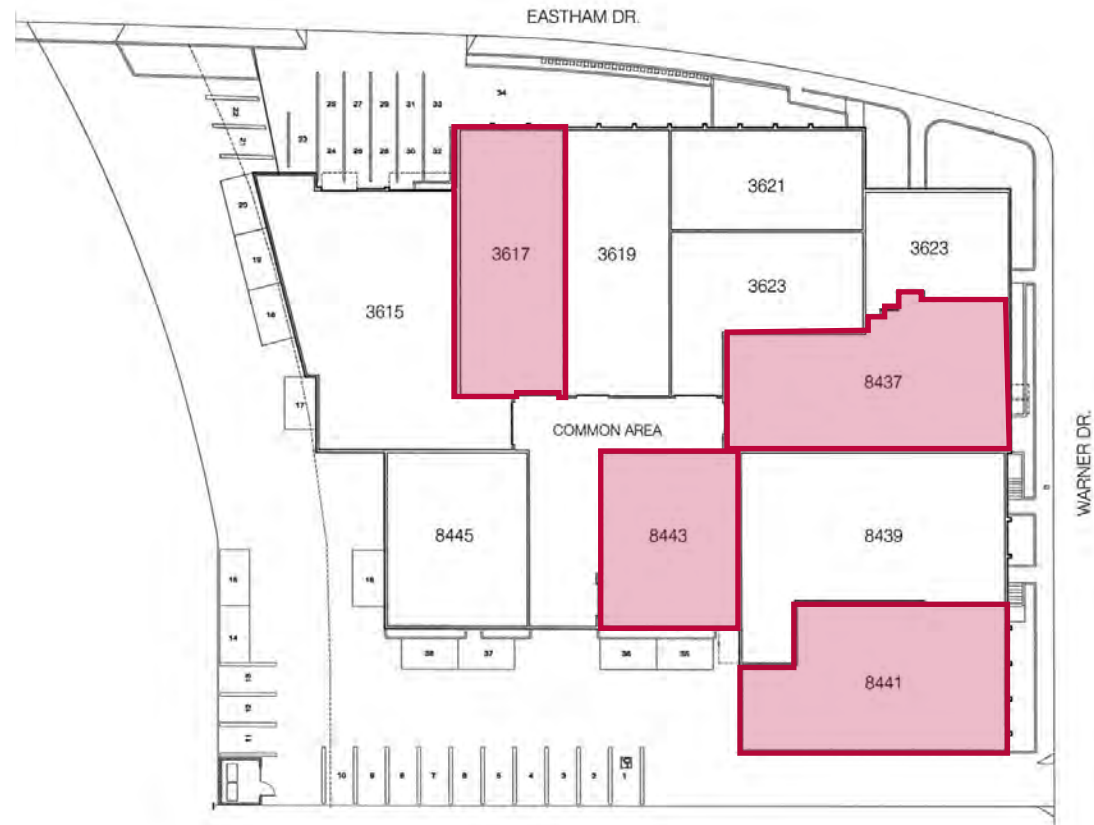
EASY MAINTENANCE

Traditional offices usually are shared amongst many tenants. Eastham/Warner offers space that is specific to your company which allows you to have full control over access, cleaning and any potential challenges. Being that we are offering a single tenant space this also allows for less foot-traffic that occurs in your traditional offices.

FOR LEASE EASTHAM WARNER

PROPERTY HIGHLIGHTS

- HVAC in Suite
- Skylights
- Polished Concrete Floors
- Exposed Bow Truss Ceiling
- Glass Roll-Up Doors
- Ideal for Editing, Special Effects, Advertising and Post Production
- Large Common Area
- Parking: \$180 per space per month on site
- Kitchen in Suite
- Light Rail Stop at Washington & National



DAVID FREITAG
P: 213.270.2235
dfreitag@daumcre.com
CA License #00855673

IMANI MCMILLAN
P: 213.270.2230
imcmillan@daumcre.com
CA License #02057115


COMMERCIAL REAL ESTATE SERVICES

D/AQ Corp. #01129558. Maps Courtesy @Google & @Microsoft. Although all information is furnished regarding for sale, rental or financing is from sources deemed reliable, such information has not been verified and no express representation is made nor is any to be implied as to the accuracy thereof, and it is submitted subject to errors, omissions, changes of price, rental or other conditions, prior sale, lease or financing, or withdrawal without notice.

ONCOR INTERNATIONAL | www.daumcommercial.com

FOR LEASE EASTHAM WARNER



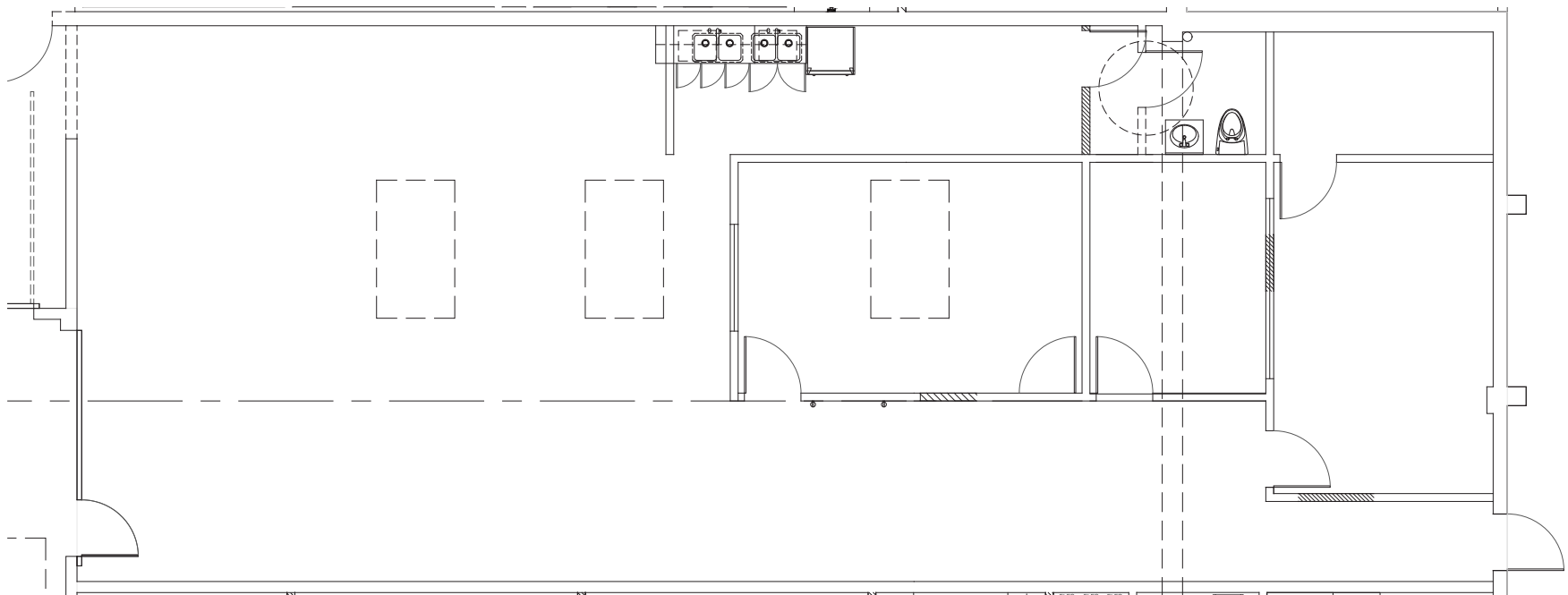
UNIT
3617



AVAILABLE
2,277 SF



TYPE
OFFICE/CREATIVE



DAVID FREITAG
P: 213.270.2235
dfreitag@daumcre.com
CA License #00855673

IMANI MCMILLAN
P: 213.270.2230
imcmillan@daumcre.com
CA License #02057115



FOR LEASE EASTHAM WARNER



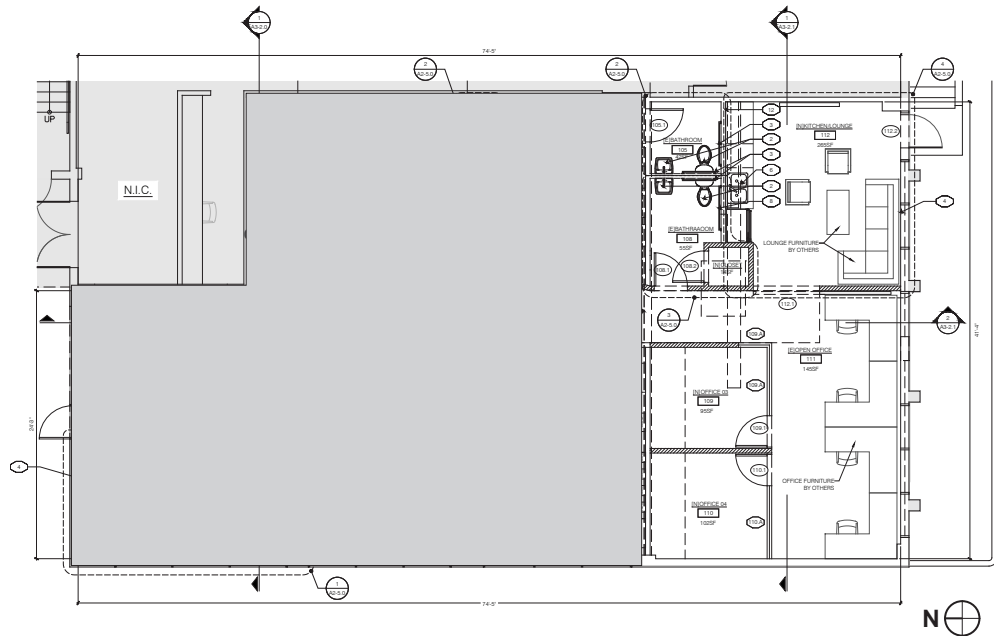
UNIT
8441



AVAILABLE
2,954 SF



TYPE
Warehouse



DAVID FREITAG
P: 213.270.2235
dfreitag@daumcre.com
CA License #00855673

IMANI MCMILLAN
P: 213.270.2230
imcmillan@daumcre.com
CA License #02057115


COMMERCIAL REAL ESTATE SERVICES

D/AQ Corp. #01129558. Maps Courtesy @Google & @Microsoft. Although all information is furnished regarding for sale, rental or financing is from sources deemed reliable, such information has not been verified and no express representation is made nor is any to be implied as to the accuracy thereof, and it is submitted subject to errors, omissions, changes of price, rental or other conditions, prior sale, lease or financing, or withdrawal without notice.
ONCOR INTERNATIONAL | www.daumcommercial.com

FOR LEASE | AVAILABLE IMMEDIATELY

EASTHAM WARNER



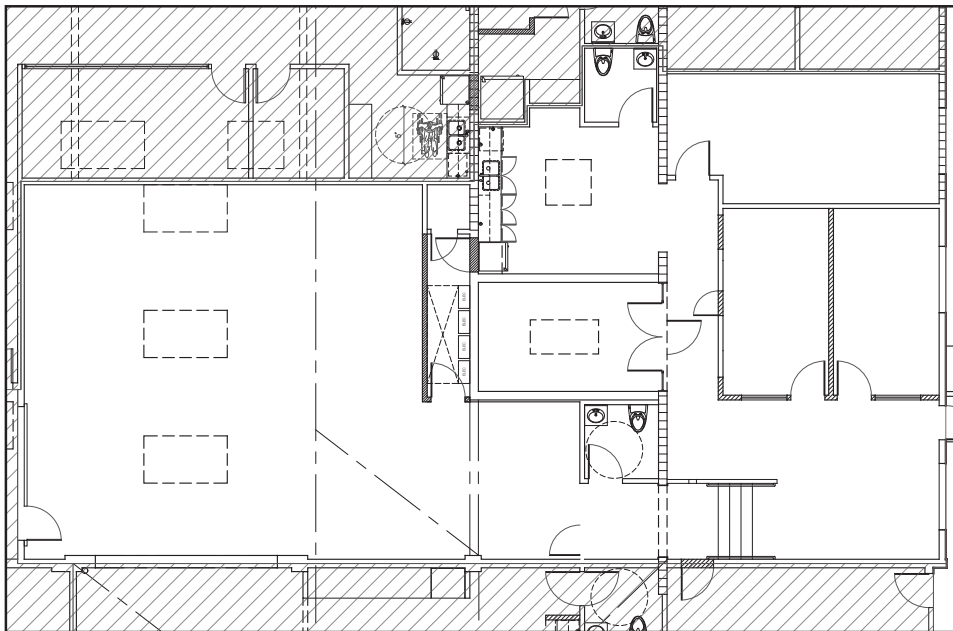
UNIT
8437



AVAILABLE
3,393 SF



TYPE
OFFICE/CREATIVE



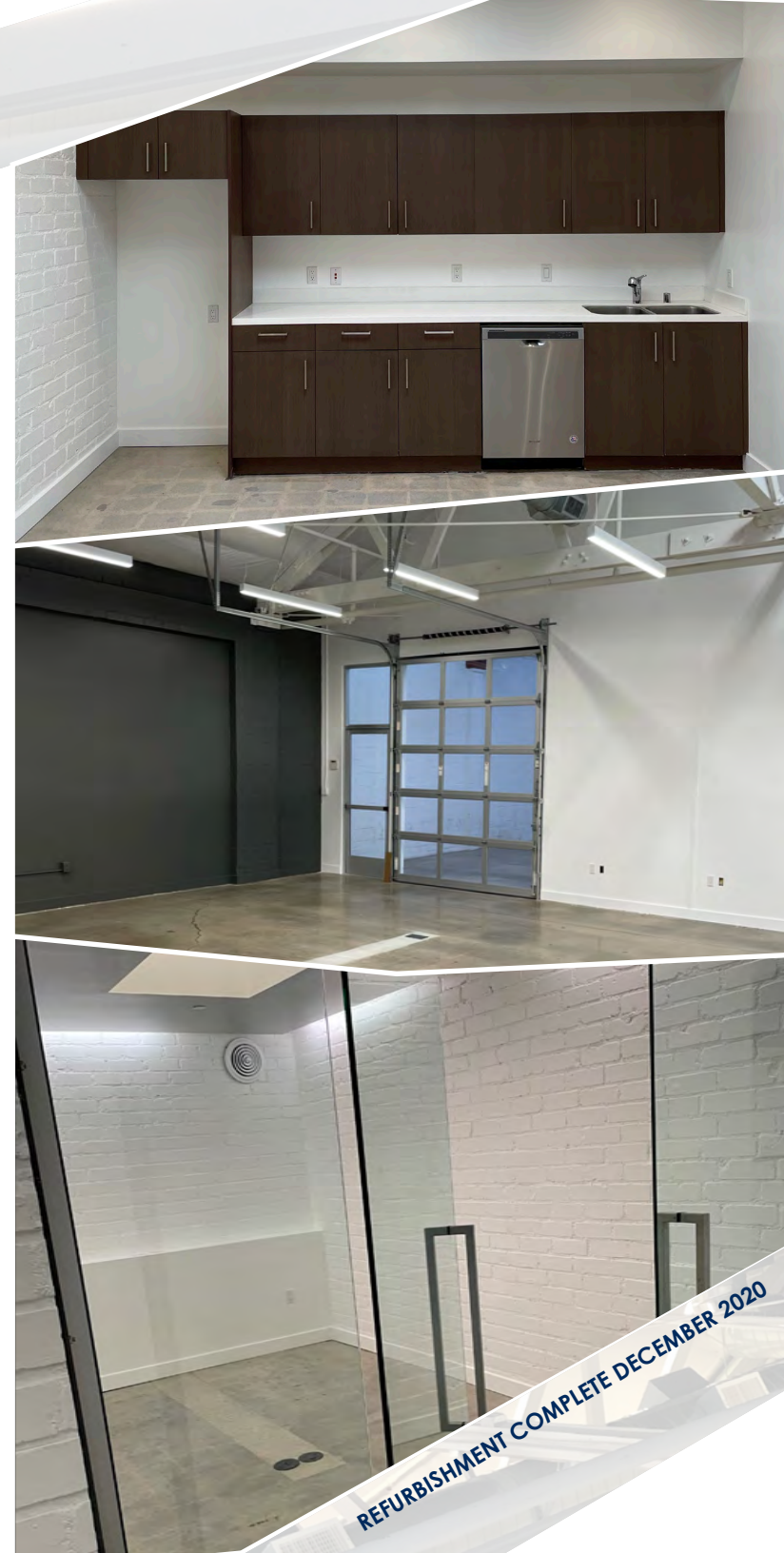
DAVID FREITAG
P: 213.270.2235
dfreitag@daumcre.com
CA License #00855673

IMANI MCMILLAN
P: 213.270.2230
imcmillan@daumcre.com
CA License #02057115



D/AQ Corp. #01129558. Maps Courtesy @Google & @Microsoft. Although all information is furnished regarding for sale, rental or financing is from sources deemed reliable, such information has not been verified and no express representation is made nor is any to be implied as to the accuracy thereof, and it is submitted subject to errors, omissions, changes of price, rental or other conditions, prior sale, lease or financing, or withdrawal without notice.

ONCOR INTERNATIONAL | www.daumcommercial.com



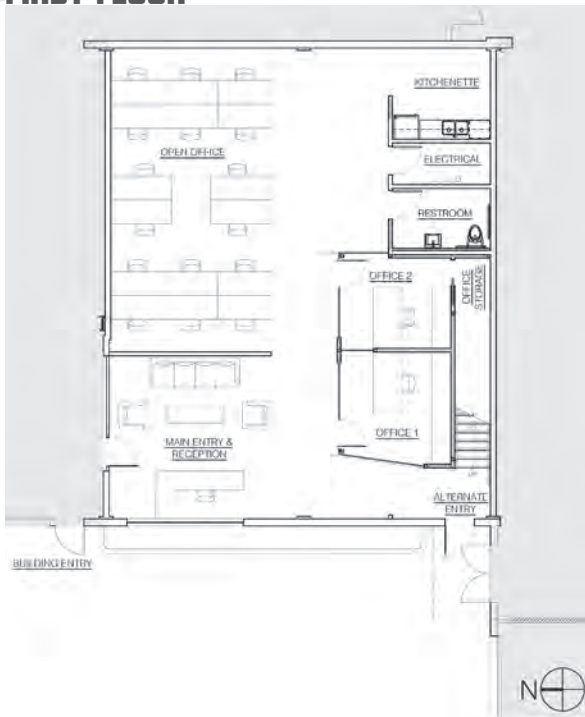
REFURBISHMENT COMPLETE DECEMBER 2020

FOR LEASE | AVAILABLE IMMEDIATELY EASTHAM WARNER

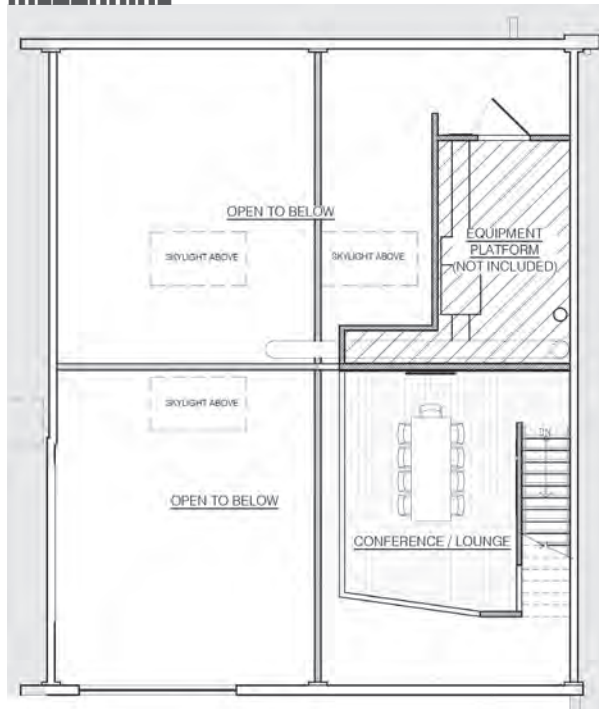


TYPE
OFFICE/CREATIVE

FIRST FLOOR



MEZZANINE



DAVID FREITAG
P: 213.270.2235
dfreitag@daumcre.com
CA License #00855673

IMANI MCMILLAN
P: 213.270.2230
imcmillan@daumcre.com
CA License #02057115



D/AQ Corp. #01129558. Maps Courtesy @Google & @Microsoft. Although all information is furnished regarding for sale, rental or financing is from sources deemed reliable, such information has not been verified and no express representation is made nor is any to be implied as to the accuracy thereof, and it is submitted subject to errors, omissions, changes of price, rental or other conditions, prior sale, lease or financing, or withdrawal without notice.

ONCOR INTERNATIONAL | www.daumcommercial.com



DOWNTOWN

WASHINGTON/NATIONAL

HELMS BAKERY DISTRICT

ARTS DISTRICT

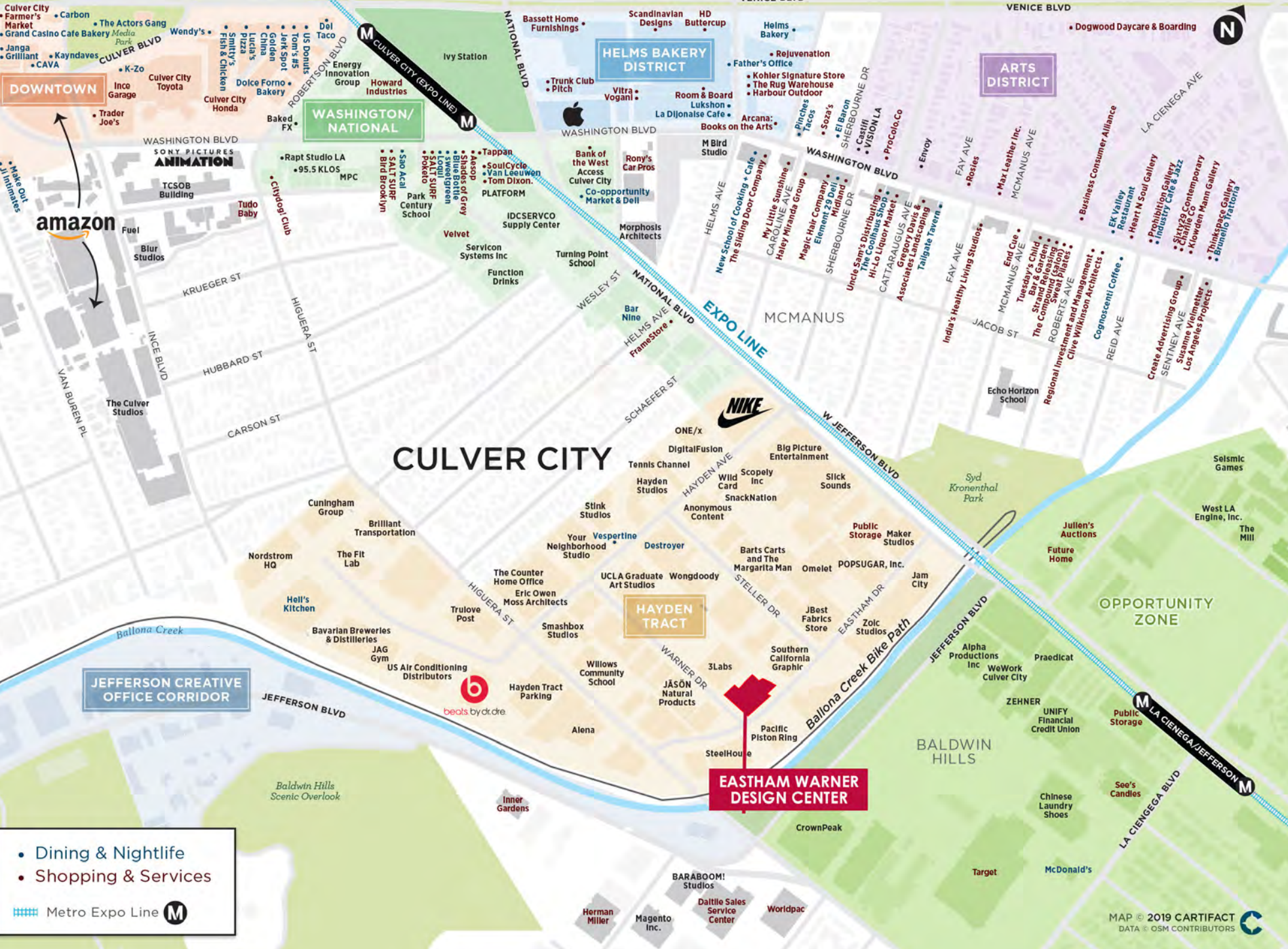
CULVER CITY

HAYDEN TRACT

EASTHAM WARNER DESIGN CENTER

JEFFERSON CREATIVE OFFICE CORRIDOR

- Dining & Nightlife
 - Shopping & Services
-  Metro Expo Line **M**



FOR LEASE

ARCHITECTURAL | CREATIVE BUILDING

EASTHAM WARNER

UNIT 3617 | 8441 | 8437 & 8443 (AVAILABLE IMMEDIATELY) | CULVER CITY | CA

DAVID FREITAG

P: 213.270.2235
dfreitag@daumcre.com
CA License #00855673

IMANI MCMILLAN

P: 213.270.2230
imcmillan@daumcre.com
CA License #02057115



D/AQ Corp. #01129558. Maps Courtesy @Google & @Microsoft. Although all information is furnished regarding for sale, rental or financing is from sources deemed reliable, such information has not been verified and no express representation is made nor is any to be implied as to the accuracy thereof, and it is submitted subject to errors, omissions, changes of price, rental or other conditions, prior sale, lease or financing, or withdrawal without notice.

ONCOR INTERNATIONAL | www.daumcommercial.com