



950

W. CENTRAL AVE., UNIT C
BREA | CA



6,003 SF FOR LEASE INDUSTRIAL CONDOMINIUM

PROPERTY HIGHLIGHTS

- ±2,164 SF of Office
- ±3,839 SF of Warehouse Space
- 19' Warehouse Clearance
- Fully Fire Sprinklered
- One (1) Oversized 14'x14' Ground Level Door
- 400 Amps, 120/208V (verify)
- Central Avenue Frontage
- 12 Parking Stalls (2:1 Parking In Common)
- Abundant Skylights & Warehouse Lighting
- Excellent Access to the 57 Freeway & Imperial Highway

FOR MORE INFORMATION PLEASE CONTACT:

MARK FELDGREBER
ASSOCIATE

P: 949.242.1074 | M: 714.616.6982

mark.feldgreber@daumcommercial.com
CABRE #02061982

DENNIS HOLT
VICE PRESIDENT

P: 949.242.1714 | M: 714.423.0169

dennis.holt@daumcommercial.com
CABRE #01948978

Although all information is furnished regarding for sale, rental or financing is from sources deemed reliable, such information has not been verified and no express representation is made nor is any to be implied as to the accuracy thereof, and it is submitted subject to errors, omissions, changes of price, rental or other conditions, prior sale, lease or financing, or withdrawal without notice.

DAUM
COMMERCIAL REAL ESTATE SERVICES

950

W. CENTRAL AVE., UNIT C
BREA | CA

FOR LEASE
INDUSTRIAL CONDO

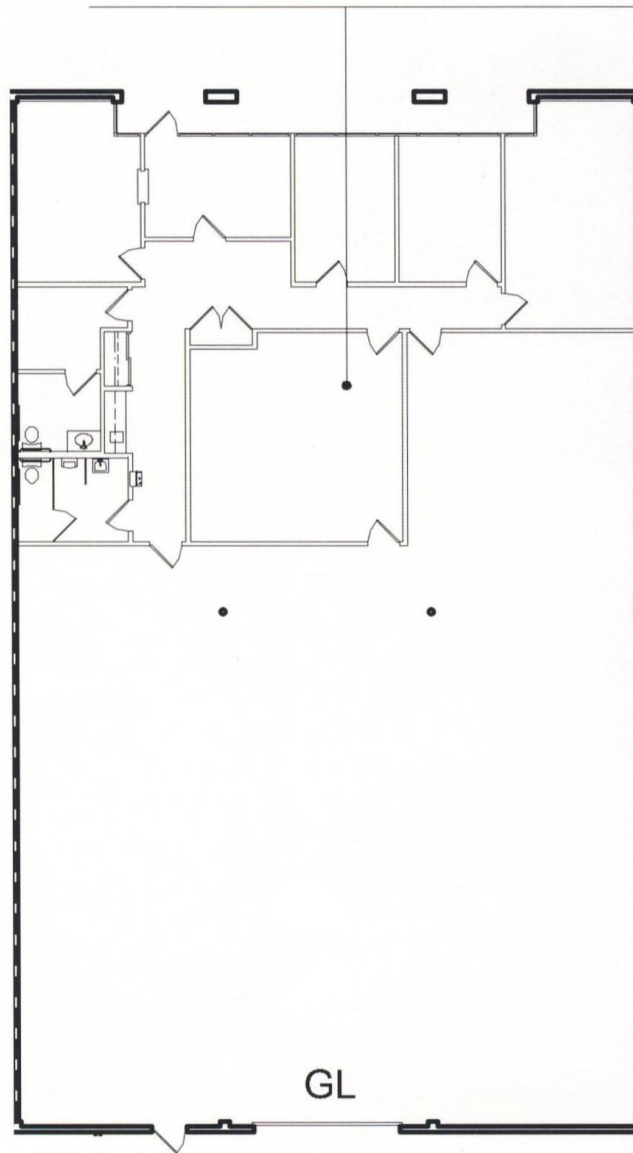
(Not to Scale)

SUITE C

OFFICE: 2,164 SQ. FT.

WAREHOUSE: 3,839 SQ. FT.

TOTAL: 6,003 SQ. FT.



Although all information is furnished regarding for sale, rental or financing is from sources deemed reliable, such information has not been verified and no express representation is made nor is any to be implied as to the accuracy thereof, and it is submitted subject to errors, omissions, changes of price, rental or other conditions, prior sale, lease or financing, or withdrawal without notice.

950

W. CENTRAL AVE., UNIT C
BREA | CA

FOR LEASE

INDUSTRIAL CONDO



Although all information is furnished regarding for sale, rental or financing is from sources deemed reliable, such information has not been verified and no express representation is made nor is any to be implied as to the accuracy thereof, and it is submitted subject to errors, omissions, changes of price, rental or other conditions, prior sale, lease or financing, or withdrawal without notice.

 **DAUM**
COMMERCIAL REAL ESTATE SERVICES