



**MULTI-PURPOSE BUILDING / CREATIVE OFFICE / INDUSTRIAL**

**FOR LEASE 13,276 SF**

LOS ANGELES

**2300**

CALIFORNIA

**EAST ELEVENTH STREET**

**DAVID FREITAG**

P: 213.270.2235  
dfreitag@daumcre.com  
CA License #00855673

**IMANI MCMILLAN**

P: 213.270.2230  
imcmillan@daumcre.com  
CA License #02057115

D/AQ Corp. #01129558. Maps Courtesy ©Google & ©Microsoft. Although all information is furnished regarding for sale, rental or financing is from sources deemed reliable, such information has not been verified and no express representation is made nor is any to be implied as to the accuracy thereof, and it is submitted subject to errors, omissions, changes of price, rental or other conditions, prior sale, lease or financing, or withdrawal without notice.



FOR LEASE **EAST ELEVENTH STREET** LA | CA

1. THE ROW DTLA
2. ROLLING GREENS
3. WARNER MUSIC GROUP
4. SOHO HOUSE
5. VIRGIN HYPERLOOP ONE
6. AI ART HOUSE
7. THE HUNTSMAN

8. GUESS HEADQUARTERS
9. BLUE STAR DINER
10. 1700 S. SANTA FE CREATIVE OFFICE CAMPUS
11. KNUPP GALLERY LA
12. NIGHT GALLERY
13. GHEBALY GALLERY

# STREET



**13,276 SF**  
BUILDING SIZE



**YES**  
SPRINKLERS



**14'**  
CEILING HEIGHT



**20**  
PARKING SPACES



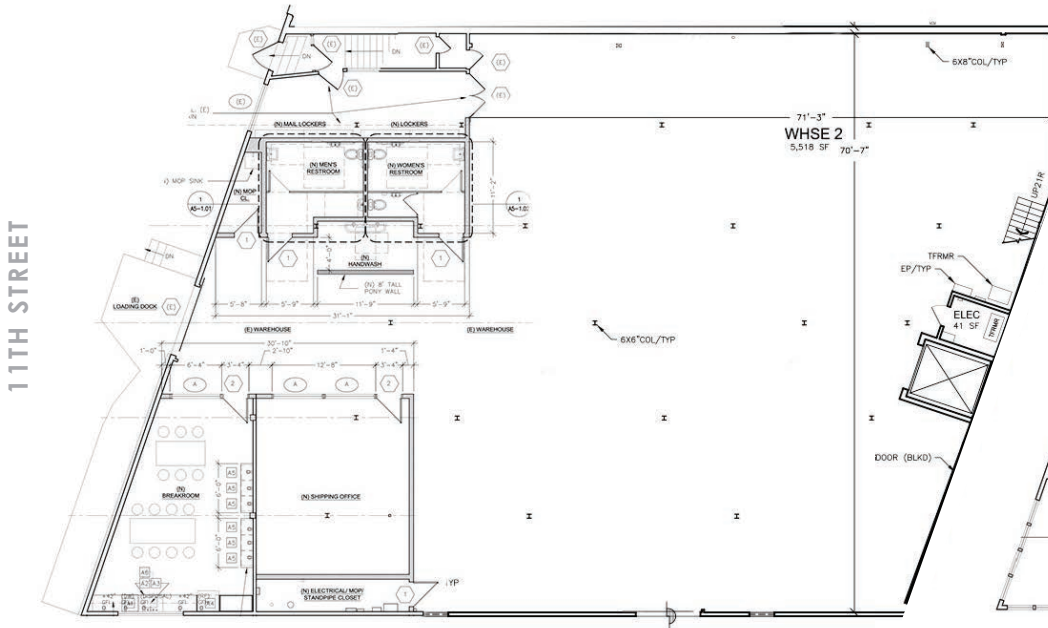
**POL**  
BUILDING 33,372



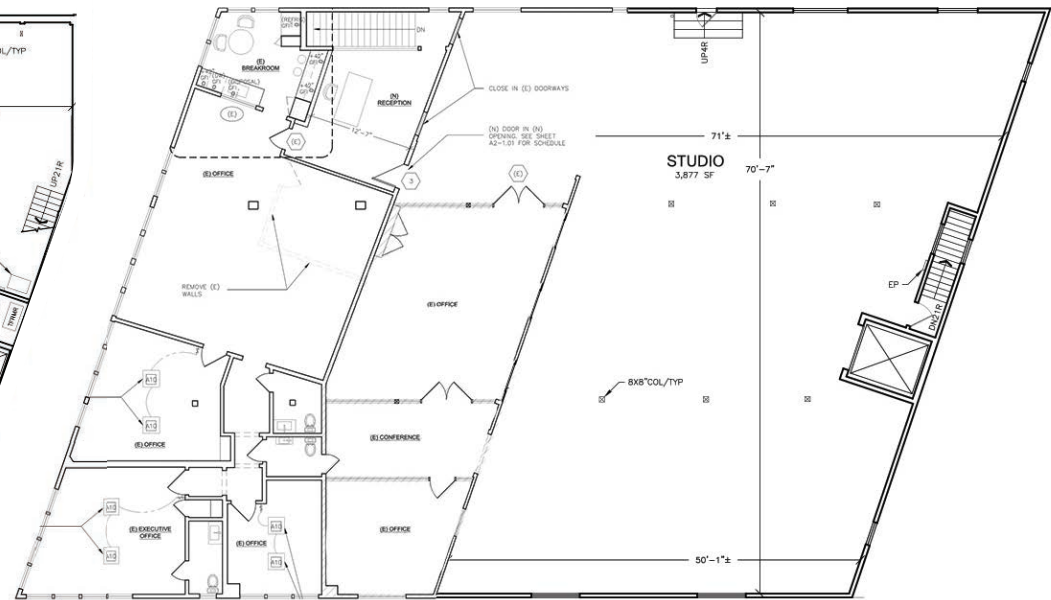
**M2**  
ZONING

- Many Great Applications Including Design Studio, Showroom, Gallery and Creative Office
- Close Proximity to Arts District, and Four (4) Freeways: 10, 5, 101 and 60
- Abundant Natural Light
- Second Floor Creative Office/Design Space is Fully Air Conditioned
- Completely Renovated August 2020

# FLOOR PLANS



**ENTRY LEVEL FLOOR PLAN**

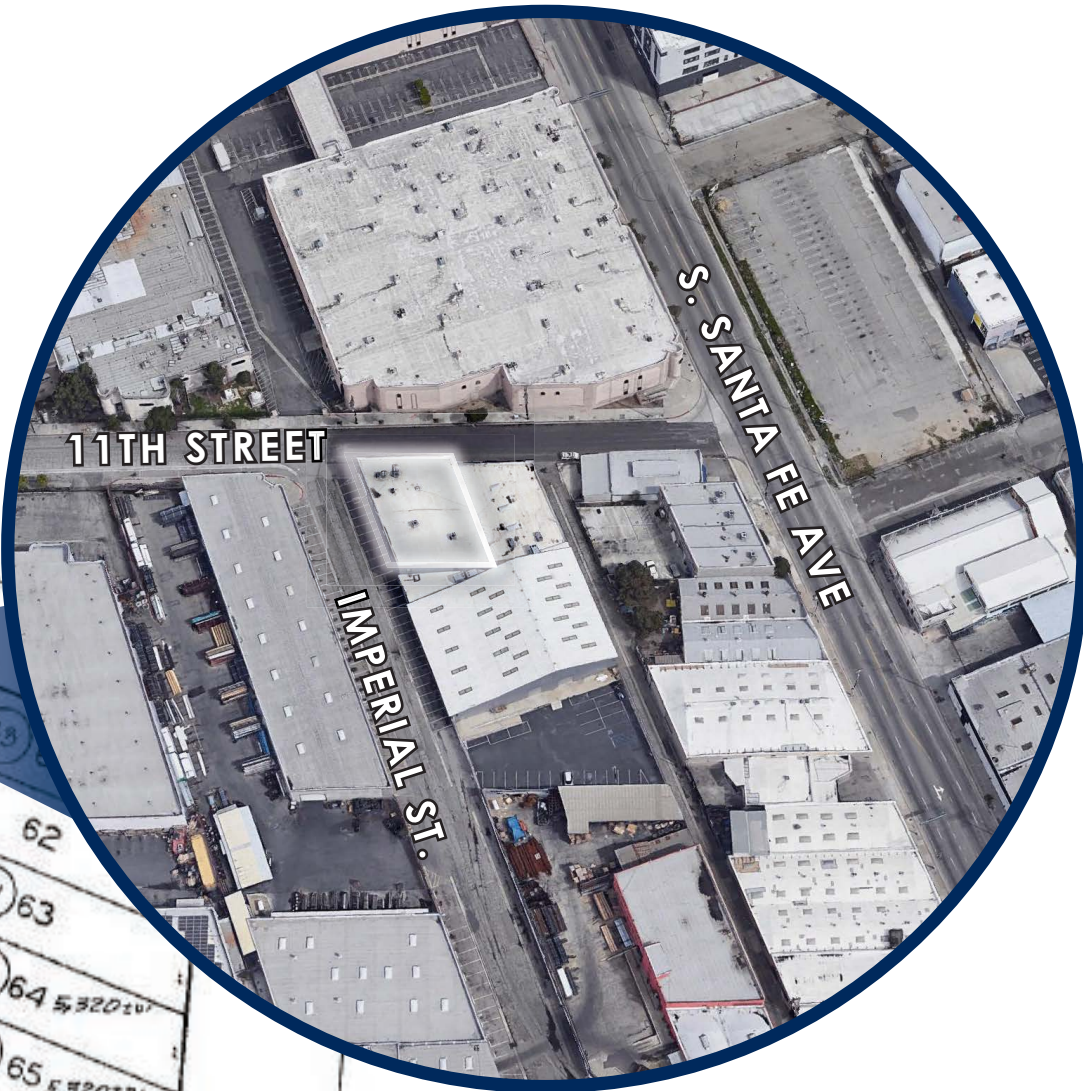
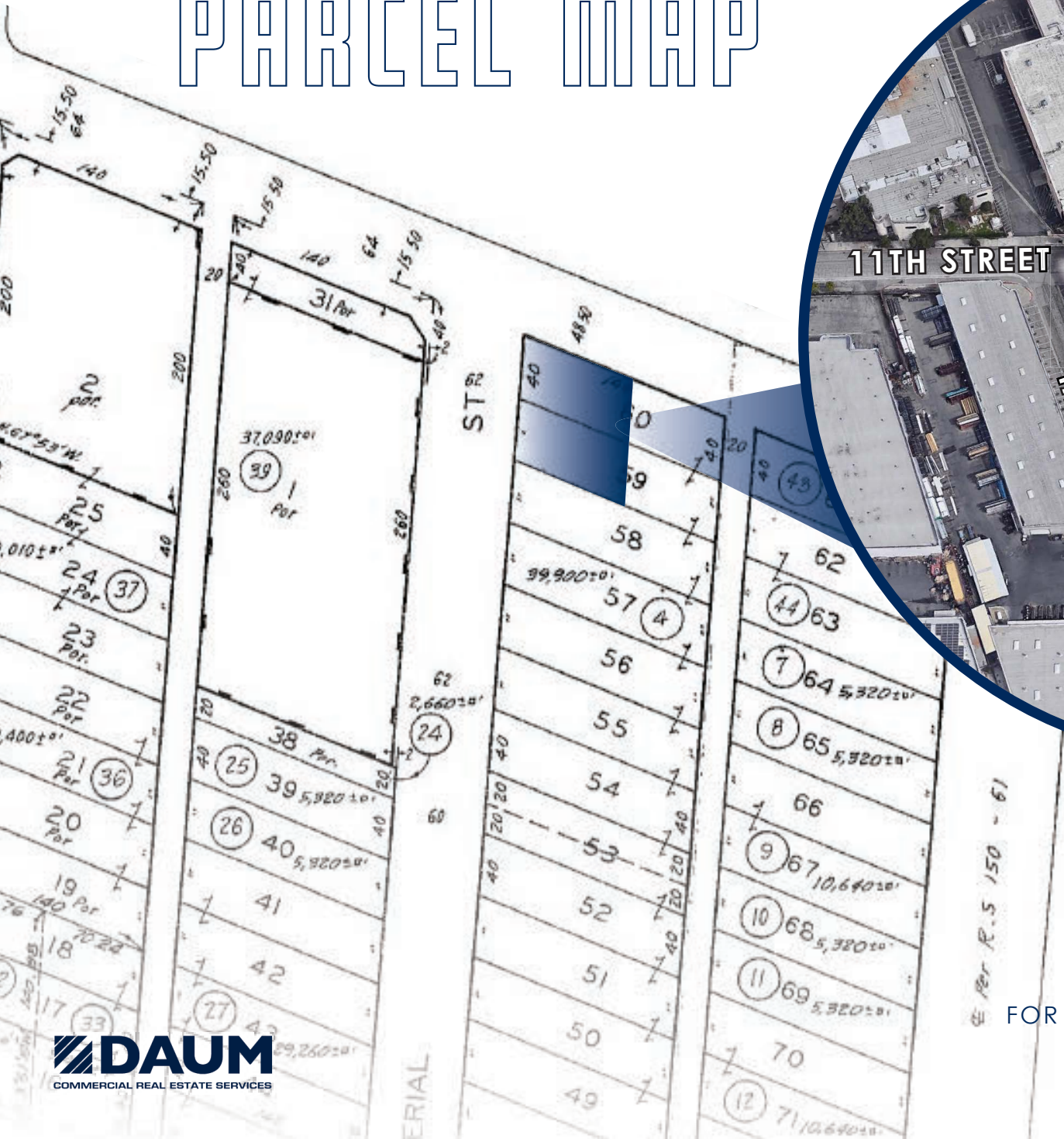


**SECOND FLOOR CREATIVE OFFICE SPACE/DESIGN**

\*NOT TO SCALE

IMPERIAL STREET

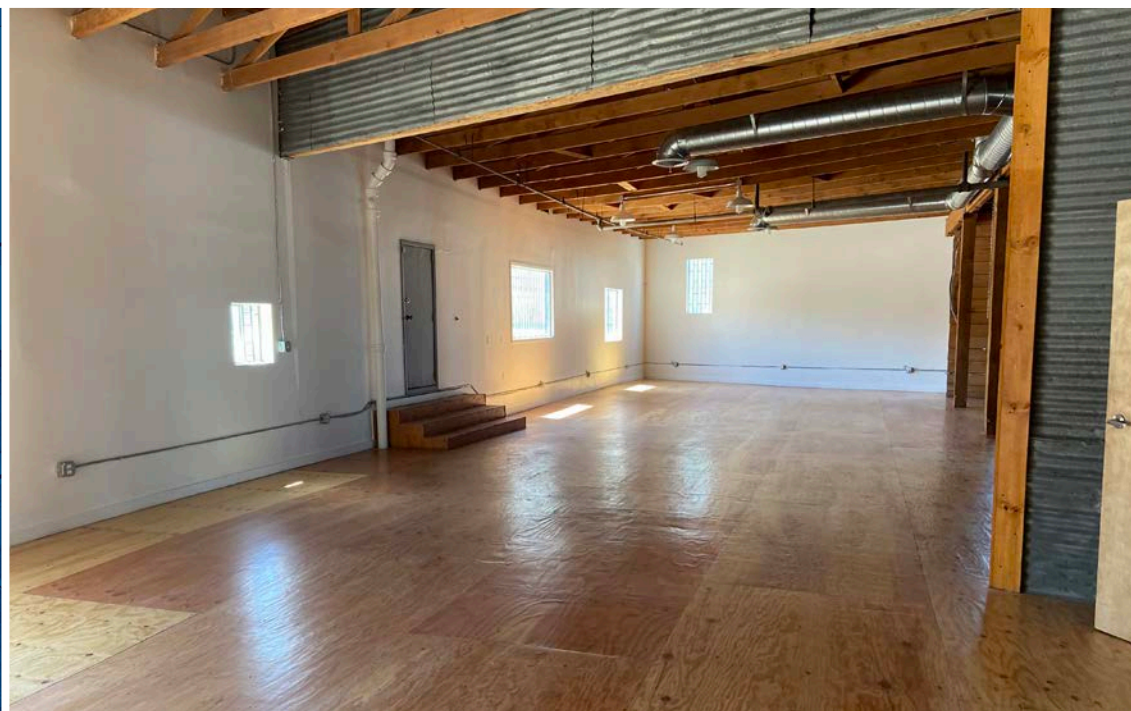
# PARCEL MAP

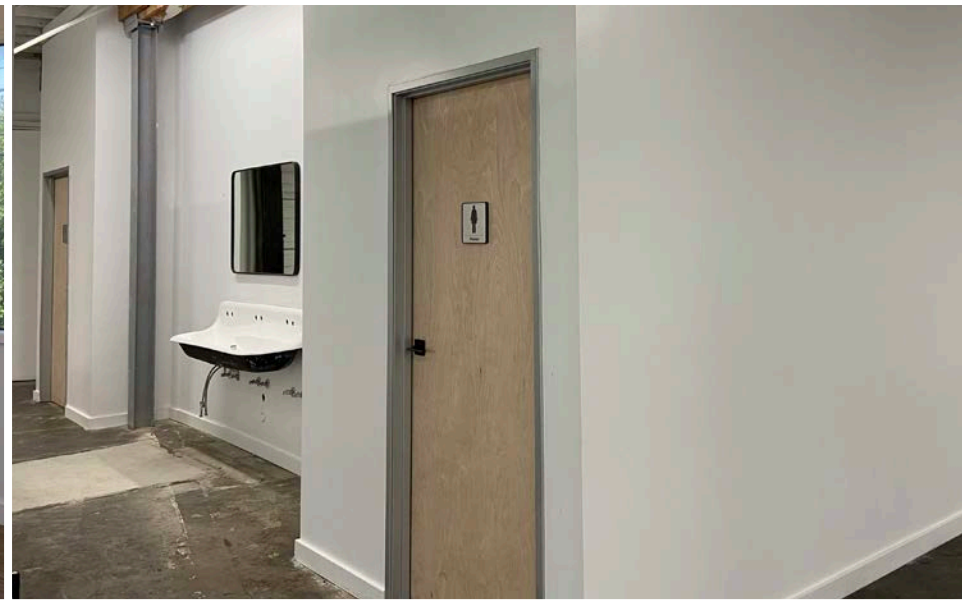




FOR LEASE **EAST ELEVENTH STREET** LA | CA

**DAUM**  
COMMERCIAL REAL ESTATE SERVICES





**DAUM**  
COMMERCIAL REAL ESTATE SERVICES

FOR LEASE **EAST ELEVENTH STREET LA | CA**

MULTI-PURPOSE BUILDING / CREATIVE OFFICE / INDUSTRIAL

FOR LEASE 13,276 SF

LOS ANGELES

2300

CALIFORNIA

EAST ELEVENTH STREET

**DAVID FREITAG**

P: 213.270.2235

dfreitag@daumcre.com

CA License #00855673

**IMANI MCMILLAN**

P: 213.270.2230

imcmillan@daumcre.com

CA License #02057115

 **DAUM**  
COMMERCIAL REAL ESTATE SERVICES

D/AQ Corp. #01129558. Maps Courtesy @Google & @Microsoft. Although all information is furnished regarding for sale, rental or financing is from sources deemed reliable, such information has not been verified and no express representation is made nor is any to be implied as to the accuracy thereof, and it is submitted subject to errors, omissions, changes of price, rental or other conditions, prior sale, lease or financing, or withdrawal without notice.

ONCOR INTERNATIONAL | [www.daumcommercial.com](http://www.daumcommercial.com)