



**APPROXIMATELY 14,163 SF AVAILABLE ON 1.98 ACRES**

**1297**

W. 9TH ST.  
UPLAND | CA

## FOR LEASE

FOR MORE INFORMATION PLEASE CONTACT:

**ERIC BURNEY**

**EXECUTIVE VICE PRESIDENT**

**P: 909.652.9051 | M: 909.560.4856**

[eric.burney@daumcommercial.com](mailto:eric.burney@daumcommercial.com)

CABRE #00697556

Although all information is furnished regarding for sale, rental or financing is from sources deemed reliable, such information has not been verified and no express representation is made nor is any to be implied as to the accuracy thereof, and it is submitted subject to errors, omissions, changes of price, rental or other conditions, prior sale, lease or financing, or withdrawal without notice.

# FOR LEASE

14,163 SF ON 1.98 ACRES

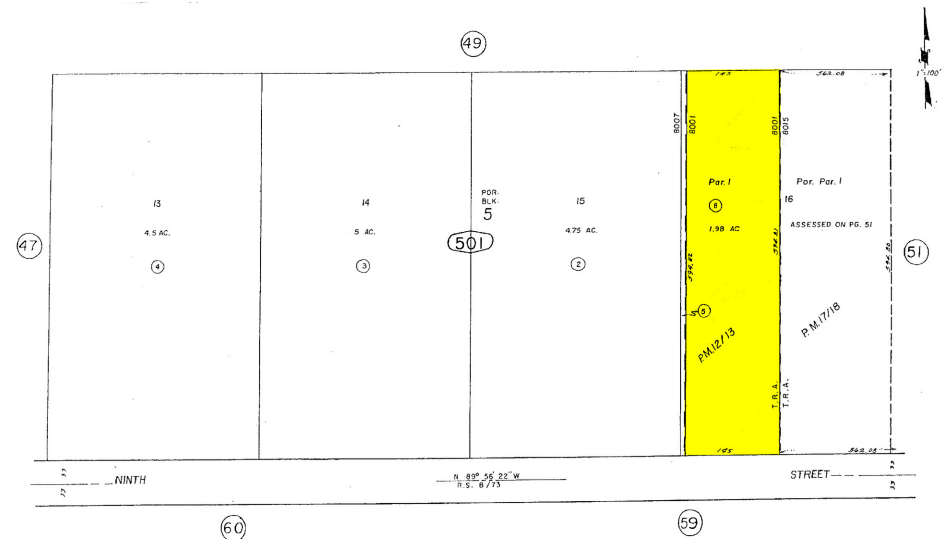
# 1297

W. 9TH ST.  
UPLAND | CA



## PROPERTY HIGHLIGHTS

- 14,163 SF Available
- Approximately 1.98 Acres
- 6,000 SF High Quality Office Space
- 25' Plus Clearance (verify)
- ML Zoning - Allows Most Industrial Uses (verify)
- 600 Amps, 120/240V Power (verify)
- CALL FOR APPOINTMENT TO SHOW



**ERIC BURNEY**  
EXECUTIVE VICE PRESIDENT

P: 909.652.9051 | M: 909.560.4856  
eric.burney@daumcommercial.com  
CABRE #00697556



# FOR LEASE

14,163 SF ON 1.98 ACRES

# 1297

W. 9TH ST.  
UPLAND | CA



**ERIC BURNEY**  
EXECUTIVE VICE PRESIDENT

P: 909.652.9051 | M: 909.560.4856  
eric.burney@daumcommercial.com  
CABRE #00697556

Although all information is furnished regarding for sale, rental or financing is from sources deemed reliable, such information has not been verified and no express representation is made nor is any to be implied as to the accuracy thereof, and it is submitted subject to errors, omissions, changes of price, rental or other conditions, prior sale, lease or financing, or withdrawal without notice.