



# 1302

W GAYLORD ST.  
LONG BEACH | CA



## FOR LEASE 8,624 SF INDUSTRIAL PROPERTY

### PROPERTY HIGHLIGHTS

- 800 Amps, 480 V, 3Ph Power
- 3 GL Loading
- Corner Location
- Measure MMJ, Cannabis Approved Zoning
- Small Secured Yard Possible
- 1,200 SF Office Space

FOR MORE INFORMATION PLEASE CONTACT:

**CHARLIE WINN**

VICE PRESIDENT

P: 949.242.1715 | M: 714.271.2963

charlie.winn@daumcommercial.com

CABRE #01151176

**CRAIG SULLIVAN**

VICE PRESIDENT

P: 949.242.1710

craig.sullivan@daumcommercial.com

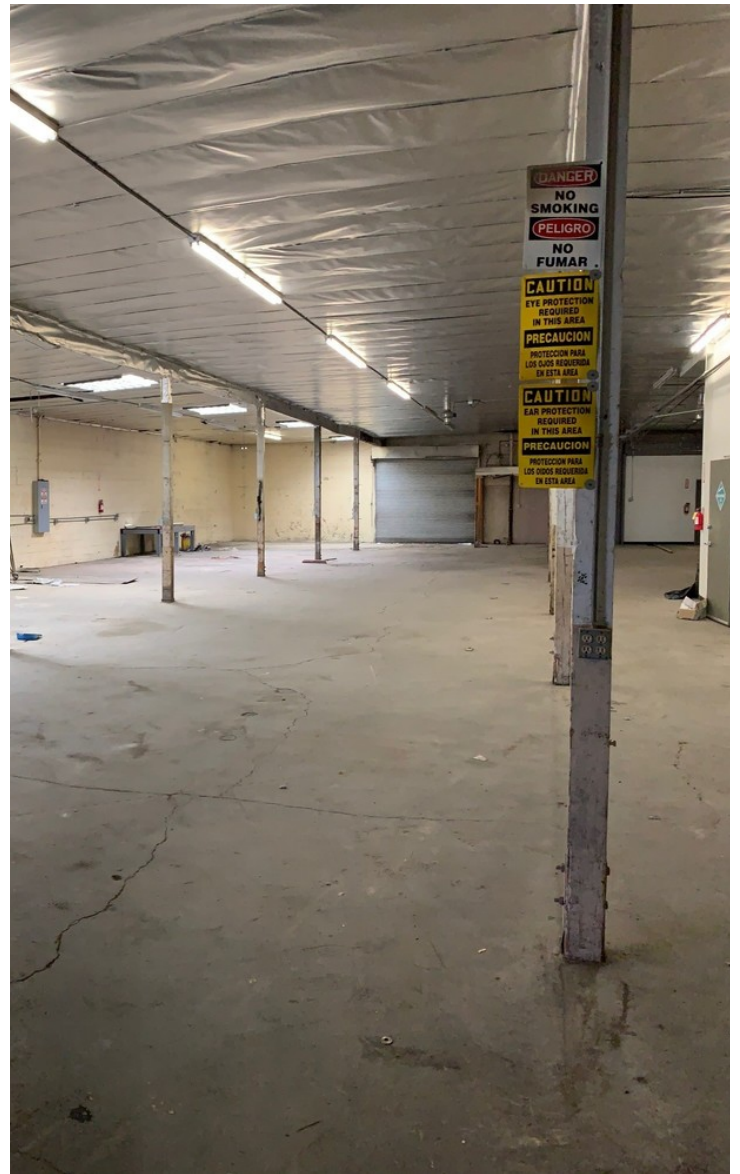
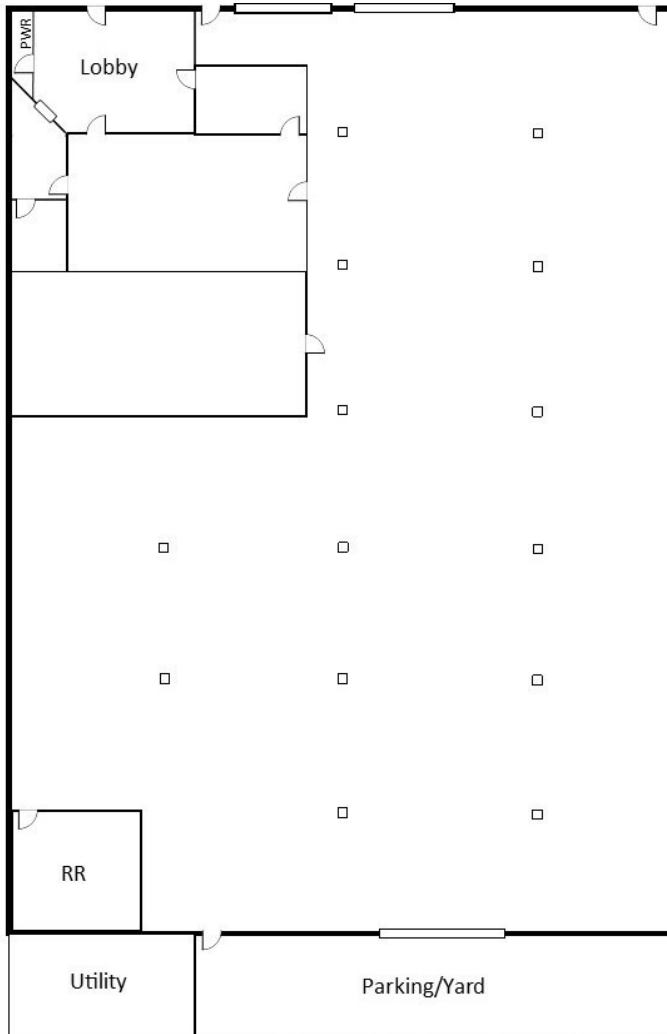
CABRE #01323421

Although all information is furnished regarding for sale, rental or financing is from sources deemed reliable, such information has not been verified and no express representation is made nor is any to be implied as to the accuracy thereof, and it is submitted subject to errors, omissions, changes of price, rental or other conditions, prior sale, lease or financing, or withdrawal without notice.

**DAUM**  
COMMERCIAL REAL ESTATE SERVICES

1302 W GAYLORD ST.  
LONG BEACH | CA

**FOR LEASE**  
INDUSTRIAL PROPERTY



Although all information is furnished regarding for sale, rental or financing is from sources deemed reliable, such information has not been verified and no express representation is made nor is any to be implied as to the accuracy thereof, and it is submitted subject to errors, omissions, changes of price, rental or other conditions, prior sale, lease or financing, or withdrawal without notice.