

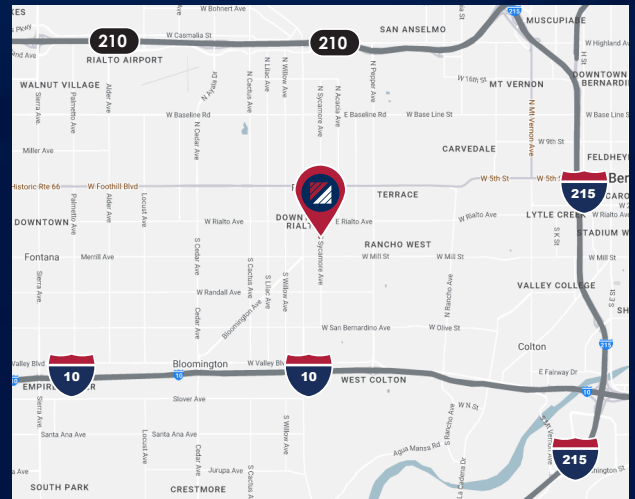
FOR LEASE

±6,000 SF AVAILABLE

300-322 S. SYCAMORE AVE. | RIALTO, CA

PROPERTY HIGHLIGHTS

- ±6,000 SF Available
- ±2,500 SF Office
- Two (2) Restrooms
- One (1) 10' x 12' and One (1) 10' x 10' GL Doors
- 16' Clear Height
- ± 1,500 SF Flex-Use Shop Area
- ± 1,000 SF Drop Storage Area
- Possible Multi-Tenant Property



FOR MORE INFORMATION, PLEASE CONTACT:

NOAH SAMARIN

EVP | PRINCIPAL
P: 909.912.0007 | M: 714.812.1289
noah.samarin@daumcommercial.com
CADRE #01755814

ABRAHAM MENDOZA

ASSOCIATE
P: 909.980.7099
amendoza@daumcommercial.com
CADRE #02138284

NICK CANTU

ASSOCIATE VICE PRESIDENT
P: 909.652.9054
ncantu@daumcommercial.com
CADRE #02016719



FOR LEASE

±6,000 SF AVAILABLE

300-322 S. SYCAMORE AVE. | RIALTO, CA



FOR MORE INFORMATION, PLEASE CONTACT:

NOAH SAMARIN

EVP | PRINCIPAL

P: 909.912.0007 | M: 714.812.1289

noah.samarin@daumcommercial.com

CADRE #01755814

ABRAHAM MENDOZA

ASSOCIATE

P: 909.980.7099

amendoza@daumcommercial.com

CADRE #02138284

NICK CANTU

ASSOCIATE VICE PRESIDENT

P: 909.652.9054

ncantu@daumcommercial.com

CADRE #02016719

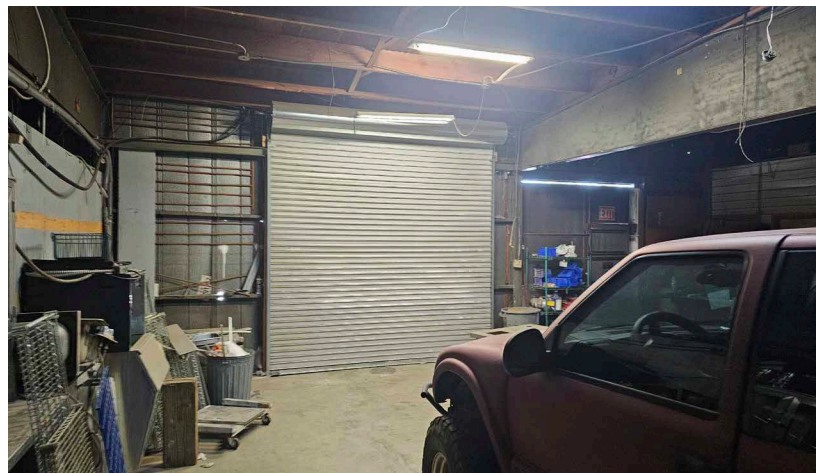
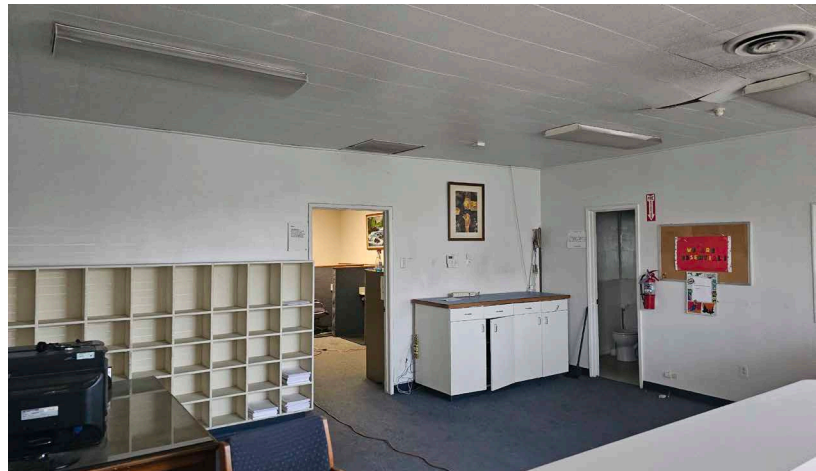
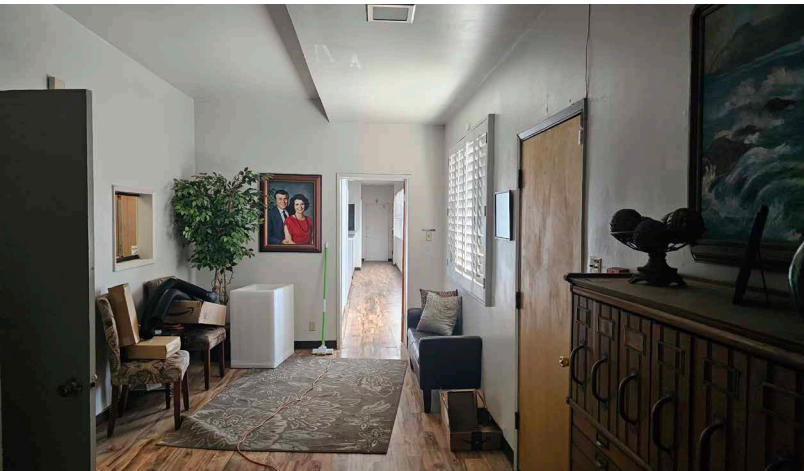
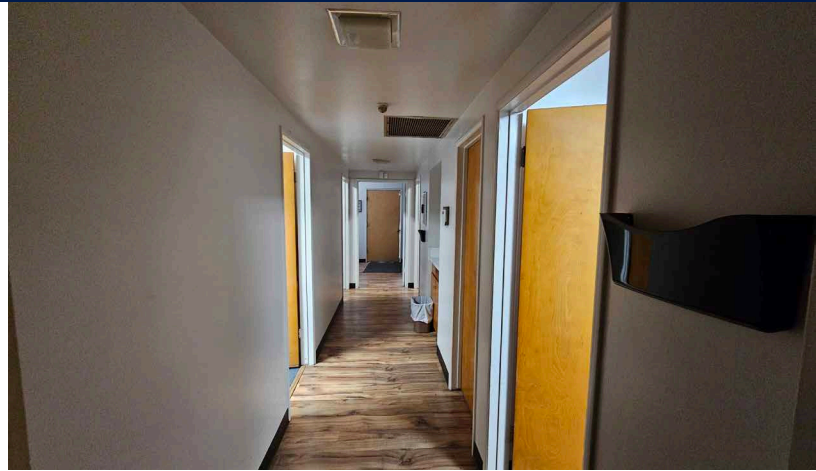
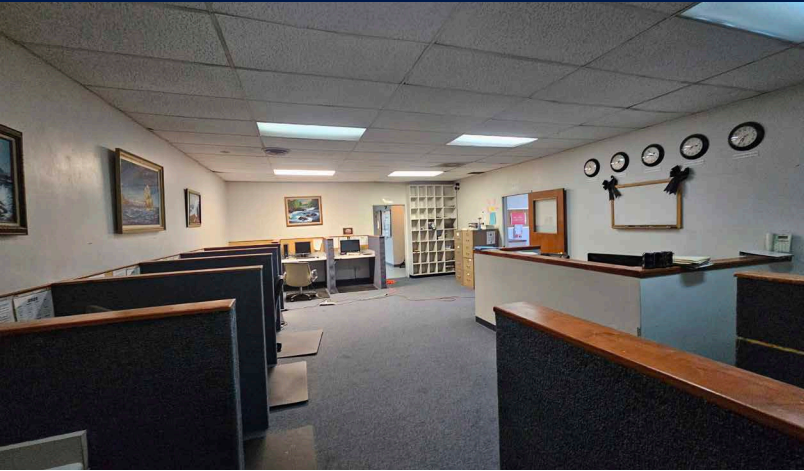


Although all information is furnished regarding for sale, rental or financing from sources deemed reliable, such information has not been verified and no express representation is made nor is any to be implied as to the accuracy thereof, and it is submitted subject to errors, omissions, changes of price, rental or other conditions, prior sale, lease or financing, or withdrawal without notice. All Maps provided courtesy of Google Maps, Bing Maps, and Google Earth. D/AQ Corp. # 01129558

FOR LEASE

±6,000 SF AVAILABLE

300-322 S. SYCAMORE AVE. | RIALTO, CA



FOR MORE INFORMATION, PLEASE CONTACT:

NOAH SAMARIN

EVP | PRINCIPAL

P: 909.912.0007 | M: 714.812.1289

noah.samarin@daumcommercial.com

CADRE #01755814

ABRAHAM MENDOZA

ASSOCIATE

P: 909.980.7099

amendoza@daumcommercial.com

CADRE #02138284

NICK CANTU

ASSOCIATE VICE PRESIDENT

P: 909.652.9054

ncantu@daumcommercial.com

CADRE #02016719



Although all information is furnished regarding for sale, rental or financing from sources deemed reliable, such information has not been verified and no express representation is made nor is any to be implied as to the accuracy thereof, and it is submitted subject to errors, omissions, changes of price, rental or other conditions, prior sale, lease or financing, or withdrawal without notice. All Maps provided courtesy of Google Maps, Bing Maps, and Google Earth. D/AQ Corp. # 01129558

