



245-D5
FISCHER AVENUE
COSTA MESA | CA

FOR LEASE ±4,300 SF

INDUSTRIAL FLEX CONDO

FOR MORE INFORMATION PLEASE CONTACT:

DEVIN RAY

ASSOCIATE

P: 949.242.1065 | M: 714.322.1252

devin.ray@daumcommercial.com

CABRE #02018130

MIKE BARREIRO

EXECUTIVE V.P. | PRINCIPAL

P: 949.355.8500

mike.barreiro@daumcommercial.com

CABRE #01712620

Although all information is furnished regarding for sale, rental or financing is from sources deemed reliable, such information has not been verified and no express representation is made nor is any to be implied as to the accuracy thereof, and it is submitted subject to errors, omissions, changes of price, rental or other conditions, prior sale, lease or financing, or withdrawal without notice.

DAUM
COMMERCIAL REAL ESTATE SERVICES

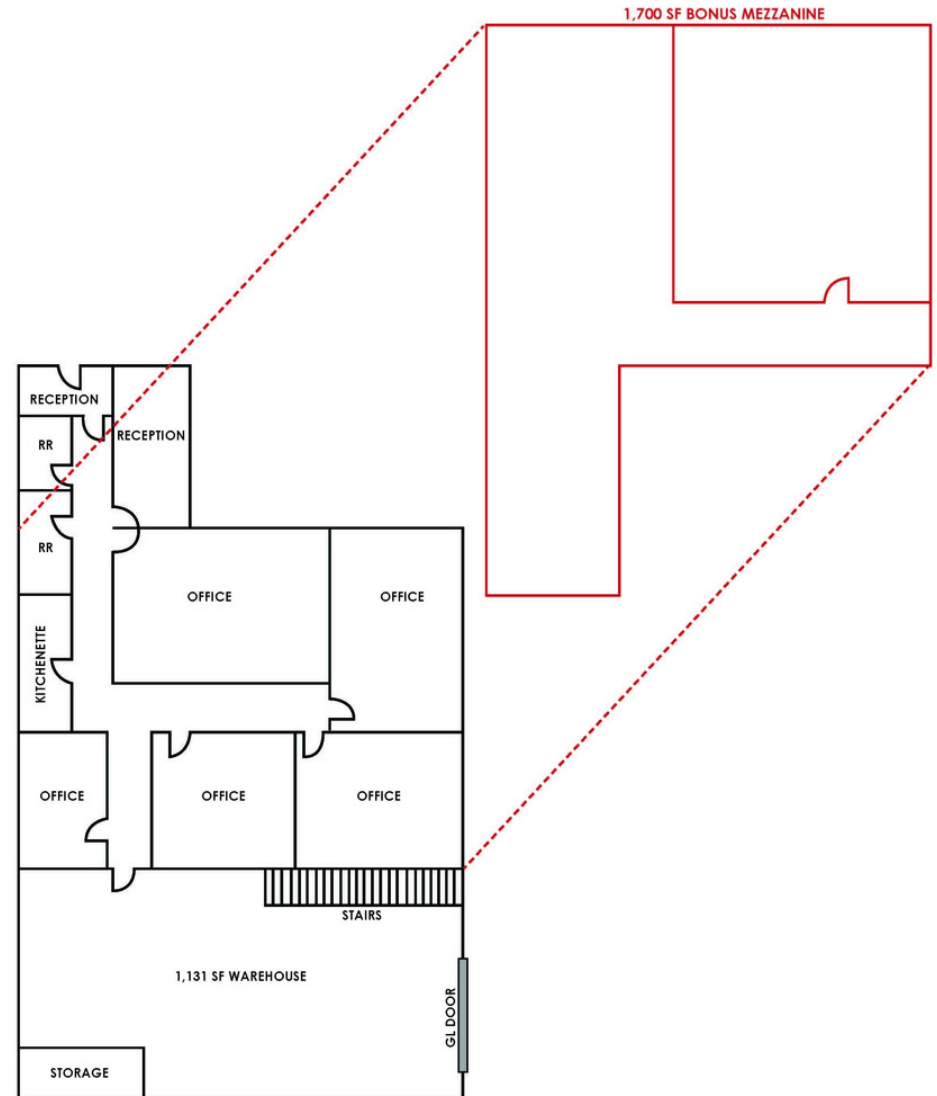
FOR LEASE ±4,300 SF

INDUSTRIAL FLEX CONDO

245-D5
FISCHER AVENUE
COSTA MESA | CA

PROPERTY HIGHLIGHTS:

- ±4,300 SF Office, Warehouse, & Mezzanine
- ±1,400 SF Office Space & ±1,200 Warehouse
- ±1,700 SF Mezzanine (Included in Total SF)
- Six (6) Newly Refurbished Offices
- End Unit, Drive Around Access
- Kitchenette & Two (2) Restrooms
- (1) 16'x14' Oversized Automatic GL Door
- Sprinklered, Air-Lines, 200 Amps (Verify)
- Prime Costa Mesa/ Airport Location
- Immediate Freeway Access (405/55/73)



DEVIN RAY
ASSOCIATE

P: 949.242.1065 | M: 714.322.1252
devin.ray@daumcommercial.com
CABRE #02018130

MIKE BARREIRO
EXECUTIVE V.P. | PRINCIPAL

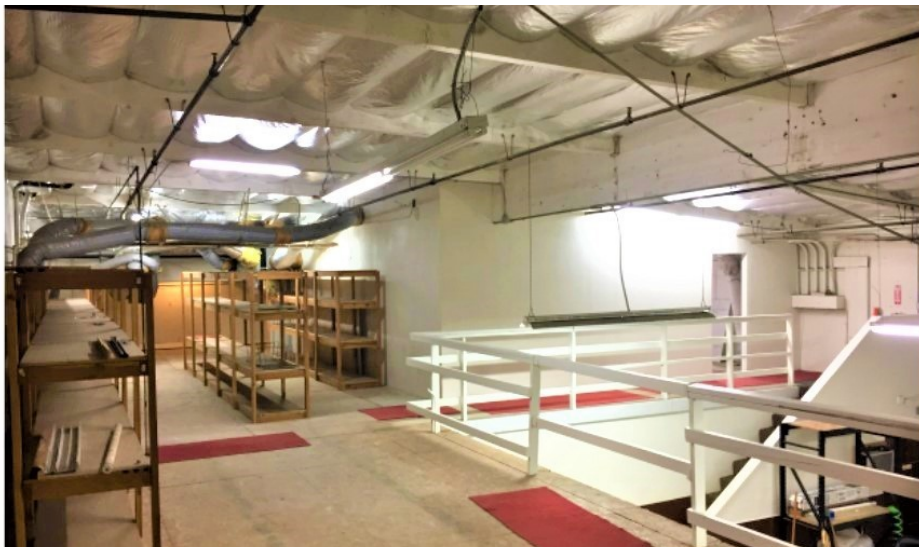
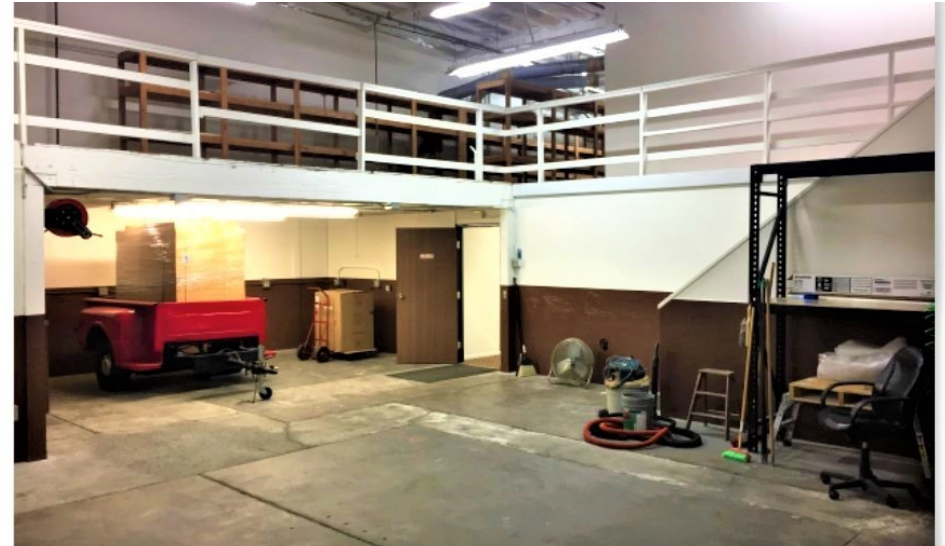
P: 949.355.8500
mike.barreiro@daumcommercial.com
CABRE #01712620

FOR LEASE ±4,300 SF

INDUSTRIAL FLEX CONDO

245-D5

FISCHER AVENUE
COSTA MESA | CA



DEVIN RAY
ASSOCIATE

P: 949.242.1065 | M: 714.322.1252
devin.ray@daumcommercial.com
CABRE #02018130

MIKE BARREIRO
EXECUTIVE V.P. | PRINCIPAL

P: 949.355.8500
mike.barreiro@daumcommercial.com
CABRE #01712620

Although all information is furnished regarding for sale, rental or financing is from sources deemed reliable, such information has not been verified and no express representation is made nor is any to be implied as to the accuracy thereof, and it is submitted subject to errors, omissions, changes of price, rental or other conditions, prior sale, lease or financing, or withdrawal without notice.