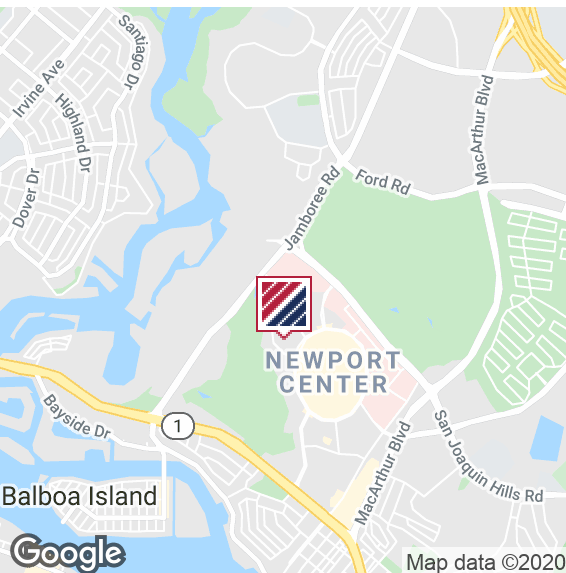




# 840

NEWPORT CENTER  
DRIVE



## FOR SUBLEASE

FIRST FLOOR OFFICE SPACE/APPROXIMATELY 1,221 SF

### PROPERTY HIGHLIGHTS

- Walking Distance to Fashion Island.
- Parking Is 4/1000.
- Sublease Term Expires September 30, 2022.
- Located in the Pacific Financial Plaza which includes The Commons an outdoor area in the heart of Newport Center ideal for connecting and collaborating.
- Numerous well-known restaurants and amenities nearby.
- Great Location.
- Close proximity to the 405 and 55 Freeways, 73 Toll Road, and John Wayne International Airport.

FOR MORE INFORMATION PLEASE CONTACT:

**DANIELLE KNUDSON**  
EXECUTIVE VICE PRESIDENT

P: 949.242.1701

danielle.knudson@daumcommercial.com

CADRE #01427328

Although all information is furnished regarding sale, rental or financing is from sources deemed reliable, such information has not been verified and no express representation is made nor is any to be implied as to the accuracy thereof, and it is submitted subject to errors, omissions, changes of price, rental or other conditions, prior sale, lease or financing, or withdrawal without notice.

**DAUM**  
COMMERCIAL REAL ESTATE SERVICES

# 840

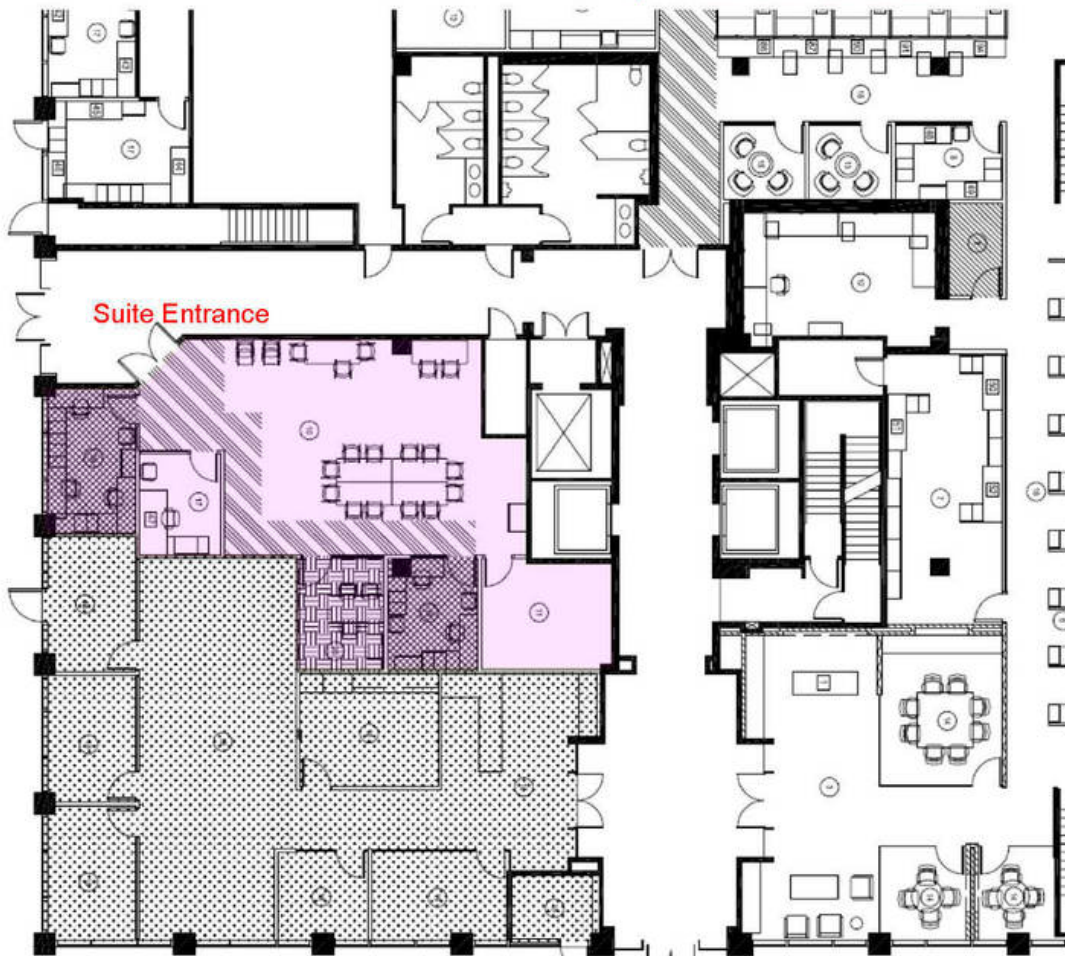
NEWPORT CENTER DRIVE  
NEWPORT BEACH | CA

# FOR SUBLEASE

OFFICE BUILDING

\* Please Note: Furniture has been removed from the space and is not included.

Side Entrance  
off Common  
Areas



Main Entrance off Parking Area

Although all information is furnished regarding for sale, rental or financing is from sources deemed reliable, such information has not been verified and no express representation is made nor is any to be implied as to the accuracy thereof, and it is submitted subject to errors, omissions, changes of price, rental or other conditions, prior sale, lease or financing, or withdrawal without notice.