



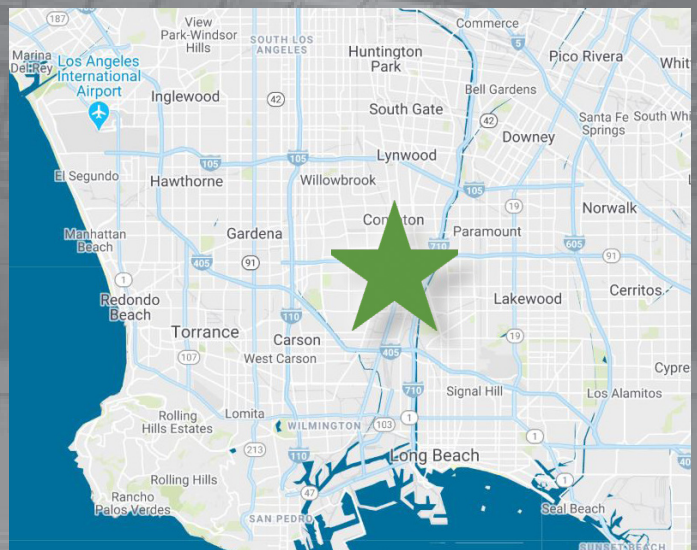
27,842 SF Available | Summer 2021

19302 S. Laurel Park Rd. | Rancho Dominguez, CA

The Watson Alameda Park site located in Rancho Dominguez offers customers convenient access to key areas within LA's Metropolis regions: Downtown & West Los Angeles, El Segundo, Torrance, Long Beach and Los Angeles Harbors, and the South Bay regions; this location serves as a major connecting point between the Greater Los Angeles industrial markets.

Highlights

- Available Space:** 27,842 SF
- Land Area:** 3.98 Acres
- Ceiling Height:** 20' Clear
- Loading:** 15 Dock High Doors
1 Ground Level
- Trailer Parking:** 48 stalls



Perspective View



Broker Contact

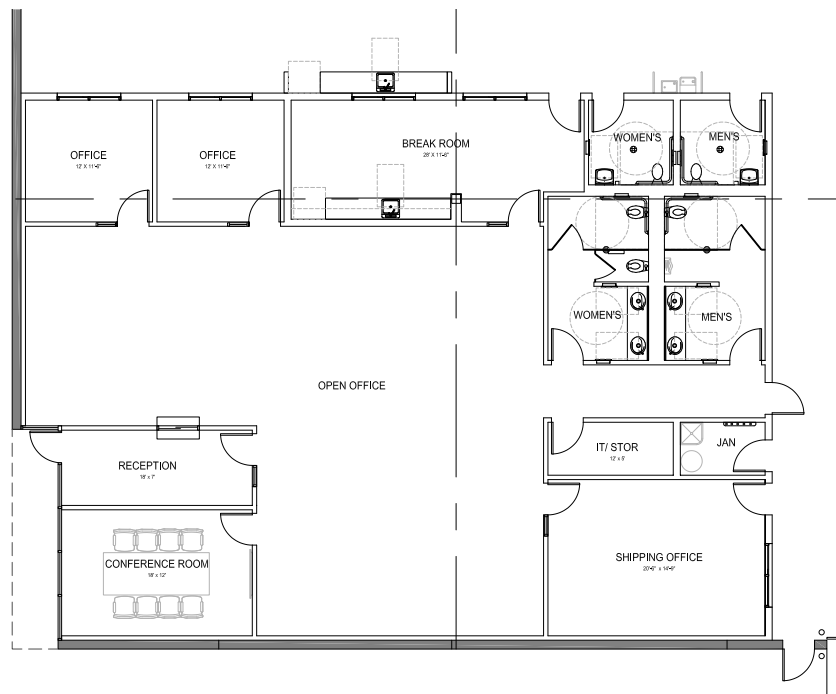
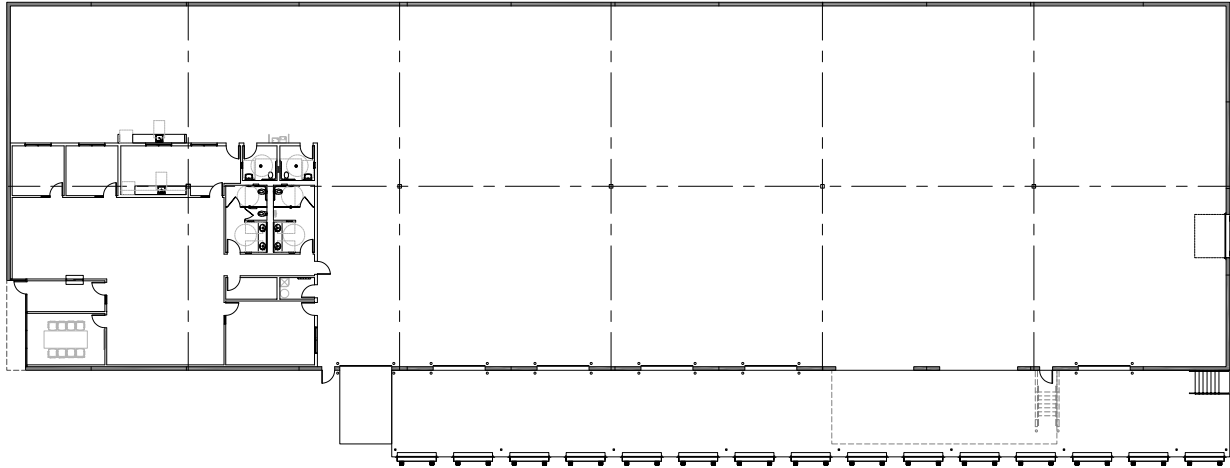
Andrew Lara, SIOR, CCIM
Executive V.P./Principal
(310) 538-6744
alara@daumcre.com
BRE LIC. #01820297

Jordan Lara, SIOR
Executive V.P./Principal
(310) 538-6789
jlara@daumcre.com
BRE LIC. #01877128

Natalie Lara
Associate
(310) 538-6707
natalie.lara@daumcommercial.com
BRE LIC #02044707



Office Floor Plan



Broker Contact

Andrew Lara, SIOR, CCIM
Executive V.P./Principal
(310) 538-6744
alara@daumcre.com
BRE LIC. #01820297

Jordan Lara, SIOR
Executive V.P./Principal
(310) 538-6789
jlara@daumcre.com
BRE LIC. #01877128

Natalie Lara
Associate
(310) 538-6707
natalie.lara@daumcommercial.com
BRE LIC #02044707



Site Plan



Broker Contact

Andrew Lara, SIOR, CCIM
Executive V.P./Principal
(310) 538-6744
alara@daumcre.com
BRE LIC. #01820297

Jordan Lara, SIOR
Executive V.P./Principal
(310) 538-6789
jlara@daumcre.com
BRE LIC. #01877128

Natalie Lara
Associate
(310) 538-6707
natalie.lara@daumcommercial.com
BRE LIC #02044707

