



AVAILABLE

22,974 sf on ±2.3 Acres (100,188 SF)

8710 CENTRAL AVENUE

MONTCLAIR | CALIFORNIA 91763



large ±2.3 Acres
Land Parcel



High Image
Building



Close Proximity to
Montclair Place Mall

FOR MORE INFORMATION, CONTACT:

KERRY COLE

EXECUTIVE VICE PRESIDENT / PRINCIPAL

O: 909.652.9045 | C: 626.824.4774 | F: 909.652.9075

KERRY.COLE@DAUMCOMMERCIAL.COM

CA DRE: 00946482

Although all information is furnished regarding for sale, rental or financing is from sources deemed reliable, such information has not been verified and no express representation is made nor is any to be implied as to the accuracy thereof, and it is submitted subject to errors, omissions, changes of price, rental or other conditions, prior sale, lease or financing, or withdrawal without notice. All maps courtesy of Google Maps, Bing, and Google Earth. D/AQ Corp. #01129558

DAUM
COMMERCIAL REAL ESTATE SERVICES

8710 CENTRAL AVENUE

MONTCLAIR | CALIFORNIA 91763

PROPERTY INFO

- Large, Oversized Land Parcel of Approximately 2.3 Acres (100,188 SF)
- Excellent Location- Two Blocks from Montclair Place Center Mall
- Retail or Office Applications
- High Image Building
- One (1) Dock High Loading Door, Two (2) Ground Level Loading Doors
- Large Showroom Space
- Previous Use: Harley Davidson, Retail Sales + Service Center
- Parcel #1007-691-09
- Zoning: North Montclair Special Zone-Town Center District-Transitional Uses (verify uses with city)

FOR MORE INFORMATION, CONTACT:

KERRY COLE

EXECUTIVE VICE PRESIDENT / PRINCIPAL

O: 909.652.9045 | C: 626.824.4774 | F: 909.652.9075

KERRY.COLE@DAUMCOMMERCIAL.COM

CA DRE: 00946482

Although all information is furnished regarding for sale, rental or financing is from sources deemed reliable, such information has not been verified and no express representation is made nor is any to be implied as to the accuracy thereof, and it is submitted subject to errors, omissions, changes of price, rental or other conditions, prior sale, lease or financing, or withdrawal without notice. All maps courtesy of Google Maps, Bing, and Google Earth. D/AQ Corp. # 01129558



8710 CENTRAL AVENUE

MONTCLAIR | CALIFORNIA 91763



RIGHTON ST.

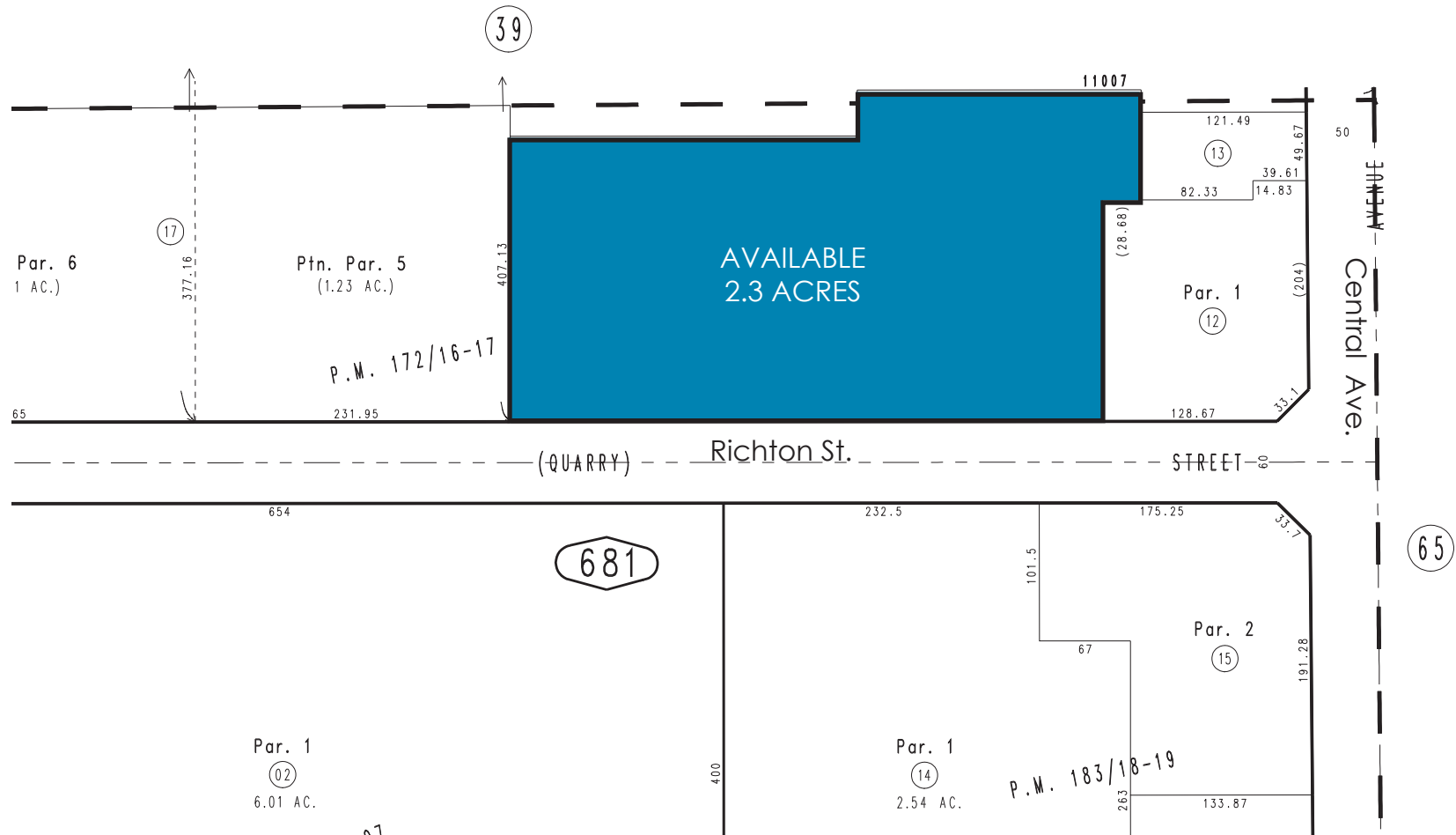
CENTRAL AVE.

Property Line Approximated

Although all information is furnished regarding for sale, rental or financing is from sources deemed reliable, such information has not been verified and no express representation is made nor is any to be implied as to the accuracy thereof, and it is submitted subject to errors, omissions, changes of price, rental or other conditions, prior sale, lease or financing, or withdrawal without notice. All maps courtesy of Google Maps, Bing, and Google Earth. D/IAQ Corp. # 01129558



PARCEL MAPS



Although all information is furnished regarding for sale, rental or financing is from sources deemed reliable, such information has not been verified and no express representation is made nor is any to be implied as to the accuracy thereof, and it is submitted subject to errors, omissions, changes of price, rental or other conditions, prior sale, lease or financing, or withdrawal without notice. All maps courtesy of Google Maps, Bing, and Google Earth. D/AQ Corp. #01129558

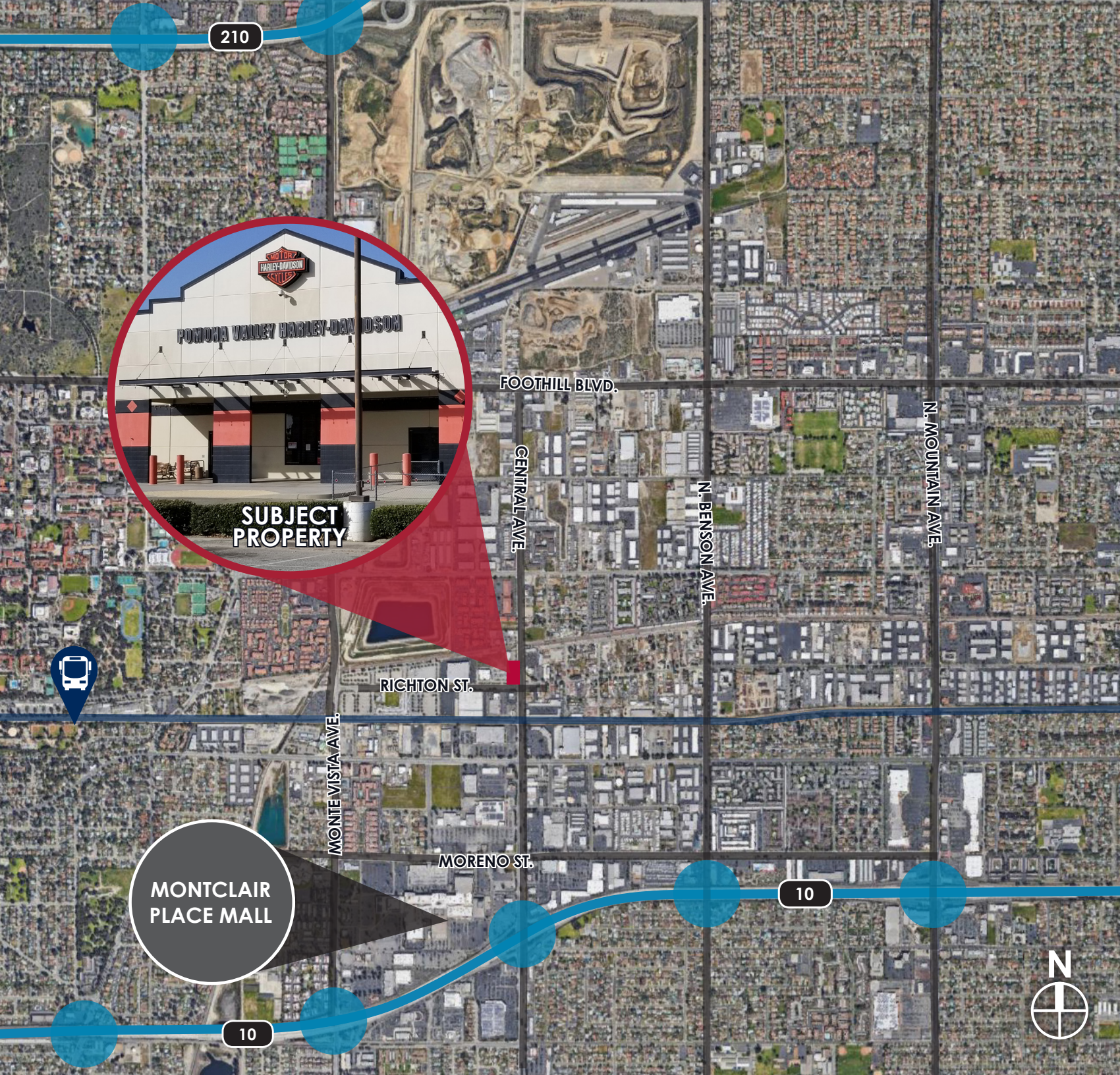


8710 CENTRAL AVENUE

MONTCLAIR | CALIFORNIA 91763

Although all information is furnished regarding for sale, rental or financing is from sources deemed reliable, such information has not been verified and no express representation is made nor is any to be implied as to the accuracy thereof, and it is submitted subject to errors, omissions, changes of price, rental or other conditions, prior sale, lease or financing, or withdrawal without notice. All maps courtesy of Google Maps, Bing, and Google Earth. D/IAQ Corp. # 01129558

DAUM
COMMERCIAL REAL ESTATE SERVICES



210

FOOTHILL BLVD.

CENTRAL AVE.

N. BENSON AVE.

N. MOUNTAIN AVE.

SUBJECT
PROPERTY

RIGHTON ST.

MONTIE VISTA AVE.

MORENO ST.

MONTCLAIR
PLACE MALL

10

10