



# 4,500 SF FOR LEASE

21592 SURVEYOR CIRCLE  
HUNTINGTON BEACH | CA 92646

FOR MORE INFORMATION PLEASE CONTACT:

**DEVIN RAY**  
**ASSOCIATE**

P: 949.242.1065 | M: 714.322.1252  
devin.ray@daumcommercial.com  
CADRE #02018130



**MIKE BARREIRO**  
**EXECUTIVE V.P. | PRINCIPAL**

P: 949.355.8500  
mike.barreiro@daumcommercial.com  
CADRE #01712620



**GAVIN DENNISTON**  
**EXECUTIVE V.P. | PRINCIPAL**

P: 949.242.1711  
gavin.denniston@daumcommercial.com  
CADRE #01837752

Although all information is furnished regarding for sale, rental or financing is from sources deemed reliable, such information has not been verified and no express representation is made nor is any to be implied as to the accuracy thereof, and it is submitted subject to errors, omissions, changes of price, rental or other conditions, prior sale, lease or financing, or withdrawal without notice.



4,500 SF INDUSTRIAL CONDO

4,500 SF

21592 SURVEYOR CIRCLE  
HUNTINGTON BEACH | CA 92646

FOR LEASE



### PROPERTY FEATURES:

- 4,500 SF Industrial Condominium
- 2,000 SF Office
- 1,100 SF Bonus Usable Mezzanine
- (2) Private Offices
- Reception Area
- Conference Room
- Kitchenette
- Washer/Dryer
- (1) Warehouse Office
- (1) Automatic GL Door (14'H x 11'W)
- 17' Warehouse Clearance
- Sprinklered
- Power: 400 Amps, 120/208 Volt (Verify)
- Warehouse Skylights
- Office Furniture Available
- (8) Parking Stalls

FOR MORE INFORMATION PLEASE CONTACT:

**DEVIN RAY**  
ASSOCIATE

P: 949.242.1065 | M: 714.322.1252  
devin.ray@daumcommercial.com  
CADRE #02018130



**MIKE BARREIRO**

EXECUTIVE V.P. | PRINCIPAL

P: 949.355.8500  
mike.barreiro@daumcommercial.com  
CADRE #01712620



**GAVIN DENNISTON**

EXECUTIVE V.P. | PRINCIPAL

P: 949.242.1711  
gavin.denniston@daumcommercial.com  
CADRE #01837752

Although all information is furnished regarding for sale, rental or financing is from sources deemed reliable, such information has not been verified and no express representation is made nor is any to be implied as to the accuracy thereof, and it is submitted subject to errors, omissions, changes of price, rental or other conditions, prior sale, lease or financing, or withdrawal without notice.



4,500 SF

21592 SURVEYOR CIRCLE  
HUNTINGTON BEACH | CA 92646

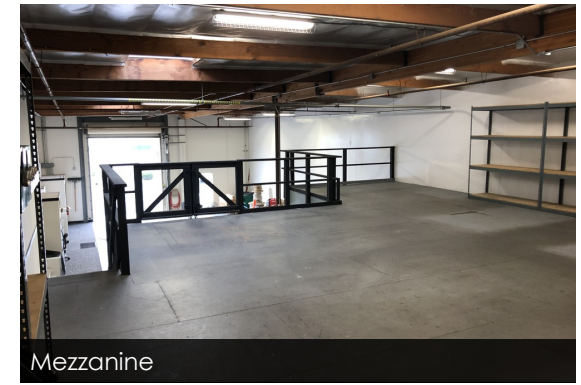
FOR LEASE



Reception Area



Kitchenette



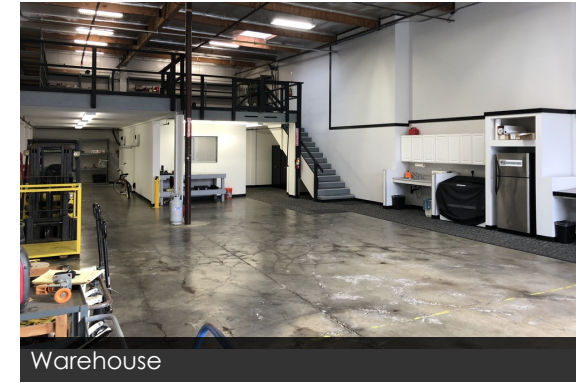
Mezzanine



Reception Desk



Office



Warehouse



Conference Room



Office



GL Door

FOR MORE INFORMATION PLEASE CONTACT:

**DEVIN RAY**  
ASSOCIATE

P: 949.242.1065 | M: 714.322.1252  
devin.ray@daumcommercial.com  
CADRE #02018130



**MIKE BARREIRO**

EXECUTIVE V.P. | PRINCIPAL

P: 949.355.8500  
mike.barreiro@daumcommercial.com  
CADRE #01712620



**GAVIN DENNISTON**

EXECUTIVE V.P. | PRINCIPAL

P: 949.242.1711  
gavin.denniston@daumcommercial.com  
CADRE #01837752

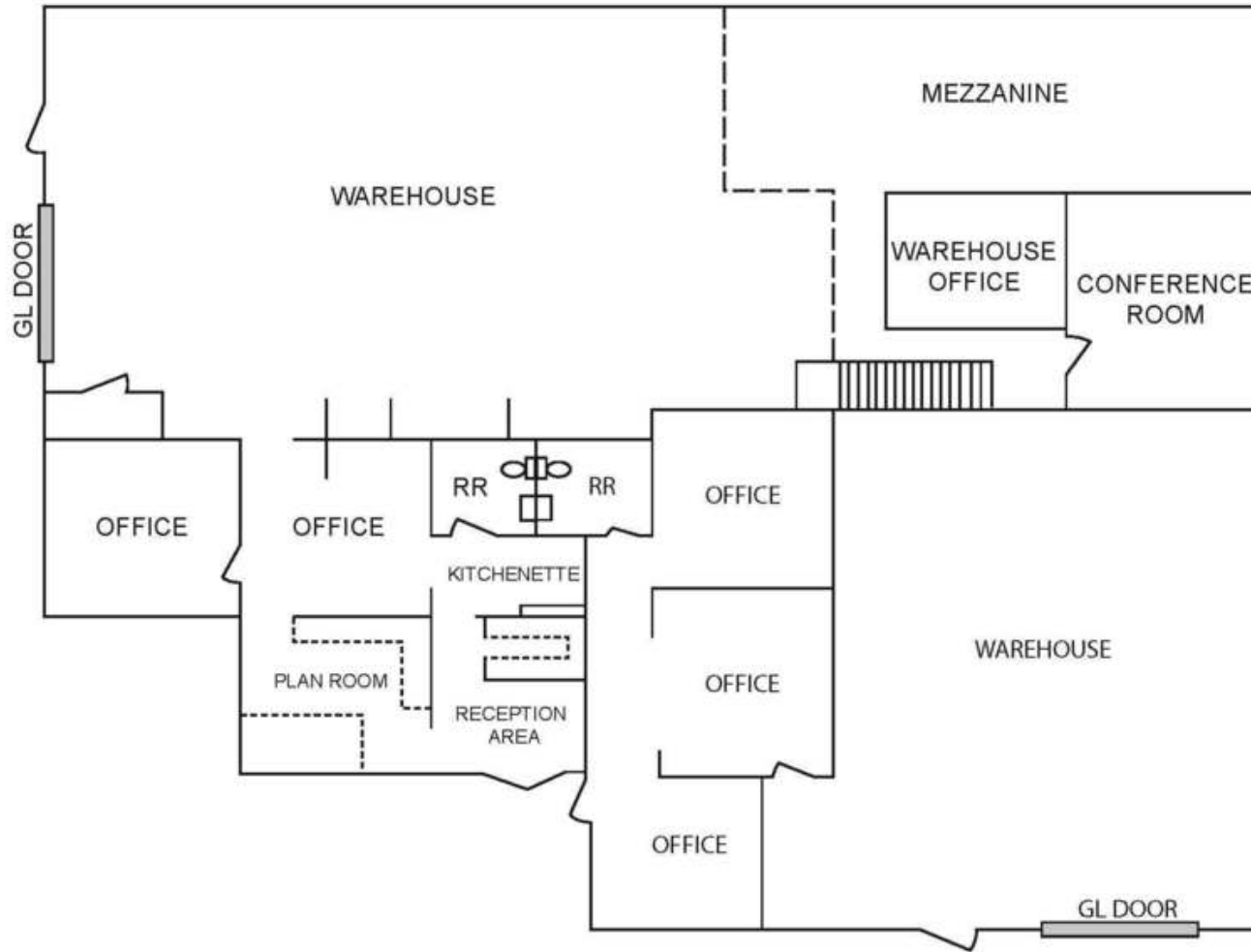
Although all information is furnished regarding for sale, rental or financing is from sources deemed reliable, such information has not been verified and no express representation is made nor is any to be implied as to the accuracy thereof, and it is submitted subject to errors, omissions, changes of price, rental or other conditions, prior sale, lease or financing, or withdrawal without notice.



4,500 SF

21592 SURVEYOR CIRCLE  
HUNTINGTON BEACH | CA 92646

FOR LEASE



Floorplan

FOR MORE INFORMATION PLEASE CONTACT:

**DEVIN RAY**  
ASSOCIATE

P: 949.242.1065 | M: 714.322.1252  
devin.ray@daumcommercial.com  
CADRE #02018130

**MIKE BARREIRO**

EXECUTIVE V.P. | PRINCIPAL

P: 949.355.8500  
mike.barreiro@daumcommercial.com  
CADRE #01712620



**GAVIN DENNISTON**

EXECUTIVE V.P. | PRINCIPAL

P: 949.242.1711  
gavin.denniston@daumcommercial.com  
CADRE #01837752

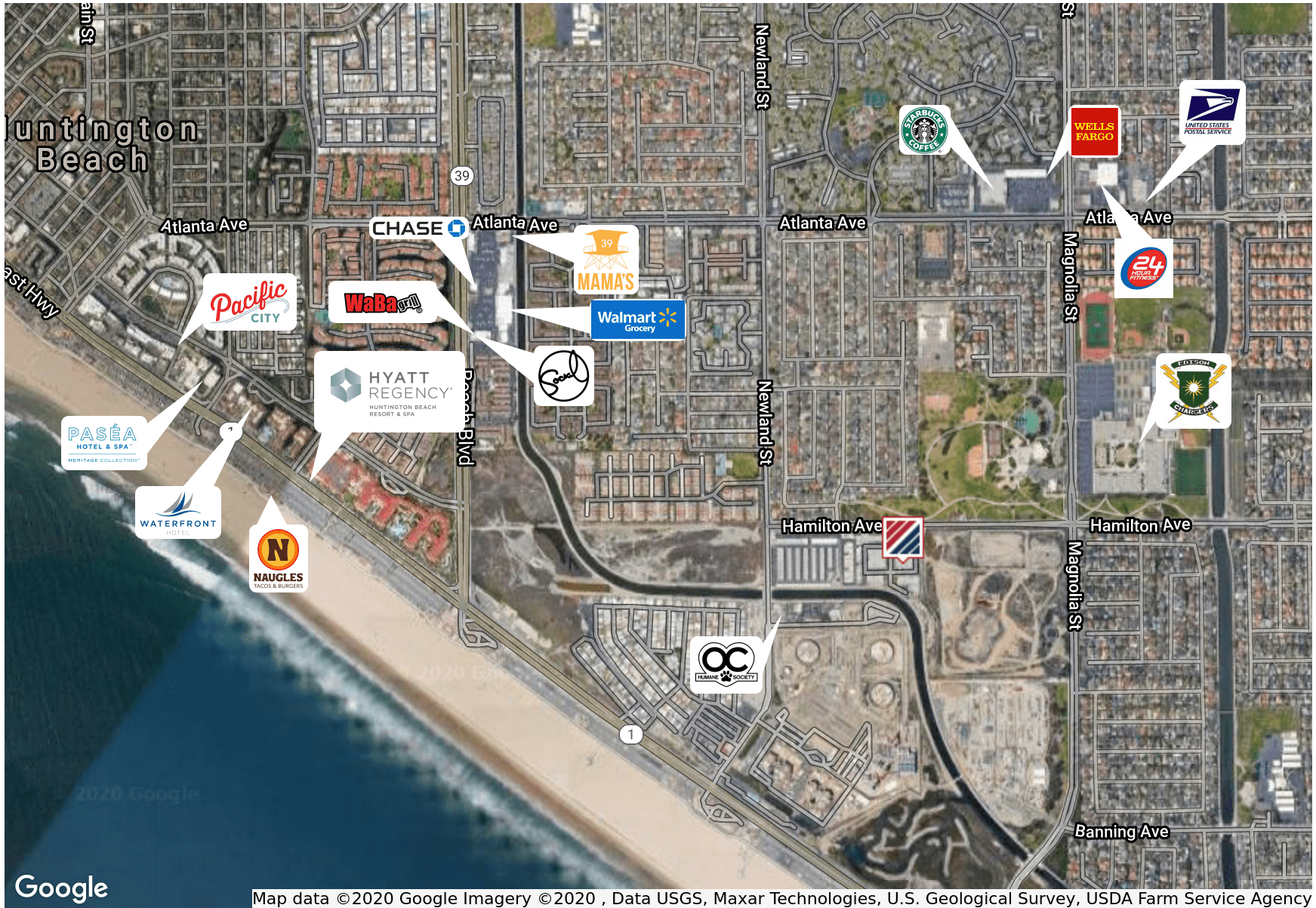
Although all information is furnished regarding for sale, rental or financing is from sources deemed reliable, such information has not been verified and no express representation is made nor is any to be implied as to the accuracy thereof, and it is submitted subject to errors, omissions, changes of price, rental or other conditions, prior sale, lease or financing, or withdrawal without notice.



4,500 SF

21592 SURVEYOR CIRCLE  
HUNTINGTON BEACH | CA 92646

FOR LEASE



FOR MORE INFORMATION PLEASE CONTACT:

**DEVIN RAY**

ASSOCIATE

P: 949.242.1065 | M: 714.322.1252

devin.ray@daumcommercial.com

CADRE #02018130



**MIKE BARREIRO**

EXECUTIVE V.P. | PRINCIPAL

P: 949.355.8500

mike.barreiro@daumcommercial.com

CADRE #01712620



**GAVIN DENNISTON**

EXECUTIVE V.P. | PRINCIPAL

P: 949.242.1711

gavin.denniston@daumcommercial.com

CADRE #01837752

Although all information is furnished regarding for sale, rental or financing is from sources deemed reliable, such information has not been verified and no express representation is made nor is any to be implied as to the accuracy thereof, and it is submitted subject to errors, omissions, changes of price, rental or other conditions, prior sale, lease or financing, or withdrawal without notice.

