

FOR LEASE

1500 S. CENTRAL AVENUE
LOS ANGELES | CA 90021

FOR MORE INFORMATION PLEASE CONTACT:

BRYAN ABAYAN
ASSOCIATE

P: 310.883.8476

bryan.abayan@daumcommercial.com

CADRE #02005294

JERRY SACKLER
EXECUTIVE VICE PRESIDENT

P: 213.270.2267

jerry.sackler@daumcommercial.com

CADRE #01098039

VARIOUS SF INDUSTRIAL

Although all information is furnished regarding for sale, rental or financing is from sources deemed reliable, such information has not been verified and no express representation is made nor is any to be implied as to the accuracy thereof, and it is submitted subject to errors, omissions, changes of price, rental or other conditions, prior sale, lease or financing, or withdrawal without notice.

 **DAUM**
COMMERCIAL REAL ESTATE SERVICES

Various SF
INDUSTRIAL

1500 S. CENTRAL AVENUE
LOS ANGELES | CA 90021

FOR LEASE



PROPERTY FEATURES

- Warehouse / Retail for Lease
- LA M2 Zoning
- Built in 1927 Remodeled 2020
- Block/Brick Construction
- High Power
- Excellent Gated and Secure Parking
- Amazing Signage
- Great Natural Lighting | Exposed Brick
- Located Seconds away from the Santa Monica (10) Freeway On/Off Ramps
- On Major Street of South-Central Ave Thousands of Cars Per Day
- All Units Sprinklered

FOR MORE INFORMATION PLEASE CONTACT:

BRYAN ABAYAN
ASSOCIATE

P: 310.883.8476
bryan.abayan@daumcommercial.com
CADRE #02005294

JERRY SACKLER
EXECUTIVE VICE PRESIDENT

P: 213.270.2267
jerry.sackler@daumcommercial.com
CADRE #01098039

Although all information is furnished regarding for sale, rental or financing is from sources deemed reliable, such information has not been verified and no express representation is made nor is any to be implied as to the accuracy thereof, and it is submitted subject to errors, omissions, changes of price, rental or other conditions, prior sale, lease or financing, or withdrawal without notice.

DAUM
COMMERCIAL REAL ESTATE SERVICES

Various SF
INDUSTRIAL

1500 S. CENTRAL AVENUE
LOS ANGELES | CA 90021

FOR LEASE



UNIT A HIGHLIGHTS

- ±2,588 Total Square Feet Warehouse / Retail for Lease
- Total Base Rent \$4,270 Gross, Per Month
- M2 Zoning
- Excellent Natural Light
- High Ceilings | High Power
- Exposed Brick | Gated & Secure Parking
- Clear Height: 14.5' | Sprinklered

OFFERING SUMMARY

Lease Rate:	\$1.65/SF/month (Gross)
Available SF:	2,588
Building Size:	49,280 SF

FOR MORE INFORMATION PLEASE CONTACT:

BRYAN ABAYAN
ASSOCIATE

P: 310.883.8476
bryan.abayan@daumcommercial.com
CADRE #02005294

JERRY SACKLER
EXECUTIVE VICE PRESIDENT

P: 213.270.2267
jerry.sackler@daumcommercial.com
CADRE #01098039

Although all information is furnished regarding for sale, rental or financing is from sources deemed reliable, such information has not been verified and no express representation is made nor is any to be implied as to the accuracy thereof, and it is submitted subject to errors, omissions, changes of price, rental or other conditions, prior sale, lease or financing, or withdrawal without notice.

DAUM
COMMERCIAL REAL ESTATE SERVICES

Various SF
INDUSTRIAL

1500 S. CENTRAL AVENUE
LOS ANGELES | CA 90021

FOR LEASE



UNIT B HIGHLIGHTS

- ±3,793 Total Square Feet Warehouse / Retail for Lease
- Base Rent \$6,258 Gross Per Month
- M2 Zoning
- Excellent Natural Light
- High Ceilings | High Power
- Exposed Brick | Gated & Secure Parking
- Clear Height: 14.5' | Sprinklered

OFFERING SUMMARY

Lease Rate:	\$1.65/SF/month (Gross)
Available SF:	3,793 SF
Building Size:	49,280 SF

FOR MORE INFORMATION PLEASE CONTACT:

BRYAN ABAYAN
ASSOCIATE

P: 310.883.8476
bryan.abayan@daumcommercial.com
CADRE #02005294

JERRY SACKLER
EXECUTIVE VICE PRESIDENT

P: 213.270.2267
jerry.sackler@daumcommercial.com
CADRE #01098039

Although all information is furnished regarding for sale, rental or financing is from sources deemed reliable, such information has not been verified and no express representation is made nor is any to be implied as to the accuracy thereof, and it is submitted subject to errors, omissions, changes of price, rental or other conditions, prior sale, lease or financing, or withdrawal without notice.

DAUM
COMMERCIAL REAL ESTATE SERVICES

Various SF
INDUSTRIAL

1500 S. CENTRAL AVENUE
LOS ANGELES | CA 90021

FOR LEASE



UNIT C HIGHLIGHTS

- ±7,050 Total Square Feet Warehouse / Retail for Lease
- Base Rent \$12,338 Gross Per Month
- M2 Zoning
- Excellent Natural Light
- High Ceilings | High Power
- Exposed Brick | Gated & Secure Parking
- Clear Height: 13'-19' | Sprinklered

OFFERING SUMMARY

Lease Rate:	\$1.75 SF/month (Gross)
Available SF:	7,050 SF
Building Size:	49,280 SF

FOR MORE INFORMATION PLEASE CONTACT:

BRYAN ABAYAN
ASSOCIATE

P: 310.883.8476
bryan.abayan@daumcommercial.com
CADRE #02005294

JERRY SACKLER
EXECUTIVE VICE PRESIDENT

P: 213.270.2267
jerry.sackler@daumcommercial.com
CADRE #01098039

Although all information is furnished regarding for sale, rental or financing is from sources deemed reliable, such information has not been verified and no express representation is made nor is any to be implied as to the accuracy thereof, and it is submitted subject to errors, omissions, changes of price, rental or other conditions, prior sale, lease or financing, or withdrawal without notice.

Various SF
INDUSTRIAL

1500 S. CENTRAL AVENUE
LOS ANGELES | CA 90021

FOR LEASE



FOR MORE INFORMATION PLEASE CONTACT:

BRYAN ABAYAN
ASSOCIATE

P: 310.883.8476
bryan.abayan@daumcommercial.com
CADRE #02005294

JERRY SACKLER
EXECUTIVE VICE PRESIDENT

P: 213.270.2267
jerry.sackler@daumcommercial.com
CADRE #01098039

Although all information is furnished regarding for sale, rental or financing is from sources deemed reliable, such information has not been verified and no express representation is made nor is any to be implied as to the accuracy thereof, and it is submitted subject to errors, omissions, changes of price, rental or other conditions, prior sale, lease or financing, or withdrawal without notice.

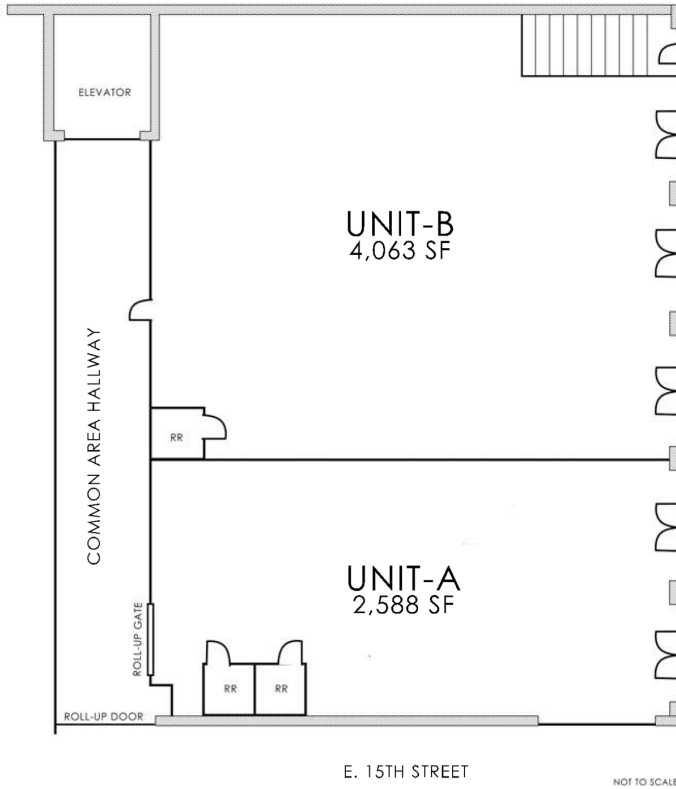


Various SF

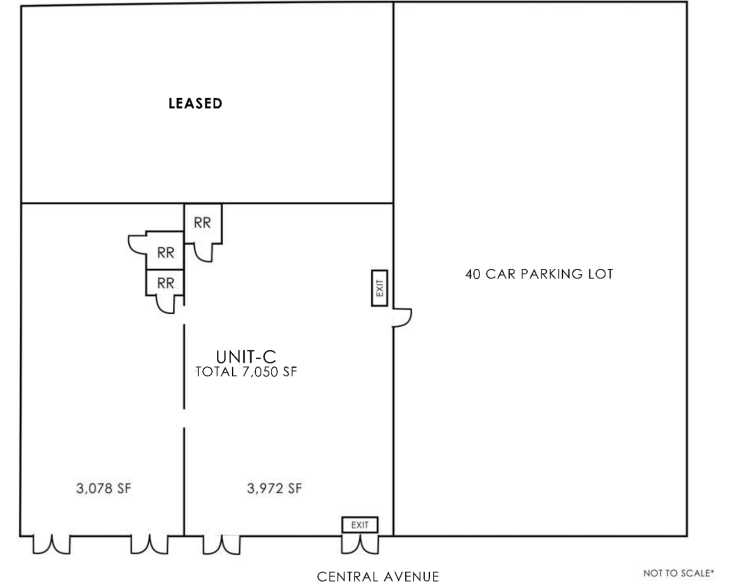
INDUSTRIAL

FOR LEASE
1500 S. CENTRAL AVENUE
LOS ANGELES | CA 90021

1500 S. CENTRAL AVE.
LOS ANGELES | CA



1500 S. CENTRAL AVE.
LOS ANGELES | CA



FOR MORE INFORMATION PLEASE CONTACT:

BRYAN ABAYAN
ASSOCIATE

P: 310.883.8476
bryan.abayan@daumcommercial.com
CADRE #02005294

JERRY SACKLER
EXECUTIVE VICE PRESIDENT

P: 213.270.2267
jerry.sackler@daumcommercial.com
CADRE #01098039

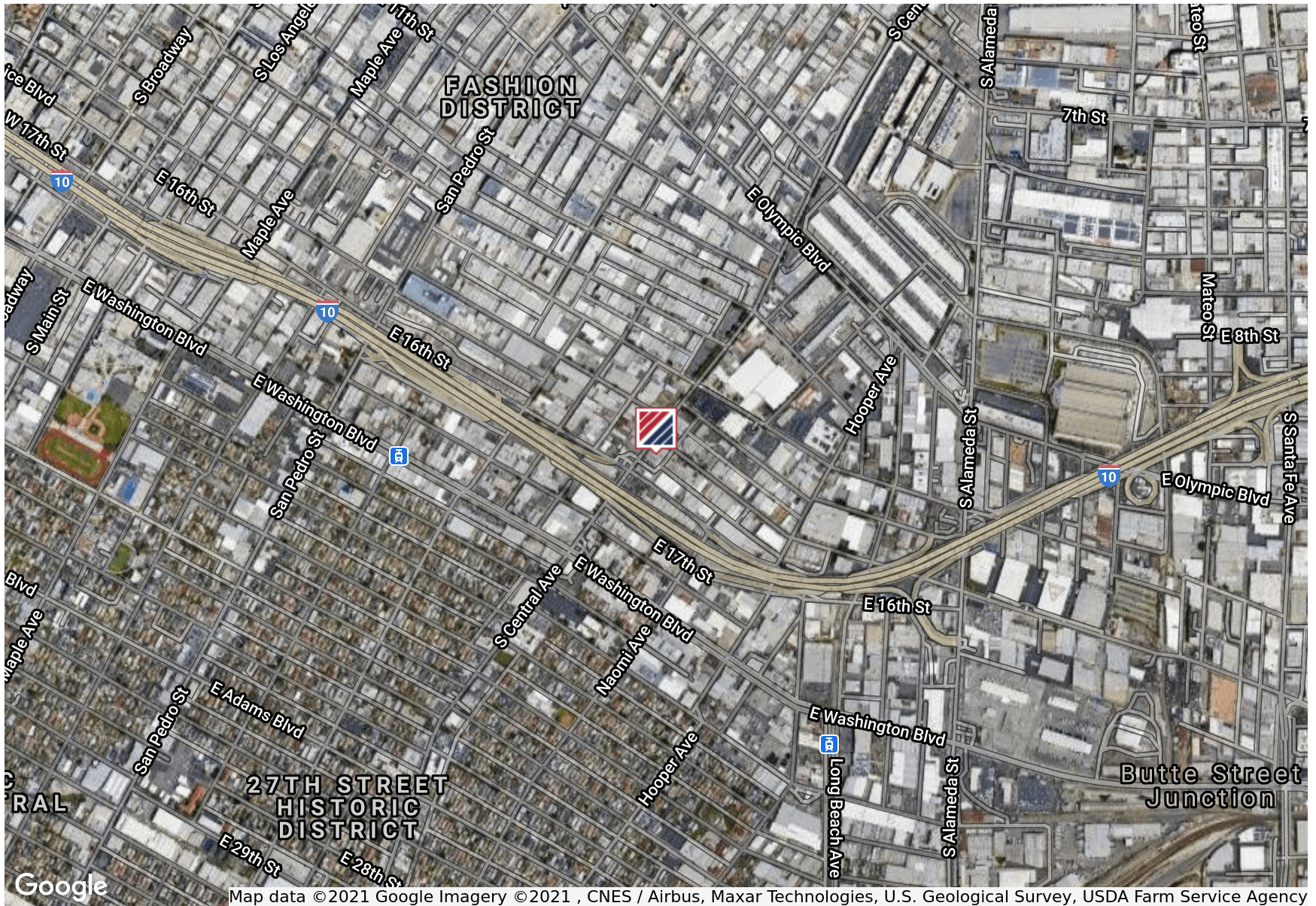
Although all information is furnished regarding for sale, rental or financing is from sources deemed reliable, such information has not been verified and no express representation is made nor is any to be implied as to the accuracy thereof, and it is submitted subject to errors, omissions, changes of price, rental or other conditions, prior sale, lease or financing, or withdrawal without notice.



Various SF
INDUSTRIAL

1500 S. CENTRAL AVENUE
LOS ANGELES | CA 90021

FOR LEASE



Map data ©2021 Google Imagery ©2021, CNES / Airbus, Maxar Technologies, U.S. Geological Survey, USDA Farm Service Agency

FOR MORE INFORMATION PLEASE CONTACT:

BRYAN ABAYAN
ASSOCIATE

P: 310.883.8476
bryan.abayan@daumcommercial.com
CADRE #02005294

JERRY SACKLER
EXECUTIVE VICE PRESIDENT

P: 213.270.2267
jerry.sackler@daumcommercial.com
CADRE #01098039

Although all information is furnished regarding for sale, rental or financing is from sources deemed reliable, such information has not been verified and no express representation is made nor is any to be implied as to the accuracy thereof, and it is submitted subject to errors, omissions, changes of price, rental or other conditions, prior sale, lease or financing, or withdrawal without notice.

