


FOR SALE/ LEASE

435 RIVERA ST, BLDG E
RIVERSIDE | CA 92501



6,746 SF
SQUARE FEET



1,544
OFFICE SF



20 ft
CLEAR HEIGHT



2
GL DOORS

FOR MORE INFORMATION PLEASE CONTACT:

MARK SCHAFER
VICE PRESIDENT

P: 909.652.9052 | M: 949.923.9890
mark.schafer@daumcommercial.com
CADRE #01902664

NOAH SAMARIN
EXECUTIVE VICE PRESIDENT

P: 909.912.0007
noah.samarin@daumcommercial.com
CADRE #01755814

6,746 SF INDUSTRIAL

Although all information is furnished regarding for sale, rental or financing is from sources deemed reliable, such information has not been verified and no express representation is made nor is any to be implied as to the accuracy thereof, and it is submitted subject to errors, omissions, changes of price, rental or other conditions, prior sale, lease or financing, or withdrawal without notice.

6,746 SF
INDUSTRIAL

FOR SALE/LEASE
435 RIVERA ST, BLDG E
RIVERSIDE | CA 92501



PROPERTY FEATURES

- 6,746 SF Industrial Building
- 1,544 SF Deluxe Office Space
- 20' Clear Height
- Two (2) 12'x14' Roll-Up Doors
- 600 Amps, 277/480 V Power (verify)
- City of Riverside Power
- Excellent North Riverside Location
- Large Secured Yard

FOR MORE INFORMATION PLEASE CONTACT:

MARK SCHAFER
VICE PRESIDENT

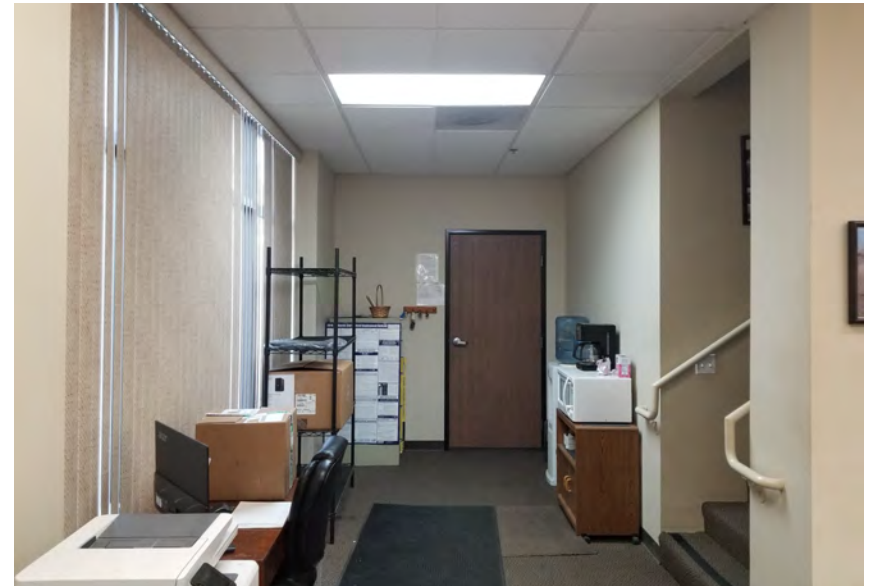
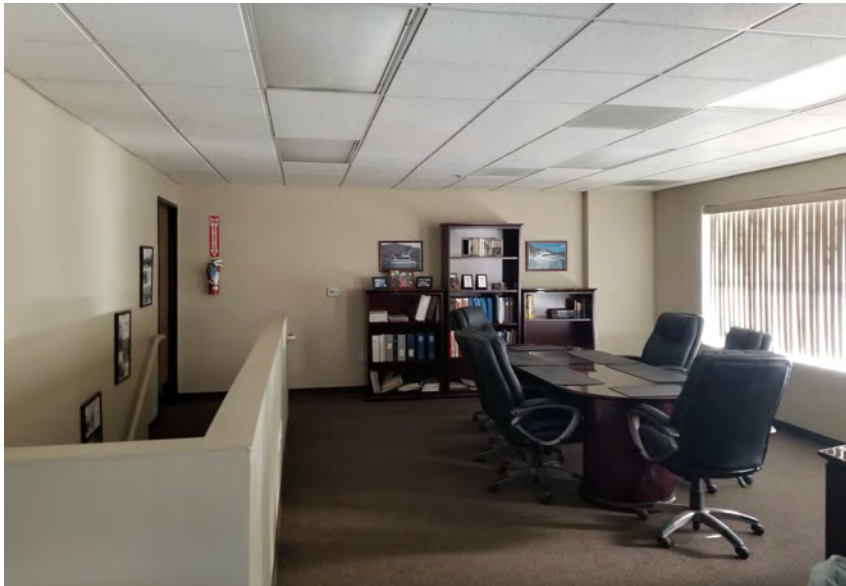
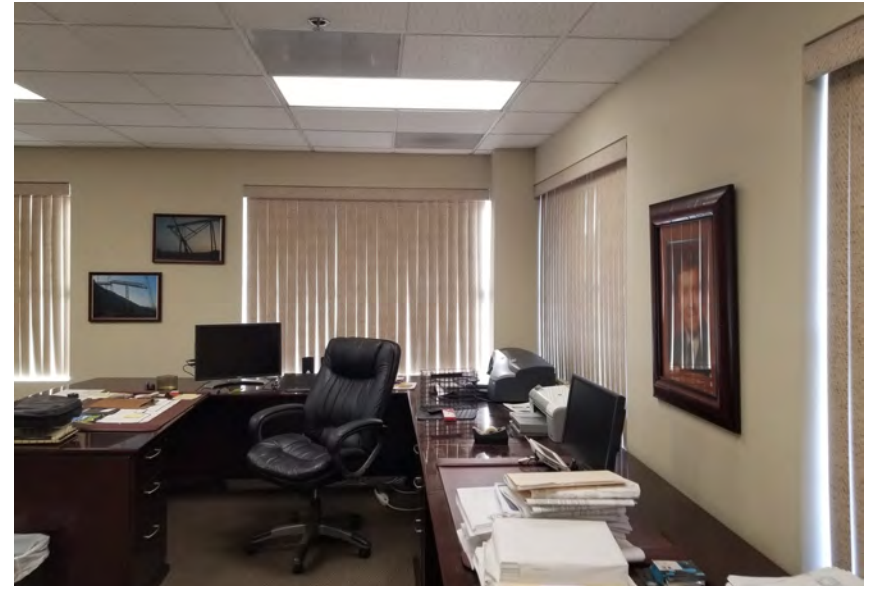
P: 909.652.9052 | M: 949.923.9890
mark.schafer@daumcommercial.com
CADRE #01902664

NOAH SAMARIN
EXECUTIVE VICE PRESIDENT

P: 909.912.0007
noah.samarin@daumcommercial.com
CADRE #01755814

6,746 SF
INDUSTRIAL

435 RIVERA ST, BLDG E
RIVERSIDE | CA 92501
FOR SALE/LEASE



FOR MORE INFORMATION PLEASE CONTACT:

MARK SCHAFER
VICE PRESIDENT

P: 909.652.9052 | M: 949.923.9890
mark.schafer@daumcommercial.com
CADRE #01902664

NOAH SAMARIN
EXECUTIVE VICE PRESIDENT

P: 909.912.0007
noah.samarin@daumcommercial.com
CADRE #01755814

Although all information is furnished regarding for sale, rental or financing is from sources deemed reliable, such information has not been verified and no express representation is made nor is any to be implied as to the accuracy thereof, and it is submitted subject to errors, omissions, changes of price, rental or other conditions, prior sale, lease or financing, or withdrawal without notice.



6,746 SF
INDUSTRIAL

FOR SALE/LEASE
435 RIVERA ST, BLDG E
RIVERSIDE | CA 92501



FOR MORE INFORMATION PLEASE CONTACT:

MARK SCHAFER
VICE PRESIDENT

P: 909.652.9052 | M: 949.923.9890
mark.schafer@daumcommercial.com
CADRE #01902664

NOAH SAMARIN
EXECUTIVE VICE PRESIDENT

P: 909.912.0007
noah.samarin@daumcommercial.com
CADRE #01755814

Although all information is furnished regarding for sale, rental or financing is from sources deemed reliable, such information has not been verified and no express representation is made nor is any to be implied as to the accuracy thereof, and it is submitted subject to errors, omissions, changes of price, rental or other conditions, prior sale, lease or financing, or withdrawal without notice.



6,746 SF

INDUSTRIAL

435 RIVERA ST, BLDG E
RIVERSIDE | CA 92501

FOR SALE/LEASE



FOR MORE INFORMATION PLEASE CONTACT:

MARK SCHAFER
VICE PRESIDENT

P: 909.652.9052 | M: 949.923.9890
mark.schafer@daumcommercial.com
CADRE #01902664

NOAH SAMARIN
EXECUTIVE VICE PRESIDENT

P: 909.912.0007
noah.samarin@daumcommercial.com
CADRE #01755814

Although all information is furnished regarding for sale, rental or financing is from sources deemed reliable, such information has not been verified and no express representation is made nor is any to be implied as to the accuracy thereof, and it is submitted subject to errors, omissions, changes of price, rental or other conditions, prior sale, lease or financing, or withdrawal without notice.

DAUM
COMMERCIAL REAL ESTATE SERVICES