

CYPRESS CORPORATE CENTER

±12,201 SQUARE FEET FOR SUBLEASE



6122 KATELLA AVENUE • CYPRESS, CALIFORNIA

PROJECT FEATURES

- High-Image Corporate Headquarters Facility
- Beautiful Cypress Corporate Center Location
- 2,077 SF of Office Space
- 24' Minimum Warehouse Ceiling Clearance
- Two (2) Dock High Loading Doors
- One (1) Shared Ground Level Door
- Katella Avenue Frontage
- Ample Parking Available
- Drought Tolerant Landscaping
- Prestigious Corporate Neighbors
- Competitive NNN Fees
- Sublease Expires 02/28/2027

ANOTHER QUALITY PROJECT BY:

CYPRESS
LAND COMPANY

Exclusively Marketed By:

Samuel Chu
Direct **562.207.3303**
Cell **562.355.9945**
sam.chu@daumcommercial.com
CA DRE #01186837

Sophia Rocha
Direct **310.538.6711**
Cell **562.606.9570**
srocha@daumcommercial.com
CA DRE #02020598


COMMERCIAL REAL ESTATE SERVICES

www.daumcommercial.com

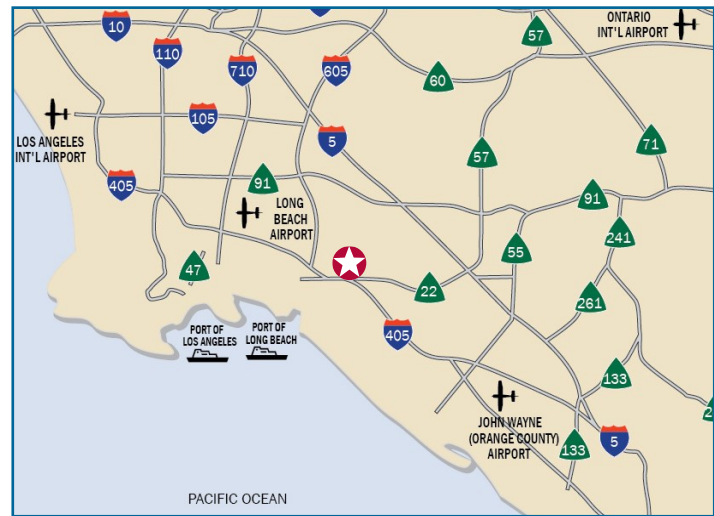
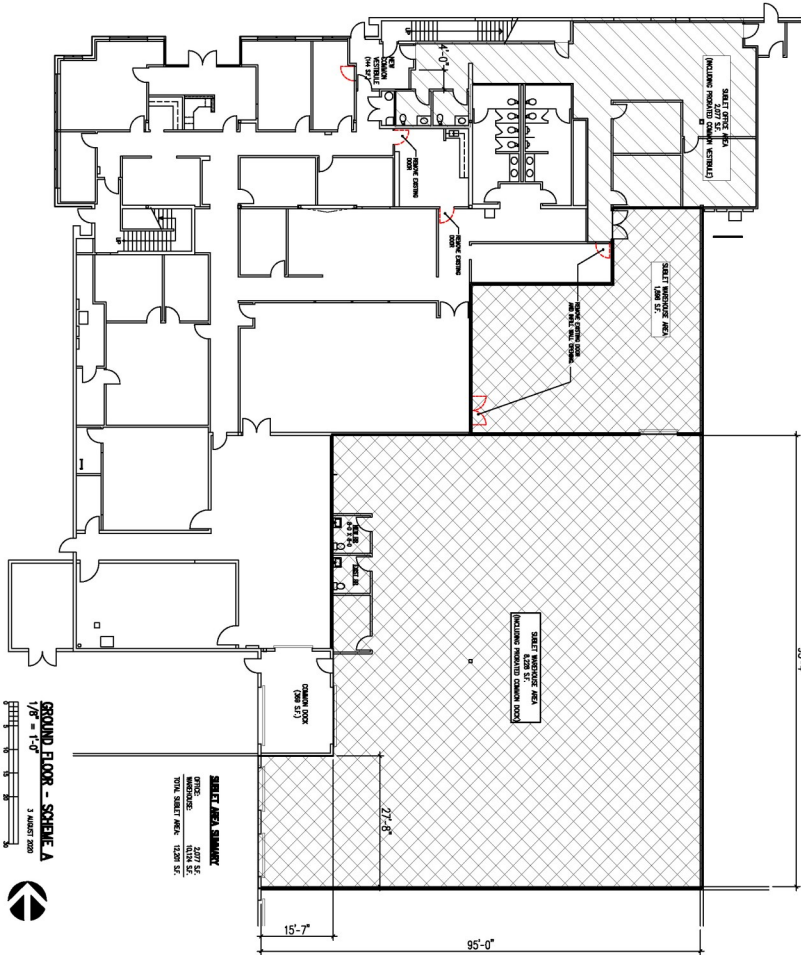
Although all information furnished regarding for sale, rental or financing is from sources deemed reliable, such information has not been verified and no express representation is made nor is any to be implied as to the accuracy thereof, and it is submitted subject to errors, omissions, changes of price, rental or other conditions, prior sale, lease or financing, or withdrawal without notice. All maps courtesy of Google Maps, Bing, and Google Earth. D/AQ Corp. # 01129558

ONCOR INTERNATIONAL

CYPRESS CORPORATE CENTER

6122 KATELLA AVENUE • CYPRESS, CALIFORNIA

±12,201 SQUARE FEET FOR SUBLEASE



CORPORATE NEIGHBORS

- > Arrowhead Products
- > Daiwa Corporation
- > Earth Friendly Products
- > Ericsson, Inc.
- > Fuji Photo Film USA, Inc.
- > GES
- > Hilti
- > Hoyu
- > Hybrid Apparel
- > International Paper, Inc.
- > Kaeser Compressors, Inc.
- > LT Foods America
- > LTP Modern Machines
- > MC Machinery
- > Mary Kay, Inc.
- > Matsushita Electric
- > Mitsubishi Electronics America, Inc.
- > Money Mailer
- > Nortel Communications Systems, Inc.
- > Pratt & Whitney
- > Premier Displays & Exhibits
- > Rolls Royce
- > Shaw Industries, Inc.
- > Siemens
- > Speedo
- > Sony Electronics, Inc.
- > Tayco Engineering, Inc.
- > TDK
- > Toyo Tire
- > United Health Group
- > Unit Technology America, Inc.
- > Ushio America, Inc.
- > Yamaha Motor Corporation

ANOTHER QUALITY PROJECT BY:



Exclusively Marketed By:

Samuel Chu
 Direct 562.207.3303
 Cell 562.355.9945
 sam.chu@daumcommercial.com
 CA DRE #01186837

Sophia Rocha
 Direct 310.538.6711
 Cell 562.606.9570
 srocha@daumcommercial.com
 CA DRE #02020598



www.daumcommercial.com

ONCOR INTERNATIONAL

Although all information furnished regarding for sale, rental or financing is from sources deemed reliable, such information has not been verified and no express representation is made nor is any to be implied as to the accuracy thereof, and it is submitted subject to errors, omissions, changes of price, rental or other conditions, prior sale, lease or financing, or withdrawal without notice. All maps courtesy of Google Maps, Bing, and Google Earth. DIAQ Corp. # 01129558