

143,785 SF

OAKMONT / CORONA

OVER 400,000 CARS PER DAY PASS THIS BUILDING



VIEW FROM 15 FWY NORTHBOUND TO 91 FWY EAST

210 Radio Road | Corona | CA

STATE OF THE ART FEATURES

- Four (4) Ground Level Doors
- 16 Dock High Loading Doors, 8 Dock High Doors equipped with 35,000lb Load Levelers
- 5,000 SF of Deluxe Ready to Occupy Office plus Additional 5,000 Mezzanine for Additional Office Build Out
- ESFR Sprinkler System (K-25 heads)
- 32' Clear Height
- 2,000 Amps 277/480 Volts
- M-3 Zoning
- Great Access to the I-15 and 91 Freeways
- Over 400,000 cars per day pass this building
- 226 associate parking stalls
- Complete building drive around capability



FOR MORE INFORMATION, CONTACT:

Timothy N. Hawke, SIOR

Owner/President

P: 951.280.1733 | M: 951.533.2513

thawke@stratarealty.com

CADRE #00880273

Rick John, SIOR

Executive Vice President

P: 909.912.0001 | M: 949.378.4661

rj@daumcommercial.com

CADRE #00800783



OAKMONT / CORONA

210 Radio Road | Corona CA



FOR MORE INFORMATION, CONTACT:

Timothy N. Hawke, SIOR

Owner/President

P: 951.280.1733 | M: 951.533.2513

thawke@stratarealty.com

CADRE #00880273

Rick John, SIOR

Executive Vice President

P: 909.912.0001 | M: 949.378.4661

rj@daumcommercial.com

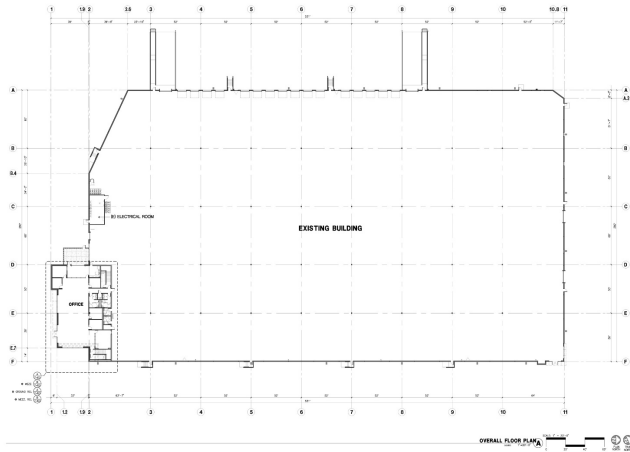
CADRE #00800783



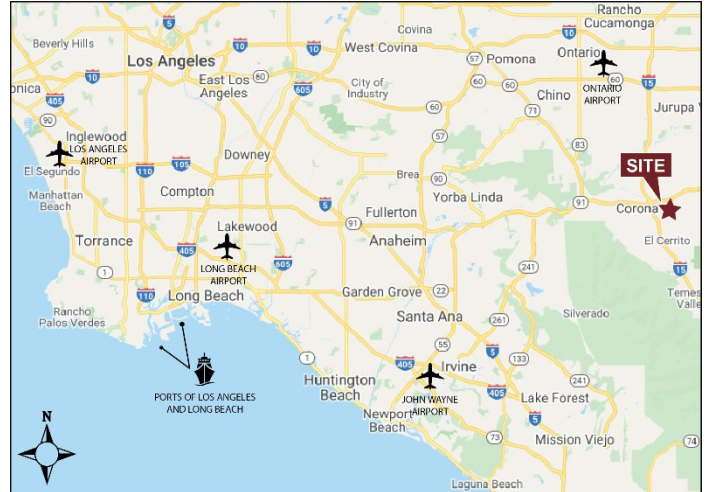
OAKMONT / CORONA

210 Radio Road | Corona CA

Overall Floor Plan



Regional Map



Oakmont Industrial Group has taken a forward-looking approach to the design of its speculative office improvements in an effort to enhance occupier health and safety through the implementation of the “Healthy Office Improvements” outlined below. These state-of-the-art features create an enhanced touchless environment which helps promote a healthier workplace for the end user.

Touchless Office

- Motion sensor faucets in restrooms
- Motion sensor soap dispensers in restrooms
- Motion sensor paper towel dispensers in restrooms
- Motion sensor toilets and urinals
- Motion sensor faucets in the breakroom
- Install Foot pulls at high-traffic doors
- Add Water bottle filling stations at water fountains
- Motion sensor light switches in every room

Other Items

- Permanent hand sanitizing stations at all high-traffic doors
- Plastic laminate counters and toilet partitions
- VCT flooring in high-traffic breakrooms
- Sheet vinyl flooring in office restrooms
- Sheet vinyl flooring in warehouse restrooms
- Weekly cleanings of the office area during the lease-up period
- Masks provided at office entrance during the lease-up period

FOR MORE INFORMATION, CONTACT:

Timothy N. Hawke, SIOR

Owner/President

P: 951.280.1733 | M: 951.533.2513

thawke@stratarealty.com

CADRE #00880273

Rick John, SIOR

Executive Vice President

P: 909.912.0001 | M: 949.378.4661

rj@daumcommercial.com

CADRE #00800783



OAKMONT / CORONA

210 Radio Road | Corona CA

Site Plan



FOR MORE INFORMATION, CONTACT:

Timothy N. Hawke, SIOR

Owner/President

P: 951.280.1733 | M: 951.533.2513

thawke@stratarealty.com

CADRE #00880273

Rick John, SIOR

Executive Vice President

P: 909.912.0001 | M: 949.378.4661

rj@daumcommercial.com

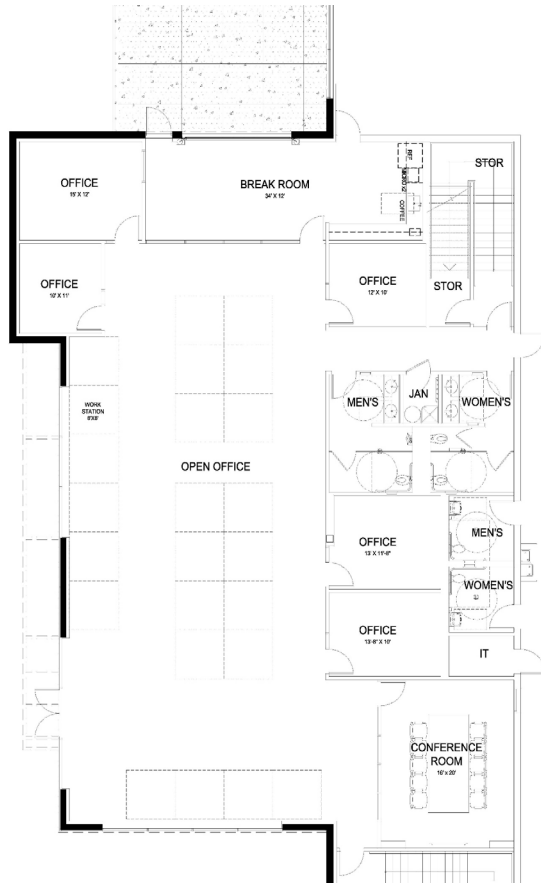
CADRE #00800783



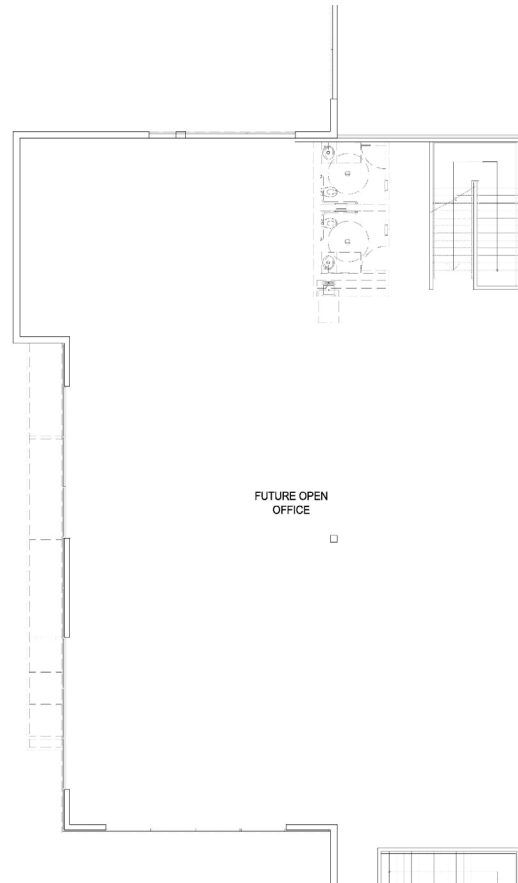
OAKMONT / CORONA

210 Radio Road | Corona CA

Office Floor Plans



Ground Floor Office



2nd Floor Mezzanine

FOR MORE INFORMATION, CONTACT:

Timothy N. Hawke, SIOR

Owner/President

P: 951.280.1733 | M: 951.533.2513

thawke@stratarealty.com

CADRE #00880273

Rick John, SIOR

Executive Vice President

P: 909.912.0001 | M: 949.378.4661

rj@daumcommercial.com

CADRE #00800783

