

±19,936 SF INDUSTRIAL FACILITY  
**FOR LEASE** 5882 MACHINE DRIVE  
HUNTINGTON BEACH, CA

CONTACT EXCLUSIVE LISTING AGENTS:

**MIKE BARREIRO**  
EXECUTIVE VICE PRESIDENT | PRINCIPAL  
P: 949.355.8500  
E: mbarreiro@daumcre.com  
CA DRE License #01712620

**DEVIN RAY**  
ASSOCIATE  
M: 714.322.1252  
dray@daumcre.com  
CA DRE License #02018130



**4**  
GROUND LEVEL



**20'**  
CLEARANCE



**LARGE**  
FENCED YARD



**AMPERAGE**  
1,600 AMPS 277/480  
VERIFY VOLTAGE



D/AQ Corp. #01129558, Maps Courtesy ©Google & ©Microsoft. Although all information is furnished regarding for sale, rental or financing as to the accuracy thereof, and it is submitted subject to errors, omissions, changes of price, rental or other conditions, prior sale, lease or financing, or withdrawal without notice.

19,936 SF  
INDUSTRIAL  
FACILITY

FOR LEASE

5882 MACHINE DRIVE  
HUNTINGTON BEACH, CA

ABOUT  
THE  
PROPERTY

## PROPERTY HIGHLIGHTS

- 19,936 SF Freestanding High Image Flex/MFG HQ Facility
- ± 8,670 SF High Image Office
- Open Office Floor Plan
- Three (3) GL Doors (12x12')
- One (1) GL Door (12x14')
- New Improvements
- Fenced Yard
- Ample Parking
- Corner Building
- Upgraded Fire Sprinklers
- Heavy Power & Distribution 1,600 Amps 277/480 Verify Voltage
- 20' Warehouse Clear
- Research & Technology Zoning
- Floor Drains
- CCTV-Security Cameras

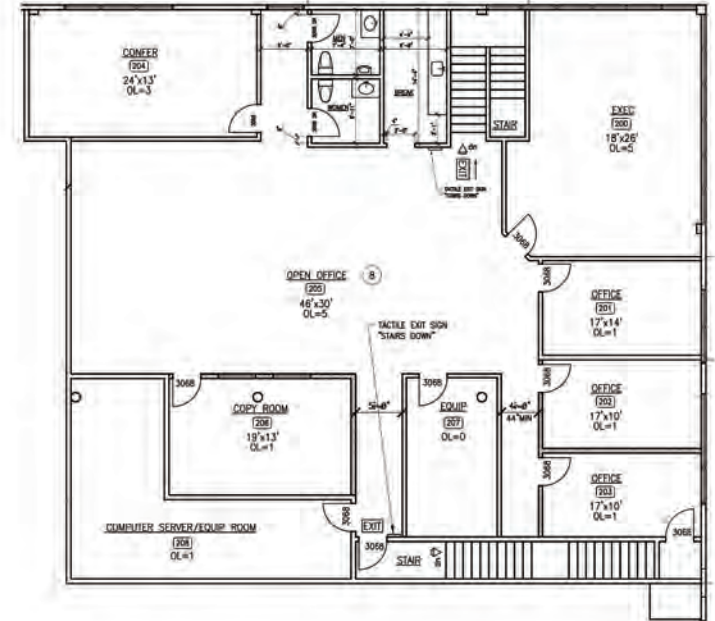


19,936 SF  
INDUSTRIAL  
FACILITY

## PROPERTY FLOOR PLAN



## SECOND STORY OFFICE FLOOR PLAN



FOR LEASE

5882 MACHINE DRIVE  
HUNTINGTON BEACH, CA

CONTACT EXCLUSIVE LISTING AGENTS:

**MIKE BARREIRO**

EXECUTIVE VICE PRESIDENT | PRINCIPAL

P: 949.355.8500

E: mbarreiro@daumcre.com

CA DRE License #01712620

**DEVIN RAY**

ASSOCIATE

M: 714.322.1252

dray@daumcre.com

CA DRE License #02018130

**DAUM**  
COMMERCIAL REAL ESTATE SERVICES

19,936 SF  
INDUSTRIAL  
FACILITY

5882 MACHINE DRIVE  
HUNTINGTON BEACH, CA

FOR LEASE

OFFICE



CONTACT EXCLUSIVE LISTING AGENTS:

**MIKE BARREIRO**

EXECUTIVE VICE PRESIDENT | PRINCIPAL

P: 949.355.8500

E: mbarreiro@daumcre.com

CA DRE License #01712620

**DEVIN RAY**

ASSOCIATE

M: 714.322.1252

dray@daumcre.com

CA DRE License #02018130

**DAUM**  
COMMERCIAL REAL ESTATE SERVICES

D/AQ Corp. #01129558. Maps Courtesy @Google & @Microsoft. Although all information is furnished regarding for sale, rental or financing is from sources deemed reliable, such information has not been verified and no express representation is made nor is any to be implied as to the accuracy thereof, and it is submitted subject to errors, omissions, changes of price, rental or other conditions, prior sale, lease or financing, or withdrawal without notice.

19,936 SF  
INDUSTRIAL  
FACILITY

5882 MACHINE DRIVE  
HUNTINGTON BEACH, CA

FOR LEASE

## YARD



## WAREHOUSE



### CONTACT EXCLUSIVE LISTING AGENTS:

**MIKE BARREIRO**

EXECUTIVE VICE PRESIDENT | PRINCIPAL

P: 949.355.8500

E: mbarreiro@daumcre.com

CA DRE License #01712620

**DEVIN RAY**

ASSOCIATE

M: 714.322.1252

dray@daumcre.com

CA DRE License #02018130

**DAUM**  
COMMERCIAL REAL ESTATE SERVICES

19,936 SF  
INDUSTRIAL  
FACILITY

5882 MACHINE DRIVE  
HUNTINGTON BEACH, CA

FOR LEASE



CONTACT EXCLUSIVE LISTING AGENTS:

**MIKE BARREIRO**

EXECUTIVE VICE PRESIDENT | PRINCIPAL

P: 949.355.8500

E: mbarreiro@daumcre.com

CA DRE License #01712620

**DEVIN RAY**

ASSOCIATE

M: 714.322.1252

dray@daumcre.com

CA DRE License #02018130



19,936 SF  
INDUSTRIAL  
FACILITY

5882 MACHINE DRIVE  
HUNTINGTON BEACH, CA

FOR LEASE



CONTACT EXCLUSIVE LISTING AGENTS:

**MIKE BARREIRO**

EXECUTIVE VICE PRESIDENT | PRINCIPAL

P: 949.355.8500

E: [mbarreiro@daumcre.com](mailto:mbarreiro@daumcre.com)

CA DRE License #01712620

**DEVIN RAY**

ASSOCIATE

M: 714.322.1252

[dray@daumcre.com](mailto:dray@daumcre.com)

CA DRE License #02018130

 **DAUM**  
COMMERCIAL REAL ESTATE SERVICES

D/AQ Corp. #01129558. Maps Courtesy @Google & @Microsoft. Although all information is furnished regarding for sale, rental or financing is from sources deemed reliable, such information has not been verified and no express representation is made nor is any to be implied as to the accuracy thereof, and it is submitted subject to errors, omissions, changes of price, rental or other conditions, prior sale, lease or financing, or withdrawal without notice.