

FOR LEASE

MS 215

BUSINESS PARK

DAUM
COMMERCIAL REAL ESTATE SERVICES

R L G
Another
Glover Family, LLC
Real Estate Investment

BUILDING 4: ±16,274 SF

7239 OLD 215 FRONTAGE RD. | RIVERSIDE | CA

CROSS STREET: ALESSANDRO BOULEVARD



FOR MORE INFORMATION, CONTACT:

NOAH SAMARIN | EVP, PRINCIPAL

D: 909.912.0007 | M: 714.812.1289

noah.samarin@daumcommercial.com

CA Lic #01755814

CHRISTINA GURDZHIAN | ASSOCIATE VICE PRESIDENT

D: 909.912.0010 | M: 562.325.4079

christina.gurdzhyan@daumcommercial.com

CA Lic. #02071335

Although all information is furnished regarding for sale, rental or financing is from sources deemed reliable, such information has not been verified and no express representation is made nor is any to be implied as to the accuracy thereof, and it is submitted subject to errors, omissions, changes of price, rental or other conditions, prior sale, lease or financing, or withdrawal without notice. All maps courtesy of Google Maps, Bing, and Google Earth. Images courtesy of Pixabay DJ/AQ Corp. # 01129558

FOR LEASE

MS 215 BUSINESS PARK



PROPERTY FEATURES

BUILDING#	4
Address: Old 215 Frontage Rd	7239
Office (SF)	985
Total Building SF	16,274
Acres	0.90
Auto Parking	20
Zoning	BMP
Clear Height (Verify)	22'
Power (AMPS) - 277/480 Volt (Verify)	400
GL Doors (12x14)	1
Dock-Height Doors (9x10)	2
ESFR Sprinkler	YES

FOR MORE INFORMATION, CONTACT:

NOAH SAMARIN | EVP, PRINCIPAL

D: 909.912.0007 | M: 714.812.1289

noah.samarin@daumcommercial.com

CA Lic #01755814

CHRISTINA GURDZHIAN | ASSOCIATE VICE PRESIDENT

D: 909.912.0010 | M: 562.325.4079

christina.gurdzhyan@daumcommercial.com

CA Lic. #02071335

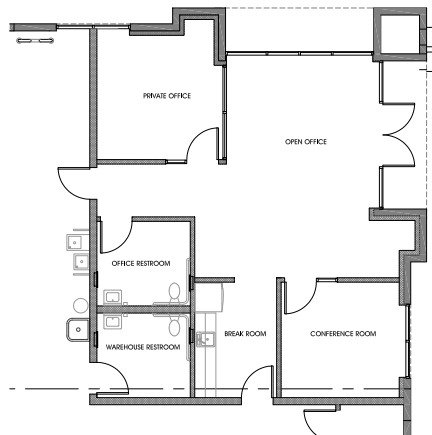
FOR LEASE

MS 215

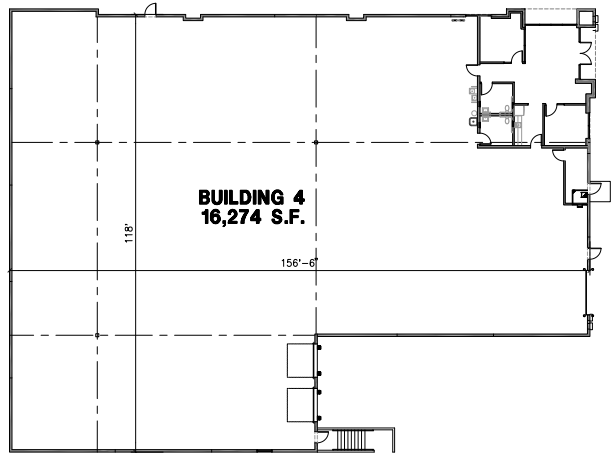
BUSINESS PARK



7239 OLD 215 FRONTAGE ROAD, RIVERSIDE, CA 92508 (BUILDING 4)

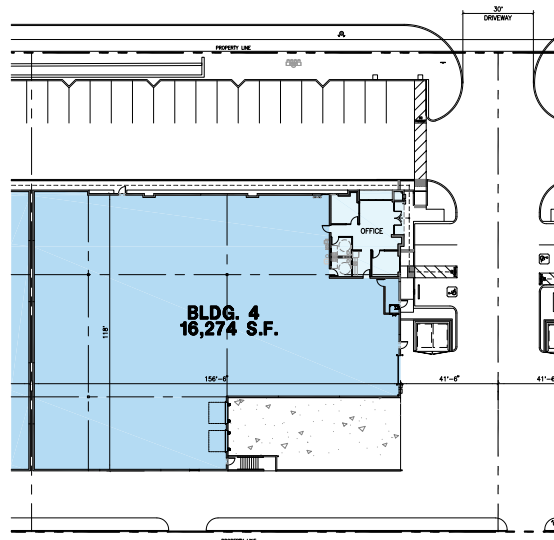


OFFICE FLOOR PLAN



FLOOR PLAN

OLD 215 FRONTAGE ROAD



SITE PLAN

FOR MORE INFORMATION, CONTACT:

NOAH SAMARIN | EVP, PRINCIPAL

D: 909.912.0007 | M: 714.812.1289

noah.samarin@daumcommercial.com

CA Lic #01755814

CHRISTINA GURDZHIAN | ASSOCIATE VICE PRESIDENT

D: 909.912.0010 | M: 562.325.4079

christina.gurdzhyan@daumcommercial.com

CA Lic. #02071335

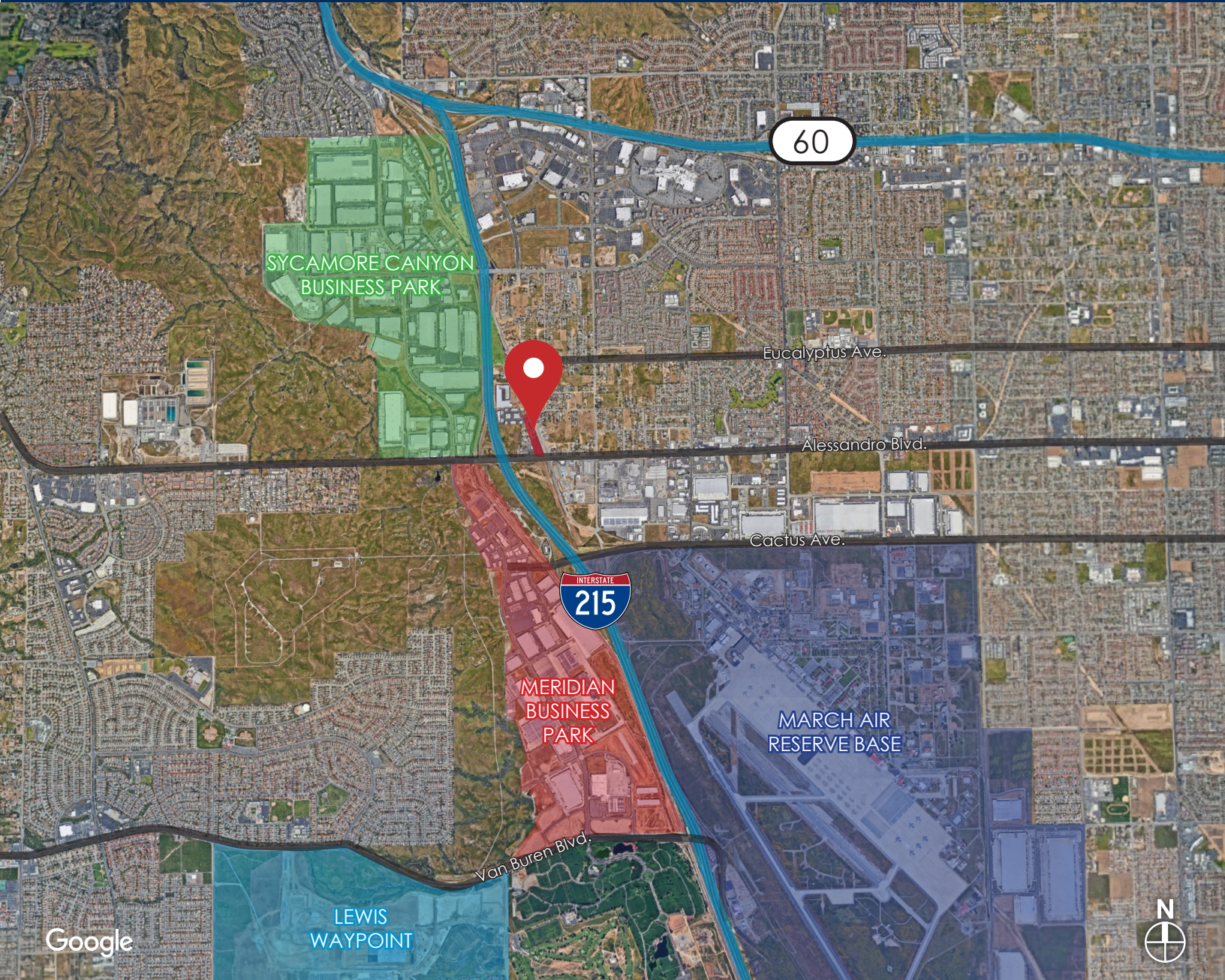
FOR LEASE

MS 215

BUSINESS PARK

DAUM
COMMERCIAL REAL ESTATE SERVICES

R L G
Another
Glover Family, LLC
Real Estate Investment



FOR MORE INFORMATION, CONTACT:

NOAH SAMARIN | EVP, PRINCIPAL
D: 909.912.0007 | M: 714.812.1289
noah.samarin@daumcommercial.com
CA Lic #01755814

CHRISTINA GURDZHIAN | ASSOCIATE VICE PRESIDENT
D: 909.912.0010 | M: 562.325.4079
christina.gurdzhyan@daumcommercial.com
CA Lic. #02071335

Although all information is furnished regarding for sale, rental or financing is from sources deemed reliable, such information has not been verified and no express representation is made nor is any to be implied as to the accuracy thereof, and it is submitted subject to errors, omissions, changes of price, rental or other conditions, prior sale, lease or financing, or withdrawal without notice. All maps courtesy of Google Maps, Bing, and Google Earth. Images courtesy of Pixabay DIAQ Corp. # 01129558